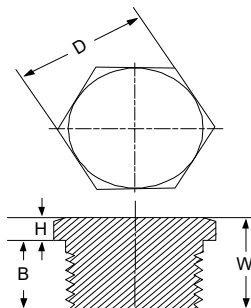


Zátka s vnějším závitem NPT šestihranná  
 provedení dle ANSI B 16.11, materiál dle ASTM-A 182, NPT závit ANSI B1.20.1  
 materiál: AISI 304/L nebo AISI 316/L

A025



NPT Threaded - Hexagon head plug



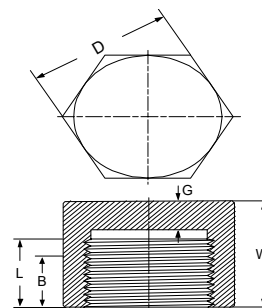
| objednávací kód<br>materiál AISI 304L | objednávací kód<br>materiál AISI 316L | DN     | W  | H  | D    | B  | Kg   |
|---------------------------------------|---------------------------------------|--------|----|----|------|----|------|
| A025-006-304L                         | A025-006-316L                         | 1/8"   | 16 | 6  | 11,0 | 10 | 0,01 |
| A025-008-304L                         | A025-008-316L                         | 1/4"   | 17 | 6  | 16,0 | 11 | 0,03 |
| A025-010-304L                         | A025-010-316L                         | 3/8"   | 21 | 8  | 18,0 | 13 | 0,05 |
| A025-015-304L                         | A025-015-316L                         | 1/2"   | 22 | 8  | 22,0 | 14 | 0,08 |
| A025-020-304L                         | A025-020-316L                         | 3/4"   | 26 | 10 | 27,0 | 16 | 0,15 |
| A025-025-304L                         | A025-025-316L                         | 1"     | 29 | 10 | 36,0 | 19 | 0,25 |
| A025-032-304L                         | A025-032-316L                         | 1 1/4" | 35 | 14 | 46,0 | 21 | 0,50 |
| A025-040-304L                         | A025-040-316L                         | 1 1/2" | 37 | 16 | 50,0 | 21 | 0,65 |
| A025-050-304L                         | A025-050-316L                         | 2"     | 40 | 18 | 65,0 | 22 | 1,10 |

Zátka s vnitřním závitem NPT šestihranná  
 provedení dle ANSI B 16.11, materiál dle ASTM-A 182, NPT závit ANSI B1.20.1  
 materiál: AISI 304/L nebo AISI 316/L

A024



NPT Threaded - Hexagon cap



| objednávací kód<br>materiál AISI 304L | objednávací kód<br>materiál AISI 316L | DN     | W  | D    | G    | B    | L <sub>min</sub> | Kg   |
|---------------------------------------|---------------------------------------|--------|----|------|------|------|------------------|------|
| A024-008-304L                         | A024-008-316L                         | 1/4"   | 25 | 16,0 | 5,0  | 8,0  | 10,0             | 0,05 |
| A024-010-304L                         | A024-010-316L                         | 3/8"   | 25 | 17,5 | 5,0  | 9,0  | 10,5             | 0,08 |
| A024-015-304L                         | A024-015-316L                         | 1/2"   | 32 | 22,0 | 6,5  | 11,0 | 13,5             | 0,12 |
| A024-020-304L                         | A024-020-316L                         | 3/4"   | 37 | 27,0 | 6,5  | 12,5 | 14,0             | 0,20 |
| A024-025-304L                         | A024-025-316L                         | 1"     | 41 | 35,0 | 9,5  | 14,5 | 17,5             | 0,31 |
| A024-032-304L                         | A024-032-316L                         | 1 1/4" | 44 | 44,5 | 9,5  | 17,0 | 18,0             | 0,60 |
| A024-040-304L                         | A024-040-316L                         | 1 1/2" | 44 | 51,0 | 11,0 | 18,0 | 18,5             | 0,73 |
| A024-050-304L                         | A024-050-316L                         | 2"     | 48 | 63,5 | 12,5 | 19,0 | 19,0             | 1,05 |