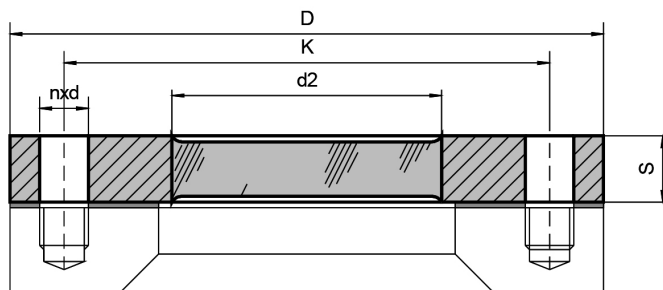
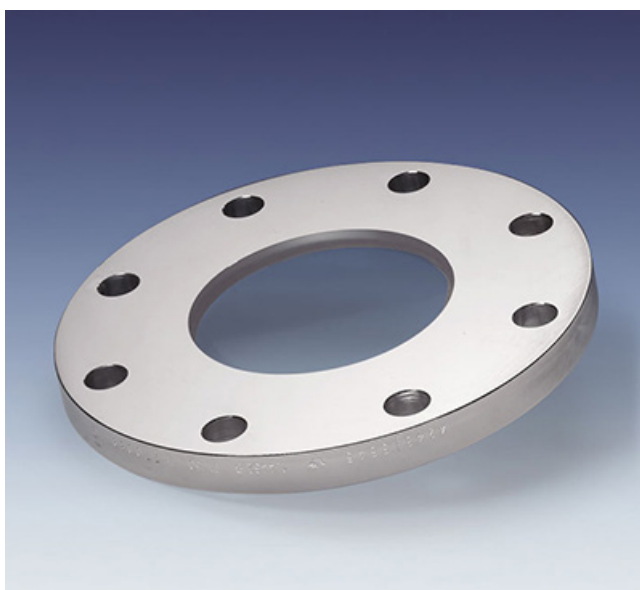


Bol-on Sight Glass type 13.B3 to ANSI B16.5 (glass - concave both faces)



Applications:

- Flat face ANSI mating flange

Advantages:

- Reliability against total failure. The possibility of unexpected rupture is excluded
- Long working time
- Smooth easy clean surface
- Maximum viewing
- Minimum design height

Operating conditions:

- Pressure: PN20 to PN50, higher pressures possible
- Temperature: see table

Ring materials	Operating temperature
1.0570	-10 °C to +300 °C
1.4462	-30 °C to +280 °C
2.4602	-60 °C to +300 °C
2.4605	-60 °C to +300 °C
2.4610	-60 °C to +300 °C

Technical data:

Manufactured and tested to:

- Directive for pressure equipment 2014/68/EU, Module H (DIN/EN/ISO 9001)
- AD2000 Standards W0/TRD 100
- Sight glass fused to metal conforming to DIN 7079
- Materials to VdTÜV specifications and the DIN/EN designated standards

Material certificates:

- Certificate of Conformity to EN 10204-3.1 or 3.2 for extra costs

Material:

- Glass: Borosilicate to DIN 7080 / DIN 7079

Important:

- Requires parallel flat face mounting flange and full gasket

PN20 – 150 lb/sq.in.								
NW	Flange			Glass d2	Mounting holes		Gasket	
	D	K	S		n	d		
1½"	127,0	98,6	23	40	4	15,7	127,0 x 70 x 2	
2"	152,4	120,7	23	50	4	19,1	152,4 x 89 x 2	
2½"	177,8	139,7	23	60	4	19,1	177,8 x 100 x 2	
3"	190,5	152,4	23	75	4	19,1	190,5 x 114 x 2	
4"	228,6	190,5	23	100	8	19,1	228,6 x 152 x 2	
6"	279,4	241,3	28	135	8	22,4	279,4 x 203 x 2	
8"	342,9	298,5	30	160	8	22,4	342,9 x 254 x 2	

PN50 – 300 lb/sq.in.								
NW	Flange			Glass d2	Mounting holes		Gasket	
	D	K	S		n	d		
1½"	155,4	114,3	30	40	4	22,3	155,4 x 73 x 2	
2"	165,1	127,0	32	50	8	19,0	165,1 x 89 x 2	
2½"	190,5	149,3	32	60	8	22,3	190,5 x 108 x 2	
3"	209,5	168,1	35	70	8	22,3	209,5 x 127 x 2	
4"	254,0	200,1	38	100	8	22,3	254,0 x 146 x 2	
6"	317,5	269,7	40	125	12	22,3	317,5 x 222 x 2	