

3 PIECES UNIONS FORGED STAINLESS STEEL FITTINGS PN60



Size : DN 1/4" to DN 2"
Ends : Male, female or welding
Min Temperature : - 25°C
Max Temperature : + 180°C
Max Pressure : 60 Bars
Specifications : Forged unions fittings
BSP threaded

Materials : Forged stainless steel

3 PIECES UNIONS FORGED STAINLESS STEEL FITTINGS PN60

SPECIFICATIONS:

Forged unions fittings
 Conical bearing
 Male BSP conical threaded
 Female BSP cylindrical threaded

USE:

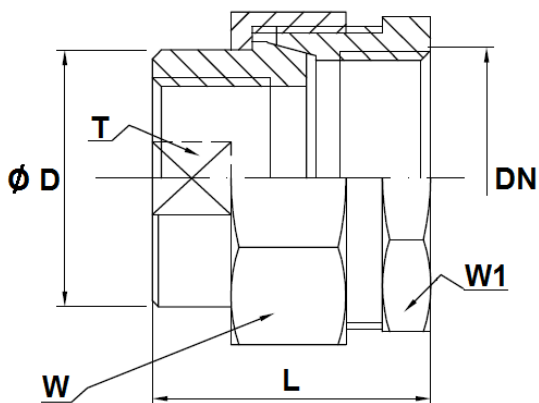
For all common fluids
 Min Temperature Ts : - 25°C
 Max Temperature Ts :+ 180°C
 Max Pressure Ps : 60 bars

RANGE :

From DN 1/4" to DN 2"
 ASTM A312 316L fittings with ASTM A351 CF8M nut

SIZE (in mm) :

Union Female - Female (DN 1/4"– 2") Ref. 2065

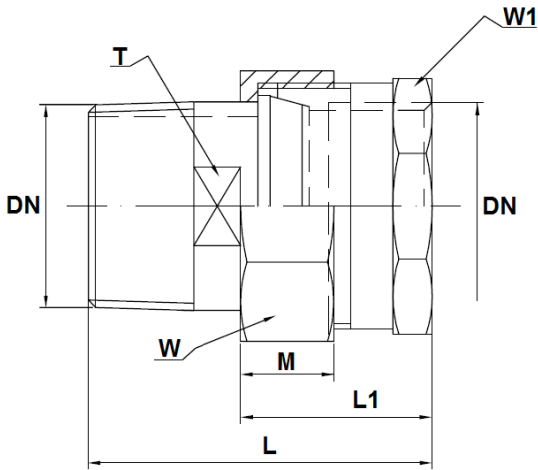


DN	1/4"	3/8"	1/2"	3/4"	1"	1"1/4	1"1/2	2"
Ø D	17.2	21.3	26.9	33.7	42.4	48.3	60.3	66
L	29	34	34	38	44	50	53	54
T	15	19	24	30	38	45	54	63
W	24	30	36	46	55	60	70	84
W1	22	28	35	43	52	57	68	78
Weig. (Kg)	0.061	0.108	0.163	0.268	0.412	0.439	0.738	0.908

3 PIECES UNIONS FORGED STAINLESS STEEL FITTINGS PN60

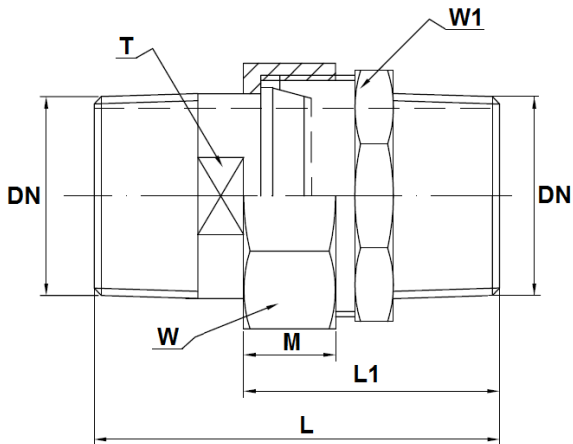
SIZE (in mm) :

Union Male - Female (DN 1/4"– 2") Ref. 2066

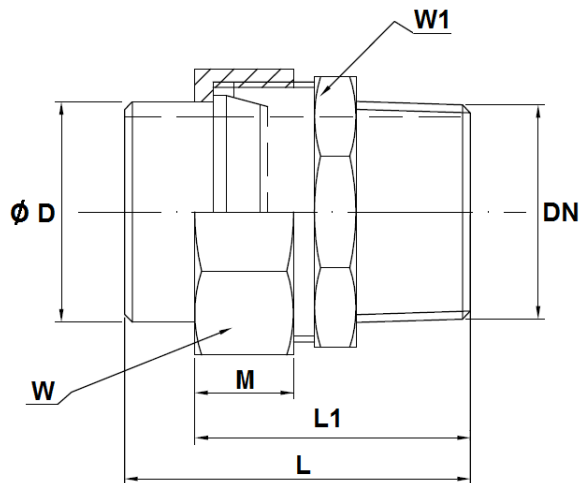


DN	1/4"	3/8"	1/2"	3/4"	1"	1"1/4"	1"1/2"	2"
L	41	45	54	57	66	70	73	83
L1	23	25	31	33	37	40	42	47.5
M	11	14.5	17	18	19	19	19	21
T	11	14	18	24	30	38	45	54
W	21	24	30	36	46	55	60	70
W1	18	22	28	35	43	52	57	68
Weig. (Kg)	0.045	0.068	0.120	0.171	0.295	0.407	0.474	0.674

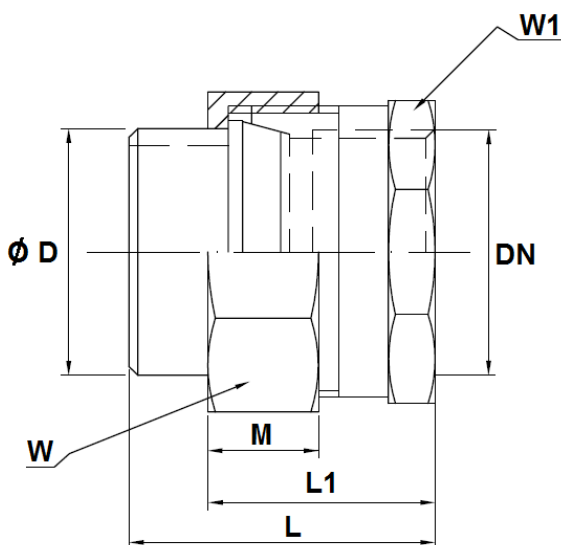
Union Male – Male (DN 1/4"– 2") Ref. 2064



DN	1/4"	3/8"	1/2"	3/4"	1"	1"1/4"	1"1/2"	2"
L	50	57	66	71	80	82	85	95
L1	32	37	43	47	51	52	54	59.5
M	11	14.5	17	18	19	19	19	21
T	11	14	18	24	30	38	45	54
W	21	24	30	36	46	55	60	70
W1	18	22	28	35	43	52	57	68
Weig. (Kg)		0.087	0.140	0.203	0.329	0.421	0.521	0.799

3 PIECES UNIONS FORGED STAINLESS STEEL FITTINGS PN60
SIZE (in mm) :
Union Male – B.W. (DN 1/4" – 2") Ref. 2067


DN	1/4"	3/8"	1/2"	3/4"	1"	1"1/4"	1"1/2"	2"
Ø D	13.5	17.2	21.3	26.9	33.7	42.4	48.3	60.3
L	40	47	52	59	64	65	65	73
L1	32	37	43	47	51	52	54	59.5
M	11	14.5	17	18	19	19	19	21
W	21	24	30	36	46	55	60	70
W1	18	22	28	35	43	52	57	68
Weig. (Kg)		0.082	0.129	0.192	0.299	0.378	0.459	0.687

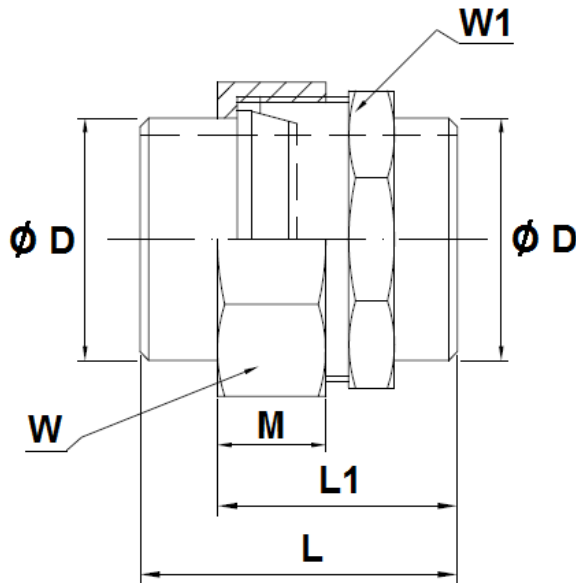
Union Female – B.W. (DN 1/4" – 2") Ref. 2068


DN	1/4"	3/8"	1/2"	3/4"	1"	1"1/4"	1"1/2"	2"
Ø D	13.5	17.2	21.3	26.9	33.7	42.4	48.3	60.3
L	31	35	40	45	50	53	53	61
L1	23	25	31	33	37	40	42	47.5
M	11	14.5	17	18	19	19	19	21
W	21	24	30	36	46	55	60	70
W1	18	22	28	35	43	52	57	68
Weig. (Kg)		0.062	0.108	0.163	0.267	0.361	0.417	0.567

3 PIECES UNIONS FORGED STAINLESS STEEL FITTINGS PN60

SIZE (in mm) :

Union B.W. – B.W. (DN 10– DN 50) Ref. 2069



DN	8	10	15	20	25	32	40	50
Ø D	13.5	17.2	21.3	26.9	33.7	42.4	48.3	60.3
L	40	45	48	52	55	56	58	62
L1	32	35	39	40	42	43	47	48.5
M	11	14.5	17	18	19	19	19	21
W	21	24	30	36	46	55	60	70
W1	18	22	28	35	43	52	57	68
Weig. (Kg)		0.082	0.130	0.182	0.290	0.367	0.457	0.661

STANDARDS :

Fabrication according to ISO 9001 : 2008

DIRECTIVE 97/23/CE : Products excluded from directive (Article 1,§3.2)

Threaded male BSP conical ends according to ISO 7/1 R

Threaded female BSP cylindrical ends according to ISO 228-1

ADVICE : Our opinion and our advice are not guaranteed and SFERACO shall not be liable for the consequences of damages. The customer must check the right choice of the products with the real service conditions.