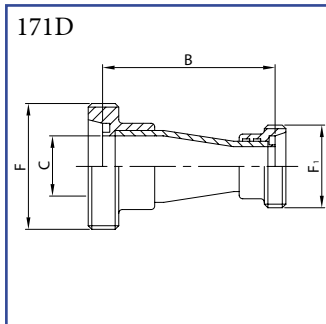
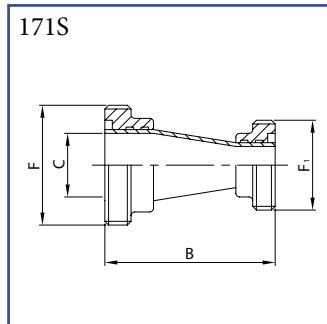


Redukce souosá DIN  
se závitovými konci  
AISI 304/L, AISI 316/L



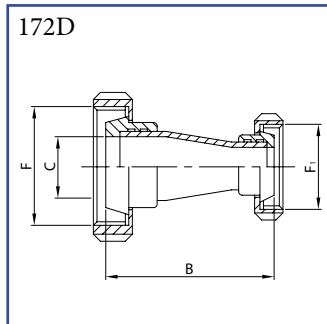
DN	B	C	F	FI	kg
32/25	94,0	31,0	58-6	52-6	0,39
40/25	115,0	37,0	65-6	52-6	0,46
40/32	101,0	37,0	65-6	58-6	0,50
50/25	128,0	49,0	78-6	52-6	0,57
50/32	142,0	49,0	78-6	58-6	0,66
50/40	125,0	49,0	78-6	65-6	0,67
65/40	130,0	66,0	95-6	65-6	0,81
65/50	148,0	66,0	95-6	78-6	0,93
80/65	136,0	81,0	110-4	95-6	1,41
100/80	138,0	100,0	130-4	110-4	2,15

Redukce souosá SMS  
se závitovými konci  
AISI 304/L, AISI 316/L



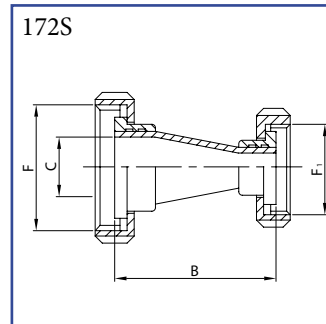
DN	B	C	F	FI	kg
38/25	97,0	35,1	60-6	40-6	0,38
51/25	115,0	47,8	70-6	40-6	0,47
51/38	97,0	47,8	70-6	60-6	0,58
63/38	115,0	60,5	85-6	60-6	0,82
63/51	97,0	60,5	85-6	70-6	0,81
76/38	132,0	72,9	98-6	60-6	1,00
76/51	115,0	72,9	98-6	70-6	0,99
76/63	97,0	72,9	98-6	85-6	1,13
101/63	120,0	97,6	132-6	85-6	2,12
101/76	120,0	97,6	132-6	98-6	2,22

Redukce souosá DIN  
kuželová hrdla s maticemi  
AISI 304/L, AISI 316/L



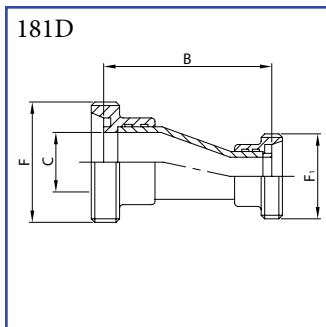
DN	B	C	F	FI	kg
32/25	94,0	31,0	58-6	52-6	0,64
40/25	115,0	37,0	65-6	52-6	0,74
40/32	101,0	37,0	65-6	58-6	0,80
50/25	128,0	49,0	78-6	52-6	0,92
50/32	142,0	49,0	78-6	58-6	1,03
50/40	125,0	49,0	78-6	65-6	1,08
65/40	130,0	66,0	95-6	65-6	1,43
65/50	148,0	66,0	95-6	78-6	1,55
80/65	136,0	81,0	110-4	95-6	2,42
100/80	138,0	100,0	130-4	110-4	3,47

Redukce souosá SMS  
kuželová hrdla s maticemi  
AISI 304/L, AISI 316/L



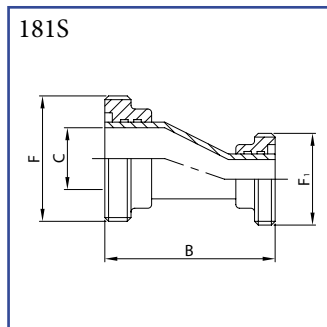
DN	B	C	F	FI	kg
38/25	97,0	35,1	60-6	40-6	0,66
51/25	115,0	47,8	70-6	40-6	0,76
51/38	97,0	47,8	70-6	60-6	0,98
63/38	115,0	60,5	85-6	60-6	1,33
63/51	97,0	60,5	85-6	70-6	1,34
76/38	132,0	72,9	98-6	60-6	1,64
76/51	115,0	72,9	98-6	70-6	1,65
76/63	97,0	72,9	98-6	85-6	1,90
101/63	120,0	97,6	132-6	85-6	3,02
101/76	120,0	97,6	132-6	98-6	3,03

Redukce excentrická DIN  
se závitovými konci  
AISI 304/L, AISI 316/L



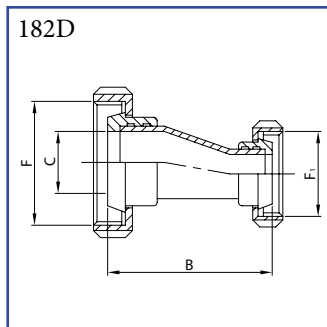
DN	B	C	F	FI	kg
32/25	116,0	31,0	58-6	52-6	0,42
40/25	123,0	37,0	65-6	52-6	0,46
40/32	115,0	37,0	65-6	58-6	0,51
50/25	143,0	49,0	78-6	52-6	0,57
50/32	133,0	49,0	78-6	58-6	0,65
50/40	122,0	49,0	78-6	65-6	0,67
65/40	166,0	66,0	95-6	65-6	0,88
65/50	143,0	66,0	95-6	78-6	0,90
80/65	136,0	81,0	110-4	95-6	1,41
100/80	136,0	100,0	130-4	110-4	2,18

Redukce excentrická SMS  
se závitovými konci  
AISI 304/L, AISI 316/L



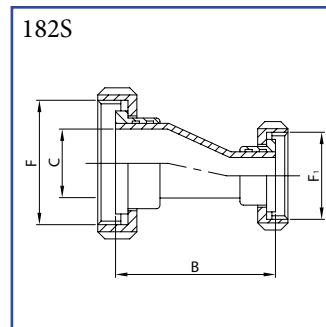
DN	B	C	F	FI	kg
38/25	104,0	35,1	60-6	40-6	0,40
51/25	126,0	47,8	70-6	40-6	0,47
51/38	105,0	47,8	70-6	60-6	0,59
63/38	130,0	60,5	85-6	60-6	0,79
63/51	103,0	60,5	85-6	70-6	0,84
76/38	148,0	72,9	98-6	60-6	1,02
76/51	126,0	72,9	98-6	70-6	1,00
76/63	105,0	72,9	98-6	85-6	1,14
101/63	143,0	97,6	132-6	85-6	2,20
101/76	128,0	97,6	132-6	98-6	2,27

Redukce excentrická DIN  
kuželová hrdla s maticemi  
AISI 304/L, AISI 316/L



DN	B	C	F	FI	kg
32/25	116,0	31,0	58-6	52-6	0,67
40/25	123,0	37,0	65-6	52-6	0,74
40/32	115,0	37,0	65-6	58-6	0,81
50/25	143,0	49,0	78-6	52-6	0,93
50/32	133,0	49,0	78-6	58-6	1,02
50/40	122,0	49,0	78-6	65-6	1,06
65/40	166,0	66,0	95-6	65-6	1,40
65/50	143,0	66,0	95-6	78-6	1,60
80/65	136,0	81,0	110-4	95-6	2,42
100/80	136,0	100,0	130-4	110-4	3,50

Redukce excentrická SMS  
se závitovými konci  
AISI 304/L, AISI 316/L



DN	B	C	F	FI	kg
38/25	104,0	35,1	60-6	40-6	0,67
51/25	126,0	47,8	70-6	40-6	0,76
51/38	105,0	47,8	70-6	60-6	0,99
63/38	130,0	60,5	85-6	60-6	1,30
63/51	103,0	60,5	85-6	70-6	1,37
76/38	148,0	72,9	98-6	60-6	1,66
76/51	126,0	72,9	98-6	70-6	1,67
76/63	105,0	72,9	98-6	85-6	1,91
101/63	143,0	97,6	132-6	85-6	3,10
101/76	128,0	97,6	132-6	98-6	3,30