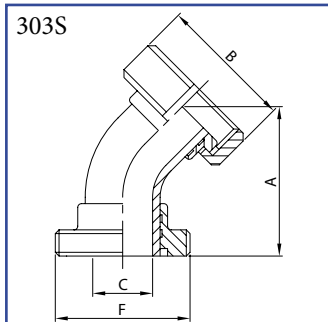
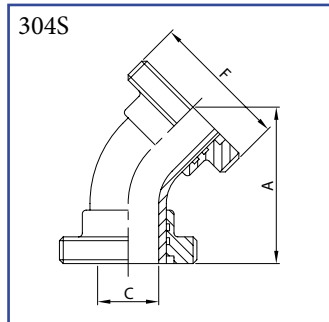


Koleno 45° SMS
závit / kužel. hrdlo s maticí
AISI 304/L, AISI 316/L



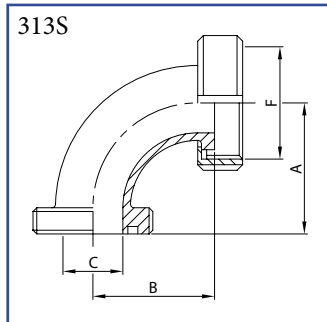
DN	A	B	C	F	kg
25	80,0	51,0	22,4	40-6	0,30
38	105,0	74,0	35,1	60-6	0,71
51	103,0	84,0	47,8	70-6	0,88
63	115,0	100,0	60,5	85-6	1,45
76	135,0	114,0	72,9	98-6	1,96
101	151,0	151,0	97,6	132-6	3,79

Koleno 45° SMS
se závitovými konci
AISI 304/L, AISI 316/L



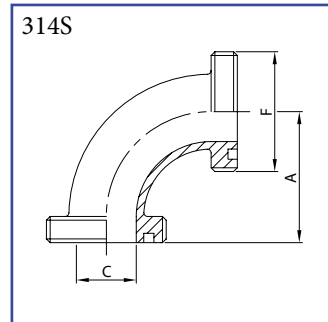
DN	A	C	F	kg
25	80,0	22,4	40-6	0,21
38	105,0	35,1	60-6	0,52
51	103,0	47,8	70-6	0,67
63	115,0	60,5	85-6	1,13
76	135,0	72,9	98-6	1,51
101	151,0	97,6	132-6	3,21

Koleno 90° SMS
závit / kužel. hrdlo s maticí
AISI 304/L, AISI 316/L



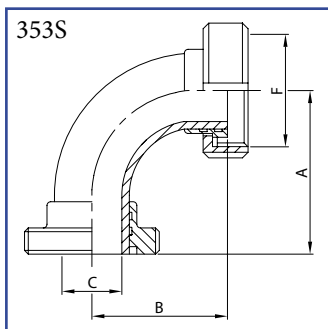
DN	A	B	C	F	kg
25	55,0	55,0	22,4	40-6	0,250
38	70,0	70,0	35,1	60-6	0,650
51	82,0	82,0	47,8	70-6	0,780
63	105,0	105,0	60,5	85-6	1,265
76	110,0	110,0	72,9	98-6	1,775
101	150,0	150,0	97,6	132-6	3,080

Koleno 90° SMS
se závitovými konci
AISI 304/L, AISI 316/L



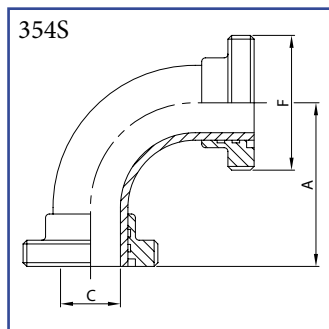
DN	A	C	F	kg
25	55,0	22,4	40-6	0,18
38	70,0	35,1	60-6	0,50
51	82,0	47,8	70-6	0,60
63	105,0	60,5	85-6	1,06
76	110,0	72,9	98-6	1,47
101	150,0	97,6	132-6	2,81

Koleno 90° dlouhé SMS
závit / kužel. hrdlo s maticí
AISI 304/L, AISI 316/L



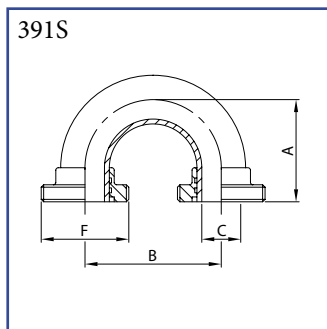
DN	A	B	C	F	kg
25	55,0	55,0	22,9	40-6	0,32
38	70,0	70,0	35,6	60-6	0,77
51	82,0	82,0	47,8	70-6	0,96
63	105,0	105,0	60,5	85-6	1,59
76	110,0	110,0	72,9	98-6	2,53
101	150,0	150,0	97,6	132-6	4,11

Koleno 90° dlouhé SMS
se závitovými konci
AISI 304/L, AISI 316/L



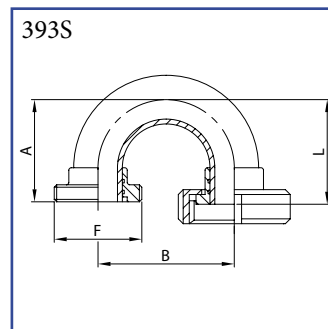
DN	A	C	F	kg
25	55,0	22,9	40-6	0,23
38	70,0	35,6	60-6	0,58
51	82,0	47,8	70-6	0,75
63	105,0	60,5	85-6	1,27
76	110,0	72,9	98-6	1,90
101	150,0	97,6	132-6	3,53

Koleno 180° SMS
se závitovými konci
AISI 304/L, AISI 316/L



DN	A	B	C	F	kg
25	75,0	81,0	22,4	40-6	0,31
38	90,0	104,0	35,1	60-6	0,65
51	100,0	143,0	47,8	70-6	0,93
63	115,0	168,0	60,5	85-6	1,48
76	130,0	171,0	72,9	98-6	2,18
101	150,0	220,0	97,6	132-6	4,68

Koleno 180° SMS
závit / kužel. hrdlo s maticí
AISI 304/L, AISI 316/L



DN	A	B	F	L	kg
25	75,0	81,0	40-6	75,0	0,39
38	90,0	104,0	60-6	90,0	0,84
51	100,0	143,0	70-6	100,0	1,14
63	115,0	168,0	85-6	115,0	1,80
76	130,0	171,0	98-6	130,0	2,63
101	150,0	220,0	132-6	150,0	5,26