

2 PIECES BALL VALVE PN63 BLUE HANDLE



Size : DN 1/4" to 4"
Ends : Threaded BSP
Min Temperature : - 20°C
Max Temperature : + 180°C
Max Pressure : 63 Bars (up to DN3/4")
Specifications : Anti blow-out stem
Locking device
Full bore

Materials : Stainless steel

2 PIECES BALL VALVE PN63 BLUE HANDLE

SPECIFICATIONS :

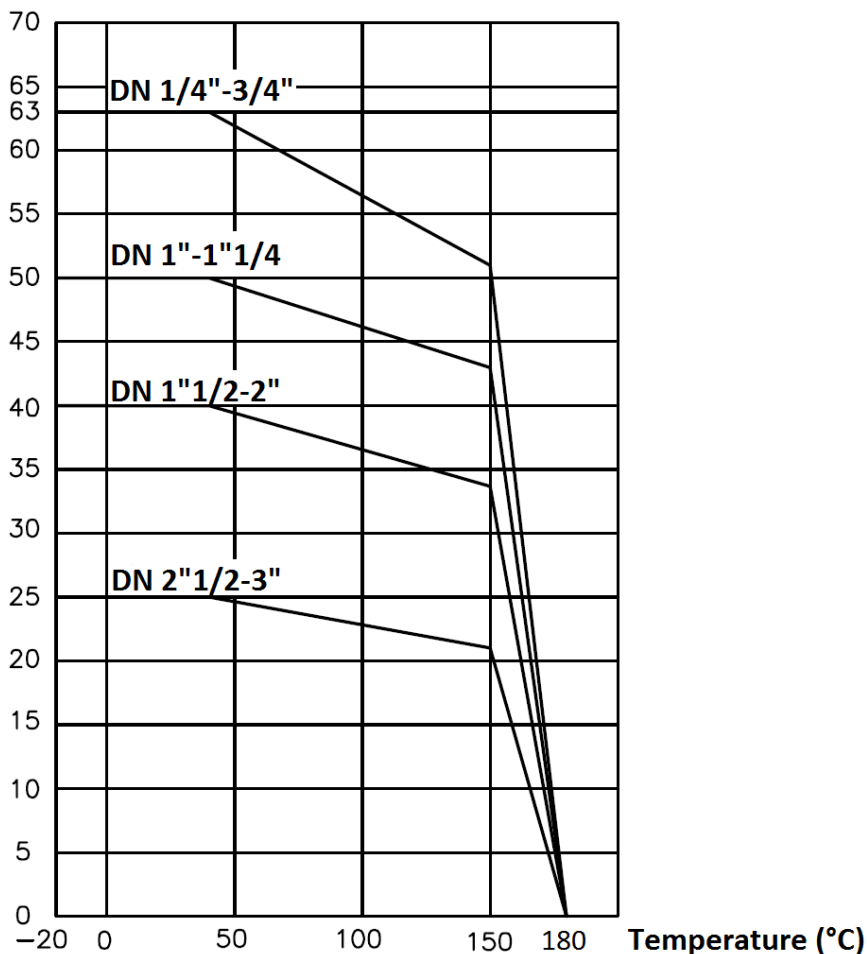
Full bore
Anti blow-out stem
PTFE packing
Locking device
Solid ball
2 pieces type

USE :

Chemical and pharmaceutical industries, petrochemical industries, hydraulic installation, compressed air
Min and max Temperature Ts : -20°C to + 180°C
Max Pressure Ps : 63 bars up to DN3/4", 50 bars from 1" to 1"1/4, 40 bars from 1"1/2 to 2" , 25 bars from 2"1/2 to 3" , 16 bars for DN4" (see graph)

PRESSURE / TEMPERATURE GRAPH (STEAM EXCLUDED) :

PRESSURE (Bar)



2 PIECES BALL VALVE PN63 BLUE HANDLE

RANGE :

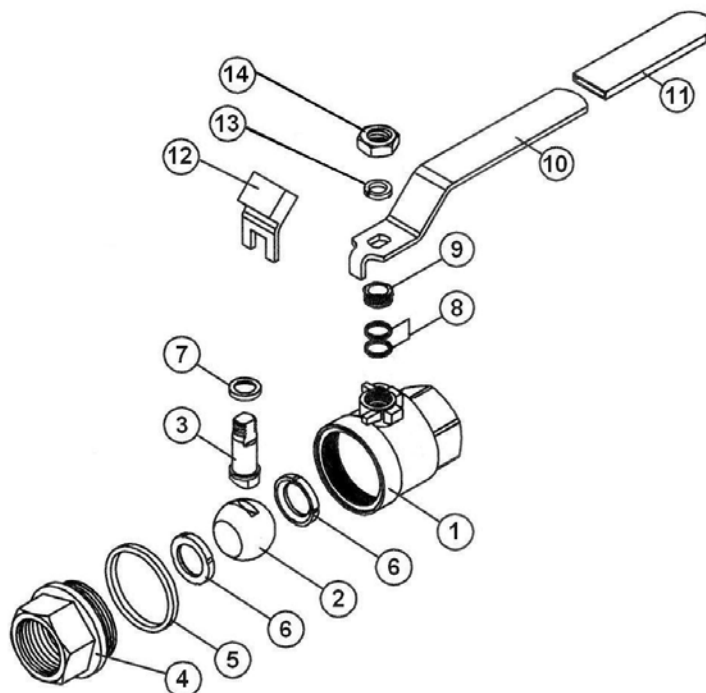


Female / female threaded BSP Stainless steel blue handle Ref. 715 from DN 1/4" to DN 4"

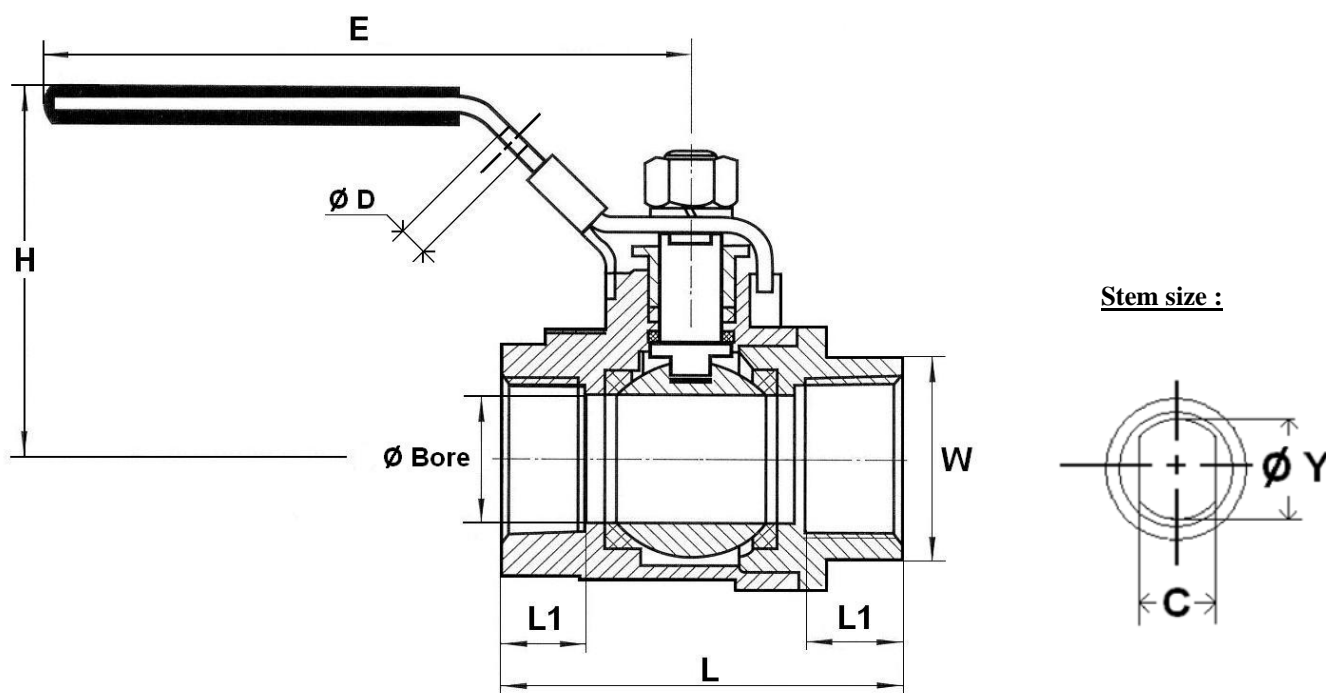


Gaine de poignée rouge Ref. 9830370 à 9830374 du DN 1/4" au DN 3"

MATERIALS :



| Item | Designation | Materials |
|------|----------------|---------------------------------|
| 1 | Body | ASTM A351 CF8M |
| 2 | Ball | ASTM A351 CF8M |
| 3 | Stem | SS 316 |
| 4 | Ends | ASTM A351 CF8M |
| 5 | Body seal | PTFE |
| 6 | Seat | PTFE filled with 3% glass fiber |
| 7 | Stem gasket | PTFE |
| 8 | Packing | PTFE |
| 9 | Packing nut | SS 304 |
| 10 | Handle | SS 304 |
| 11 | Handle cover | Plastic |
| 12 | Locking device | SS 304 |
| 13 | Handle washer | SS 304 |
| 14 | Handle nut | SS 304 |

2 PIECES BALL VALVE PN63 BLUE HANDLE
SIZE (in mm) :


| DN | 1/4" | 3/8" | 1/2" | 3/4" | 1" | 1"1/4 | 1"1/2 | 2" | 2"1/2 | 3" | 4" |
|----------------|------|------|------|------|------|-------|-------|------|-------|------|------|
| Ø Bore | 11.6 | 11.6 | 15 | 20 | 25 | 32 | 38 | 50 | 65 | 76 | 94 |
| L | 46.8 | 48.5 | 58 | 65.7 | 77 | 90 | 98 | 121 | 145 | 166 | 214 |
| Ø D | 7.6 | 7.6 | 7.6 | 7.6 | 7.6 | 7.6 | 7.6 | 7.6 | 7.6 | 7.6 | 7.6 |
| E | 100 | 100 | 100 | 127 | 127 | 154 | 154 | 192 | 244 | 244 | 330 |
| H | 53 | 53 | 57 | 66 | 70 | 85 | 89 | 103 | 142 | 151 | 176 |
| L1 | 10.5 | 10.5 | 13 | 13.2 | 15.2 | 18 | 18.3 | 22.5 | 25.5 | 28.4 | 36 |
| W on flat | 17 | 20.8 | 25.5 | 31 | 38.5 | 48 | 54 | 67 | 83.5 | 98 | 128 |
| C | 5 | 5 | 5 | 5.8 | 5.8 | 7 | 7 | 8 | 12 | 12 | 14 |
| Ø Y | 8 | 8 | 8 | 9.2 | 9.2 | 11 | 11 | 12.4 | 20 | 20 | 24 |
| Weight (in Kg) | 0.18 | 0.19 | 0.26 | 0.40 | 0.59 | 1 | 1.32 | 2.46 | 4.83 | 7.45 | 16.5 |

2 PIECES BALL VALVE PN63 BLUE HANDLE

TORQUE VALUES (in Nm without safety coefficient) :

| DN | 1/4" | 3/8" | 1/2" | 3/4" | 1" | 1"1/4" | 1"1/2" | 2" | 2"1/2" | 3" | 4" |
|-------------|------|------|------|------|----|--------|--------|----|--------|----|-----|
| Torque (Nm) | 2.7 | 2.7 | 3 | 4 | 5 | 6 | 8 | 10 | 40 | 60 | 100 |

STANDARDS :

Fabrication according to ISO 9001 : 2008

DIRECTIVE 97/23/CE : CE N° 0035
 Risk Category II Module D1

Pressure Tests according to EN 12266-1

Threaded BSP cylindrical ends according to ISO 228-1

ADVICE : Our opinion and our advice are not guaranteed and SFERACO shall not be liable for the consequences of damages. The customer must check the right choice of the products with the real service conditions.

INSTALLATION AND MAINTENANCE

BEFORE INSTALLATION :

Pipe-line must be cleaned and free from residual of weldings, rubbish, shaving and every kind of extraneous materials. Pipe-line must be perfectly aligned and their support properly dimensioned so that there's no external constraint.

Please use the right product according to the services conditions to seal the valve. Use the right bolt tightening so that the ends won't be damaged.

CLEANING AND TESTS

Keep closed the valves during the cleaning operation so that there's no impurities between the ball and the body.

Tests under pressure must be done with a cleaned pipe-line.

Open partially the valve for tests. Pressure test do not exceed the valve specifications according to EN 12266-1.

MAINTENANCE

It's recommended to operate the valve twice (open and close) 1 to 2 times per year.

When intervention on the valve, be sure there's no pressure in the pipe-line, there's no fluid in it, and that it is isolated. The temperature must be low enough to operate without risks. If there's a corrosive fluid, inert installation before intervention.

When the valve is under pressure :

If there's a leakage at the packing, tighten it slightly so that the leakage disappears.