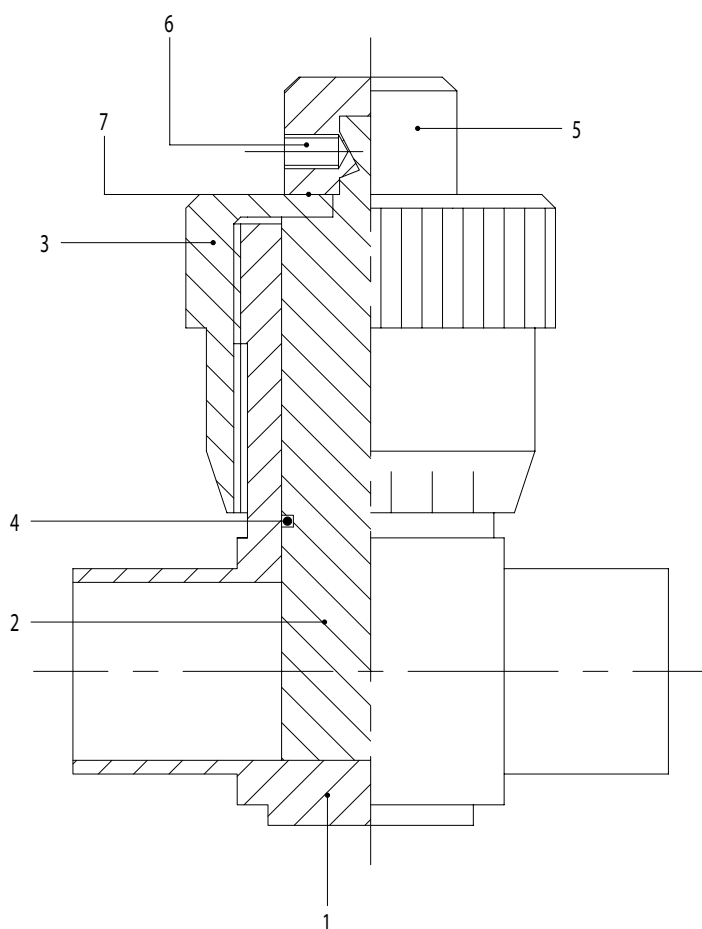




- High strength construction from solid stainless steel block.
- Flow control by screwing of the external adjusting device.
- Internal stem of chrome-plated stainless steel. EPDM gasket.
- Standard finish: 120 grain external polishing and internal glazing. Other finishes on request.
- Maximum operating pressure: 15 bars.



1. Valve casing
2. Head seal
3. Adjusting device
4. OR-seal ring
5. Locking device
6. Dowel
7. Washer

Pos.	Code	Norm	1" 25	D 25 28	D 32 34	1 1/2" 38	D 40 40	2" 51	D 50 52	2 1/2" 63	D 65 70	3" 76	Mat.
1	620	L	25	28	34	38	40	51	52	63	70	76	4L/6L
2	620	L	25/28	25/28	34	38/40	38/40	51/52	51/52	63	70	76	4L/6L
3	620		25/28	25/28	34	38/40	38/40	51/52	51/52	63	70	76	4L
4	OR		3081	3081	4093	4118	4118	6150	6150	6187	6212	6237	EPDM
5	620		25/76	25/76	25/76	25/76	25/76	25/76	25/76	25/76	25/76	25/76	4L
6	GRA		8 x 10	8 x 10	8 x 10	8 x 10	8 x 10	8 x 10	8 x 10	8 x 10	8 x 10	8 x 10	4L
7	620		25/76	25/76	25/76	25/76	25/76	25/76	25/76	25/76	25/76	25/76	PTFE

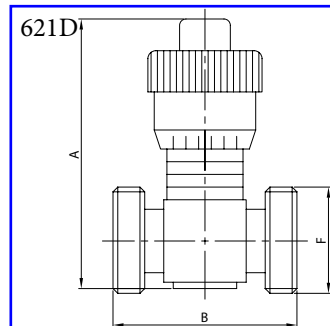
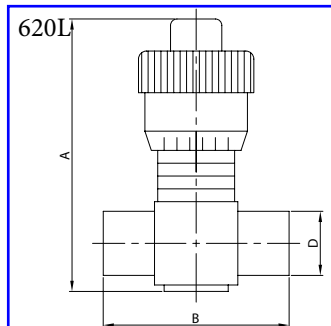
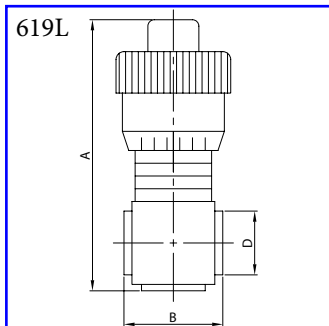


Flow control valve
Welding ends
AISI 304L, AISI 316L

Flow control valve
Plain ends
AISI 304L, AISI 316L

Flow control valve
Male ends
AISI 304L, AISI 316L

DIN



DN	A	B	D	Kg
28	127,0	43,0	28,0	1,22
34	140,0	50,0	34,0	2,20
40	165,0	60,0	40,0	2,82
52	200,0	70,0	52,0	3,76
70	253,0	87,0	70,0	7,42

DN	A	B	D	Kg
28	127,0	83,0	28,0	1,25
34	140,0	90,0	34,0	2,26
40	165,0	100,0	40,0	2,86
52	200,0	124,0	52,0	3,82
70	253,0	137,0	70,0	7,46

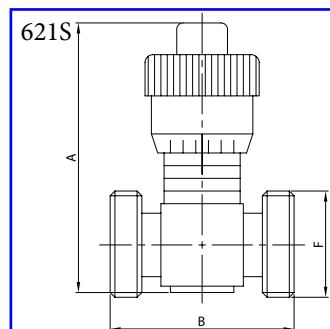
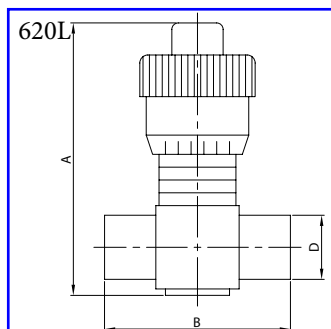
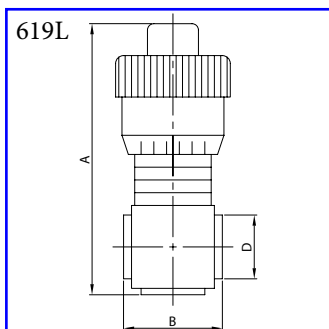
DN	A	B	F	Kg
25	127,0	101,0	52-6	1,44
32	140,0	114,0	58-6	2,56
40	165,0	126,0	65-6	3,15
50	200,0	140,0	78-6	4,20
65	253,0	167,0	95-6	8,30

Flow control valve
Welding ends
AISI 304L, AISI 316L

Flow control valve
Plain ends
AISI 304L, AISI 316L

Flow control valve
Male ends
AISI 304L, AISI 316L

SMS



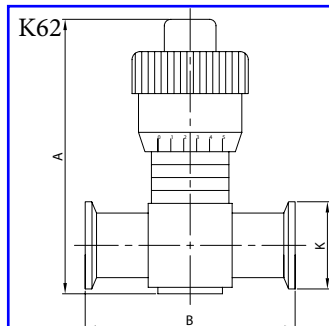
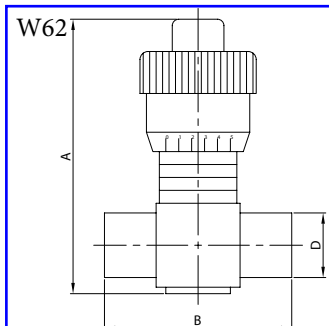
DN	A	B	D	Kg
25	126,0	43,0	25,4	1,22
38	165,0	60,0	38,1	2,82
51	200,0	70,0	50,8	3,76
63	230,0	83,0	63,5	5,58
76	274,0	95,0	76,2	7,40

DN	A	B	D	Kg
25	126,0	83,0	25,4	1,25
38	165,0	100,0	38,1	2,86
51	200,0	124,0	50,8	3,82
63	230,0	133,0	63,5	5,64
76	274,0	145,0	76,2	7,46

DN	A	B	F	Kg
25	126,0	83,0	40-6	1,35
38	165,0	106,0	60-6	3,20
51	200,0	120,0	70-6	4,36
63	230,0	143,0	85-6	6,56
76	274,0	165,0	98-6	8,68

Flow control valve
Plain ends
AISI 316L

Flow control valve
End ferrule CLAMP
AISI 316L



DN	A	B	D	Kg	
1"	25	127,0	83,0	25,4	1,22
1 1/2"	38	140,0	100,0	38,1	2,20
2"	51	165,0	124,0	50,8	2,82
2 1/2"	63	200,0	133,0	63,5	3,76
3"	76	253,0	145,0	76,2	7,42

DN	A	B	K	Kg	
1"	25	127,0	100,0	50,5	1,44
1 1/2"	38	140,0	117,0	50,5	2,56
2"	51	165,0	127,0	64,0	3,15
2 1/2"	63	200,0	140,0	77,0	4,20
3"	76	253,0	152,0	91,0	8,30