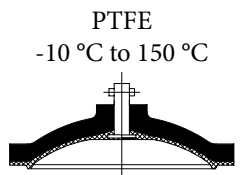


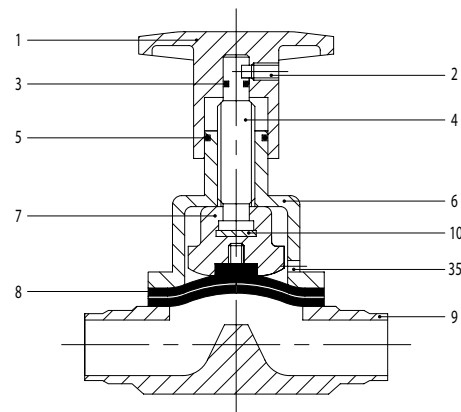


EPDM  
-40 °C to 150 °C



PTFE  
-10 °C to 150 °C

1. Handwheel
2. Dowel
3. OR seal ring
4. Spindle
5. OR seal ring
6. Control
7. Compressor
8. Diaphragm
9. Valve casing
10. Thrust bearing
35. Leakage detection hole



- Produced in strict conformity with criteria and tests required by 3-A standards.
- Press-forged, solution heat-treated, machined and polished AISI 316L stainless steel body.
- AISI 316L stainless steel manual and pneumatic controls for high temperature sterilization.
- EPDM or PTFE diaphragms. EPDM diaphragms and elastic supports for the PTFE diaphragms fabric-finished to give high mechanical strength.
- Perfect seal and complete insulation from external pollutants.
- Complete self-drainage of all internal parts during CIP process.
- Reduced top-entry maintenance with easy access and no need to remove the valve from the system.
- Standard production: Clamp or welded ends. Available on request with threaded ends to DIN and SMS standards or flanged ends.
- Maximum operating pressure: 7 bars.

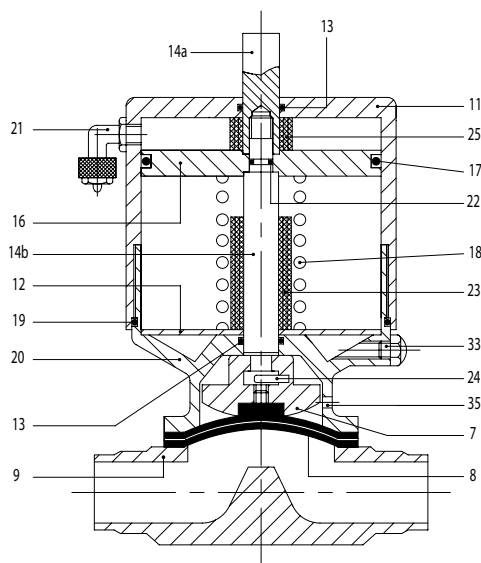
- Standard finish: 150 grain external polishing and internal glazing (LS finish)
- On request 240 grain external and internal polishing (LL finish)
- 400 grain electrolytic polishing (LE finish).

- CLAMP fittings - for details see section 18 / page 341

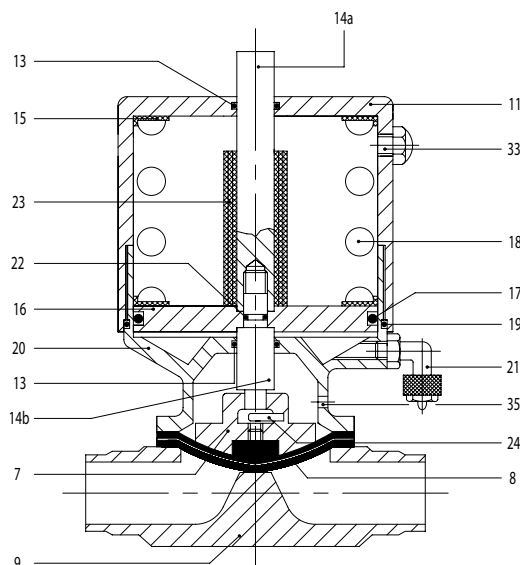
No.	Code	Norm	1/2"	3/4"	1"	1 1/2"	2"	Material
1	57		12/19	12	25	38	51	6L
2	GRA		M6	M6	M6	M8	M8	4L
3	OR		2018	2018	106	114	114	N
4	57		12/19	12/19	25	38	51	6L
5	OR		3056	3056	3068	3100	3100	N
6	57		12	19	25	38	51	6L
7	57	E	12	19	25	38	51	6L
7	57	T	12	19	25	38	51	6L
8	57		12	19	25	38	51	E/T
9	57	W	12,7	19,05	25,4	38,1	50,8	6L
9	57	W	21,3	26,9	33,7	48,3	60,3	6L
9	57	L	12	18/22	28	40	52	6L
9	57	D	10	15/20	25	40	50	6L
9	57	K	12	19	25	38	51	6L
10	57	E	12/19	12/19	25	38/51	38/51	OT
10	57	T	12/19	12/19	25	38/51	38/51	OT



Normally open diaphragm pneumatic valve

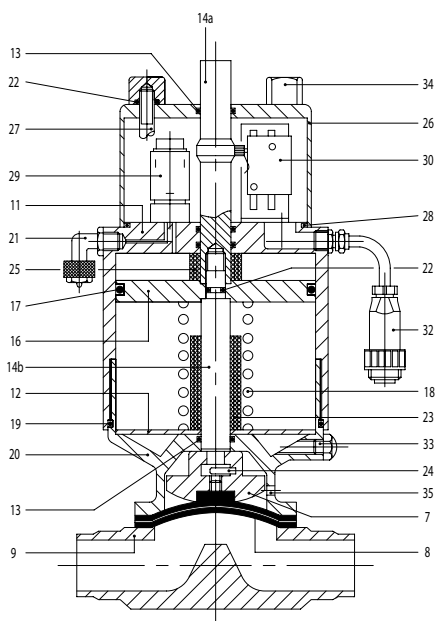


Normally closed diaphragm pneumatic valve

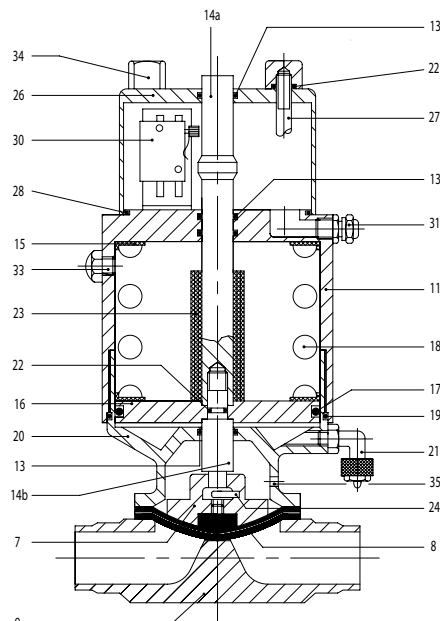


No.	Piece	No.	Piece
7	Compressor	22	OR seal ring
8	Diaphragm	23	Spacer
9	Valve body	24	Plug
11	Cylinder cap	25	Upper spacer
12	Disc	26	Control unit cap
13	OR seal ring	27	Tie rod
14a	Upper stem	28	OR seal ring
14b	Lower stem	29	Solenoid valve
15	Spring holder	30	Microswitch
16	Piston	31	Cable grommet
17	OR seal ring	32	Connector
18	Spring	33	Air vent
19	OR seal ring	34	Nut
20	Cylinder	35	Leakage detection hole
21	Air union		

Normally open pneumatic diaphragm valve with control unit



Normally closed pneumatic diaphragm valve with control unit





No.	Code	Norm	1/2"	3/4"	1"	1 1/2"	2"	Material
7	57	E	12	19	25	38	51	6L
7	57	T	12	19	25	38	51	6L
8	57		12	19	25	38	51	E
8	57		12	19	25	38	51	T
9	57	W	12,7	19,05	25,4	38,1	50,8	6L
9	57	K	12	19	25	38	51	6L
11	58		12	19/25	19/25	38/51	38/51	4L
12	58	NA	12	19/25	19/25	38/51	38/51	4L
13	OR		3056	123	123	123	123	N
14a	58	NA	12	19	25	38	51	6L
14b	58	NA	12	19/25	19/25	38/51	38/51	6L
14a	58	NC	12	19	25	38	51	6L
14b	58	NC	12	19/25	19/25	38/51	38/51	6L
15	58		12	12	12	12	12	T
16	58		12	19/25	19/25	38/51	38/51	AL
17	OR		6150	6275	6275	6400	6400	N
18	58		NA12	12	12	NA 38/51	NA 38/51	4L
19	OR		3206	3325	3325	3450	3450	N
20	58		12	19	25	38	51	6L
21	58		1/8"	1/8"	1/8"	1/8"	1/8"	4L
22	OR		106	108	108	108	108	N
23	58	NA	12	19	25	38	51	T
23	58	NC	12	19	25	38	51	T
24	58		3 x 15	3 x 15	3 x 15	3 x 15	3 x 15	6L
25	58	NA	12	19	25	38	51	T
26	60		12	19/25	19/25	38/51	38/51	4L
27	60		12/51	12/51	12/51	12/51	12/51	4L
28	OR		2262	2300	2300	2375	2375	N
29	015		U	U	U	U	U	
30	014		1	1	1	1	1	
31	026		12/51	12/51	12/51	12/51	12/51	4L
32	030 S		s	s	s	s	s	
33	58		1/8"	1/8"	1/8"	1/8"	1/8"	4L
34	60		12/51	12/51	12/51	12/51	12/51	4L



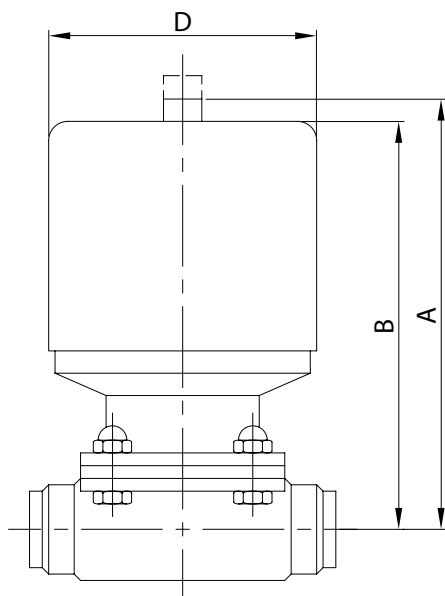
Ends:

DN	BS			ASTM				ISO		DIN					
	D.E.	+16 swg Sp.	18 swg. Sp.	D.E.	5S Sp.	10S Sp.	40S Sp.	D.E.	Sp.	Serie 1		Serie 2		Serie 3	
		D.E.	Sp.		D.E.	Sp.	D.E.			Sp.	D.E.	Sp.			
15	12,70	1,63	1,22	21,34	1,65	2,11	2,77	21,3	1,6	18	1	19	1,5	20	2
20	19,05	1,63	1,22	26,67	1,65	2,11	2,87	26,9	1,6	22	1	23	1,5	24	2
25	25,40	1,63	1,22	33,40	1,65	2,77	3,38	33,7	2,0	28	1	29	1,5	30	2
40	38,10	1,63	1,22	48,26	1,65	2,77	3,68	48,3	2,0	40	1	41	1,5	42	2
50	50,80	1,63	1,22	60,33	1,65	2,77	3,91	60,3	2,6	52	1	53	1,5	54	2

CV and KV values :

Opening %	DN 15 1/2"		DN 20 3/4"		DN 25 1"		DN 40 1 1/2"		DN 50 2"	
	CV US gal/min	KV l/s	CV US gal/min	KV l/s	CV US gal/min	KV l/s	CV US gal/min	KV l/s	CV US gal/min	KV l/s
100	6,7	1,6	13,3	3,16	20	4,76	50	12	101	24,04
90	6,4	1,5	12,8	3,04	19,2	4,57	48	11,4	97	23,1
80	6,11	1,45	12,3	2,9	18,4	4,37	46	11	92,9	22,1
70	5,85	1,4	11,7	2,8	17,6	4,2	44	10,5	88,9	21,15
60	5,58	1,32	11,2	2,65	16,8	4	42	10	84,83	20,2
50	4,65	1,1	9,3	2,2	14	3,33	35	8,4	70,7	16,83
40	3,7	0,9	7,45	1,76	11,2	2,66	28	6,7	56,5	13,46
30	2,8	0,65	5,6	1,3	8,4	2	21	5	42,4	10,1
20	1,85	0,43	3,7	0,9	5,6	1,33	14	3,8	28,27	6,73
10	0,92	0,21	1,85	0,43	2,8	0,66	7	1,66	14,13	3,36
0	0	0	0	0	0	0	0	0	0	0

Dimensions, air volumes and operating times:

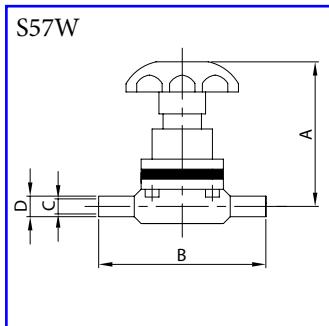


Valve diam.	A	B	D	Air closes	Air opens	Time
mm	mm	mm	mm	cm <sup>3</sup>	cm <sup>3</sup>	s
15	125	120	70	50	20	1
20	140	135	89	230	65	1
25	145	140	89	230	65	1
40	208	203	129	1000	250	2
50	220	215	129	1000	350	2

Valve diam.	A	B	D	Air closes	Air opens	Time
in	in	in	in	in <sup>3</sup>	in <sup>3</sup>	s
1/2"	5"	4 3/4"	2 3/4"	3	1	1
3/4"	5 1/2"	5 3/8"	3 1/2"	13	4	1
1"	5 3/4"	5 1/2"	3 1/2"	13	4	1
1 1/2"	8"	8"	5"	60,5	15	2
2"	9"	8 1/2"	5"	61	20	2

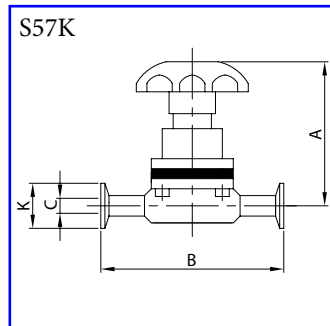


Diaphragm microvalve  
plain ends  
AISI 316LS, AISI 316LL



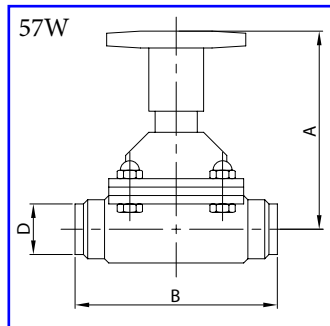
DN	A	B	C	D	Kg
6	66,5	67,0	3,9	6,3	0,19
9	66,5	67,0	7,1	9,5	0,19
12	66,5	67,0	9,4	12,7	0,19

Diaphragm microvalve  
end ferrule CLAMP  
AISI 316LS, AISI 316LL



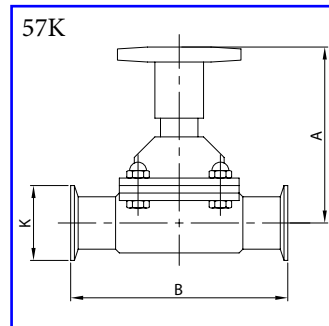
DN	A	B	C	K	Kg
12	66,5	67,0	9,4	25,0	0,20

Diaphragm valve  
plain ends  
AISI 316LS, AISI 316LL



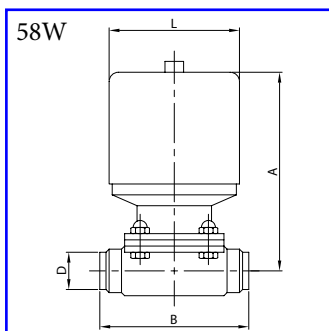
DN	A	B	D	Kg
12	78,0	89,0	12,7	0,84
19	79,0	102,0	19,0	1,20
25	92,0	114,0	25,4	1,68
38	112,0	140,0	38,1	3,14
51	135,0	159,0	50,8	5,04

Diaphragm valve  
end ferrule CLAMP  
AISI 316LS, AISI 316LL



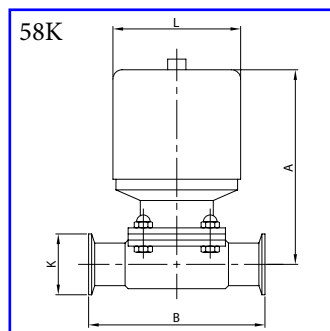
DN	A	B	K	Kg
12	78,0	89,0	25,0	0,84
19	79,0	102,0	25,0	1,20
25	92,0	114,0	50,5	1,68
38	112,0	140,0	50,5	3,14
51	135,0	159,0	64,0	5,04

Pneum. diaphragm valve  
plain ends  
AISI 316LS, AISI 316LL



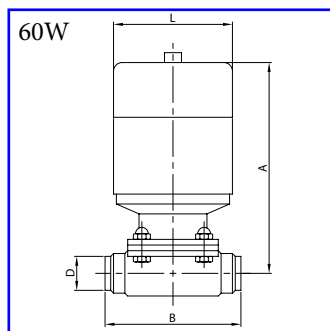
DN	A	B	D	L	Kg
12	110,0	89,0	12,7	60,0	1,36
19	123,0	102,0	19,0	90,0	2,46
25	129,0	114,0	25,4	90,0	2,78
38	187,0	140,0	38,1	127,0	6,88
51	198,0	159,0	50,8	127,0	8,16

Pneum. diaphragm valve  
end ferrule CLAMP  
AISI 316LS, AISI 316LL



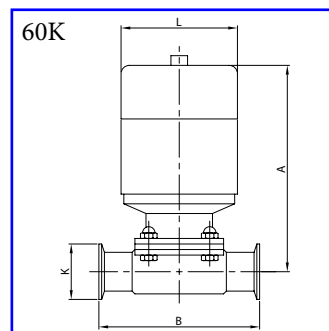
DN	A	B	K	L	Kg
12	111,0	89,0	25,0	60,0	1,36
19	123,0	102,0	25,0	90,0	2,46
25	129,0	114,0	50,5	90,0	2,78
38	187,0	140,0	50,5	127,0	6,88
51	198,0	159,0	64,0	127,0	8,16

Diaph. v. with control unit  
plain ends  
AISI 316LS, AISI 316LL



DN	A	B	D	L	Kg
12	153,0	89,0	12,7	60,0	1,66
19	154,0	102,0	19,0	90,0	3,01
25	167,0	114,0	25,4	90,0	3,33
38	187,0	140,0	38,1	127,0	7,88
51	210,0	159,0	50,8	127,0	9,16

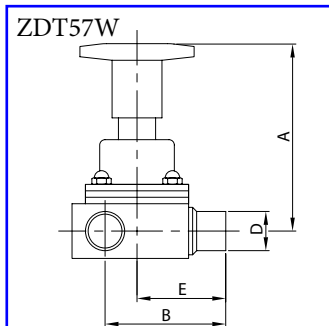
Diaph. v. with control unit  
end ferrule CLAMP  
AISI 316LS, AISI 316LL



DN	A	B	K	L	Kg
12	153,0	89,0	25,0	60,0	1,66
19	154,0	102,0	25,0	90,0	3,01
25	167,0	114,0	50,5	90,0	3,33
38	187,0	140,0	50,5	127,0	7,88
51	210,0	159,0	64,0	127,0	9,16

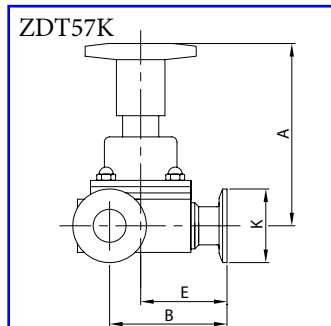


Diaphragm valve 3-way T  
plain ends  
AISI 316LS, AISI 316LL



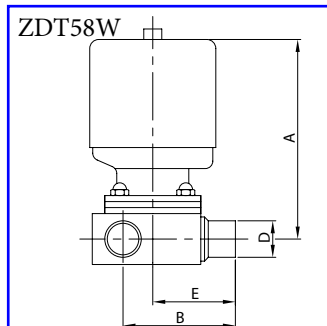
DN	A	B	D	E	Kg
12	97,5	56,5	12,7	44,5	0,84
19	99,0	66,5	19,0	51,0	1,20
25	120,0	80,0	25,4	57,0	1,68
38	156,0	101,5	38,1	70,0	3,14
51	182,0	118,5	50,8	79,5	5,04

Diaphragm valve 3-way T  
end ferrule CLAMP  
AISI 316LS, AISI 316LL



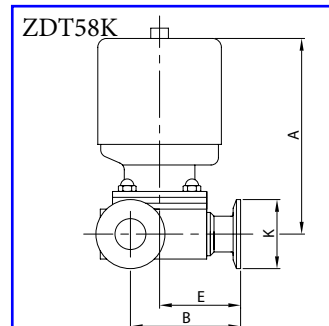
DN	A	B	E	K	Kg
12	97,5	56,5	44,5	25,0	0,84
19	99,0	66,5	51,0	25,0	1,20
25	120,0	80,0	57,0	50,5	1,68
38	156,0	101,5	70,0	50,5	3,14
51	182,0	118,5	79,5	64,0	5,04

Pneum. diaph. valve 3-way T  
plain ends  
AISI 316LS, AISI 316LL



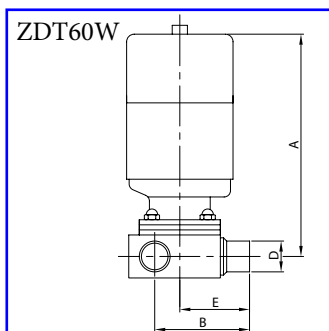
DN	A	B	D	E	Kg
12	110,0	56,5	12,7	44,5	1,36
19	123,0	66,5	19,0	51,0	2,46
25	129,0	80,0	25,4	57,0	2,78
38	188,0	101,5	38,1	70,0	6,88
51	201,0	118,5	50,8	79,5	8,16

Pneum. diaph. valve 3-way T  
end ferrule CLAMP  
AISI 316LS, AISI 316LL



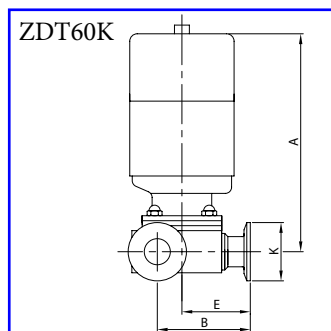
DN	A	B	E	K	Kg
12	110,0	56,5	44,5	25,0	1,36
19	123,0	66,5	51,0	25,0	2,46
25	219,0	80,0	57,0	50,0	2,78
38	188,0	101,5	70,0	50,5	6,88
51	201,0	118,5	79,5	64,0	8,16

Diaph. v. control unit 3-way T  
plain ends  
AISI 316LS, AISI 316LL



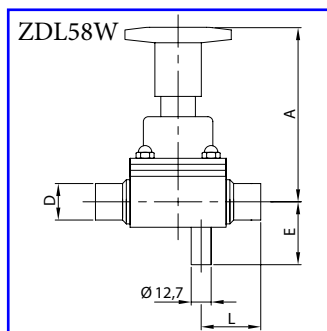
DN	A	B	D	E	Kg
12	186,0	56,5	12,7	44,5	1,66
19	198,0	66,5	19,0	51,0	3,01
25	204,0	80,0	25,4	57,0	3,33
38	263,0	101,5	38,1	70,0	7,88
51	276,0	118,5	50,8	79,5	9,16

Diaph. v. control unit 3-way T  
end ferrule CLAMP  
AISI 316LS, AISI 316LL



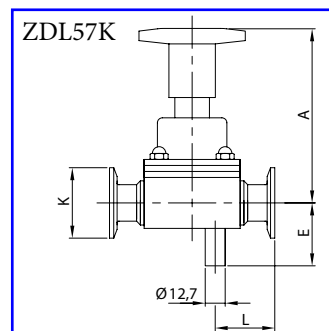
DN	A	B	E	K	Kg
12	186,0	56,5	44,5	25,0	1,66
19	198,0	66,5	51,0	25,0	3,01
25	204,0	80,0	57,0	50,5	3,33
38	263,0	101,5	70,0	50,5	7,88
51	276,0	118,5	79,5	64,0	9,16

Sampling diaphragm valve  
plain ends  
AISI 316LS, AISI 316LL



DN	A	D	E	L	Kg
12	94,5	12,7	34,5	27,0	0,84
19	96,0	19,0	39,0	32,0	1,20
25	116,0	25,4	42,0	37,0	1,68
38	155,0	38,1	59,0	42,0	3,14
51	182,0	50,8	66,0	46,0	5,04

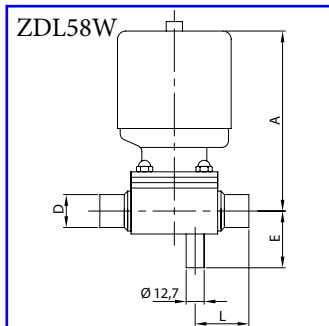
Sampling diaphragm valve  
end ferrule CLAMP  
AISI 316LS, AISI 316LL



DN	A	E	K	L	Kg
12	94,5	34,5	25,0	27,0	0,84
19	96,0	39,0	25,0	32,0	1,20
25	116,0	42,0	50,5	37,0	1,68
38	155,0	59,0	50,5	42,0	3,14
51	182,0	66,0	64,0	46,0	5,04

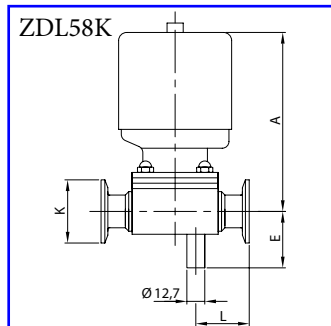


Sampling pneum. diaph. valve  
plain ends  
AISI 316LS, AISI 316LL



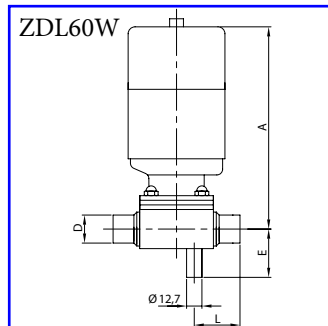
DN	A	D	E	L	Kg
12	107,0	12,7	34,5	27,0	1,36
19	120,0	19,0	39,0	32,0	2,46
25	125,0	25,4	42,0	37,0	2,78
38	187,0	38,1	59,0	42,0	6,88
51	201,0	50,8	66,0	46,0	8,16

Sampling pneum. diaph. valve  
end ferrule CLAMP  
AISI 316LS, AISI 316LL



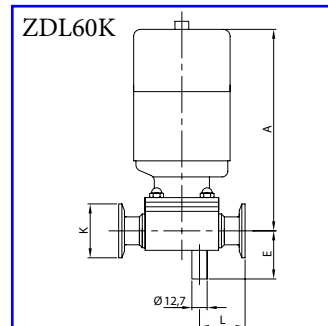
DN	A	E	K	L	Kg
12	107,0	34,5	25,0	27,0	1,36
19	120,0	39,0	25,0	32,0	2,46
25	125,0	42,0	50,5	37,0	2,78
38	187,0	59,0	50,5	42,0	6,88
51	201,0	66,0	64,0	46,0	8,16

Sampl. p. d. v. control unit  
plain ends  
AISI 316LS, AISI 316LL



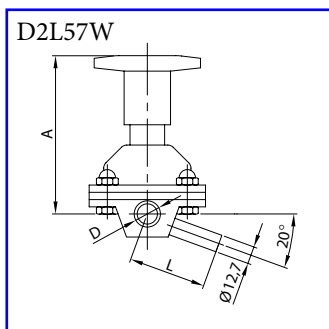
DN	A	D	E	L	Kg
12	183,0	12,7	34,5	27,0	1,66
19	195,0	19,0	39,0	32,0	3,01
25	200,0	25,4	42,0	37,0	3,33
38	262,0	38,1	59,0	42,0	7,88
51	276,0	50,8	66,0	46,0	9,16

Sampl. p. d. v. control unit  
end ferrule CLAMP  
AISI 316LS, AISI 316LL



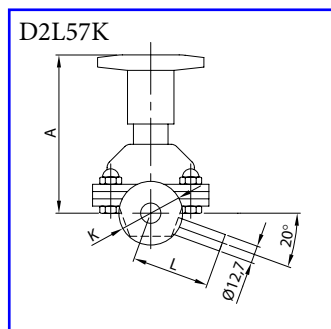
DN	A	E	K	L	Kg
12	183,0	34,5	25,0	27,0	1,66
19	195,0	39,0	25,0	32,0	3,01
25	200,0	42,0	50,5	37,0	3,33
38	262,0	59,0	50,5	42,0	7,88
51	276,0	66,0	64,0	46,0	9,16

20° sampling diaphragm valve  
plain ends  
AISI 316LS, AISI 316LL



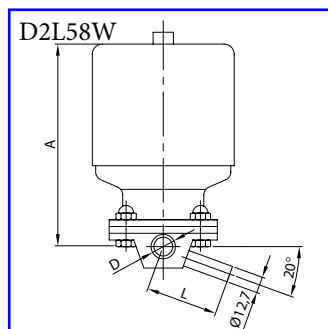
DN	A	D	L	Kg
12	94,5	12,7	46,0	0,84
19	96,0	19,0	50,0	1,20
25	116,0	25,4	55,0	1,68
38	155,0	38,1	71,0	3,14
51	182,0	50,8	84,0	5,04

20° sampling diaphragm valve  
end ferrule CLAMP  
AISI 316LS, AISI 316LL



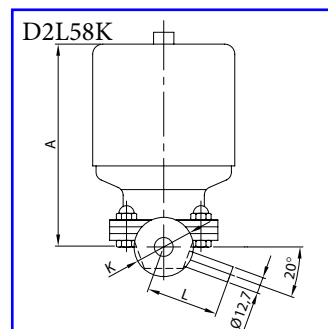
DN	A	K	L	Kg
12	94,5	25,0	46,0	0,84
19	96,0	25,0	50,0	1,20
25	116,0	50,5	55,0	1,68
38	155,0	50,5	71,0	3,14
51	182,0	64,0	84,0	5,04

20° sampl. pneum. diaph.valve  
plain ends  
AISI 316LS, AISI 316LL



DN	A	D	L	Kg
12	107,0	12,7	46,0	1,36
19	120,0	19,0	50,0	2,46
25	125,0	25,4	55,0	2,78
38	187,0	38,1	71,0	6,88
51	201,0	50,8	84,0	8,16

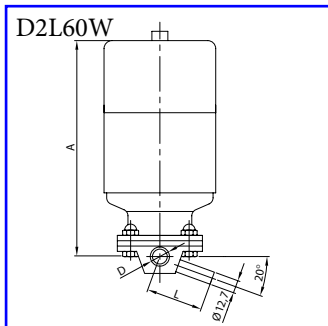
20° sampl. pneum. diaph.valve  
end ferrule CLAMP  
AISI 316LS, AISI 316LL



DN	A	K	L	Kg
12	107,0	25,0	46,0	1,36
19	120,0	25,0	50,0	2,46
25	125,0	50,5	55,0	2,78
38	187,0	50,5	71,0	6,88
51	201,0	64,0	84,0	8,16

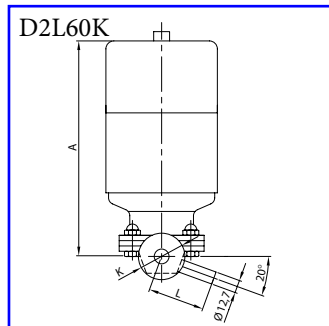


20° sampl. diaph. v. cont. unit  
plain ends  
AISI 316LS, AISI 316LL



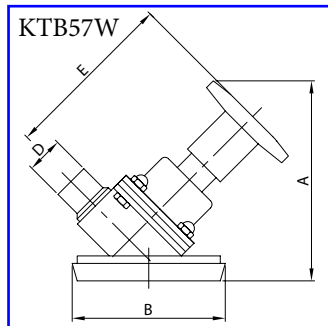
DN	A	D	L	Kg	
1/2"	12	183,0	12,7	46,0	1,66
3/4"	19	195,0	19,0	50,0	3,01
1"	25	200,0	25,4	55,0	3,33
1 1/2"	38	262,0	38,1	71,0	7,88
2"	51	276,0	50,8	84,0	9,16

20° sampl. diaph. v. cont. unit  
end ferrule CLAMP  
AISI 316LS, AISI 316LL



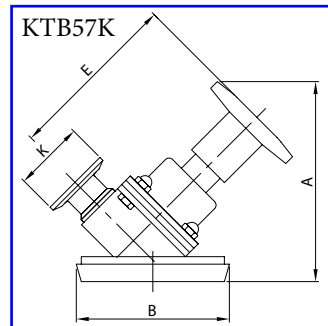
DN	A	K	L	Kg	
1/2"	12	183,0	25,0	46,0	1,66
3/4"	19	195,0	25,0	50,0	3,01
1"	25	200,0	50,5	55,0	3,33
1 1/2"	38	262,0	50,5	71,0	7,88
2"	51	276,0	64,0	84,0	9,16

Tank bottom diaphragm valve  
plain end  
AISI 316LS, AISI 316LL



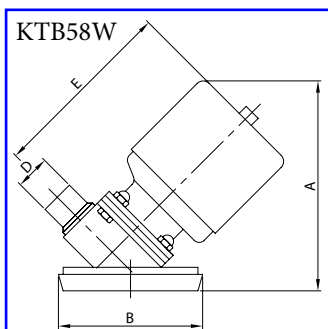
DN	A	B	D	E	Kg	
1/2"	12	117,0	68,0	12,7	94,5	1,04
3/4"	19	123,0	86,0	19,0	96,0	1,55
1"	25	142,0	100,0	25,4	116,0	2,03
1 1/2"	38	181,0	121,0	38,1	155,0	4,09
2"	51	206,0	150,0	50,8	182,0	7,09

Tank bottom diaphragm valve  
end ferrule CLAMP  
AISI 316LS, AISI 316LL



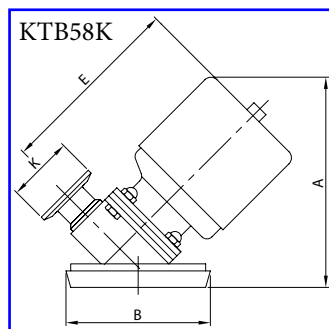
DN	A	B	E	K	Kg	
1/2"	12	117,0	68,0	94,5	25,0	1,04
3/4"	19	123,0	86,0	96,0	25,0	1,55
1"	25	142,0	100,0	116,0	50,5	2,03
1 1/2"	38	181,0	121,0	155,0	50,5	4,09
2"	51	206,0	150,0	182,0	64,0	7,09

Tank bottom pneum. diaph. v.  
plain end  
AISI 316LS, AISI 316LL



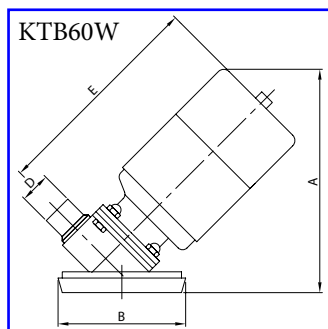
DN	A	B	D	E	Kg	
1/2"	12	125,0	68,0	12,7	107,0	1,56
3/4"	19	147,0	86,0	19,0	120,0	2,81
1"	25	152,0	100,0	25,4	125,0	3,13
1 1/2"	38	210,0	121,0	38,1	187,0	7,83
2"	51	227,0	150,0	50,8	201,0	10,21

Tank bottom pneum. diaph. v.  
end ferrule CLAMP  
AISI 316LS, AISI 316LL



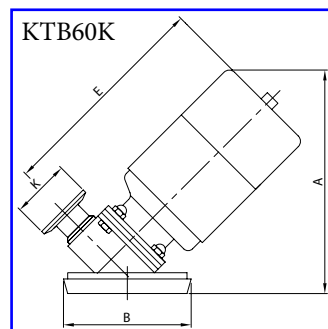
DN	A	B	E	K	Kg	
1/2"	12	125,0	68,0	107,0	25,0	1,56
3/4"	19	147,0	86,0	120,0	25,0	2,81
1"	25	152,0	100,0	125,0	50,5	3,13
1 1/2"	38	210,0	121,0	187,0	50,5	7,83
2"	51	227,0	150,0	201,0	64,0	10,21

Tank bottom pneum. d. valve  
control unit - plain end  
AISI 316LS, AISI 316LL



DN	A	B	D	E	Kg	
1/2"	12	187,0	68,0	12,7	183,0	1,86
3/4"	19	201,0	86,0	19,0	195,0	3,36
1"	25	204,0	100,0	25,4	200,0	3,68
1 1/2"	38	262,0	121,0	38,1	262,0	8,83
2"	51	274,0	150,0	50,8	276,0	11,21

Tank bottom pneum. d. valve  
contr. u. - end ferrule CLAMP  
AISI 316LS, AISI 316LL



DN	A	B	E	K	Kg	
1/2"	12	187,0	68,0	183,0	25,0	1,86
3/4"	19	201,0	86,0	195,0	25,0	3,36
1"	25	204,0	100,0	200,0	50,5	3,68
1 1/2"	38	262,0	121,0	262,0	50,5	8,83
2"	51	274,0	150,0	276,0	64,0	11,21



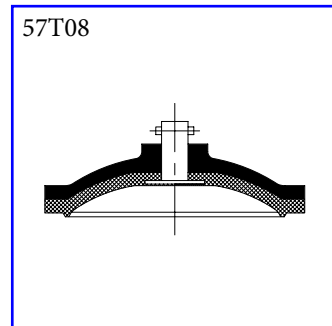
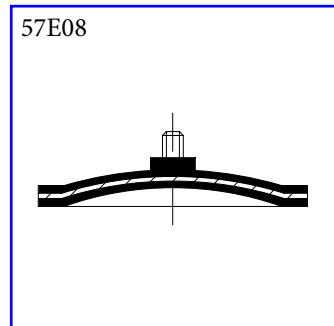
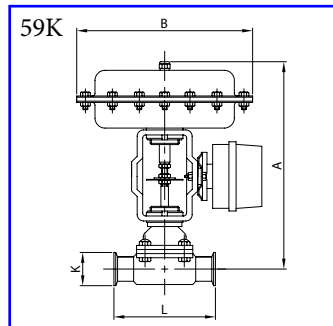
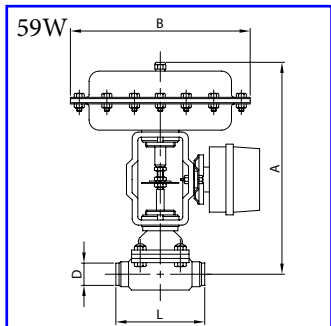


Modulating diaphragm valve  
plain end  
AISI 316LS, AISI 316LL

Modulating diaphragm valve  
end ferrule CLAMP  
AISI 316LS, AISI 316LL

Diaphragm  
EPDM

Diaphragm  
PTFE



DN	A	B	D	L	Kg
1/2"	12	305,5	290	12,7	89 11,84
3/4"	19	307,0	290	19,0	102 12,20
1"	25	311,0	290	25,4	114 12,68
1 1/2"	38	330,5	290	38,1	140 14,14
2"	51	345,5	290	50,8	159 16,04

DN	A	B	K	L	Kg
1/2"	12	305,5	290	25,0	89 11,84
3/4"	19	307,0	290	25,0	102 12,20
1"	25	311,0	290	50,5	114 12,68
1 1/2"	38	330,5	290	50,5	140 14,14
2"	51	345,5	290	64,0	159 16,04

Solenoi valve NC.

Connector

Microswitch

Proximity contact

