



**CONCENTRIC / ECCENTRIC  
FOR WELDING / THREADED / CLAMP ...  
DIN / SMS / ISO / ASME ...  
SPECIAL REDUCERS ACCORDING TO YOUR DRAWINGS**



**On demand:**

other materials / dimensions / with  
CLAMP ends ...

**Inner surface on demand:**

E-polished

Ra ≤ 0,8/1,6 μm

Ra ≤ 0,8/0,8 μm

Ra ≤ 0,6 μm

Ra ≤ 0,5 μm

Ra ≤ 0,4 μm

Ra ≤ 0,25 μm

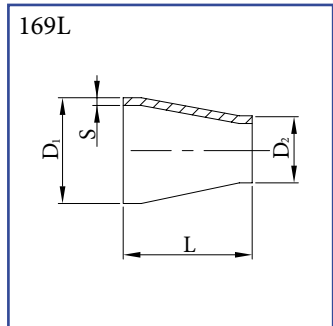
**Outer surface on demand:**

standard

grinded

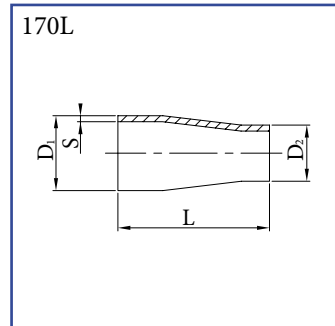
polished

**Concentric reducer DIN row 1  
for welding  
AISI 304/L, AISI 316/L**



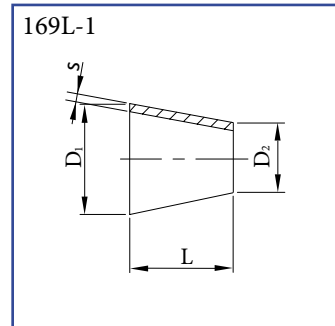
DN	D1	D2	S	L	kg
15/10	18,0	12,0	1,5	38,0	0,03
20/10	22,0	12,0	1,5	38,0	0,04
20/15	22,0	18,0	1,5	38,0	0,04
25/10	28,0	12,0	1,5	38,0	0,05
25/15	28,0	18,0	1,5	38,0	0,05
25/20	28,0	22,0	1,5	38,0	0,05
32/25	34,0	28,0	1,5	67,0	0,06
40/25	40,0	28,0	1,5	67,0	0,06
40/32	40,0	34,0	1,5	67,0	0,06
50/25	52,0	28,0	1,5	67,0	0,10
50/32	52,0	34,0	1,5	67,0	0,10
50/40	52,0	40,0	1,5	67,0	0,11
65/40	70,0	40,0	2,0	67,0	0,12
65/50	70,0	52,0	2,0	67,0	0,16
80/40	85,0	40,0	2,0	88,0	0,18
80/50	85,0	52,0	2,0	67,0	0,19
80/65	85,0	70,0	2,0	67,0	0,24
100/50	104,0	52,0	2,0	107,0	0,30
100/65	104,0	70,0	2,0	72,0	0,29
100/80	104,0	85,0	2,0	67,0	0,28

**Concentric reducer DIN row 1  
for welding - long  
AISI 304/L, AISI 316/L**



DN	D1	D2	S	L	kg
15/10	18,0	12,0	1,25	67,0	0,03
20/10	22,0	12,0	1,25	67,0	0,04
20/15	22,0	18,0	1,25	67,0	0,04
25/10	28,0	12,0	1,5	67,0	0,05
25/15	28,0	18,0	1,5	67,0	0,05
25/20	28,0	22,0	1,5	67,0	0,05
32/10	34,0	12,0	1,5	67,0	0,08
32/15	34,0	18,0	1,5	67,0	0,08
32/20	34,0	22,0	1,5	98,0	0,09
32/25	34,0	28,0	1,5	88,0	0,09
40/10	40,0	12,0	1,5	67,0	0,10
40/15	40,0	18,0	1,5	67,0	0,11
40/20	40,0	22,0	1,5	105,0	0,11
40/25	40,0	28,0	1,5	98,0	0,12
40/32	40,0	34,0	1,5	88,0	0,12
50/25	52,0	28,0	1,5	134,0	0,16
50/32	52,0	34,0	1,5	105,0	0,21
50/40	52,0	40,0	1,5	98,0	0,18
65/32	70,0	34,0	2,0	120,0	0,22
65/40	70,0	40,0	2,0	120,0	0,22
65/50	70,0	52,0	2,0	105,0	0,27
80/40	85,0	40,0	2,0	147,0	0,44
80/50	85,0	52,0	2,0	125,0	0,43
80/65	85,0	70,0	2,0	105,0	0,50
100/50	104,0	52,0	2,0	165,0	0,53
100/65	104,0	70,0	2,0	127,0	0,525
100/80	104,0	85,0	2,0	120,0	0,55

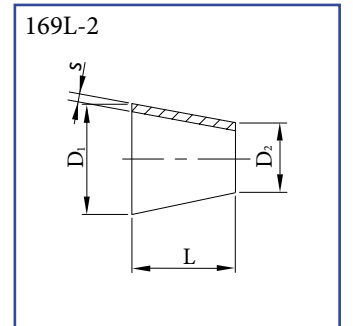
**Concentric reducer DIN row 1  
for welding - short  
AISI 304/L, AISI 316/L**



DN	D1	D2	S	L*	kg
15/10	18,0	12,0	1,5	11,5	0,01
20/10	22,0	12,0	1,5	15,0	0,02
20/15	22,0	18,0	1,5	22,0	0,03
25/10	28,0	12,0	1,5	25,0	0,02
25/15	28,0	18,0	1,5	15,0	0,05
25/20	28,0	22,0	1,5	17,0	0,05
32/10	34,0	12,0	1,5	30,0	0,03
32/15	34,0	18,0	1,5	30,0	0,03
32/20	34,0	22,0	1,5	18,0	0,06
32/25	34,0	28,0	1,5	19,5	0,06
40/15	40,0	18,0	1,5	30,0	0,04
40/20	40,0	22,0	1,5	30,0	0,04
40/25	40,0	28,0	1,5	19,0	0,06
40/32	40,0	34,0	1,5	20,5	0,06
50/25	52,0	28,0	1,5	71,0	0,08
50/32	52,0	34,0	1,5	26,5	0,07
50/40	52,0	40,0	1,5	28,5	0,07
65/40	70,0	40,0	2,0	38,0	0,10
65/50	70,0	52,0	2,0	29,0	0,10
80/40	85,0	40,0	2,0	92,0	0,16
80/50	85,0	52,0	2,0	46,0	0,11
80/65	85,0	70,0	2,0	34,5	0,11
100/65	104,0	70,0	2,0	44,5	0,28
100/80	104,0	85,0	2,0	45,0	0,17
125/65	129,0	70,0	2,0	106,0	0,44
125/80	129,0	85,0	2,0	79,0	0,41
125/100	129,0	104,0	2,0	45,0	0,55
150/80	154,0	85,0	2,0	124,0	0,50
150/100	154,0	104,0	2,0	90,0	0,45
150/125	154,0	129,0	2,0	45,0	0,40
200/150	204,0	154,0	2,0	90,0	0,79

\* length on demand  
(length of reducers can be different  
on our stock - please check it with our  
sales department)

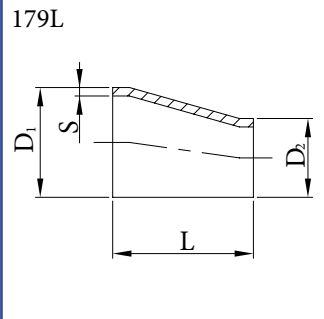
**Concentric reducer DIN row 2  
for welding - short  
AISI 304/L, AISI 316/L**



DN	D1	D2	S	L*	kg
15/10	19,0	13,0	1,5	11,0	0,01
20/10	23,0	13,0	1,5	18,0	0,02
20/15	23,0	19,0	1,5	7,0	0,01
25/10	29,0	13,0	1,5	28,0	0,02
25/15	29,0	19,0	1,5	18,0	0,02
25/20	29,0	23,0	1,5	11,0	0,01
32/15	35,0	19,0	1,5	28,0	0,03
32/20	35,0	23,0	1,5	22,0	0,02
32/25	35,0	29,0	1,5	11,0	0,02
40/20	41,0	23,0	1,5	33,0	0,04
40/25	41,0	29,0	1,5	22,0	0,03
40/32	41,0	35,0	1,5	11,0	0,04
50/25	53,0	29,0	1,5	44,0	0,08
50/32	53,0	35,0	1,5	33,0	0,08
50/40	53,0	41,0	1,5	22,0	0,09
65/32	70,0	35,0	2,0	62,0	0,12
65/40	70,0	41,0	2,0	51,0	0,11
65/50	70,0	53,0	2,0	29,0	0,09
80/40	85,0	41,0	2,0	92,0	0,16
80/50	85,0	53,0	2,0	56,0	0,12
100/50	104,0	53,0	2,0	90,0	0,29

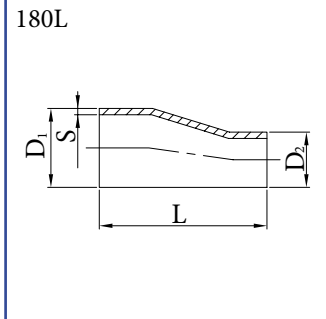
\* length on demand  
(length of reducers can be different  
on our stock - please check it with our  
sales department)

Reducer eccentric DIN-1  
for welding  
AISI 304/L, AISI 316/L



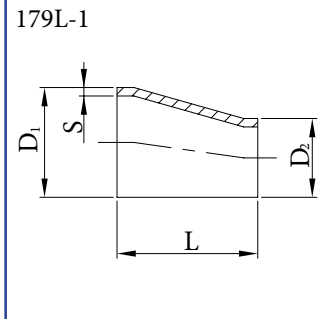
DN	D1	D2	S	L	kg
32/25	34,0	28,0	1,5	67,0	0,06
40/25	40,0	28,0	1,5	67,0	0,06
40/32	40,0	34,0	1,5	67,0	0,06
50/25	52,0	28,0	1,5	68,0	0,10
50/32	52,0	34,0	1,5	67,0	0,10
50/40	52,0	40,0	1,5	67,0	0,11
65/40	70,0	40,0	2,0	71,0	0,12
65/50	70,0	52,0	2,0	67,0	0,16
80/50	85,0	52,0	2,0	79,0	0,19
80/65	85,0	70,0	2,0	67,0	0,24
101/50	101,6	52,0	2,0	110,0	0,30
101/65	101,6	70,0	2,0	67,0	0,29
101/80	101,6	85,0	2,0	67,0	0,28

Reducer eccentric DIN-1  
for welding - long  
AISI 304/L, AISI 316/L



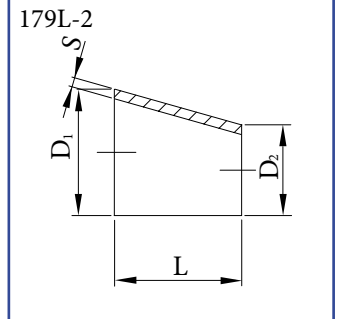
DN	D1	D2	S	L	kg
32/25	34,0	28,0	1,5	102,0	0,12
40/25	40,0	28,0	1,5	110,0	0,12
40/32	40,0	34,0	1,5	102,0	0,13
50/25	52,0	28,0	1,5	130,0	0,16
50/32	52,0	34,0	1,5	120,0	0,20
50/40	52,0	40,0	1,5	110,0	0,16
65/40	70,0	40,0	2,0	153,0	0,23
65/50	70,0	52,0	2,0	130,0	0,24
80/50	85,0	52,0	2,0	146,0	0,43
80/65	85,0	70,0	2,0	120,0	0,50
101/50	101,6	52,0	2,0	150,0	0,56
101/65	101,6	70,0	2,0	153,0	0,55
101/80	101,6	85,0	2,0	118,0	0,55

Reducer eccentric DIN-1  
for welding - short  
AISI 304/L, AISI 316/L



DN	D1	D2	S	L	kg
15/10	18,0	12,0	1,5	25,0	0,01
20/10	22,0	12,0	1,5	30,0	0,02
25/10	28,0	12,0	1,5	35,0	0,02
25/15	28,0	18,0	1,5	30,0	0,02
25/20	28,0	22,0	1,5	30,0	0,03
32/20	34,0	22,0	1,5	35,0	0,03

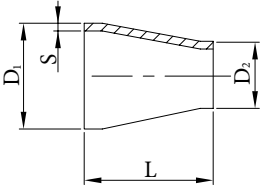
Reducer eccentric DIN-2  
for welding - short  
AISI 304/L, AISI 316/L



DN	D1	D2	S	L	kg
15/10	19,0	13,0	1,5	16,5	0,01
20/10	23,0	13,0	1,5	27,5	0,02
20/15	23,0	19,0	1,5	11,0	0,01
25/10	29,0	13,0	1,5	44,0	0,01
25/15	29,0	19,0	1,5	27,5	0,02
25/20	29,0	23,0	1,5	16,5	0,03
32/15	35,0	19,0	1,5	44,0	0,03
32/20	35,0	23,0	1,5	33,0	0,03
32/25	35,0	29,0	1,5	16,5	0,04
40/15	41,0	19,0	1,5	60,5	0,05
40/20	41,0	23,0	1,5	49,5	0,04
40/25	41,0	29,0	1,5	33,0	0,05
40/32	41,0	35,0	1,5	16,5	0,07
50/25	53,0	29,0	1,5	66,0	0,08
50/32	53,0	35,0	1,5	49,5	0,11
50/40	53,0	41,0	1,5	33,0	0,07
65/40	70,0	41,0	2,0	77,0	0,17
65/50	70,0	53,0	2,0	44,0	0,11
80/50	85,0	53,0	2,0	85,0	0,21
80/65	85,0	70,0	2,0	41,2	0,14
100/50	104,0	53,0	2,0	137,5	0,80
100/65	104,0	70,0	2,0	93,5	0,34
100/80	104,0	85,0	2,0	52,5	0,20
125/80	129,0	85,0	2,0	121,0	0,38
125/100	129,0	104,0	2,0	68,5	0,28
150/100	154,0	104,0	2,0	137,5	0,53
150/125	154,0	129,0	2,0	68,5	0,29

Reducer concentric SMS  
for welding  
AISI 304/L, AISI 316/L

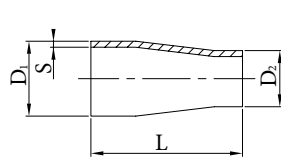
169S



DN	D1	D2	S	L	kg
38/25	38,1	25,4	1,5	67,0	0,08
51/25	50,8	25,4	1,5	67,0	0,10
51/38	50,8	38,1	1,5	67,0	0,10
63/38	63,5	38,1	1,65	67,0	0,14
63/51	63,5	50,8	1,65	67,0	0,16
76/38	76,2	38,1	1,65	67,0	0,16
76/51	76,2	50,8	1,65	67,0	0,18
76/63	76,2	63,5	1,65	67,0	0,22
101/51	101,6	50,8	2,0	107,0	0,31
101/63	101,6	63,5	2,0	82,0	0,30
101/76	101,6	76,2	2,0	67,0	0,28

Reducer concentric SMS  
for welding - long  
AISI 304/L, AISI 316/L

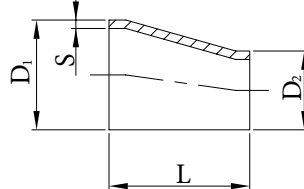
170S



DN	D1	D2	S	L	kg
38/25	38,1	25,4	1,5	97,0	0,11
51/25	50,8	25,4	1,5	115,0	0,17
51/38	50,8	38,1	1,5	97,0	0,15
63/38	63,5	38,1	1,65	115,0	0,23
63/51	63,5	50,8	1,65	97,0	0,19
76/38	76,2	38,1	1,65	132,0	0,30
76/51	76,2	50,8	1,65	115,0	0,26
76/63	76,2	63,5	1,65	97,0	0,24
101/51	101,6	50,8	2,0	145,0	0,59
101/63	101,6	63,5	2,0	120,0	0,58
101/76	101,6	76,2	2,0	120,0	0,58

Reducer eccentric SMS  
for welding  
AISI 304/L, AISI 316/L

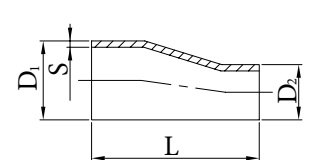
179S



DN	D1	D2	S	L	kg
38/25	38,1	25,4	1,5	67,0	0,08
51/25	50,8	25,4	1,5	73,0	0,10
51/38	50,8	38,1	1,5	67,0	0,10
63/38	63,5	38,1	1,65	71,0	0,14
63/51	63,5	50,8	1,65	67,0	0,16
76/38	76,2	38,1	1,65	80,0	0,16
76/51	76,2	50,8	1,65	67,0	0,18
76/63	76,2	63,5	1,65	67,0	0,22
101/51	101,6	50,8	2,0	110,0	0,31
101/63	101,6	63,5	2,0	88,0	0,30
101/76	101,6	76,2	2,0	67,0	0,28

Reducer eccentric SMS  
for welding - long  
AISI 304/L, AISI 316/L

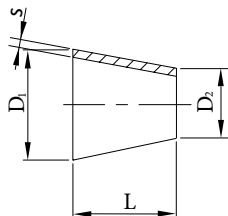
180S



DN	D1	D2	S	L	kg
38/25	38,1	25,4	1,5	104,0	0,13
51/25	50,8	25,4	1,5	120,0	0,17
51/38	50,8	38,1	1,5	105,0	0,16
63/38	63,5	38,1	1,65	130,0	0,20
63/51	63,5	50,8	1,65	103,0	0,22
76/38	76,2	38,1	1,65	139,0	0,30
76/51	76,2	50,8	1,65	126,0	0,28
76/63	76,2	63,5	1,65	105,0	0,25
101/51	101,6	50,8	2,0	150,0	0,59
101/63	101,6	63,5	2,0	143,0	0,67
101/76	101,6	76,2	2,0	128,0	0,63

Reducer concentric ISO  
for welding  
AISI 304/L, AISI 316/L

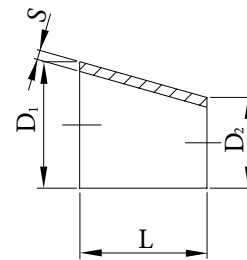
169I



DN	D1	D2	S	L	kg
15/10	21,3	17,2	2,0	12,0	0,03
20/10	26,9	17,2	2,0	29,0	0,06
20/15	26,9	21,3	2,0	17,0	0,06
25/10	33,7	17,2	2,0	50,0	0,07
25/15	33,7	21,3	2,0	37,0	0,05
25/20	33,7	26,9	2,0	20,0	0,03
32/10	42,4	17,2	2,0	75,6	0,15
32/15	42,4	21,3	2,0	63,0	0,12
32/20	42,4	26,9	2,0	46,0	0,08
32/25	42,4	33,7	2,0	26,0	0,05
40/15	48,3	21,3	2,0	81,0	0,16
40/20	48,3	26,9	2,0	64,0	0,12
40/25	48,3	33,7	2,0	44,0	0,09
40/32	48,3	42,4	2,0	18,0	0,04
50/15	60,3	21,3	2,0	117,0	0,27
50/20	60,3	26,9	2,0	100,0	0,22
50/25	60,3	33,7	2,0	80,0	0,19

Reducer eccentric ISO  
for welding  
AISI 304/L, AISI 316/L

179I

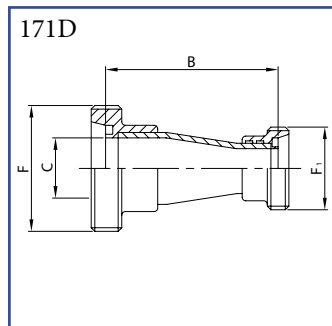


DN	D1	D2	S	L	kg
50/32	60,3	42,4	2,0	54,0	0,14
50/40	60,3	48,3	2,0	36,0	0,10
65/25	76,1	33,7	2,0	127,0	0,35
65/32	76,1	42,4	2,0	101,0	0,30
65/40	76,1	48,3	2,0	83,0	0,26
65/50	76,1	60,3	2,0	47,0	0,16
80/25	88,9	33,7	2,0	166,0	0,51
80/32	88,9	42,4	2,0	139,0	0,46
80/40	88,9	48,3	2,0	122,0	0,43
80/50	88,9	60,3	2,0	86,0	0,52
80/65	88,9	76,1	2,0	38,0	0,16
100/25	114,3	33,7	2,0	242,0	0,92
100/32	114,3	42,4	2,0	216,0	0,86
100/40	114,3	48,3	2,0	198,0	0,82
100/50	114,3	60,3	2,0	162,0	0,72
100/65	114,3	76,1	2,0	115,0	0,55
100/80	114,3	88,9	2,0	76,0	0,39

DN	D1	D2	S	L	kg
15/10	21,3	17,2	2,0	12,0	0,03
20/10	26,9	17,2	2,0	29,0	0,06
20/15	26,9	21,3	2,0	17,0	0,06
25/10	33,7	17,2	2,0	50,0	0,07
25/15	33,7	21,3	2,0	37,0	0,05
25/20	33,7	26,9	2,0	20,0	0,03
32/10	42,4	17,2	2,0	75,6	0,15
32/15	42,4	21,3	2,0	63,0	0,12
32/20	42,4	26,9	2,0	46,0	0,08
32/25	42,4	33,7	2,0	26,0	0,05
40/15	48,3	21,3	2,0	81,0	0,16
40/20	48,3	26,9	2,0	64,0	0,12
40/25	48,3	33,7	2,0	44,0	0,09
40/32	48,3	42,4	2,0	18,0	0,04
50/15	60,3	21,3	2,0	117,0	0,27
50/20	60,3	26,9	2,0	100,0	0,22
50/25	60,3	33,7	2,0	80,0	0,19

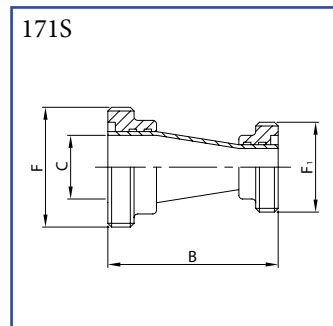
DN	D1	D2	S	L	kg
50/32	60,3	42,4	2,0	54,0	0,14
50/40	60,3	48,3	2,0	36,0	0,10
65/25	76,1	33,7	2,0	127,0	0,35
65/32	76,1	42,4	2,0	101,0	0,30
65/40	76,1	48,3	2,0	83,0	0,26
65/50	76,1	60,3	2,0	47,0	0,16
80/25	88,9	33,7	2,0	166,0	0,51
80/32	88,9	42,4	2,0	139,0	0,46
80/40	88,9	48,3	2,0	122,0	0,43
80/50	88,9	60,3	2,0	86,0	0,52
80/65	88,9	76,1	2,0	38,0	0,16
100/32	114,3	42,4	2,0	216,0	0,86
100/40	114,3	48,3	2,0	198,0	0,82
100/50	114,3	60,3	2,0	162,0	0,72
100/65	114,3	76,1	2,0	115,0	0,55
100/80	114,3	88,9	2,0	76,0	0,39

Reducer concentric DIN  
with male ends  
AISI 304/L, AISI 316/L



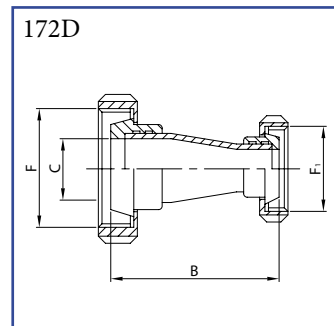
DN	B	C	F	FI	kg
32/25	94,0	31,0	58-6	52-6	0,39
40/25	115,0	37,0	65-6	52-6	0,46
40/32	101,0	37,0	65-6	58-6	0,50
50/25	128,0	49,0	78-6	52-6	0,57
50/32	142,0	49,0	78-6	58-6	0,66
50/40	125,0	49,0	78-6	65-6	0,67
65/40	130,0	66,0	95-6	65-6	0,81
65/50	148,0	66,0	95-6	78-6	0,93
80/65	136,0	81,0	110-4	95-6	1,41
100/80	138,0	100,0	130-4	110-4	2,15

Reducer concentric SMS  
with male ends  
AISI 304/L, AISI 316/L



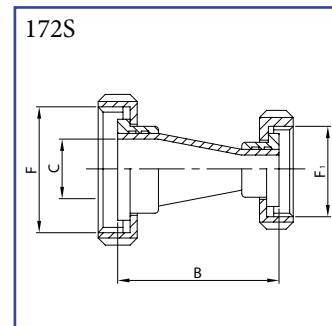
DN	B	C	F	FI	kg
38/25	97,0	35,1	60-6	40-6	0,38
51/25	115,0	47,8	70-6	40-6	0,47
51/38	97,0	47,8	70-6	60-6	0,58
63/38	115,0	60,5	85-6	60-6	0,82
63/51	97,0	60,5	85-6	70-6	0,81
76/38	132,0	72,9	98-6	60-6	1,00
76/51	115,0	72,9	98-6	70-6	0,99
76/63	97,0	72,9	98-6	85-6	1,13
101/63	120,0	97,6	132-6	85-6	2,12
101/76	120,0	97,6	132-6	98-6	2,22

Reducer concentric DIN  
taper parts with nuts  
AISI 304/L, AISI 316/L



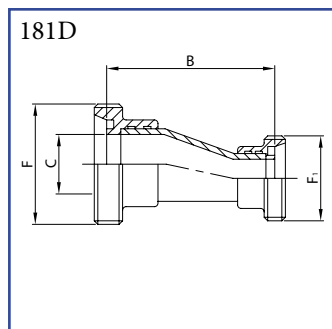
DN	B	C	F	FI	kg
32/25	94,0	31,0	58-6	52-6	0,64
40/25	115,0	37,0	65-6	52-6	0,74
40/32	101,0	37,0	65-6	58-6	0,80
50/25	128,0	49,0	78-6	52-6	0,92
50/32	142,0	49,0	78-6	58-6	1,03
50/40	125,0	49,0	78-6	65-6	1,08
65/40	130,0	66,0	95-6	65-6	1,43
65/50	148,0	66,0	95-6	78-6	1,55
80/65	136,0	81,0	110-4	95-6	2,42
100/80	138,0	100,0	130-4	110-4	3,47

Reducer concentric SMS  
taper parts with nuts  
AISI 304/L, AISI 316/L



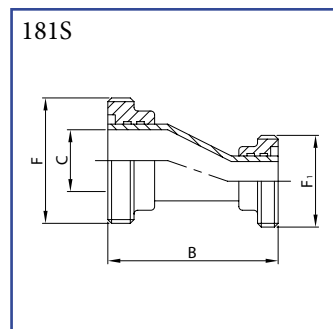
DN	B	C	F	FI	kg
38/25	97,0	35,1	60-6	40-6	0,66
51/25	115,0	47,8	70-6	40-6	0,76
51/38	97,0	47,8	70-6	60-6	0,98
63/38	115,0	60,5	85-6	60-6	1,33
63/51	97,0	60,5	85-6	70-6	1,34
76/38	132,0	72,9	98-6	60-6	1,64
76/51	115,0	72,9	98-6	70-6	1,65
76/63	97,0	72,9	98-6	85-6	1,90
101/63	120,0	97,6	132-6	85-6	3,02
101/76	120,0	97,6	132-6	98-6	3,03

Reducer eccentric DIN  
with male ends  
AISI 304/L, AISI 316/L



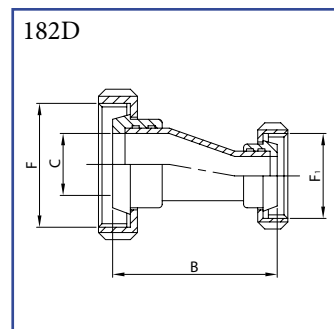
DN	B	C	F	FI	kg
32/25	116,0	31,0	58-6	52-6	0,42
40/25	123,0	37,0	65-6	52-6	0,46
40/32	115,0	37,0	65-6	58-6	0,51
50/25	143,0	49,0	78-6	52-6	0,57
50/32	133,0	49,0	78-6	58-6	0,65
50/40	122,0	49,0	78-6	65-6	0,67
65/40	166,0	66,0	95-6	65-6	0,88
65/50	143,0	66,0	95-6	78-6	0,90
80/65	136,0	81,0	110-4	95-6	1,41
100/80	136,0	100,0	130-4	110-4	2,18

Reducer eccentric SMS  
with male ends  
AISI 304/L, AISI 316/L



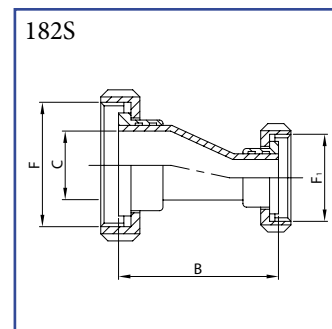
DN	B	C	F	FI	kg
38/25	104,0	35,1	60-6	40-6	0,40
51/25	126,0	47,8	70-6	40-6	0,47
51/38	105,0	47,8	70-6	60-6	0,59
63/38	130,0	60,5	85-6	60-6	0,79
63/51	103,0	60,5	85-6	70-6	0,84
76/38	148,0	72,9	98-6	60-6	1,02
76/51	126,0	72,9	98-6	70-6	1,00
76/63	105,0	72,9	98-6	85-6	1,14
101/63	143,0	97,6	132-6	85-6	2,20
101/76	128,0	97,6	132-6	98-6	2,27

Reducer eccentric DIN  
taper parts with nuts  
AISI 304/L, AISI 316/L



DN	B	C	F	FI	kg
32/25	116,0	31,0	58-6	52-6	0,67
40/25	123,0	37,0	65-6	52-6	0,74
40/32	115,0	37,0	65-6	58-6	0,81
50/25	143,0	49,0	78-6	52-6	0,93
50/32	133,0	49,0	78-6	58-6	1,02
50/40	122,0	49,0	78-6	65-6	1,06
65/40	166,0	66,0	95-6	65-6	1,40
65/50	143,0	66,0	95-6	78-6	1,60
80/65	136,0	81,0	110-4	95-6	2,42
100/80	136,0	100,0	130-4	110-4	3,50

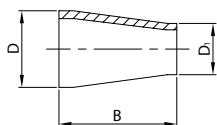
Reducer eccentric SMS  
taper parts with nuts  
AISI 304/L, AISI 316/L



DN	B	C	F	FI	kg
38/25	104,0	35,1	60-6	40-6	0,67
51/25	126,0	47,8	70-6	40-6	0,76
51/38	105,0	47,8	70-6	60-6	0,99
63/38	130,0	60,5	85-6	60-6	1,30
63/51	103,0	60,5	85-6	70-6	1,37
76/38	148,0	72,9	98-6	60-6	1,66
76/51	126,0	72,9	98-6	70-6	1,67
76/63	105,0	72,9	98-6	85-6	1,91
101/63	143,0	97,6	132-6	85-6	3,10
101/76	128,0	97,6	132-6	98-6	3,30

Reducer concentric  
for welding  
AISI 316L LS, AISI 316L LL

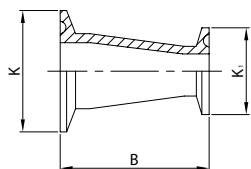
W31



DN	B	D	D1	kg
3/4"-1/2"	19/12	25,4	19,0	12,7 0,05
1"-1/2"	25/12	25,4	25,4	12,7 0,07
1"-3/4"	25/19	25,4	25,4	19,0 0,08
1 1/2"-1/2"	38/12	50,8	38,1	12,7 0,09
1 1/2"-3/4"	38/19	50,8	38,1	19,0 0,09
1 1/2"-1"	38/25	67,0	38,1	25,4 0,10
2"-1 1/2"	51/38	67,0	50,8	38,1 0,14
2 1/2"-2"	63/51	67,0	63,5	50,8 0,16
3"-2"	76/51	67,0	76,2	50,8 0,18
3"-2 1/2"	76/63	67,0	76,2	63,5 0,22
4"-3"	101/76	67,0	101,6	76,2 0,28

Reducer concentric  
with CLAMP ends  
AISI 316L LS, AISI 316L LL

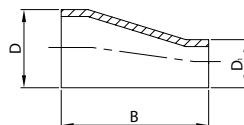
K31



DN	B	K	K1	kg
3/4"-1/2"	19/12	50,8	25,0	25,0 0,08
1"-1/2"	25/12	50,8	50,5	25,0 0,14
1"-3/4"	25/19	50,8	50,5	25,0 0,16
1 1/2"-1/2"	38/12	76,2	50,5	25,0 0,20
1 1/2"-3/4"	38/19	76,2	50,5	25,0 0,20
1 1/2"-1"	38/25	92,4	50,5	50,5 0,24
2"-1 1/2"	51/38	92,4	64,0	50,5 0,25
2 1/2"-2"	63/51	92,4	77,5	64,0 0,30
3"-2"	76/51	92,4	91,0	64,0 0,40
3"-2 1/2"	76/63	92,4	91,0	77,5 0,39
4"-3"	101/76	92,4	119,0	91,0 0,78

Reducer eccentric  
for welding  
AISI 316L LS, AISI 316L LL

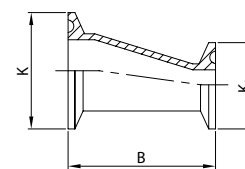
W32



DN	B	D	D1	kg
3/4"-1/2"	19/12	25,4	19,0	12,7 0,05
1"-1/2"	25/12	25,4	25,4	12,7 0,08
1"-3/4"	25/19	25,4	25,4	19,0 0,08
1 1/2"-1"	38/25	67,0	38,1	25,4 0,11
2"-1 1/2"	51/38	67,0	50,8	38,1 0,15
2 1/2"-2"	63/51	67,0	63,5	50,8 0,17
3"-2"	76/51	67,0	76,2	50,8 0,25
3"-2 1/2"	76/63	67,0	76,2	63,5 0,23
4"-3"	101/76	67,0	101,6	76,2 0,51

Reducer eccentric  
with CLAMP ends  
AISI 316L LS, AISI 316L LL

K32



DN	B	K	K1	kg
3/4"-1/2"	19/12	50,8	25,0	25,0 0,08
1"-1/2"	25/12	50,8	50,5	25,0 0,16
1"-3/4"	25/19	50,8	50,5	25,0 0,16
1 1/2"-1"	38/25	92,4	50,5	50,5 0,25
2"-1 1/2"	51/38	92,4	64,0	50,5 0,26
2 1/2"-2"	63/51	92,4	77,5	64,0 0,30
3"-2"	76/51	92,4	91,0	64,0 0,40
3"-2 1/2"	76/63	92,4	91,0	77,5 0,40
4"-3"	101/76	92,4	119,0	91,0 0,79



**On demand:**

other materials, dimensions ...

**Surface:**

type LS: outside polished and inside glazed

type LL: inside and outside polished

for more informations see „Clamp connection“

## Cod. 169

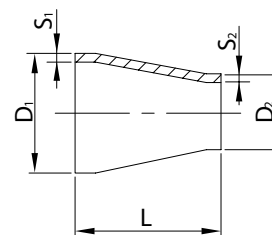
dimensions acc. to: DIN 11852 - DIN 2616 - ASTM A 403 - ISO / L=3(D-d) - SMS

### Materials:

AISI 304	(DIN 1.4301/7)
AISI 316L	(DIN 1.4401/4)
AISI 321	(DIN 1.4541)
AISI 316Ti	(DIN 1.4571)

### Surface:

without adjustment  
 outside surface brushed  
**For selected dimensions (on request):**  
 outside surface polished  
 outside surface polished / inside surface brushed  
 inside surface e-polished Ra 0,25 - 0,8 μm



D1	D2	S1	S2	SCH	kg/pc	L	Type	D1	D2	S1	S2	SCH	kg/pc	L	Type
17,20	13,50	2,00	2,00		0,01	11,0	3(D-d)	33,70	26,90	4,50	4,00		0,16	50,0	2616
18,00	12,00	1,50	1,50		0,01	11,5	169L-1	34,00	12,00	1,50	1,50		0,03	30,0	169L-1
19,00	13,00	1,50	1,50		0,01	11,0	169L-2	34,00	18,00	1,50	1,50		0,03	30,0	169L-1
21,30	13,70	2,00	2,00		0,02	23,0	3(D-d)	34,00	22,00	1,50	1,50		0,06	18,0	169L-1
21,30	17,20	2,00	2,00		0,03	12,0	3(D-d)	34,00	28,00	1,50	1,50		0,06	19,5	169L-1
21,30	17,20	1,60	1,60		0,03	38,0	2616	35,00	19,00	1,50	1,50		0,03	28,0	169L-2
21,30	17,20	2,00	1,80		0,03	38,0	2616	35,00	23,00	1,50	1,50		0,02	22,0	169L-2
21,34	13,72	2,11	1,65	½" x ¼" SCH 10S	0,02	38,1	A-403	35,00	29,00	1,50	1,50		0,02	11,0	169L-2
21,34	13,72	2,77	2,24	½" x ¼" SCH 40S	0,03	38,1	A-403	38,00	20,00	2,00	2,00		0,05	54,0	3(D-d)
21,34	17,15	2,11	1,65	½" x ⅜" SCH 10S	0,02	38,1	A-403	38,00	25,00	2,00	2,00		0,03	39,0	3(D-d)
21,34	17,15	2,77	2,31	½" x ⅜" SCH 40S	0,03	38,1	A-403	38,10	25,40	1,50	1,50		0,08	67,0	SMS
22,00	12,00	1,50	1,50		0,03	15,0	169L-1	40,00	18,00	1,50	1,50		0,04	30,0	169L-1
22,00	18,00	1,50	1,50		0,03	22,0	169L-1	40,00	22,00	1,50	1,50		0,04	30,0	169L-1
23,00	13,00	1,50	1,50		0,02	18,0	169L-2	40,00	28,00	1,50	1,50		0,06	19,0	169L-1
23,00	19,00	1,50	1,50		0,01	7,0	169L-2	40,00	34,00	1,50	1,50		0,06	20,5	169L-1
25,00	20,00	2,00	2,00		0,06	15,0	3(D-d)	41,00	23,00	1,50	1,50		0,04	33,0	169L-2
26,67	21,33	2,11	2,11	¾" x ½" SCH 10S	0,04	38,1	A-403	41,00	29,00	1,50	1,50		0,03	22,0	169L-2
26,67	21,33	2,87	2,77	¾" x ½" SCH 40S	0,06	38,1	A-403	41,00	35,00	1,50	1,50		0,04	11,0	169L-2
26,67	21,33	3,91	3,73	¾" x ½" SCH 80S	0,08	38,1	A-403	42,16	21,30	2,77	2,11	1¼" x ½" SCH 10S	0,10	50,8	A-403
26,90	13,50	2,00	2,00		0,04	40,0	3(D-d)	42,16	21,30	3,56	2,77	1¼" x ½" SCH 40S	0,13	50,8	A-403
26,90	17,20	2,00	2,00		0,06	29,0	3(D-d)	42,16	21,30	4,85	3,73	1¼" x ½" SCH 80S	0,17	50,8	A-403
26,90	21,30	2,00	2,00		0,06	17,0	3(D-d)	42,16	26,67	2,77	2,11	1¼" x ¾" SCH 10S	0,11	50,8	A-403
26,90	21,30	2,00	2,00		0,04	38,0	ISO	42,16	26,67	3,56	2,87	1¼" x ¾" SCH 40S	0,14	50,8	A-403
26,90	17,20	1,60	1,60		0,07	38,0	2616	42,16	26,67	4,85	3,91	1¼" x ¾" SCH 80S	0,19	50,8	A-403
26,90	17,20	2,90	2,30		0,07	38,0	2616	42,16	33,40	2,77	2,77	1¼" x 1" SCH 10S	0,12	50,8	A-403
26,90	21,30	2,30	1,80		0,05	38,0	2616	42,16	33,40	3,56	3,38	1¼" x 1" SCH 40S	0,16	50,8	A-403
26,90	21,30	2,90	2,60		0,07	38,0	2616	42,16	33,40	4,85	4,55	1¼" x 1" SCH 80S	0,21	50,8	A-403
28,00	12,00	1,50	1,50		0,02	25,0	169L-1	48,26	21,30	2,77	2,11	1½" x ½" SCH 10S	0,14	63,5	A-403
28,00	18,00	1,50	1,50		0,05	15,0	169L-1	48,26	21,30	3,68	2,77	1½" x ½" SCH 40S	0,18	63,5	A-403
28,00	22,00	1,50	1,50		0,05	17,0	169L-1	48,26	21,30	5,08	3,73	1½" x ½" SCH 80S	0,24	63,5	A-403
29,00	13,00	1,50	1,50		0,02	28,0	169L-2	42,40	13,50	2,00	2,00		0,21	86,7	3(D-d)
29,00	19,00	1,50	1,50		0,02	18,0	169L-2	42,40	17,20	2,00	2,00		0,15	75,6	3(D-d)
29,00	23,00	1,50	1,50		0,01	11,0	169L-2	42,40	21,30	2,00	2,00		0,12	63,0	3(D-d)
30,00	20,00	2,00	2,00		0,03	30,0	3(D-d)	42,40	26,90	2,00	2,00		0,08	46,0	3(D-d)
30,00	25,00	2,00	2,00		0,02	15,0	3(D-d)	42,40	33,70	2,00	2,00		0,05	26,0	3(D-d)
33,40	21,33	2,77	2,11	1" x ½" SCH 10S	0,09	50,8	A-403	42,40	21,30	2,00	2,00		0,07	51,0	ISO
33,40	21,33	3,38	2,77	1" x ½" SCH 40S	0,11	50,8	A-403	42,40	21,30	2,60	2,60		0,09	51,0	ISO
33,40	21,33	4,55	3,73	1" x ½" SCH 80S	0,13	50,8	A-403	42,40	21,30	2,00	2,00		0,10	50,0	2616
33,40	26,67	2,77	2,11	1" x ¾" SCH 10S	0,10	50,8	A-403	42,40	26,90	2,00	2,00		0,10	50,0	2616
33,40	26,67	3,38	2,87	1" x ¾" SCH 40S	0,12	50,8	A-403	42,40	33,70	2,00	2,00		0,10	50,0	2616
33,40	26,67	4,55	3,91	1" x ¾" SCH 80S	0,15	50,8	A-403	42,40	21,30	2,60	2,00		0,12	50,0	2616
33,70	13,50	2,00	2,00		0,07	60,6	3(D-d)	42,40	26,90	2,60	2,30		0,13	50,0	2616
33,70	17,20	2,00	2,00		0,07	50,0	3(D-d)	42,40	33,70	2,60	2,60		0,13	50,0	2616
33,70	21,30	2,00	2,00		0,05	37,0	3(D-d)	42,40	21,30	3,60	2,90		0,16	50,0	2616
33,70	26,90	2,00	2,00		0,03	20,0	3(D-d)	42,40	26,90	3,60	2,90		0,18	50,0	2616
33,70	21,30	2,00	2,00		0,07	51,0	ISO	42,40	33,70	3,60	3,60		0,18	50,0	2616
33,70	21,30	2,60	2,60		0,08	51,0	ISO	44,50	20,00	2,00	2,00		0,12	72,0	3(D-d)
33,70	26,90	2,00	2,00		0,07	51,0	ISO	44,50	25,00	2,00	2,00		0,09	60,0	3(D-d)
33,70	26,90	2,60	2,60		0,09	51,0	ISO	44,50	30,00	2,00	2,00		0,07	45,0	3(D-d)
33,70	17,20	2,00	2,00		0,08	50,0	2616	48,26	26,67	2,77	2,11	1½" x ¾" SCH 10S	0,15	63,5	A-403
33,70	21,30	2,00	2,00		0,08	50,0	2616	48,26	26,67	3,68	2,87	1½" x ¾" SCH 40S	0,20	63,5	A-403
33,70	26,90	2,00	2,00		0,08	50,0	2616	48,26	26,67	5,08	3,91	1½" x ¾" SCH 80S	0,27	63,5	A-403
33,70	17,20	2,60	2,30		0,10	50,0	2616	48,26	33,40	2,77	2,77	1½" x 1" SCH 10S	0,17	63,5	A-403
33,70	21,30	2,60	2,30		0,10	50,0	2616	48,26	33,40	3,68	3,38	1½" x 1" SCH 40S	0,22	63,5	A-403
33,70	26,90	2,60	2,30		0,10	50,0	2616	48,26	33,40	5,08	4,55	1½" x 1" SCH 80S	0,29	63,5	A-403
33,70	21,30	3,60	2,90		0,13	50,0	2616	48,26	42,16	2,77	2,77	1½" x 1¼" SCH 10S	0,18	63,5	A-403
33,70	26,90	3,60	2,90		0,14	50,0	2616	48,26	42,16	3,68	3,56	1½" x 1¼" SCH 40S	0,24	63,5	A-403
33,70	21,30	4,50	4,00		0,16	50,0	2616	48,26	42,16	5,08	4,85	1½" x 1¼" SCH 80S	0,32	63,5	A-403

## Cod. 169

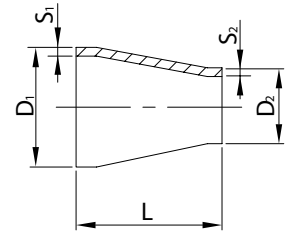
dimensions acc. to: DIN 11852 - DIN 2616 - ASTM A 403 - ISO / L=3(D-d) - SMS

**Materials:**

AISI 304 (DIN 1.4301/7)  
 AISI 316L (DIN 1.4401/4)  
 AISI 321 (DIN 1.4541)  
 AISI 316Ti (DIN 1.4571)

**Surface:**

without adjustment  
 outside surface brushed  
**For selected dimensions (on request):**  
 outside surface polished  
 outside surface polished / inside surface brushed  
 inside surface e-polished Ra 0,25 - 0,8 μm



D1	D2	S1	S2	SCH	kg/pc	L	Type	D1	D2	S1	S2	SCH	kg/pc	L	Type
48,30	21,30	2,00	2,00		0,16	81,0	3(D-d)	60,33	48,26	3,91	3,68	2" x 1 1/2" SCH 40S	0,37	76,1	A-403
48,30	26,90	2,00	2,00		0,12	64,0	3(D-d)	60,33	48,26	5,54	5,08	2" x 1 1/2" SCH 80S	0,51	76,1	A-403
48,30	33,70	2,00	2,00		0,09	44,0	3(D-d)	63,50	38,10	1,65	1,50		0,14	67,0	SMS
48,30	42,40	2,00	2,00		0,04	18,0	3(D-d)	63,50	50,80	1,65	1,50		0,16	67,0	SMS
48,30	21,30	2,00	2,00		0,15	64,0	2616	70,00	35,00	2,00	1,50		0,12	62,0	169L-2
48,30	26,90	2,00	2,00		0,15	64,0	2616	70,00	40,00	2,00	1,50		0,10	38,0	169L-1
48,30	33,70	2,00	2,00		0,15	64,0	2616	70,00	41,00	2,00	1,50		0,09	51,0	169L-2
48,30	42,40	2,00	2,00		0,15	64,0	2616	70,00	44,50	2,00	2,00		0,20	75,0	3(D-d)
48,30	21,30	2,60	2,30		0,17	64,0	2616	70,00	52,00	2,00	1,50		0,10	29,0	169L-1
48,30	26,90	2,60	2,60		0,18	64,0	2616	70,00	53,00	2,00	1,50		0,09	29,0	169L-2
48,30	33,70	2,60	2,60		0,18	64,0	2616	70,00	54,00	2,00	2,00		0,13	45,0	3(D-d)
48,30	42,40	2,60	2,60		0,18	64,0	2616	73,03	42,16	3,05	2,77	2 1/2" x 1 1/4" SCH 10S	0,37	88,9	A-403
48,30	26,90	3,60	2,90		0,26	64,0	2616	73,03	42,16	5,16	3,56	2 1/2" x 1 1/4" SCH 40S	0,63	88,9	A-403
48,30	33,70	3,60	3,60		0,27	64,0	2616	73,03	42,16	7,01	4,85	2 1/2" x 1 1/4" SCH 80S	0,79	88,9	A-403
48,30	42,40	3,60	3,60		0,27	64,0	2616	73,03	48,30	3,05	2,77	2 1/2" x 1 1/2" SCH 10S	0,39	88,9	A-403
48,30	26,90	5,10	4,00		0,33	64,0	2616	73,03	48,30	5,16	3,68	2 1/2" x 1 1/2" SCH 40S	0,66	88,9	A-403
48,30	33,70	5,10	4,50		0,34	64,0	2616	73,03	48,30	7,01	5,08	2 1/2" x 1 1/2" SCH 80S	0,83	88,9	A-403
50,80	25,40	1,50	1,50		0,10	67,0	SMS	73,03	60,30	3,05	2,77	2 1/2" x 2" SCH 10S	0,43	88,9	A-403
50,80	38,10	1,50	1,50		0,10	67,0	SMS	73,03	60,30	5,16	3,91	2 1/2" x 2" SCH 40S	0,72	88,9	A-403
52,00	28,00	1,50	1,50		0,08	71,0	169L-1	73,03	60,30	7,01	5,54	2 1/2" x 2" SCH 80S	0,92	88,9	A-403
52,00	34,00	1,50	1,50		0,07	26,5	169L-1	76,10	33,70	2,00	2,00		0,35	127,0	3(D-d)
52,00	40,00	1,50	1,50		0,07	28,5	169L-1	76,10	42,40	2,00	2,00		0,30	101,0	3(D-d)
53,00	29,00	1,50	1,50		0,08	44,0	169L-2	76,10	48,30	2,00	2,00		0,26	83,0	3(D-d)
53,00	35,00	1,50	1,50		0,08	33,0	169L-2	76,10	60,30	2,00	2,00		0,16	47,0	3(D-d)
53,00	41,00	1,50	1,50		0,09	22,0	169L-2	76,10	60,30	3,00	3,00		0,25	47,0	3(D-d)
54,00	30,00	2,00	2,00		0,14	75,0	3(D-d)	76,10	33,70	2,30	2,00		0,36	90,0	2616
54,00	44,50	2,00	2,00		0,07	30,0	3(D-d)	76,10	42,40	2,30	2,00		0,36	90,0	2616
60,30	21,30	2,00	2,00		0,27	117,0	3(D-d)	76,10	48,30	2,30	2,00		0,39	90,0	2616
60,30	26,90	2,00	2,00		0,22	100,0	3(D-d)	76,10	60,30	2,30	2,00		0,39	90,0	2616
60,30	33,70	2,00	2,00		0,19	80,0	3(D-d)	76,10	33,70	2,90	2,60		0,46	90,0	2616
60,30	42,40	2,00	2,00		0,14	54,0	3(D-d)	76,10	42,40	2,90	2,60		0,46	90,0	2616
60,30	48,30	2,00	2,00		0,10	36,0	3(D-d)	76,10	48,30	2,90	2,60		0,47	90,0	2616
60,30	26,90	2,00	2,00		0,21	76,0	2616	76,10	60,30	2,90	2,60		0,47	90,0	2616
60,30	33,70	2,00	2,00		0,21	76,0	2616	76,10	42,40	5,60	3,60		0,80	90,0	2616
60,30	42,40	2,00	2,00		0,23	76,0	2616	76,10	48,30	5,60	3,60		0,84	90,0	2616
60,30	48,30	2,00	2,00		0,23	76,0	2616	76,10	60,30	5,60	4,00		0,84	90,0	2616
60,30	26,90	2,90	2,30		0,26	76,0	2616	76,10	38,10	1,65	1,50		0,16	67,0	SMS
60,30	33,70	2,90	2,60		0,29	76,0	2616	76,10	50,80	1,65	1,50		0,18	67,0	SMS
60,30	42,40	2,90	2,60		0,29	76,0	2616	76,10	63,50	1,65	1,65		0,22	67,0	SMS
60,30	48,30	2,90	2,60		0,30	76,0	2616	84,00	44,50	2,00	2,00		0,36	120,0	3(D-d)
60,30	33,70	4,00	3,60		0,41	76,0	2616	84,00	54,00	2,00	2,00		0,30	90,0	3(D-d)
60,30	42,40	4,00	3,60		0,45	76,0	2616	84,00	70,00	2,00	2,00		0,17	45,0	3(D-d)
60,30	48,30	4,00	3,60		0,47	76,0	2616	85,00	40,00	2,00	1,50		0,16	92,0	169L-1
60,30	33,70	5,60	4,50		0,54	76,0	2616	85,00	41,00	2,00	1,50		0,16	92,0	169L-2
60,30	48,30	5,60	5,10		0,57	76,0	2616	85,00	52,00	2,00	1,50		0,11	46,0	169L-1
60,33	21,30	2,77	2,11	2" x 1/2" SCH 10S	0,23	76,1	A-403	85,00	53,00	2,00	1,50		0,12	56,0	169L-2
60,33	21,30	3,91	2,77	2" x 1/2" SCH 40S	0,28	76,1	A-403	85,00	70,00	2,00	2,00		0,11	34,5	169L-1
60,33	21,30	5,54	3,73	2" x 1/2" SCH 80S	0,38	76,1	A-403	88,90	33,70	2,00	2,00		0,51	166,0	3(D-d)
60,33	26,67	2,77	2,11	2" x 3/4" SCH 10S	0,22	76,1	A-403	88,90	42,40	2,00	2,00		0,46	139,0	3(D-d)
60,33	26,67	3,91	2,87	2" x 3/4" SCH 40S	0,30	76,1	A-403	88,90	48,30	2,00	2,00		0,43	122,0	3(D-d)
60,33	26,67	5,54	3,91	2" x 3/4" SCH 80S	0,41	76,1	A-403	88,90	60,30	2,00	2,00		0,52	86,0	3(D-d)
60,33	33,40	2,77	2,77	2" x 1" SCH 10S	0,23	76,1	A-403	88,90	60,30	3,00	3,00		0,48	86,0	3(D-d)
60,33	33,40	3,91	3,38	2" x 1" SCH 40S	0,32	76,1	A-403	88,90	76,10	2,00	2,00		0,16	38,0	3(D-d)
60,33	33,40	5,54	4,55	2" x 1" SCH 80S	0,44	76,1	A-403	88,90	76,10	3,00	3,00		0,24	38,0	3(D-d)
60,33	42,16	2,77	2,77	2" x 1 1/4" SCH 10S	0,25	76,1	A-403	88,90	33,70	2,60	2,00		0,46	90,0	2616
60,33	42,16	3,91	3,56	2" x 1 1/4" SCH 40S	0,35	76,1	A-403	88,90	42,40	2,60	2,00		0,46	90,0	2616
60,33	42,16	5,54	4,85	2" x 1 1/4" SCH 80S	0,48	76,1	A-403	88,90	48,30	2,60	2,00		0,46	90,0	2616
60,33	48,26	2,77	2,77	2" x 1 1/2" SCH 10S	0,27	76,1	A-403	88,90	60,30	2,60	2,00		0,49	90,0	2616



## Cod. 169

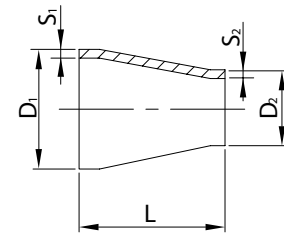
dimensions acc. to: DIN 11852 - DIN 2616 - ASTM A 403 - ISO / L=3(D-d) - SMS

**Materials:**

AISI 304 (DIN 1.4301/7)  
 AISI 316L (DIN 1.4401/4)  
 AISI 321 (DIN 1.4541)  
 AISI 316Ti (DIN 1.4571)

**Surface:**

without adjustment  
 outside surface brushed  
**For selected dimensions (on request):**  
 outside surface polished  
 outside surface polished / inside surface brushed  
 inside surface e-polished Ra 0,25 - 0,8 µm



D1	D2	S1	S2	SCH	kg/pc	L	Type	D1	D2	S1	S2	SCH	kg/pc	L	Type
88,90	76,10	2,60	2,30		0,49	90,0	2616	114,30	60,30	8,80	5,60		2,40	100,0	2616
88,90	33,70	3,20	2,60		0,58	90,0	2616	114,30	42,26	3,05	2,77	4" x 1½" SCH 10S	0,63	101,6	A-403
88,90	42,40	3,20	2,60		0,58	90,0	2616	114,30	42,26	6,02	3,68	4" x 1½" SCH 40S	1,18	101,6	A-403
88,90	48,30	3,20	2,60		0,58	90,0	2616	114,30	42,26	8,56	5,08	4" x 1½" SCH 80S	1,64	101,6	A-403
88,90	60,30	3,20	2,90		0,60	90,0	2616	114,30	60,30	3,05	2,77	4" x 2" SCH 10S	0,67	101,6	A-403
88,90	76,10	3,20	2,90		0,60	90,0	2616	114,30	60,30	6,02	3,91	4" x 2" SCH 40S	1,27	101,6	A-403
88,90	48,30	5,60	3,60		1,00	90,0	2616	114,30	60,30	8,56	5,54	4" x 2" SCH 80S	1,76	101,6	A-403
88,90	60,30	5,60	4,00		1,06	90,0	2616	114,30	73,03	3,05	3,05	4" x 2½" SCH 10S	0,71	101,6	A-403
88,90	76,10	5,60	5,60		1,06	90,0	2616	114,30	73,03	6,02	5,16	4" x 2½" SCH 40S	1,37	101,6	A-403
88,90	60,30	8,00	5,60		1,30	90,0	2616	114,30	73,03	8,56	7,01	4" x 2½" SCH 80S	1,86	101,6	A-403
88,90	76,10	8,00	7,10		1,30	90,0	2616	114,30	88,90	3,05	3,05	4" x 3" SCH 10S	0,76	101,6	A-403
88,90	33,40	3,05	2,77	3" x 1" SCH 10S	0,43	88,9	A-403	114,30	88,90	6,02	5,49	4" x 3" SCH 40S	1,45	101,6	A-403
88,90	33,40	5,49	3,38	3" x 1" SCH 40S	0,74	88,9	A-403	114,30	88,90	8,56	7,62	4" x 3" SCH 80S	2,02	101,6	A-403
88,90	33,40	7,62	4,55	3" x 1" SCH 80S	0,83	88,9	A-403	129,00	70,00	2,00	2,00		0,44	106,0	169L-1
88,90	42,16	3,05	2,77	3" x 1½" SCH 10S	0,43	88,9	A-403	129,00	76,00	2,00	2,00		0,87	180,0	3(D-d)
88,90	42,16	5,49	3,56	3" x 1½" SCH 40S	0,75	88,9	A-403	129,00	76,10	2,00	2,00		0,79	159,0	3(D-d)
88,90	42,16	7,62	4,85	3" x 1½" SCH 80S	0,96	88,9	A-403	129,00	84,00	2,00	2,00		0,70	135,0	3(D-d)
88,90	48,26	3,05	2,77	3" x 1½" SCH 10S	0,45	88,9	A-403	129,00	85,00	2,00	2,00		0,41	79,0	169L-1
88,90	48,26	5,49	3,68	3" x 1½" SCH 40S	0,78	88,9	A-403	129,00	104,00	2,00	2,00		0,55	45,0	169L-1
88,90	48,26	7,62	5,08	3" x 1½" SCH 80S	1,04	88,9	A-403	129,00	104,00	2,00	2,00		0,43	75,0	3(D-d)
88,90	60,30	3,05	2,77	3" x 2" SCH 10S	0,48	88,9	A-403	139,70	48,30	2,00	2,00		1,31	274,0	3(D-d)
88,90	60,30	5,49	3,91	3" x 2" SCH 40S	0,85	88,9	A-403	139,70	60,30	2,00	2,00		1,21	238,0	3(D-d)
88,90	60,30	7,62	5,54	3" x 2" SCH 80S	1,13	88,9	A-403	139,70	60,30	3,00	3,00		1,81	238,0	3(D-d)
88,90	73,03	3,05	3,05	3" x 2½" SCH 10S	0,52	88,9	A-403	139,70	76,10	2,00	2,00		1,04	191,0	3(D-d)
88,90	73,03	5,49	5,16	3" x 2½" SCH 40S	0,93	88,9	A-403	139,70	76,10	3,00	3,00		1,56	191,0	3(D-d)
88,90	73,03	7,62	7,01	3" x 2½" SCH 80S	1,23	88,9	A-403	139,70	88,90	2,00	2,00		0,88	152,0	3(D-d)
101,60	50,80	2,00	1,50		0,31	107,0	SMS	139,70	88,90	3,00	3,00		1,32	152,0	3(D-d)
101,60	63,50	2,00	1,65		0,30	82,0	SMS	139,70	114,30	2,00	2,00		0,49	76,0	3(D-d)
101,60	76,10	2,00	1,65		0,28	67,0	SMS	139,70	114,30	3,00	3,00		0,74	76,0	3(D-d)
104,00	53,00	2,00	1,50		0,29	90,0	169L-2	139,70	60,30	2,60	2,00		1,20	127,0	2616
104,00	54,00	2,00	2,00		0,57	150,0	3(D-d)	139,70	76,10	2,60	2,30		1,20	127,0	2616
104,00	70,00	2,00	2,00		0,28	44,5	169L-1	139,70	88,90	2,60	2,30		1,25	127,0	2616
104,00	70,00	2,00	2,00		0,44	105,0	3(D-d)	139,70	114,30	2,60	2,60		1,25	127,0	2616
104,00	76,10	2,00	2,00		0,35	84,0	3(D-d)	139,70	60,30	4,00	2,90		1,60	127,0	2616
104,00	84,00	2,00	2,00		0,27	60,0	3(D-d)	139,70	76,10	4,00	2,90		1,60	127,0	2616
104,00	85,00	2,00	2,00		0,17	45,0	169L-1	139,70	88,90	4,00	3,20		1,68	127,0	2616
114,30	33,70	2,00	2,00		0,92	242,0	3(D-d)	139,70	114,30	4,00	2,60		1,70	127,0	2616
114,30	42,40	2,00	2,00		0,86	216,0	3(D-d)	141,30	73,05	3,40	3,05	5" x 2½" SCH 10S	1,14	127,0	A-403
114,30	48,30	2,00	2,00		0,82	198,0	3(D-d)	141,30	73,05	6,55	5,16	5" x 2½" SCH 40S	2,16	127,0	A-403
114,30	60,30	2,00	2,00		0,72	162,0	3(D-d)	141,30	88,90	3,40	3,05	5" x 3" SCH 10S	1,22	127,0	A-403
114,30	60,30	3,00	3,00		1,07	162,0	3(D-d)	141,30	88,90	6,55	5,49	5" x 3" SCH 40S	2,27	127,0	A-403
114,30	76,10	2,00	2,00		0,55	115,0	3(D-d)	141,30	114,30	3,40	3,05	5" x 4" SCH 10S	1,33	127,0	A-403
114,30	76,10	3,00	3,00		0,83	115,0	3(D-d)	141,30	114,30	6,55	6,02	5" x 4" SCH 40S	2,50	127,0	A-403
114,30	88,90	2,00	2,00		0,39	76,0	3(D-d)	154,00	84,00	2,00	2,00		1,22	210,0	3(D-d)
114,30	88,90	3,00	3,00		0,59	76,0	3(D-d)	154,00	85,00	2,00	2,00		0,50	124,0	169L-1
114,30	48,30	2,60	2,00		0,76	100,0	2616	154,00	104,00	2,00	2,00		0,45	90,0	169L-1
114,30	60,30	2,60	2,00		0,76	100,0	2616	154,00	104,00	2,00	2,00		0,95	150,0	3(D-d)
114,30	76,10	2,60	2,30		0,78	100,0	2616	154,00	129,00	2,00	2,00		0,40	45,0	169L-1
114,30	88,90	2,60	2,30		0,78	100,0	2616	154,00	129,00	2,00	2,00		0,52	75,0	3(D-d)
114,30	48,30	3,60	2,60		0,85	100,0	2616	168,30	60,30	2,00	2,00		1,88	324,0	3(D-d)
114,30	60,30	3,60	2,90		0,88	100,0	2616	168,30	60,30	3,00	3,00		2,81	324,0	3(D-d)
114,30	76,10	3,60	2,90		0,91	100,0	2616	168,30	76,10	2,00	2,00		1,71	277,0	3(D-d)
114,30	88,90	3,60	3,20		0,94	100,0	2616	168,30	76,10	3,00	3,00		1,56	277,0	3(D-d)
114,30	48,30	6,30	3,60		1,70	100,0	2616	168,30	88,90	2,00	2,00		1,55	238,0	3(D-d)
114,30	60,30	6,30	4,00		1,70	100,0	2616	168,30	88,90	3,00	3,00		1,94	238,0	3(D-d)
114,30	60,30	6,30	5,60		1,70	100,0	2616	168,30	114,30	2,00	2,00		1,16	162,0	3(D-d)
114,30	76,10	6,30	5,60		1,76	100,0	2616	168,30	114,30	3,00	3,00		1,74	162,0	3(D-d)
114,30	88,90	6,30	5,60		1,80	100,0	2616	168,30	139,70	2,00	2,00		0,67	86,0	3(D-d)

## Cod. 169

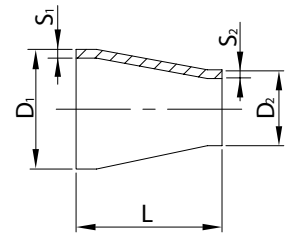
dimensions acc. to: DIN 11852 - DIN 2616 - ASTM A 403 - ISO / L=3(D-d) - SMS

### Materials:

AISI 304	(DIN 1.4301/7)
AISI 316L	(DIN 1.4401/4)
AISI 321	(DIN 1.4541)
AISI 316Ti	(DIN 1.4571)

### Surface:

without adjustment  
 outside surface brushed  
**For selected dimensions (on request):**  
 outside surface polished  
 outside surface polished / inside surface brushed  
 inside surface e-polished Ra 0,25 - 0,8 μm



D1	D2	S1	S2	SCH	kg/pc	L	Type	D1	D2	S1	S2	SCH	kg/pc	L	Type
168,30	139,70	3,00	3,00		1,00	86,0	3(D-d)	273,00	139,70	2,90	2,60		3,80	178,0	2616
168,30	76,10	2,60	2,30		2,20	140,0	2616	273,00	168,30	2,90	2,60		4,00	178,0	2616
168,30	88,90	2,60	2,30		2,20	140,0	2616	273,00	219,10	2,90	2,90		4,00	178,0	2616
168,30	114,30	2,60	2,60		2,30	140,0	2616	273,00	114,30	5,00	3,60		5,10	178,0	2616
168,30	139,70	2,60	2,60		2,30	140,0	2616	273,00	139,70	5,00	4,00		5,10	178,0	2616
168,30	76,10	4,00	2,90		2,50	140,0	2616	273,00	168,30	5,00	4,00		5,10	178,0	2616
168,30	88,90	4,00	3,20		2,50	140,0	2616	273,00	219,10	5,00	4,50		5,10	178,0	2616
168,30	114,30	4,00	3,60		2,65	140,0	2616	273,05	168,28	4,19	3,40	10" x 6" SCH 10S	4,14	179,0	A-403
168,30	139,70	4,00	4,00		2,65	140,0	2616	273,05	168,28	9,27	7,11	10" x 6" SCH 40S	8,78	179,0	A-403
168,30	76,10	4,50	2,90		2,80	140,0	2616	273,05	219,08	4,19	3,76	10" x 8" SCH 10S	4,49	179,0	A-403
168,30	88,90	4,50	3,20		2,80	140,0	2616	273,05	219,08	9,27	8,18	10" x 8" SCH 40S	9,58	179,0	A-403
168,30	114,30	4,50	3,60		2,86	140,0	2616	304,00	204,00	2,00	2,00		5,13	300,0	3(D-d)
168,30	139,70	4,50	4,00		2,86	140,0	2616	304,00	254,00	2,00	2,00		3,80	150,0	3(D-d)
168,30	88,90	7,10	5,60		3,80	140,0	2616	306,00	206,00	3,00	3,00		5,70	300,0	3(D-d)
168,30	114,30	7,10	6,30		3,80	140,0	2616	306,00	256,00	3,00	3,00		3,14	150,0	3(D-d)
168,30	139,70	7,10	7,10		3,85	140,0	2616	323,90	219,10	3,00	3,00		6,49	314,0	3(D-d)
168,28	114,30	3,40	3,05	6" x 4" SCH 10S	1,65	140,0	A-403	323,90	273,00	3,00	3,00		3,46	152,0	3(D-d)
168,28	114,30	8,18	6,02	6" x 4" SCH 40S	3,30	140,0	A-403	323,85	168,28	4,57	3,40	12" x 6" SCH 10S	5,92	203,0	A-403
168,28	114,30	10,97	8,56	6" x 4" SCH 80S	4,96	140,0	A-403	323,85	168,28	9,53	7,11	12" x 6" SCH 40S	11,80	203,0	A-403
168,28	141,30	3,40	3,40	6" x 5" SCH 10S	1,78	140,0	A-403	323,85	219,08	4,57	3,76	12" x 8" SCH 10S	6,31	203,0	A-403
168,28	141,30	8,18	7,11	6" x 5" SCH 40S	3,57	140,0	A-403	323,85	219,08	9,53	8,18	12" x 8" SCH 40S	12,70	203,0	A-403
204,00	104,00	2,00	2,00		2,28	300,0	3(D-d)	323,85	273,05	4,57	4,19	12" x 10" SCH 10S	6,78	203,0	A-403
204,00	129,00	2,00	2,00		1,85	225,0	3(D-d)	323,85	273,05	9,53	9,57	12" x 10" SCH 40S	13,60	203,0	A-403
204,00	154,00	2,00	2,00		0,79	90,0	169L-1	323,90	139,70	2,60	4,20			203,0	2616
204,00	154,00	2,00	2,00		1,33	150,0	3(D-d)	323,90	168,30	2,60	4,20			203,0	2616
206,00	156,00	3,00	3,00		2,00	150,0	3(D-d)	323,90	219,10	2,90	4,40			203,0	2616
219,10	114,30	2,00	2,00		2,66	314,0	3(D-d)	323,90	273,00	2,90	4,40			203,0	2616
219,10	114,30	3,00	3,00		3,98	314,0	3(D-d)	323,90	139,70	4,00	5,90			203,0	2616
219,10	139,70	2,00	2,00		2,17	238,0	3(D-d)	323,90	168,30	4,00	5,90			203,0	2616
219,10	139,70	3,00	3,00		3,25	238,0	3(D-d)	323,90	219,10	4,50	6,30			203,0	2616
219,10	168,30	2,00	2,00		1,50	152,0	3(D-d)	323,90	273,00	5,00	6,30			203,0	2616
219,10	168,30	3,00	3,00		2,24	152,0	3(D-d)	355,60	273,05	4,78	4,19	14" x 10" SCH 10S	12,10	330,2	A-403
219,10	88,90	2,90	2,30		2,40	152,0	2616	355,60	273,05	9,53	9,27	14" x 10" SCH 40S	23,60	330,2	A-403
219,10	114,30	2,90	2,60		2,40	152,0	2616	355,60	323,85	4,78	4,57	14" x 12" SCH 10S	13,00	330,2	A-403
219,10	139,70	2,90	2,60		2,60	152,0	2616	355,60	323,85	9,53	9,53	14" x 12" SCH 40S	25,40	330,2	A-403
219,10	168,30	2,90	2,60		2,60	152,0	2616	356,00	256,00	3,00	3,00		6,84	350,0	3(D-d)
219,10	88,90	4,50	3,20		3,90	152,0	2616	356,00	306,00	3,00	3,00		3,71	350,0	3(D-d)
219,10	114,30	4,50	3,60		3,90	152,0	2616	406,00	306,00	3,00	3,00		7,98	400,0	3(D-d)
219,10	139,70	4,50	4,00		4,20	152,0	2616	406,00	356,00	3,00	3,00		4,28	400,0	3(D-d)
219,10	168,30	4,50	4,00		4,20	152,0	2616	406,40	323,85	4,78	4,57	16" x 12" SCH 10S	15,20	355,6	A-403
219,10	88,90	6,30	3,20		6,00	152,0	2616	406,40	323,85	9,53	9,53	16" x 12" SCH 40S	29,60	355,6	A-403
219,10	114,30	6,30	3,60		6,30	152,0	2616	406,40	355,60	4,78	4,78	16" x 14" SCH 10S	15,80	355,6	A-403
219,10	139,70	6,30	4,00		6,40	152,0	2616	406,40	355,60	9,53	9,53	16" x 14" SCH 40S	31,00	355,6	A-403
219,10	168,30	6,30	5,00		6,50	152,0	2616	456,00	356,00	3,00	3,00		9,12	450,0	3(D-d)
219,10	114,30	8,00	6,30		8,00	152,0	2616	456,00	406,00	3,00	3,00		4,81	450,0	3(D-d)
219,10	139,70	8,00	7,10		8,10	152,0	2616	457,20	355,60	4,78	4,78	18" x 14" SCH 10S	18,20	381,0	A-403
219,10	168,30	8,00	7,10		8,20	152,0	2616	457,20	406,40	9,53	9,53	18" x 14" SCH 40S	35,70	381,0	A-403
219,08	114,30	3,76	3,05	8" x 4" SCH 10S	2,43	152,0	A-403	457,20	355,60	4,78	4,78	18" x 16" SCH 10S	19,20	381,0	A-403
219,08	114,30	8,18	6,02	8" x 4" SCH 40S	5,10	152,0	A-403	457,20	406,40	9,53	9,53	18" x 16" SCH 40S	37,80	381,0	A-403
219,08	168,30	3,76	3,40	8" x 6" SCH 10S	2,72	152,0	A-403	506,00	306,00	3,00	3,00		18,20	500,0	3(D-d)
219,08	168,30	8,18	7,11	8" x 6" SCH 40S	5,71	152,0	A-403	506,00	406,00	3,00	3,00		10,30	500,0	3(D-d)
254,00	154,00	2,00	2,00		3,56	300,0	3(D-d)	508,00	406,40	5,54	4,78	20" x 16" SCH 10S	31,70	508,0	A-403
254,00	204,00	2,00	2,00		3,04	150,0	3(D-d)	508,00	457,20	9,53	9,53	20" x 16" SCH 40S	53,50	508,0	A-403
256,00	156,00	3,00	3,00		4,56	300,0	3(D-d)	508,00	406,40	5,54	4,78	20" x 18" SCH 10S	33,10	508,0	A-403
256,00	206,00	3,00	3,00		2,57	150,0	3(D-d)	508,00	457,20	9,53	9,53	20" x 18" SCH 40S	56,40	508,0	A-403
273,00	168,30	3,00	3,00		5,27	314,0	3(D-d)								
273,00	219,10	3,00	3,00		3,02	162,0	3(D-d)								
273,00	114,30	2,90	2,60		3,80	178,0	2616								

## Cod. 179

dimensions acc. to: DIN 11852 - DIN 2616 - ASTM A 403 - ISO / L=3(D-d) - SMS

### Materials:

AISI 304	(DIN 1.4301/7)
AISI 316L	(DIN 1.4401/4)
AISI 321	(DIN 1.4541)
AISI 316Ti	(DIN 1.4571)

### Surface:

without adjustment  
 outside surface brushed  
**For selected dimensions (on request):**  
 outside surface polished  
 outside surface polished / inside surface brushed  
 inside surface e-polished Ra 0,25 - 0,8 µm

D1	D2	S1	S2	SCH	kg/pc	L	Type	D1	D2	S1	S2	SCH	kg/pc	L	Type
18,00	12,00	1,50	1,50		0,01	25,0	169L-1	41,00	23,00	1,50	1,50		0,04	49,5	179L-2
19,00	13,00	1,50	1,50		0,01	16,5	179L-2	41,00	29,00	1,50	1,50		0,05	33,0	179L-2
21,30	13,70	2,00	2,00		0,02	23,0	3(D-d)	41,00	35,00	1,50	1,50		0,07	16,5	179L-2
21,30	17,20	2,00	2,00		0,03	12,0	3(D-d)	42,16	33,40	2,77	2,77	1 1/4" x 1" SCH 10S	0,12	50,8	A-403
22,00	12,00	1,50	1,50		0,02	30,0	169L-1	42,16	33,40	3,56	3,38	1 1/4" x 1" SCH 40S	0,16	50,8	A-403
23,00	13,00	1,50	1,50		0,02	27,5	179L-2	42,16	33,40	4,85	4,55	1 1/4" x 1" SCH 80S	0,21	50,8	A-403
23,00	19,00	1,50	1,50		0,01	11,0	179L-2	42,40	17,20	2,00	2,00		0,05	75,6	3(D-d)
26,67	21,33	2,11	2,11	3/4" x 1/2" SCH 10S	0,04	38,1	A-403	42,40	21,30	2,00	2,00		0,12	63,0	3(D-d)
26,67	21,33	2,87	2,77	3/4" x 1/2" SCH 40S	0,06	38,1	A-403	42,40	26,90	2,00	2,00		0,08	46,0	3(D-d)
26,67	21,33	3,91	3,73	3/4" x 1/2" SCH 80S	0,08	38,1	A-403	42,40	33,70	2,00	2,00		0,05	26,0	3(D-d)
26,90	13,50	2,00	2,00		0,04	40,0	3(D-d)	42,40	21,30	2,00	2,00		0,10	50,0	2616
26,90	17,20	2,00	2,00		0,06	29,0	3(D-d)	42,40	26,90	2,00	2,00		0,10	50,0	2616
26,90	21,30	2,00	2,00		0,06	17,0	3(D-d)	42,40	33,70	2,00	2,00		0,10	50,0	2616
26,90	17,20	2,00	2,00		0,05	38,0	2616	42,40	21,30	2,60	2,00		0,12	50,0	2616
26,90	21,30	2,00	1,80		0,05	38,0	2616	42,40	26,90	2,60	2,30		0,13	50,0	2616
26,90	17,20	2,90	2,30		0,07	38,0	2616	42,40	33,70	2,60	2,60		0,13	50,0	2616
26,90	21,30	2,90	2,60		0,07	38,0	2616	42,40	21,30	3,60	2,90		0,18	50,0	2616
28,00	12,00	1,50	1,50		0,02	35,0	179L-1	42,40	26,90	3,60	2,90		0,18	50,0	2616
28,00	18,00	1,50	1,50		0,02	30,0	179L-1	42,40	33,70	3,60	3,60		0,18	50,0	2616
28,00	22,00	1,50	1,50		0,03	30,0	179L-1	48,26	33,40	2,77	2,77	1 1/2" x 1" SCH 10S	0,17	63,5	A-403
29,00	13,00	1,50	1,50		0,01	44,0	179L-2	48,26	33,40	3,68	3,38	1 1/2" x 1" SCH 40S	0,22	63,5	A-403
29,00	19,00	1,50	1,50		0,02	27,5	179L-2	48,26	33,40	5,08	4,55	1 1/2" x 1" SCH 80S	0,29	63,5	A-403
29,00	23,00	1,50	1,50		0,03	16,5	179L-2	48,26	42,16	2,77	2,77	1 1/2" x 1 1/4" SCH 10S	0,18	63,5	A-403
33,40	21,33	2,77	2,11	1" x 1/2" SCH 10S	0,09	50,8	A-403	48,26	42,16	3,68	3,56	1 1/2" x 1 1/4" SCH 40S	0,24	63,5	A-403
33,40	21,33	3,38	2,77	1" x 1/2" SCH 40S	0,11	50,8	A-403	48,26	42,16	5,08	4,85	1 1/2" x 1 1/4" SCH 80S	0,32	63,5	A-403
33,40	21,33	4,55	3,73	1" x 1/2" SCH 80S	0,13	50,8	A-403	48,30	21,30	2,00	2,00		0,16	81,0	3(D-d)
33,40	26,67	2,77	2,11	1" x 3/4" SCH 10S	0,10	50,8	A-403	48,30	26,90	2,00	2,00		0,12	64,0	3(D-d)
33,40	26,67	3,38	2,87	1" x 3/4" SCH 40S	0,11	50,8	A-403	48,30	33,70	2,00	2,00		0,09	44,0	3(D-d)
33,40	26,67	4,55	3,91	1" x 3/4" SCH 80S	0,15	50,8	A-403	48,30	42,40	2,00	2,00		0,04	18,0	3(D-d)
33,70	13,50	2,00	2,00		0,07	60,6	3(D-d)	48,30	21,30	2,00	2,00		0,15	64,0	2616
33,70	17,20	2,00	2,00		0,07	50,0	3(D-d)	48,30	26,90	2,00	2,00		0,15	64,0	2616
33,70	21,30	2,00	2,00		0,05	37,0	3(D-d)	48,30	33,70	2,00	2,00		0,15	64,0	2616
33,70	26,90	2,00	2,00		0,03	20,0	3(D-d)	48,30	42,40	2,00	2,00		0,15	64,0	2616
33,70	21,30	2,00	2,00		0,08	50,0	2616	48,30	21,30	2,60	2,30		0,17	64,0	2616
33,70	26,90	2,00	2,00		0,08	50,0	2616	48,30	26,90	2,60	2,30		0,18	64,0	2616
33,70	21,30	2,60	2,30		0,10	50,0	2616	48,30	33,70	2,60	2,60		0,18	64,0	2616
33,70	26,90	2,60	2,30		0,10	50,0	2616	48,30	42,40	2,60	2,60		0,18	64,0	2616
33,70	21,30	3,60	2,90		0,13	50,0	2616	48,30	26,90	3,60	2,90		0,26	64,0	2616
33,70	26,90	3,60	2,90		0,14	50,0	2616	48,30	33,70	3,60	3,60		0,26	64,0	2616
33,70	21,30	4,50	4,00		0,16	50,0	2616	48,30	42,40	3,60	3,60		0,27	64,0	2616
33,70	26,90	4,50	4,00		0,16	50,0	2616	48,30	26,90	5,10	4,00		0,33	64,0	2616
34,00	22,00	1,50	1,50		0,03	35,0	179L-1	48,30	33,70	5,10	4,50		0,34	64,0	2616
34,00	28,00	1,50	1,50		0,06	67,0	179L	50,80	25,40	1,50	1,50		0,10	73,0	SMS
35,00	19,00	1,50	1,50		0,03	44,0	179L-2	50,80	38,10	1,50	1,50		0,10	67,0	SMS
35,00	23,00	1,50	1,50		0,03	33,0	179L-2	52,00	28,00	1,50	1,50		0,10	68,0	179L
35,00	29,00	1,50	1,50		0,04	16,5	179L-2	52,00	34,00	1,50	1,50		0,10	67,0	179L
38,10	25,40	1,50	1,50		0,08	67,0	SMS	52,00	40,00	1,50	1,50		0,11	67,0	179L
40,00	28,00	1,50	1,50		0,06	67,0	179L	53,00	29,00	1,50	1,50		0,08	66,0	179L-2
40,00	34,00	1,50	1,50		0,06	76,0	179L	53,00	35,00	1,50	1,50		0,11	49,5	179L-2
41,00	19,00	1,50	1,50		0,05	60,5	179L-2	53,00	41,00	1,50	1,50		0,07	33,0	179L-2

## Cod. 179

dimensions acc. to: DIN 11852 - DIN 2616 - ASTM A 403 - ISO / L=3(D-d) - SMS

### Materials:

AISI 304 (DIN 1.4301/7)  
 AISI 316L (DIN 1.4401/4)  
 AISI 321 (DIN 1.4541)  
 AISI 316Ti (DIN 1.4571)

### Surface:

without adjustment  
 outside surface brushed  
**For selected dimensions (on request):**  
 outside surface polished  
 outside surface polished / inside surface brushed  
 inside surface e-polished Ra 0,25 - 0,8 µm

D1	D2	S1	S2	SCH	kg/pc	L	Type	D1	D2	S1	S2	SCH	kg/pc	L	Type
54,00	30,00	2,00	2,00		0,14	75,0	3(D-d)	76,10	33,70	2,90	2,60		0,46	90,0	2616
60,30	21,30	2,00	2,00		0,27	117,0	3(D-d)	76,10	42,40	2,90	2,60		0,46	90,0	2616
60,30	26,90	2,00	2,00		0,22	100,0	3(D-d)	76,10	48,30	2,90	2,60		0,47	90,0	2616
60,30	33,70	2,00	2,00		0,19	80,0	3(D-d)	76,10	60,30	2,90	2,90		0,47	90,0	2616
60,30	42,40	2,00	2,00		0,14	54,0	3(D-d)	76,10	42,40	5,60	3,60		0,80	90,0	2616
60,30	48,30	2,00	2,00		0,10	36,0	3(D-d)	76,10	48,30	5,60	3,60		0,84	90,0	2616
60,30	26,90	2,00	2,00		0,21	76,0	2616	76,10	60,30	2,60	4,00		0,84	90,0	2616
60,30	33,70	2,00	2,00		0,21	76,0	2616	76,20	38,10	1,65	1,50		0,16	80,0	SMS
60,30	42,40	2,00	2,00		0,23	76,0	2616	76,20	50,80	1,65	1,50		0,18	67,0	SMS
60,30	48,30	2,00	2,00		0,23	76,0	2616	76,20	63,50	1,65	1,65		0,22	67,0	SMS
60,30	26,90	2,90	2,30		0,26	76,0	2616	84,00	54,00	2,00	2,00		0,30	90,0	3(D-d)
60,30	33,70	2,90	2,60		0,29	76,0	2616	85,00	52,00	2,00	1,50		0,19	79,0	179L
60,30	42,40	2,90	2,60		0,29	76,0	2616	85,00	53,00	2,00	1,50		0,21	85,0	179L-2
60,30	48,30	2,90	2,60		0,30	76,0	2616	85,00	70,00	2,00	2,00		0,24	67,0	179L
60,30	33,70	4,00	3,60		0,41	76,0	2616	85,00	70,00	2,00	2,00		0,14	41,2	179L-2
60,30	42,40	4,00	3,60		0,45	76,0	2616	88,90	33,70	2,00	2,00		0,51	166,0	3(D-d)
60,30	48,30	4,00	3,60		0,47	76,0	2616	88,90	42,40	2,00	2,00		0,46	139,0	3(D-d)
60,30	33,70	5,60	4,50		0,54	76,0	2616	88,90	48,30	2,00	2,00		0,43	122,0	3(D-d)
60,30	48,30	5,60	5,10		0,57	76,0	2616	88,90	60,30	2,00	2,00		0,52	86,0	3(D-d)
60,33	33,40	2,77	2,77	2" x 1" SCH 10S	0,23	76,1	A-403	88,90	76,10	2,00	2,00		0,16	38,0	3(D-d)
60,33	33,40	3,91	3,38	2" x 1" SCH 40S	0,32	76,1	A-403	88,90	48,30	2,60	2,00		0,46	90,0	2616
60,33	33,40	5,54	4,55	2" x 1" SCH 80S	0,44	76,1	A-403	88,90	60,30	2,60	2,00		0,46	90,0	2616
60,33	42,16	2,77	2,77	2" x 1 1/4" SCH 10S	0,25	76,1	A-403	88,90	76,10	2,60	2,30		0,49	90,0	2616
60,33	42,16	3,91	3,56	2" x 1 1/4" SCH 40S	0,35	76,1	A-403	88,90	48,30	3,20	2,60		0,58	90,0	2616
60,33	42,16	5,54	4,85	2" x 1 1/4" SCH 80S	0,48	76,1	A-403	88,90	60,30	3,20	2,90		0,60	90,0	2616
60,33	48,26	2,77	2,77	2" x 1 1/2" SCH 10S	0,27	76,1	A-403	88,90	76,10	3,20	2,90		0,60	90,0	2616
60,33	48,26	3,91	3,68	2" x 1 1/2" SCH 40S	0,37	76,1	A-403	88,90	48,30	5,60	3,60		1,00	90,0	2616
60,33	48,26	5,54	5,08	2" x 1 1/2" SCH 80S	0,51	76,1	A-403	88,90	60,30	5,60	4,00		1,06	90,0	2616
63,50	38,10	1,65	1,50		0,14	71,0	SMS	88,90	76,10	5,60	5,60		1,06	90,0	2616
63,50	50,80	1,65	1,50		0,16	67,0	SMS	88,90	60,30	8,00	5,60		1,30	90,0	2616
70,00	40,00	2,00	1,50		0,12	71,0	179L	88,90	76,10	8,00	7,10		1,30	90,0	2616
70,00	41,00	2,00	1,50		0,17	77,0	179L-2	88,90	48,26	3,05	2,77	3" x 2 1/2" SCH 10S	0,45	88,9	A-403
70,00	52,00	2,00	1,50		0,16	67,0	179L	88,90	48,26	5,49	3,68	3" x 2 1/2" SCH 40S	0,78	88,9	A-403
70,00	53,00	2,00	1,50		0,11	44,0	179L-2	88,90	48,26	7,62	5,08	3" x 2 1/2" SCH 80S	1,04	88,9	A-403
70,00	54,00	2,00	2,00		0,13	54,0	3(D-d)	88,90	60,30	3,05	2,77	3" x 2" SCH 10S	0,48	88,9	A-403
73,03	48,30	3,05	2,77	2 1/2" x 1 1/2" SCH 10S	0,39	88,9	A-403	88,90	60,30	5,49	3,91	3" x 2" SCH 40S	0,85	88,9	A-403
73,03	48,30	5,16	3,68	2 1/2" x 1 1/2" SCH 40S	0,66	88,9	A-403	88,90	60,30	7,62	5,54	3" x 2" SCH 80S	1,13	88,9	A-403
73,03	48,30	7,01	5,08	2 1/2" x 1 1/2" SCH 80S	0,83	88,9	A-403	88,90	73,03	3,05	3,05	3" x 2 1/2" SCH 10S	0,52	88,9	A-403
73,03	60,30	3,05	2,77	2 1/2" x 2" SCH 10S	0,43	88,9	A-403	88,90	73,03	5,49	5,16	3" x 2 1/2" SCH 40S	0,93	88,9	A-403
73,03	60,30	5,16	3,91	2 1/2" x 2" SCH 40S	0,72	88,9	A-403	88,90	73,03	7,62	7,01	3" x 2 1/2" SCH 80S	1,23	88,9	A-403
73,03	60,30	7,01	5,54	2 1/2" x 2" SCH 80S	0,92	88,9	A-403	101,60	50,80	2,00	1,50		0,31	110,0	SMS
76,10	33,70	2,00	2,00		0,35	127,0	3(D-d)	101,60	63,50	2,00	1,65		0,30	88,0	SMS
76,10	42,40	2,00	2,00		0,30	101,0	3(D-d)	101,60	76,20	2,00	1,65		0,28	67,0	SMS
76,10	48,30	2,00	2,00		0,26	83,0	3(D-d)	104,00	52,00	2,00	1,50		0,30	110,0	179L
76,10	60,30	2,00	2,00		0,16	47,0	3(D-d)	104,00	53,00	2,00	1,50		0,80	137,5	179L-2
76,10	60,30	3,00	3,00		0,25	47,0	3(D-d)	104,00	70,00	2,00	2,00		0,29	67,0	179L
76,10	33,70	2,30	2,00		0,36	90,0	2616	104,00	70,00	2,00	2,00		0,34	93,5	179L-2
76,10	42,40	2,30	2,00		0,36	90,0	2616	104,00	84,00	2,00	2,00		0,27	60,0	3(D-d)
76,10	48,30	2,30	2,00		0,39	90,0	2616	104,00	85,00	2,00	2,00		0,28	67,0	179L
76,10	60,30	2,30	2,00		0,39	90,0	2616	104,00	85,00	2,00	2,00		0,20	52,5	179L-2

## Cod. 179

dimensions acc. to: DIN 11852 - DIN 2616 - ASTM A 403 - ISO / L=3(D-d) - SMS

### Materials:

AISI 304	(DIN 1.4301/7)
AISI 316L	(DIN 1.4401/4)
AISI 321	(DIN 1.4541)
AISI 316Ti	(DIN 1.4571)

### Surface:

without adjustment  
 outside surface brushed  
**For selected dimensions (on request):**  
 outside surface polished  
 outside surface polished / inside surface brushed  
 inside surface e-polished Ra 0,25 - 0,8 µm

D1	D2	S1	S2	SCH	kg/pc	L	Type	D1	D2	S1	S2	SCH	kg/pc	L	Type
114,30	42,40	2,00	2,00		0,86	216,0	3(D-d)	168,30	114,30	4,50	3,60		2,86	140,0	2616
114,30	48,30	2,00	2,00		0,82	198,0	3(D-d)	168,30	139,70	4,50	4,00		2,86	140,0	2616
114,30	60,30	2,00	2,00		0,72	162,0	3(D-d)	168,30	88,90	7,10	5,60		3,80	140,0	2616
114,30	76,10	2,00	2,00		0,55	115,0	3(D-d)	168,30	114,30	7,10	6,30		3,80	140,0	2616
114,30	88,90	2,00	2,00		0,39	76,0	3(D-d)	168,30	139,70	7,10	7,10		3,85	140,0	2616
114,30	48,30	3,60	2,90		0,85	100,0	2616	204,00	154,00	2,00	2,00		1,33	510,0	3(D-d)
114,30	60,30	3,60	2,90		0,88	100,0	2616	206,00	156,00	3,00	3,00		2,00	150,0	3(D-d)
114,30	76,10	3,60	2,90		0,91	100,0	2616	219,08	114,30	3,76	3,05	8" x 4" SCH 10S	2,43	152,0	A-403
114,30	88,90	3,60	3,20		0,94	100,0	2616	219,08	114,30	8,18	6,02	8" x 4" SCH 40S	5,10	152,0	A-403
114,30	48,30	6,30	3,60		1,65	100,0	2616	219,08	168,30	3,76	3,40	8" x 6" SCH 10S	2,72	152,0	A-403
114,30	60,30	6,30	4,00		1,70	100,0	2616	219,08	168,30	8,18	7,11	8" x 6" SCH 40S	5,71	152,0	A-403
114,30	60,30	6,30	5,60		1,70	100,0	2616	219,10	114,30	2,00	2,00		2,66	314,0	3(D-d)
114,30	76,10	6,30	5,60		1,76	100,0	2616	219,10	139,70	2,00	2,00		2,17	238,0	3(D-d)
114,30	88,90	6,30	5,60		1,80	100,0	2616	219,10	168,30	2,00	2,00		1,50	152,0	3(D-d)
114,30	60,30	3,05	2,77	4" x 2" SCH 10S	0,67	101,6	A-403	219,10	114,30	6,30	3,60		6,30	152,0	2616
114,30	60,30	6,02	3,91	4" x 2" SCH 40S	1,27	101,6	A-403	219,10	139,70	6,30	4,00		6,40	152,0	2616
114,30	60,30	8,56	5,54	4" x 2" SCH 80S	1,76	101,6	A-403	219,10	168,30	6,30	5,00		6,50	152,0	2616
114,30	73,03	3,05	3,05	4" x 2½" SCH 10S	0,71	101,6	A-403	219,10	114,30	8,00	6,30		8,00	152,0	2616
114,30	73,03	6,02	5,16	4" x 2½" SCH 40S	1,37	101,6	A-403	219,10	139,70	8,00	7,10		8,10	152,0	2616
114,30	73,03	8,56	7,01	4" x 2½" SCH 80S	1,86	101,6	A-403	219,10	168,30	8,00	7,10		8,20	152,0	2616
114,30	88,90	3,05	3,05	4" x 3" SCH 10S	0,76	101,6	A-403								
114,30	88,90	6,02	5,49	4" x 3" SCH 40S	1,45	101,6	A-403								
114,30	88,90	8,56	7,62	4" x 3" SCH 80S	2,02	101,6	A-403								
129,00	84,00	2,00	2,00		0,70	135,0	3(D-d)								
129,00	85,00	2,00	2,00		0,38	121,0	179L-2								
129,00	104,00	2,00	2,00		0,28	68,5	179L-2								
139,70	76,10	2,00	2,00		1,04	191,0	3(D-d)								
139,70	88,90	2,00	2,00		0,88	152,0	3(D-d)								
139,70	114,30	2,00	2,00		0,49	76,0	3(D-d)								
139,70	76,10	2,90	2,30		1,16	127,0	2616								
139,70	76,10	4,00	2,90		1,60	127,0	2616								
139,70	88,90	4,00	3,20		1,68	127,0	2616								
139,70	114,30	4,00	2,60		1,70	127,0	2616								
141,30	88,90	3,40	3,05	5" x 3" SCH 10S	1,22	127,0	A-403								
141,30	88,90	6,55	5,49	5" x 3" SCH 40S	2,27	127,0	A-403								
141,30	114,30	3,40	3,05	5" x 4" SCH 10S	1,33	127,0	A-403								
141,30	114,30	6,55	6,02	5" x 4" SCH 40S	2,50	127,0	A-403								
154,00	104,00	2,00	2,00		0,53	137,5	179L-2								
154,00	129,00	2,00	2,00		0,29	68,5	179L-2								
154,00	129,00	2,00	2,00		0,52	75,0	3(D-d)								
168,28	114,30	3,40	3,05	6" x 4" SCH 10S	1,65	140,0	A-403								
168,28	114,30	8,18	6,02	6" x 4" SCH 40S	3,30	140,0	A-403								
168,28	114,30	10,97	8,56	6" x 4" SCH 80S	4,96	140,0	A-403								
168,28	114,30	3,40	3,40	6" x 5" SCH 10S	1,78	140,0	A-403								
168,28	114,30	8,18	7,11	6" x 5" SCH 40S	3,57	140,0	A-403								
168,30	88,90	2,00	2,00		1,55	238,0	3(D-d)								
168,30	114,30	2,00	2,00		1,16	162,0	3(D-d)								
168,30	139,70	2,00	2,00		0,67	86,0	3(D-d)								
168,30	88,90	2,90	2,30		1,76	140,0	2616								
168,30	88,90	4,50	3,20		2,80	140,0	2616								