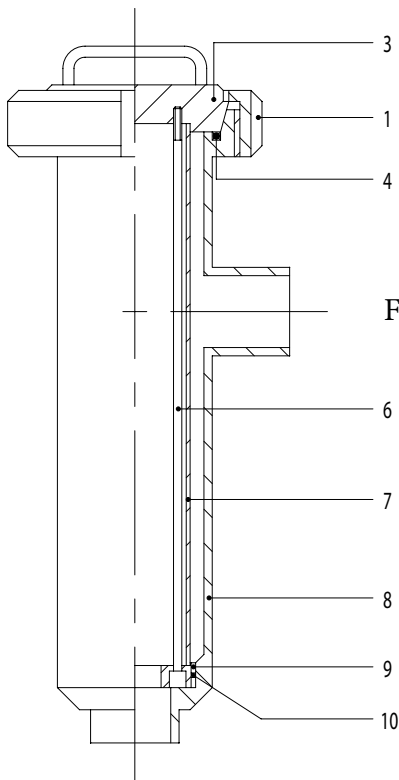


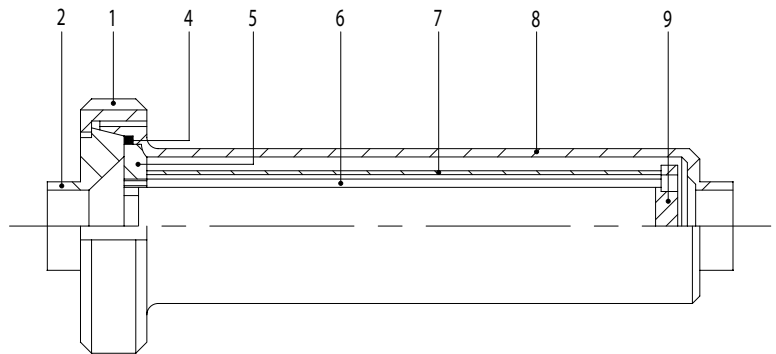




- filtering parts easily extractable
- standard production: sheet metal cartridges with holes diam. 1 mm  
on request available with holes diam. 0,5 - 2 - 3 mm  
(or with metal screen cover mesh 80-500)
- standard finish: 120 grain - external polishing, internal glazing, other finishes on request
- maximum operating pressure: 5 bar



Filter 90°



Line filter

1. nut
2. plain connection
3. blank
4. seal
5. upper disk
6. tie rod
7. filter
8. filter casing
9. lower disk
10. OR-seal ring

Pos.	code line filter	code 90° filter	Norm	1" 25	D25 28	D32 34	1 1/2" 38	D40 40	2" 51	D50 52	2 1/2" 63	D65 70	3" 76	D80 85	4" 101	D100 101	4" 104	D100 104	Mat.
1	121	121	D	65	65	65	65	65	65	65	80	80	100	100	100	100	100	100	4L/6L
2	116		D	65/25	65/28	65/34	65/38	65/40	65/51	65/52	80/63	80/70	100/76	100/85	100/101	100/101	100/104	100/104	4L/6L
3		410		65	65	65	65	65	65	65	80	80	100	100	100	100	100	100	4L/6L
4	131	131	D	65	65	65	65	65	65	65	80	80	100	100	100	100	100	100	N
5	400			25/52	25/52	25/52	25/52	25/52	25/52	25/52	63/70	63/70	76/85	76/85	101	101	101	101	6L
6	400	410		25/40	25/40	25/40	25/40	25/40	51/52	51/52	63/70	63/70	76/85	76/85	101	101	101	101	6L
7	400	410		25/52	25/52	25/52	25/52	25/52	25/52	25/52	63/70	63/70	76/85	76/85	101	101	101	101	6L
8	400	410		25/40	25/40	25/40	25/40	25/40	51/52	51/52	63/70	63/70	76/85	76/85	101	101	101	101	4L/6L
9	400	410	L	25	28	34	38	40	51	52	63	70	76	85	101	101	101	101	6L
10		OR		159	159	159	159	159	159	159	174	174	4350	4350	3375	3375	3375	3375	N

## Flowrate m<sup>3</sup>/h

Fluid speed m / sec	0,50	1,0	1,5	2,0
25,4	0,745	1,494	2,239	2,988
28	0,882	1,764	2,646	3,528
34	1,447	2,894	4,341	5,788
38,1	1,785	3,571	5,356	7,142
40	2,041	4,082	6,123	8,164
50,8	3,294	6,588	9,882	13,176
52	3,531	7,063	10,594	14,126
63,5	5,191	10,382	15,573	20,764
70	6,152	11,336	18,460	24,616
76,2	7,509	15,019	22,528	30,038
85	9,270	18,540	27,810	37,080
101,6	14,130	28,260	42,390	56,520

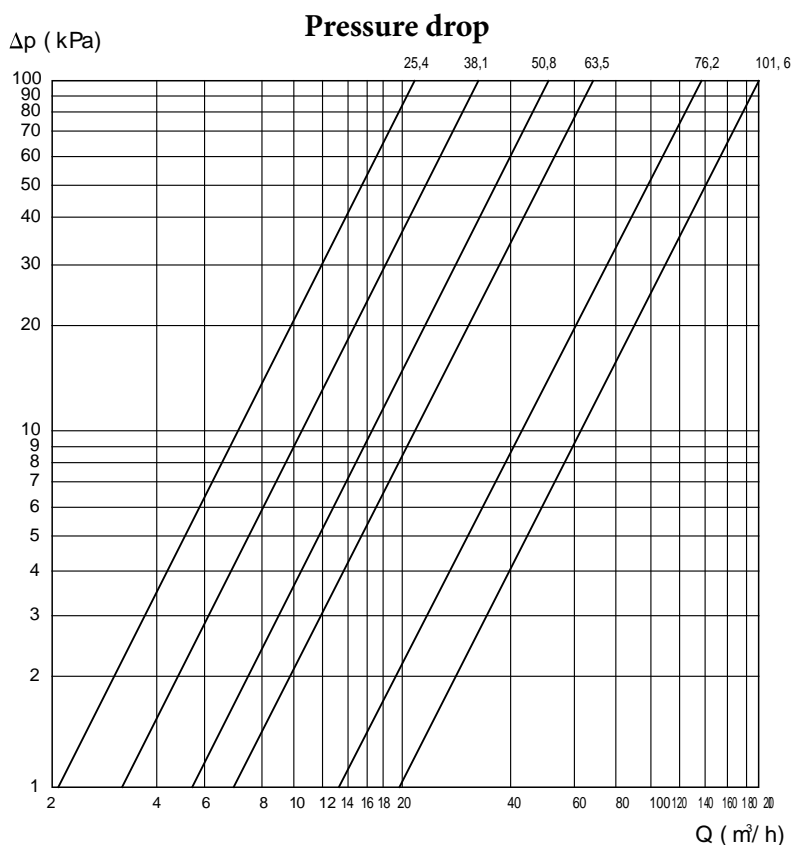
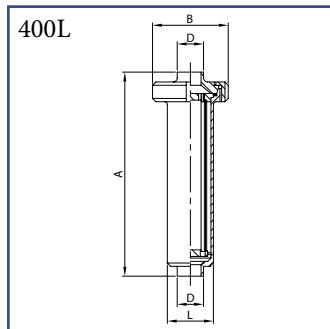


Table of meshes for filters

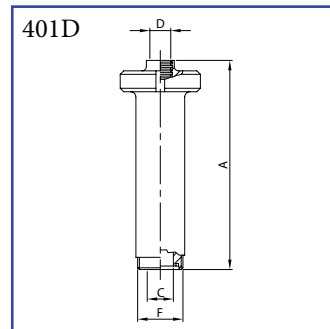
Mesh	Micron (0,001 mm)	Milimeters
66	300	0,3
80	220	0,22
100	180	0,18
150	120	0,12
200	86	0,08
250	59	0,06
300	50	0,05
400	35	0,03
500	26	0,02

Line filter  
for welding  
AISI 304L, AISI 316L



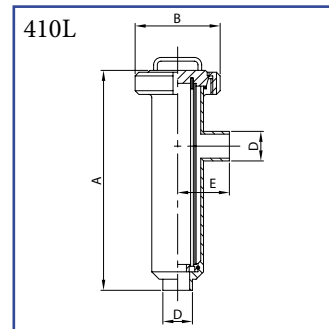
DN	A	B	D	L	Kg
28	320,0	112,0	28,0	70,0	3,00
34	320,0	112,0	34,0	70,0	3,00
40	320,0	112,0	40,0	70,0	3,00
52	420,0	112,0	52,0	70,0	3,30
70	516,0	127,0	70,0	85,0	4,65
85	575,0	148,0	85,0	102,0	5,70
101	700,0	148,0	101,6	129,0	7,00
104	700,0	148,0	104,0	129,0	7,00

Line filter  
male part / expanding end  
AISI 304L, AISI 316L



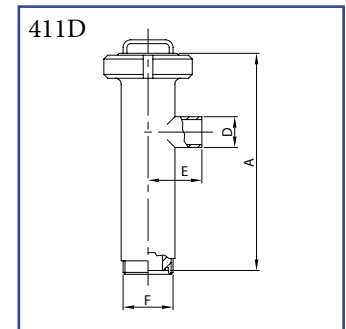
DN	A	C	D	F	Kg
25	320,0	25,0	28,0	52-6	3,13
32	320,0	31,0	34,0	58-6	3,17
40	320,0	37,0	40,0	65-6	3,21
50	420,0	49,0	52,0	78-6	3,58
65	521,0	66,0	70,0	95-6	5,03
80	584,0	81,0	85,0	110-4	6,30
100	690,0	97,6	101,6	130-4	8,00
104	690,0	100,0	104,0	130-4	8,00

Filter 90°  
for welding  
AISI 304L, AISI 316L



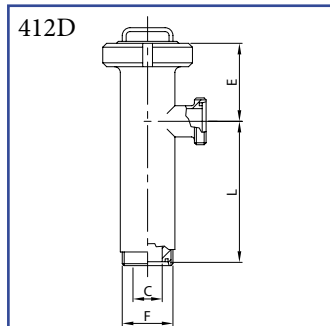
DN	A	B	D	E	Kg
28	306,0	112,0	28,0	70,0	3,10
34	306,0	112,0	34,0	70,0	3,10
40	306,0	112,0	40,0	70,0	3,10
52	406,0	112,0	52,0	72,0	3,40
70	503,0	127,0	70,0	85,0	4,80
85	561,0	148,0	85,0	96,0	5,90
101	662,0	148,0	101,6	117,0	7,20
104	662,0	148,0	104,0	117,0	7,20

Filter 90°  
male part / expanding end  
AISI 304L, AISI 316L



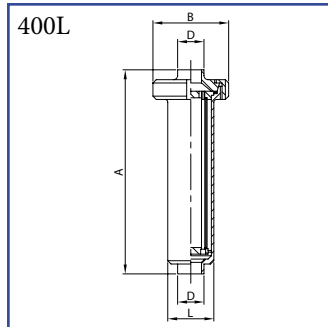
DN	A	D	E	F	Kg
25	300,0	28,0	70,0	52-6	3,23
32	300,0	34,0	70,0	58-6	3,27
40	300,0	40,0	70,0	65-6	3,31
50	398,0	52,0	72,0	78-6	3,68
65	495,0	70,0	85,0	95-6	5,18
80	553,0	85,0	96,0	110-4	6,70
100	642,0	101,6	117,0	130-4	8,20
104	642,0	104,0	117,0	130-4	8,20

Filter 90°  
with male parts  
AISI 304L, AISI 316L



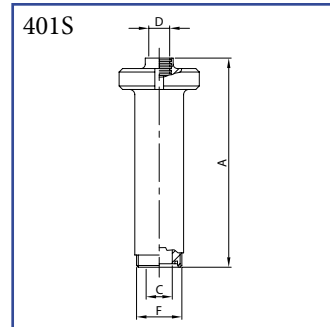
DN	C	E	F	L	Kg
25	25,0	100,0	52-6	200,0	3,36
32	31,0	100,0	58-6	200,0	3,44
40	37,0	100,0	65-6	200,0	3,52
50	49,0	115,0	78-6	283,0	3,96
65	66,0	117,0	95-6	378,0	5,56
80	81,0	131,0	110-4	422,0	7,10
100	97,6	120,0	130-4	522,0	9,20
104	100,0	120,0	130-4	522,0	9,20

Line filter  
for welding  
AISI 304L, AISI 316L



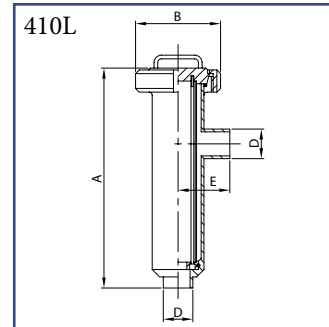
DN	A	B	D	L	Kg
25	320,0	112,0	25,4	70,0	3,00
38	320,0	112,0	38,1	70,0	3,00
51	420,0	112,0	50,8	70,0	3,30
63	516,0	127,0	63,5	85,0	4,65
76	574,0	148,0	76,2	102,0	5,70
101	700,0	148,0	101,6	129,0	7,00

Line filter  
male part / expanding end  
AISI 304L, AISI 316L



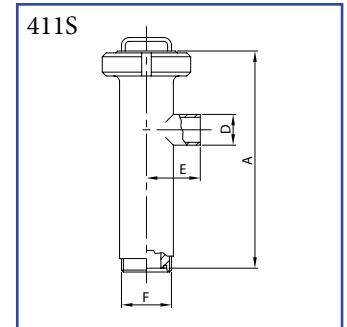
DN	A	C	D	F	Kg
25	327,0	22,4	25,4	40-6	3,07
38	327,0	35,1	38,1	60-6	3,20
51	427,0	47,8	50,8	70-6	3,53
63	529,0	60,5	63,5	85-6	5,04
76	594,0	72,9	76,2	98-6	6,20
101	700,0	97,6	101,6	132-6	8,14

Filter 90°  
for welding  
AISI 304L, AISI 316L



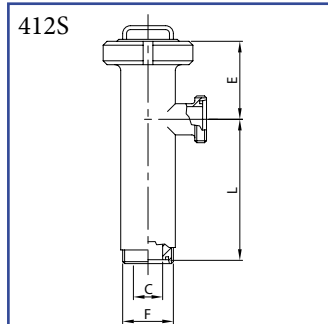
DN	A	B	D	E	Kg
25	307,0	112,0	25,4	70,0	3,10
38	307,0	112,0	38,1	70,0	3,10
51	407,0	112,0	50,8	82,0	3,40
63	503,0	127,0	63,5	85,0	4,80
76	561,0	148,0	76,2	96,0	5,90
101	662,0	148,0	101,6	117,0	7,20

Filter 90°  
male part / expanding end  
AISI 304L, AISI 316L



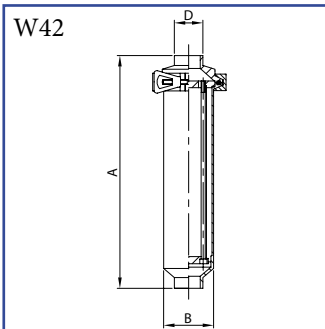
DN	A	D	E	F	Kg
25	306,0	25,4	70,0	40-6	3,17
38	306,0	38,1	70,0	60-6	3,30
51	405,0	50,8	72,0	70-6	3,62
63	503,0	63,5	85,0	85-6	5,19
76	561,0	76,2	96,0	98-6	6,40
101	652,0	101,6	117,0	132-6	8,34

Filter 90°  
with male parts  
AISI 304L, AISI 316L



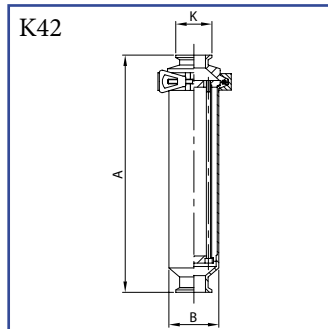
DN	C	E	F	L	Kg
25	22,4	99,0	40-6	207,0	3,24
38	35,1	99,0	60-6	207,0	3,50
51	47,8	115,0	70-6	290,0	3,85
63	60,5	117,0	85-6	386,0	5,58
76	72,9	131,0	98-6	430,0	6,90
101	97,6	120,0	132-6	532,0	9,48

Line filter  
for welding  
AISI 304L, AISI 316L



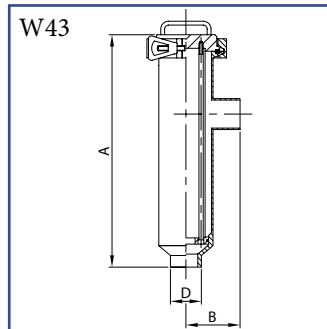
DN	A	B	D	Kg	
1"	25	326,0	70,0	25,4	3,00
1 1/2"	38	326,0	70,0	38,1	3,00
2"	51	426,0	70,0	50,8	3,30
2 1/2"	63	524,5	85,0	63,5	4,65
3"	76	568,0	101,0	76,2	5,70

Line filter  
with CLAMP ends  
AISI 304L, AISI 316L



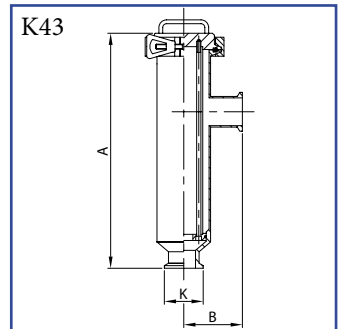
DN	A	B	K	Kg	
1"	25	326,0	70,0	50,5	3,17
1 1/2"	38	326,0	70,0	50,5	3,30
2"	51	426,0	70,0	64,0	3,62
2 1/2"	63	524,5	85,0	77,5	5,19
3"	76	568,0	101,0	91,0	6,40

Filter 90°  
for welding  
AISI 304L, AISI 316L



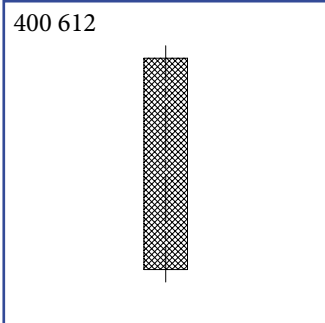
DN	A	B	D	Kg	
1"	25	304,0	70,0	25,4	3,10
1 1/2"	38	304,0	70,0	38,1	3,10
2"	51	404,0	72,0	50,8	3,40
2 1/2"	63	497,0	85,0	63,5	4,80
3"	76	548,0	96,0	76,2	5,90

Filter 90°  
with CLAMP ends  
AISI 304L, AISI 316L



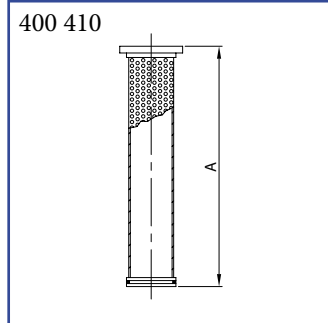
DN	A	B	K	Kg	
1"	25	304,0	82,7	50,5	3,24
1 1/2"	38	304,0	82,7	50,5	3,50
2"	51	404,0	84,7	64,0	3,85
2 1/2"	63	497,0	97,7	77,5	5,59
3"	76	548,0	108,7	91,0	6,90

Mesh covering



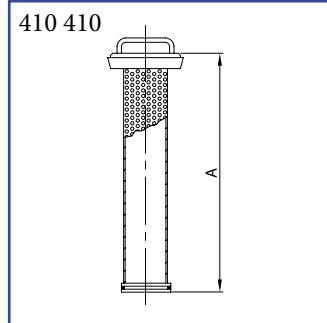
DN	MESH
25/40	100/200 300 400 500
51/52	100/200 300 400 500
63/70	100/200 300 400 500
76/85	100/200 300 400 500
101/104	100/200 300 400 500

Cartridge  
for line filter  
AISI 304L, AISI 316L



DN	A
25/40	271,0
51/52	371,0
63/70	466,0
76/85	516,0
101/104	621,0

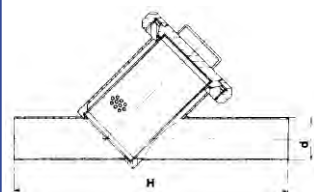
Cartridge  
for filter 90°  
AISI 304L, AISI 316L



DN	A
25/40	278,0
51/52	378,0
63/70	473,0
76/85	527,0
101/104	636,0

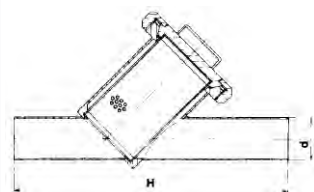
Filter 45° DIN  
for welding  
AISI 304/L, AISI 316/L

401L



Filter 45° SMS  
for welding  
AISI 304/L, AISI 316/L

401L



Filter 45°  
flanged with full bore  
AISI 316/L

YF



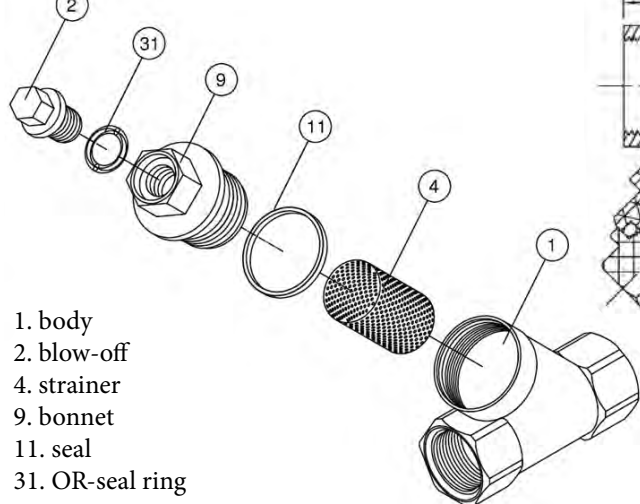
DN	d	H
25	28	170
32	34	175
40	40	220
50	52	260
65	70	290
80	85	380
100	104	545

DN	d	H
1"	25,4	170
1 1/2"	38,1	220
2"	50,8	260
2 1/2"	63,5	290
3"	76,2	380
4"	101,6	545

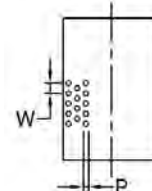
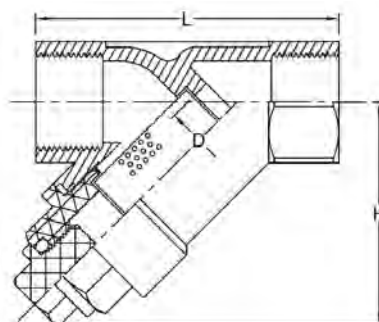
DN	PN	Norm
25 to 50	1/2" to 2"	PN 40
65 to 150	2 1/2" to 6"	PN 16
15 to 150	1/2" to 6"	150 lbs
		ANSI

Filter 45°  
threaded DIN 2999/BSP  
AISI 316

YS800



- 1. body
- 2. blow-off
- 4. strainer
- 9. bonnet
- 11. seal
- 31. OR-seal ring



DN	L	H	D	W	P	kg
8	1/4"	65,0	51,0	10,0	2,0	1,0
10	3/8"	65,0	51,0	12,0	2,0	1,0
15	1/2"	65,0	51,0	15,0	2,0	1,0
20	3/4"	80,0	60,0	20,0	2,0	1,0
25	1"	90,0	72,0	25,0	2,0	1,0
32	1 1/4"	105,0	77,0	32,0	2,0	1,0
40	1 1/2"	120,0	87,0	40,0	2,0	1,0
50	2"	140,0	103,0	50,0	2,0	1,0

- PN 40
- temperature range: -20 to 180 °C
- threads DIN 2999/BSP
- Y-type with full bore
- stainless steel strainer
- PN 40, 1/4" - 2"
- PTFE seal