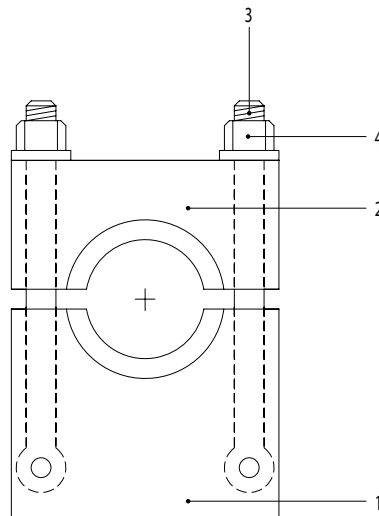




- Made of top grade solution heat-treated steel.
- High strength.

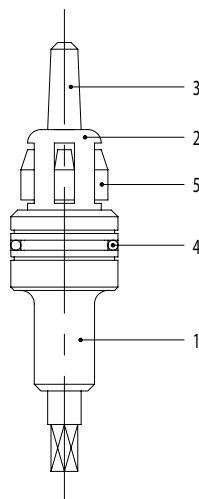
Clamping block for expanding

1. Bottom block
2. Upper part
3. Spindle
4. Nut



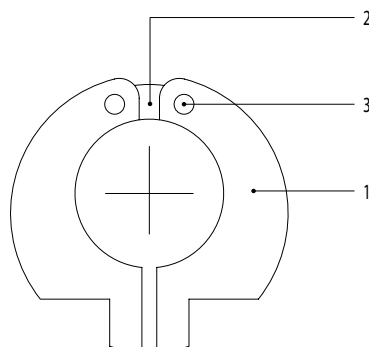
Expander

1. Body
2. Roller cage
3. Pin
4. Ball bearing
5. Rollers



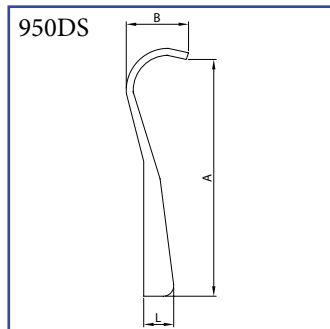
Cutting wrench

1. Clamp jaw
2. Clamp joint
3. Pin



Spanner for nuts

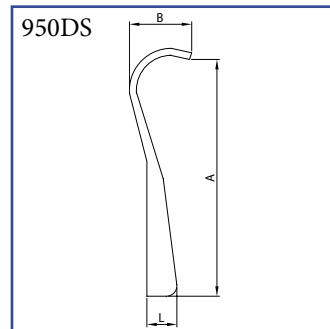
AISI 304L



DN	A	B	L	kg
25	255,0	55,0	25,0	0,33
32	255,0	55,0	25,0	0,33
40	255,0	55,0	25,0	0,33
50	255,0	55,0	25,0	0,33
65	255,0	55,0	25,0	0,33
80	255,0	55,0	25,0	0,33
100	255,0	55,0	25,0	0,33

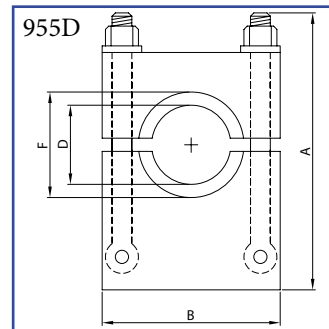
Spanner for nuts

AISI 304L



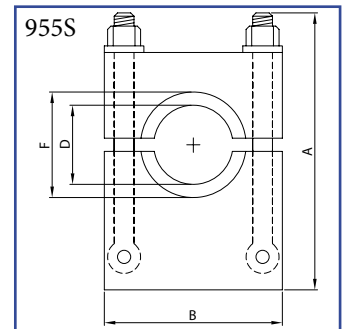
DN	A	B	L	kg
25	255,0	55,0	25,0	0,33
38	255,0	55,0	25,0	0,33
51	255,0	55,0	25,0	0,33
63	255,0	55,0	25,0	0,33
76	255,0	55,0	25,0	0,33
101	255,0	55,0	25,0	0,33

Clamping block for expanding C40



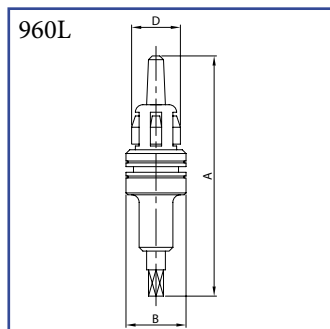
DN	A	B	D	F	kg
25	138,0	110,0	35,0	52,0	2,30
32	138,0	110,0	41,0	58,0	2,30
40	150,0	130,0	48,0	65,0	3,00
50	165,0	140,0	61,0	78,0	3,40
65	190,0	150,0	78,0	95,0	4,20
80	195,0	180,0	93,0	110,0	7,00
100	230,0	200,0	114,0	130,0	8,20

Clamping block for expanding C40



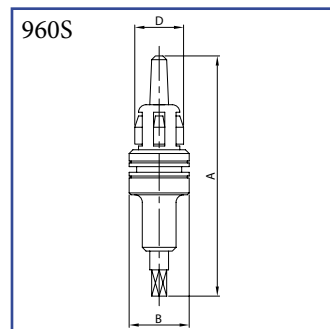
DN	A	B	D	F	kg
25	136,0	110,0	32,0	40,0	3,10
38	136,0	110,0	48,0	60,0	4,60
51	165,0	140,0	61,0	70,0	4,90
63	175,0	150,0	73,5	85,0	6,50
76	190,0	160,0	86,0	98,0	7,00
101	200,0	180,0	116,0	132,0	8,20

Expander C40



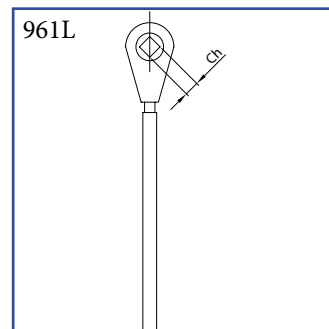
DN	A	B	D	kg
28	205,0	35,0	28,0	0,54
32	210,0	42,0	34,0	0,84
40	210,0	47,0	40,0	1,13
50	210,0	59,0	52,0	1,73
65	250,0	77,0	70,0	3,10
80	260,0	88,0	85,0	4,30
100	270,0	107,0	104,0	6,35

Expander C40



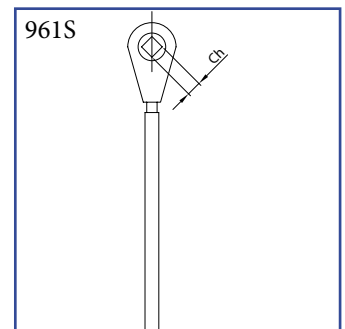
DN	A	B	D	kg
25	205,0	35,0	25,4	0,47
38	210,0	42,0	38,1	1,14
51	210,0	59,0	50,8	1,73
63	250,0	77,0	63,5	2,85
76	260,0	88,0	76,2	3,84
101	270,0	107,0	101,6	6,35

Spanner for expander C40



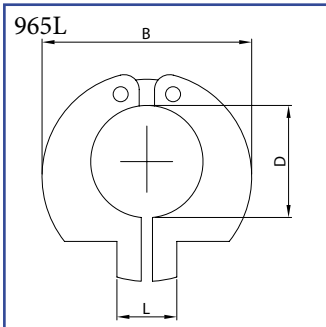
DN	Ch	kg
25	8,0	0,40
32	10,0	0,70
40	12,0	0,70
50	14,0	1,20
65	16,0	1,20
80	22,0	1,80
100	22,0	1,80

Spanner for expander C40



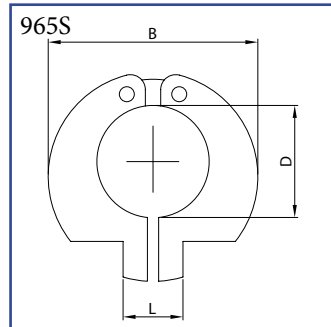
DN	Ch	kg
25	8,0	0,40
38	12,0	0,70
51	14,0	1,20
63	16,0	1,20
76	20,0	1,80
101	22,0	1,80

Cutting wrench
C40



DN	D	B	L	kg
10	12,0			
10	13,0			
15	18,0			
15	19,0			
20	22,0			
20	23,0			
25	28,0			
25	29,0			
32	34,0			
32	35,0			
40	40,0			
40	41,0			
50	52,0			
50	53,0			
65	70,0			
80	85,0			
100	104,0			

Cutting wrench
C40



DN	B	D	L	kg
25	77,0	25,4	23,0	0,40
38	77,0	38,1	23,0	0,58
51	87,0	50,8	30,0	0,76
63	107,0	63,5	42,0	0,98
76	120,0	76,2	52,0	1,15
101	147,0	101,6	57,0	1,90