

**STAINLESS STEEL PRESSURE GAUGE WITH GLYCERINE Ø 100**

**armat**  
spol. s r.o.  
MADE OF STAINLESS ...

**EWC**



**Size :** Diameter 100  
**Ends :** Male BSP  
**Min Temperature :** + 0°C  
**Max Temperature :** + 60°C  
**Pressure :** From -1 to 60 Bars  
**Specifications :** All stainless steel  
Stainless steel mechanism  
With glycerine  
Safety glass

**Materials :** SS 304 box

**STAINLESS STEEL PRESSURE GAUGE WITH GLYCERINE Ø 100**

**SPECIFICATIONS :**

All stainless steel  
Stainless steel mechanism  
With glycerine  
Safety glass  
1 Class  
Protection IP65  
Bottom connection BSP threaded  
With vent security

**USE :**

Not for viscous or crystallizing liquid  
Min and max Temperature Ts : 0°C to +60°C

**RANGE :**

All stainless steel pressure gauge with glycerine Ø 100 with 1/2" BSP bottom connection , range from -1/+1 to 0/60 bars **Ref. 1618**  
All stainless steel pressure gauge with glycerine Ø 100 with 1/2" BSP back connection , range from -1/+1 to 0/60 bars **Ref. 1628**

**ACCESSORIES :**



Front stainless steel flange with 3 holes at 120° for back connection type **1628**  
○ Ø 100 **Ref. 9880112**



Steel support with screws  
○ Ø 100 **Ref. 9880012**



SS curl PN20 Male / Female BSP  
○ DN 1/2" **Ref. 9880208**



250 ml glycerine bottle **Ref. 9880401**

**STAINLESS STEEL PRESSURE GAUGE WITH GLYCERINE Ø 100**
**GRADUATIONS :**

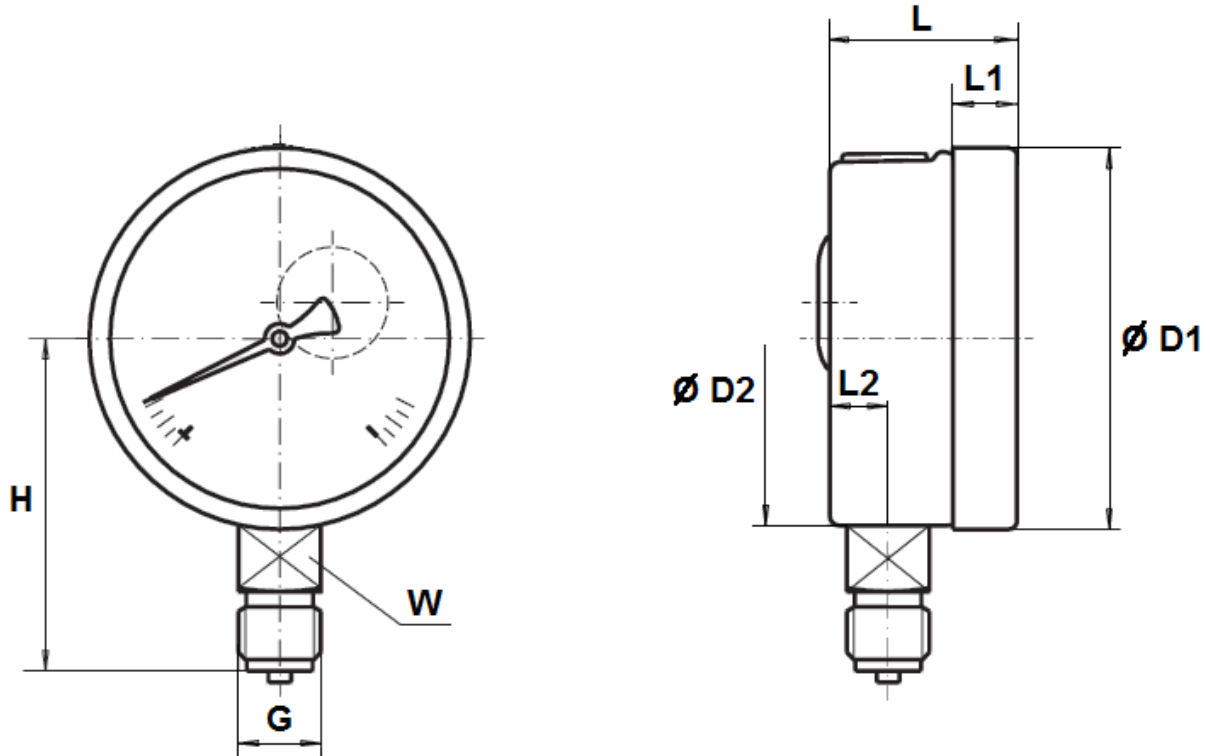
Range (bar)	Graduation (bar)
-1 / +1	0,05
0 / 1,6	0.02
0 / 2,5	0.05
0 / 4	0,1
0 / 6	0,1
0 / 10	0,2
0 / 16	0,2
0 / 25	0,5
0 / 40	1
0 / 60	1

**MATERIALS :**

DESIGNATION	MATERIALS
Box	SS 304
Fitting	SS 316
Mechanism	SS 316
Dial	Aluminium
Glass	Safety glass
Needle	Aluminium

**STAINLESS STEEL PRESSURE GAUGE WITH GLYCERINE Ø 100**

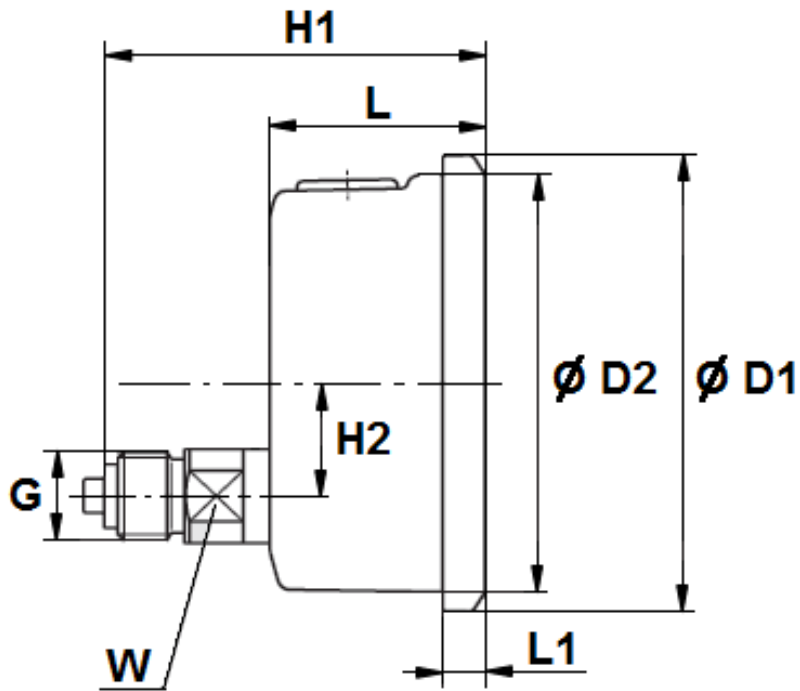
*SIZE FOR BOTTOM CONNECTION TYPE REF. 1618 ( in mm ):*



Ref.	DN	100
1618	Ø D1	100.8
	Ø D2	98.6
	H	90
	G	1/2" BSP
	L	48
	L1	14.5
	L2	16
	W	22
	Weight ( Kg )	0.768

**STAINLESS STEEL PRESSURE GAUGE WITH GLYCERINE Ø 100**

SIZE FOR BACK CONNECTION TYPE REF.1628 ( in mm ) :



Ref.	DN	100
1628	Ø D1	112.5
	Ø D2	101
	H1	86
	H2	30.6
	G	1/2" BSP
	L	47.50
	L1	14.20
	W	22
	Weight ( Kg )	0.76

**STAINLESS STEEL PRESSURE GAUGE WITH GLYCERINE Ø 100**

**STANDARDS :**

Fabrication according to ISO 9001 : 2008

Designing according to EN 837-1

DIRECTIVE 97/23/CE : Products excluded from directive ( article 3, § 3 )

**ADVICE :** Our opinion and our advice are not guaranteed and SFERACO shall not be liable for the consequences of damages.  
The customer must check the right choice of the products with the real service conditions.