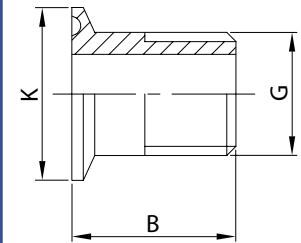


Adaptér
CLAMP / závit
AISI 304/L, AISI 316/L

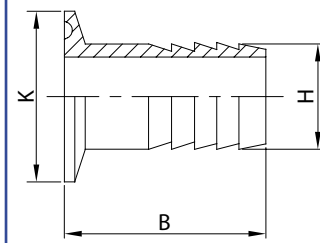
K14B



DN	G	B	K
15	1/2"	48	34
20	3/4"	53	50,5
25	1"	53	50,5
32	1 1/4"	63	50,5
40	1 1/2"	63	64
50	2"	66	77,5
65	2 1/2"	76	91
80	3"	86	106
100	4"	96	130

Hadicový nástavec
s koncem CLAMP
AISI 304/L, AISI 316/L

K14R

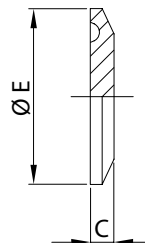


DN	H	B	K
10	13	44	34
15	19 (16)*	58	34
20	21,3	63	34
25	26,9	73	50,5
32	33,7	78	50,5
40	42,4 (40)*	88	50,5
50	52	93	64
63	63,5	126	77,5
65	76,1	126	91
80	83	136	106
100	102	136	119

* volitelný parametr

Zaslepovací hrdlo
CLAMP
AISI 316/L

K16



E	C
Ø 25,0	4,75
Ø 34,0	6,35
Ø 50,5	6,35
Ø 64,0	6,35
Ø 77,5	6,35
Ø 91,0	7,0
Ø 106,0	8,0
Ø 119,0	8,0
Ø 130,0	8,0
Ø 144,4	8,0
Ø 155,0	12,0
Ø 167,0	*
Ø 183,0	12,0
Ø 217,4	*
Ø 233,5	12,0
Ø 268,0	*
Ø 286,1	*
Ø 319,0	*
Ø 338,0	*

* rozměr na poptávku



Jiné provedení na poptávku
materiál / rozměry ...