

STAINLESS STEEL ANGLE SEAT VALVE HF 32L

MAIN CHARACTERISTICS

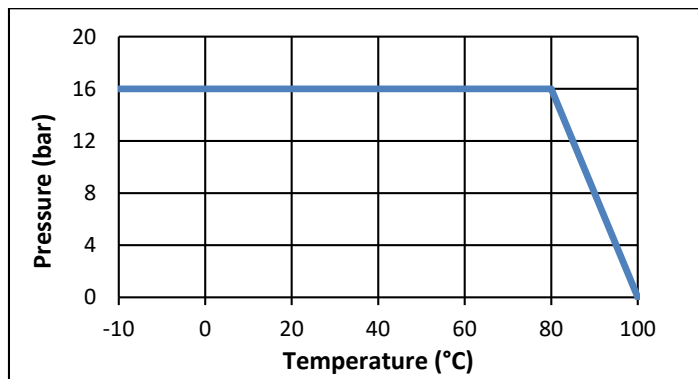
The angle seated pneumatic valve HF 32L is dedicated for the automatic shut off of the networks of fluids. The angle seated body allows a very low pressure loss. The body and internal parts in stainless steel allows the use of the HF valve on numerous fluids for pressures until 16 bar and temperatures until 100°C. The rotative head in stainless steel, allows the installation of the valve HF 32L in aggressive atmospheres and/or in hygienic atmospheres, more particularly in the food industry and pharmaceutical industry.

AVAILABLE MODELS

G 3/8" to G 3/4" : BSP Screwed end connections.
Spring return NC with flow under the disc.

LIMITS OF USE

PS fluid :	16 bar
TS fluid :	-10° / +100°C
Room temperature	-10° / +60°C
Air supply pressure :	3 to 10 bar max



REGULATIONS AND STANDARD OF CONSTRUCTION

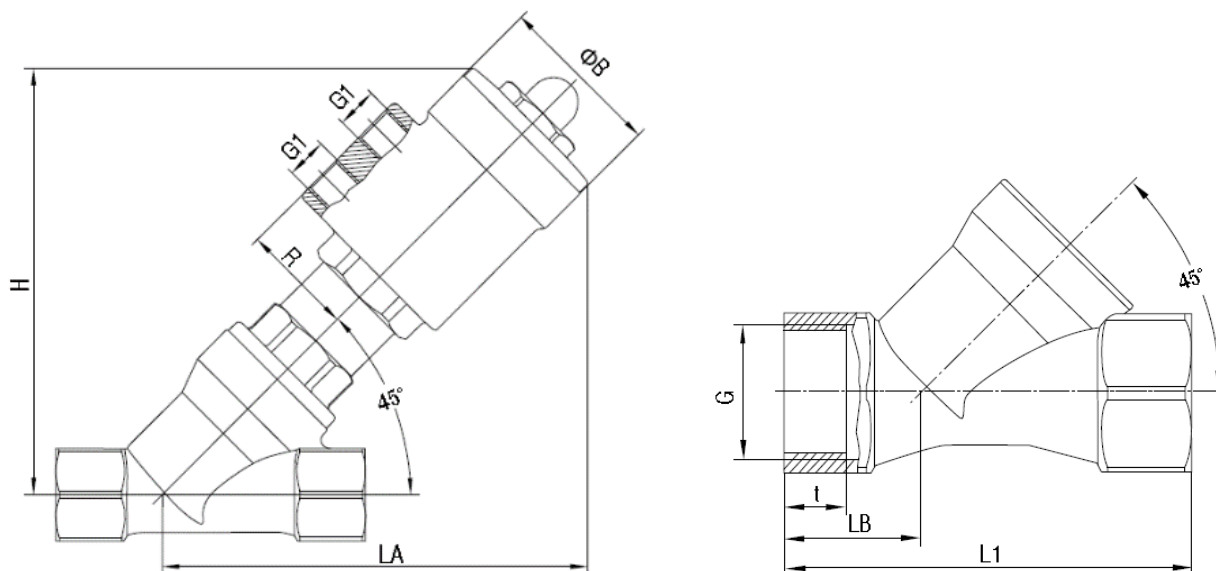
Item	Standard
P.E.D 97/23	3/8" to 3/4" : A3 § 3 excluded
Materials of the stainless steel	EN 10213-4
Thread	ISO 228

Modifications reserved

STAINLESS STEEL ANGLE SEAT VALVE HF 32L

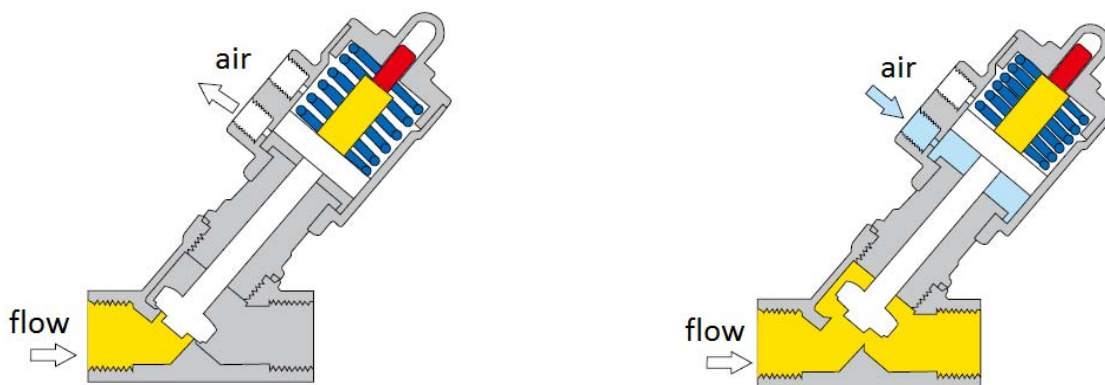
DIMENSIONS (mm) AND CONNECTIONS

DN (G)	ø Head	B	R	G1	H	LA	L1	LB	T
G 3/8"	32	40	27	G 1/8"	90	90	74	25,5	10
G 1/2"	32	40	27	G 1/8"	90	90	74	25,5	11,5
G 3/4"	32	40	27	G 1/8"	90	90	84	29	14



HYDRAULIC CHARACTERISTICS

DN	Port (mm)	Kv (m ³ /h)	Max diff. pressure (bar)	Min air supply pressure (bar)
G 3/8"	13	4,7	6	5
G 1/2"	13	4,7	6	5
G 3/4"	15	5,4	4	5

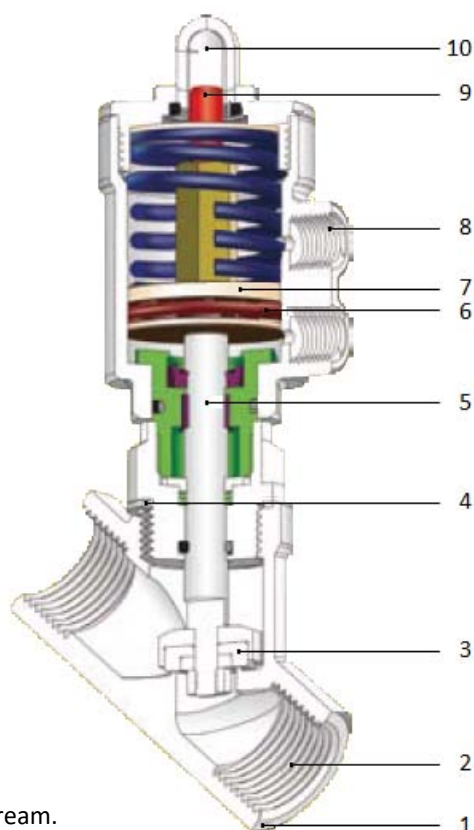


Modifications reserved

STAINLESS STEEL ANGLE SEAT VALVE HF 32L

CONSTRUCTION

N°	Item	Material
1	Body	Stainless steel 1,4408
2	Screwed end connections	BSP
3	Disc	Stainless steel 316 + PTFE
4	Disc gasket	PTFE
5	Stem	Stainless steel 316
6	Piston ring	NBR
7	Piston	Aluminium
8	Connections (Air supply)	G 1/8"
9	Position indicator	PP
10	Top cap	PC



MOUNTING

- 1 - Before any installation, shut off the pipe upstream and downstream.
- 2 - Depressurize and drain the pipe.
- 3 - Wait for its cooling at room temperature.
- 4 - Carry the necessary safety equipments for this type of intervention (gloves and glasses).
- 5 - Install the valve with respecting the sense of assembly indicated by the arrow on the body.
- 6 - Connect the air supply on the lower hole G 1/8 " by means of the appropriate join.
- 7 - Equippe the upper hole G 1/8 " with a silencer in stainless steel (SECTORIEL code: 041191).
- 8 - Verify the functioning of the valve by means of the indicator item 9.

MAINTENANCE

- 1 - The valve HF 32L requires no particular maintenance.
- 2 - In case of on-line leaking, verify the state of the disc item 3 and the pressure air supply.
- 3 - In case of stein's leaking, verify the state of the packing gland.
- 4 - In case of leaking at the piloting head, verify the state of the piston ring.

Modifications reserved