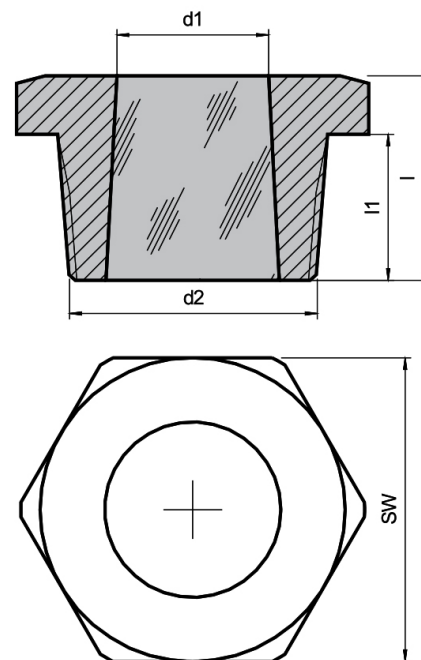
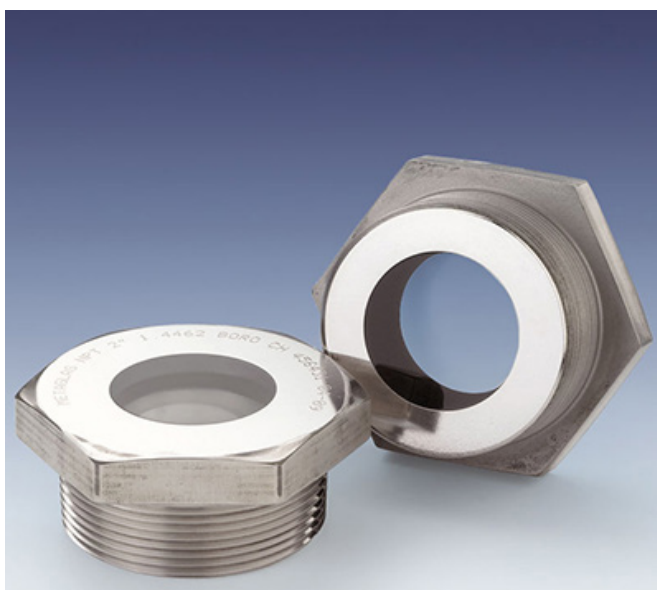


# Threaded Sight Glass type 62NPT – NPT-Thread



## Applications:

- Female connection with NPT or NPTF thread

## Advantages:

- Very compact
- High pressure resistance
- Simple assembly
- Long working time

## Operating conditions:

- Pressure: 100 bar
- Temperature: -30 °C to +150 °C

## Technical data:

Manufactured and tested to::

- Directive for pressure equipment 2014/68/EU, Module H (DIN/EN/ISO 9001)
- AD 2000 Standards W0/TRD 100
- Sight glass fused to metal similar to DIN 7079
- Materials to VdTÜV specifications and the DIN/EN designated standards

## Material certificates:

- Certificate of Conformity to EN 10204-3.1

## Materials:

- Ring material: Carbon Steel 1.0570, Stainless Steel 1.4523
- Glass: Sodalime glass to DIN 8902

d2 – Thread	SW	d1	d4	l	l1
¼" NPT	21	8	17	17	11
3/8" NPT	24	10	20	20	13
½" NPT	31	12	25	25	15
¾" NPT	36	15	26	26	16
1" NPT	41	19	32	32	18
1¼" NPT	50	22	35	35	23
1½" NPT	55	22	32	32	20
2" NPT	70	35	33	33	22