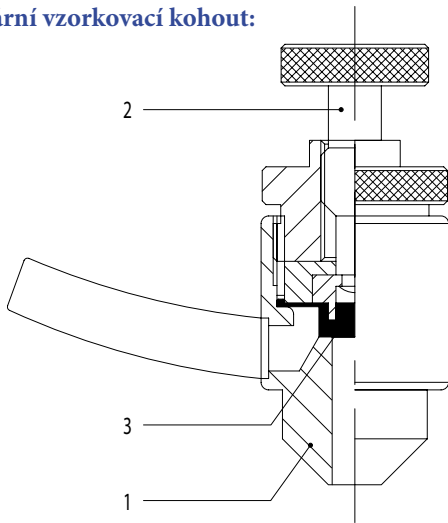
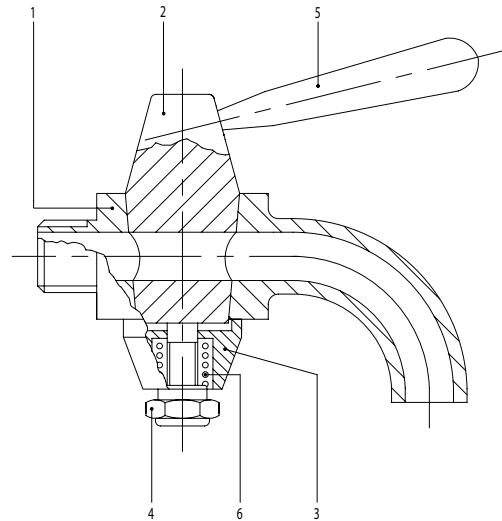


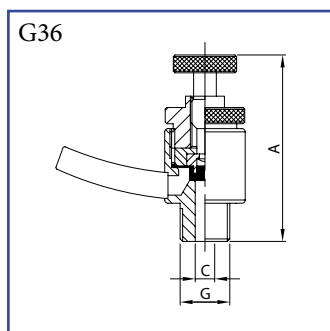


Sanitární vzorkovací kohout:


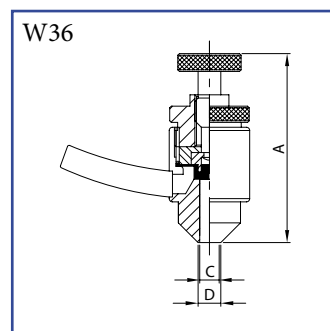
Pozice	Název	Kód	Norma	1/2"	Materiál
1	Kryt	36	W	8	316L
1	Kryt	36	K	12	316L
1	Kryt	36	G	1/4"	316L
2	Uzávěr	36		12	316L
3	Těsnění	36		12	silikon

Vzorkovací kohout s kolenem:


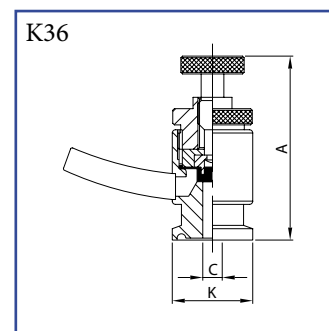
Pozice	Název	Kód	Norma	1/4"	3/8"	1/2"	Mat.
1	Kryt	033	G	14	38	12	316L
2	Kuželka	033		14/38	14/38	12	316L
3	Držák pružiny	033		14/38	14/38	12	316L
4	Pojistná matice	033		14/38	14/38	12	304L
5	Rukojěť	033		14/12	14/12	14/12	304L
6	Pružina	033		14/38	14/38	12	304L

Sanitární vzorkovací kohout BSP


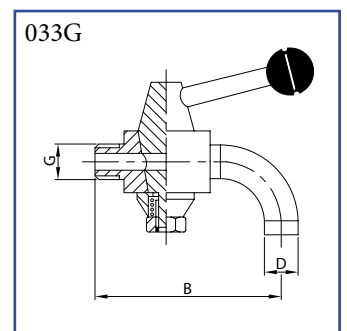
DN	A	C	G	Kg
14	57,6	6,0	1/4"	0,12

Sanitární vzorkovací kohout přivařovací


DN	A	C	D	Kg
8	57,6	6,0	8,0	0,12

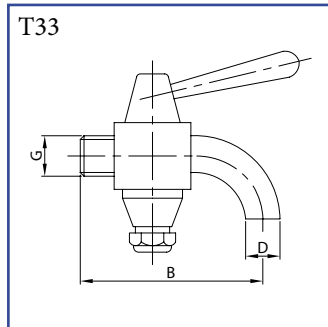
Sanitární vzorkovací kohout CLAMP


DN	A	C	K	Kg
1/2"	12	57,6	9,4	25,0

Vzorkovací kohout s kolenem


DN	B	D	G	Kg
14	60,0	11,0	1/4"	0,175
38	60,0	11,0	3/8"	0,185
12	68,0	13,7	1/2"	0,33

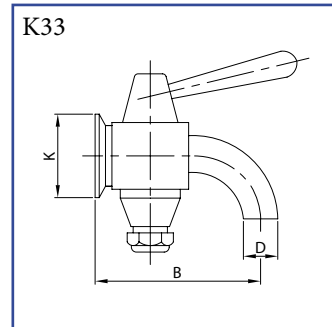
Vzorkovací kohout s kolenem NPT



T33

DN	B	D	G	Kg	
1 1/2"	38	78,0	11,0	3/8"	0,185

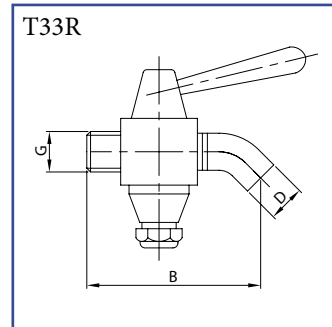
Vzorkovací kohout s kolenem CLAMP



K33

DN	B	D	K	Kg	
1"	25	68,0	11,0	50,5	0,2

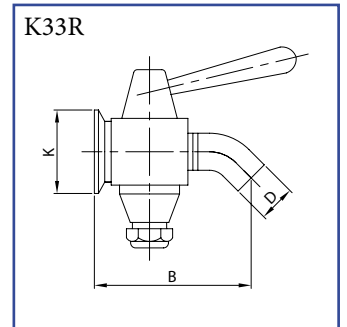
Vzorkovací kohout s kolenem NPT



T33R

DN	B	D	G	Kg	
1 1/2"	38	84,0	11,0	3/8"	0,185

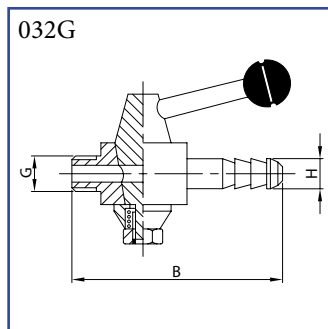
Vzorkovací kohout s kolenem CLAMP



K33R

DN	B	D	K	Kg	
1"	25	76,0	11,0	50,5	0,2

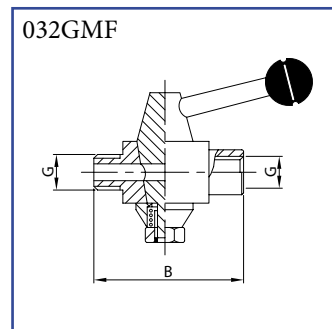
Vzorkovací kohout hadicová spojka



032G

DN	B	G	H	Kg
14	70,0	1/4"	12,0	0,17
38	83,0	3/8"	12,0	0,18
12	106,0	1/2"	15,0	0,32

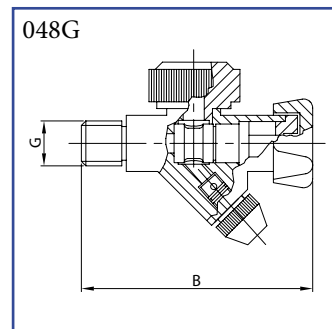
Vzorkovací kohout vnitřní závit



032GMF

DN	B	G	Kg
12	56,0	1/2"	0,34

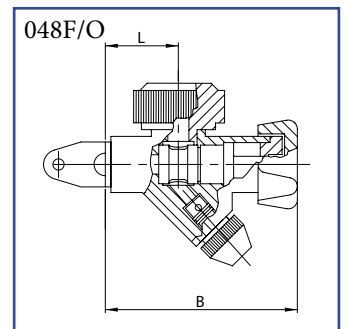
Vzorkovací kohout



048G

DN	B	G	Kg
12	105,0	1/2"	0,49

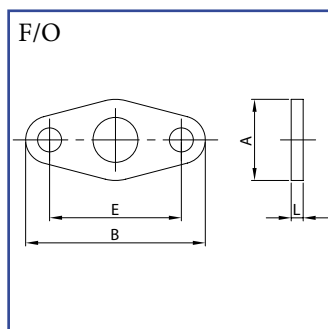
Vzorkovací kohout s přírubou



048F/O

DN	B	L	Kg
1/2"	91,0	30,0	0,46

Oválná příruba



F/O

DN	A	B	E	L	Kg
1/2"	30,0	60,0	43,0	6,0	0,02