

**PTFE LUG BUTTERFLY VALVE EXCELLENCE RANGE**

 **armat**  
spol. s r.o.  
MADE OF STAINLESS ...



**Lloyd's Register**

PED 97/23/CE



**Size :** DN 40 to 300 mm  
**Ends :** Between flanges PN10/16  
**Min Temperature :** - 25°C  
**Max Temperature :** + 200°C  
**Max Pressure :** 16 Bars up to DN150  
**Specifications :** Long neck for isolation  
Lug type  
2 parts body  
ISO 5211 mounting pad

**Materials :** Ductile iron EN GJS 500-7

\*the installation defects and wear defects are not covered by the guarantee

## PTFE LUG BUTTERFLY VALVE EXCELLENCE RANGE

### SPECIFICATIONS :

Long neck for isolation  
ISO 5211 mounting pad  
Lug type  
Between flanges PN10/16 up to DN150, PN10 over  
2 parts body  
Full crossing stem  
PTFE seat 3 mm thickness with silicone elastic gasket 6 mm thickness  
Stainless steel disc  
9 positions lever with locking device up to DN200  
Rilsan coated body color RAL 5024 , 250-300 microns thickness  
Stem extension 75 mm length ( option )  
Square lever 30x30 mm for special key ( option )

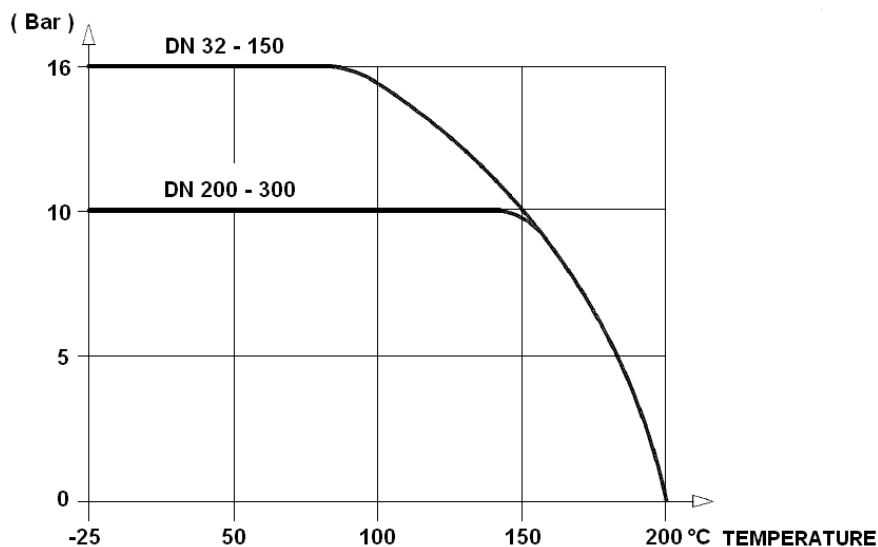
### USE :

For corrosives fluids ( acids ... )  
Min and max Temperature Ts : - 25°C to + 200°C  
Max Pressure Ps : 16 bars up to DN150, 10 bars over ( see graph under )

### RANGE :

With lever from DN 32/40 to DN 200  
With IP65 gear box from DN 250 to DN 300 ( possible from DN 32/40 to DN200 : **Ref. 1197** )  
IP65 chain gear box possible ( **Ref. 1194** ) from DN 32/40 to DN 300  
On request , stem extension with special length ( **Ref. 98665** )  
On request, stainless steel lever and bolting ( **Ref. 9831250-9831264** )

### PRESSURE / TEMPERATURE GRAPH ( STEAM EXCLUDED ) :



### ENDS :

Between flanges PN10/16 up to DN150, PN10 over

## PTFE LUG BUTTERFLY VALVE EXCELLENCE RANGE

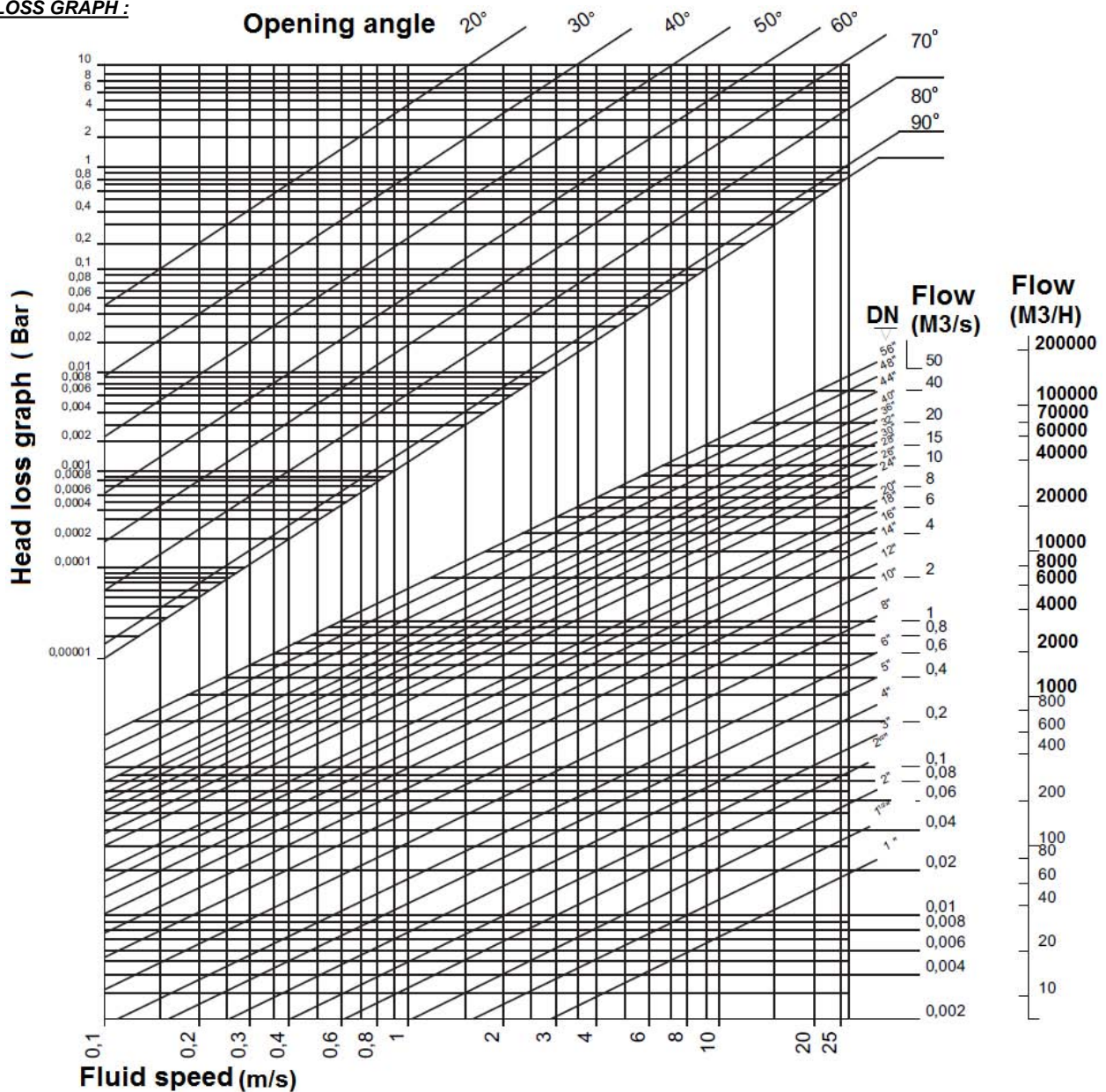
**TORQUE VALUES ( in Nm with safety coefficient of 30 % included ) at 10 Bars :**

DN	32/40	50	65	80	100	125	150	200	250	300
Torque ( Nm )	25	40	45	75	90	160	180	230	475	680

**FLOW COEFFICIENT Kvs ( m<sup>3</sup>/h ) :**

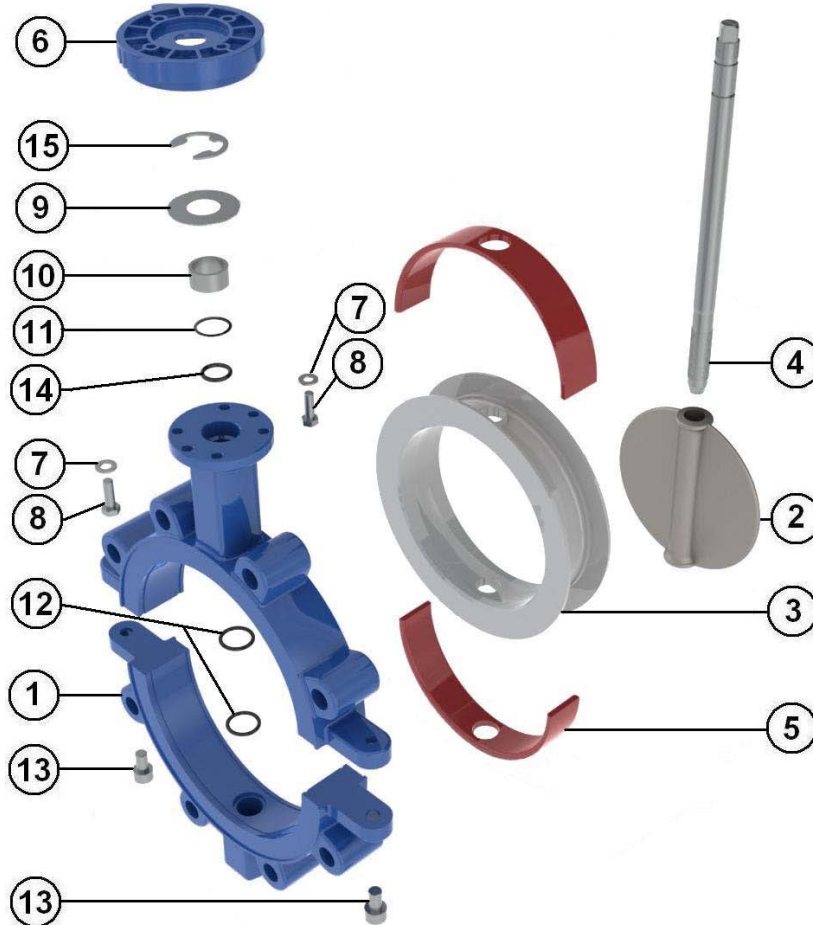
DN	32/40	50	65	80	100	125	150	200	250	300
Kvs ( m <sup>3</sup> /h )	70	109	200	334	551	901	1427	2383	3825	5659

**HEAD LOSS GRAPH :**



**PTFE LUG BUTTERFLY VALVE EXCELLENCE RANGE**

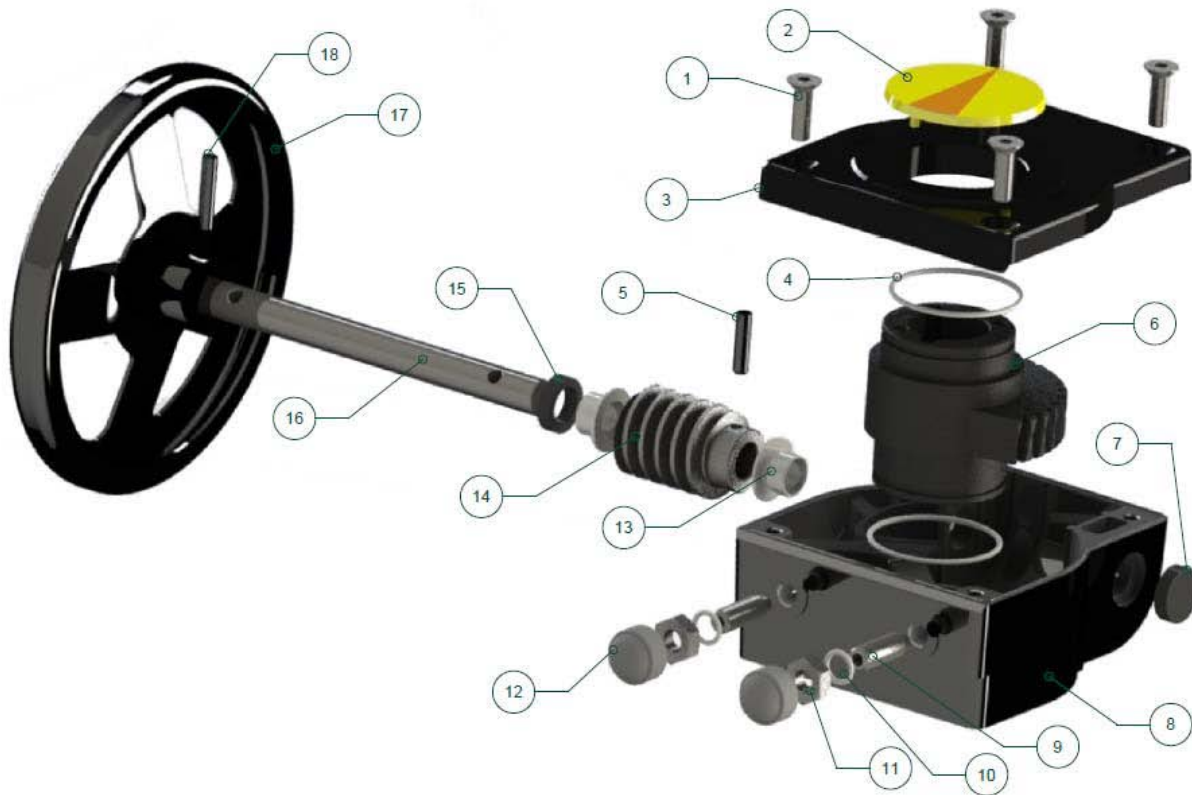
**MATERIALS :**



Item	Designation	Materials
1	Body	Ductile iron EN GJS-500-7
2	Disc	ASTM A351 CF8M
3	Seat	PTFE
4	Stem DN 40-50 and 150 - 300	SS 17 4-PH ( 630 )
4	Stem DN 65 – 125	AISI 316
5	Insert	Silicone
6	Plate	Aluminium
7	Washer	A4
8	Plate screw	A4
9	Ring	SS 316
10	Socket	SS 316
11	O ring	FKM
12	O ring	FKM
13	Screw	A4
14	O ring	FKM
15	Circlips	SS 316
	Handle	Aluminium ADC10 with epoxy painting 50µ thickness

**PTFE LUG BUTTERFLY VALVE EXCELLENCE RANGE**

GEARBOX MATERIALS REF. 1197 :

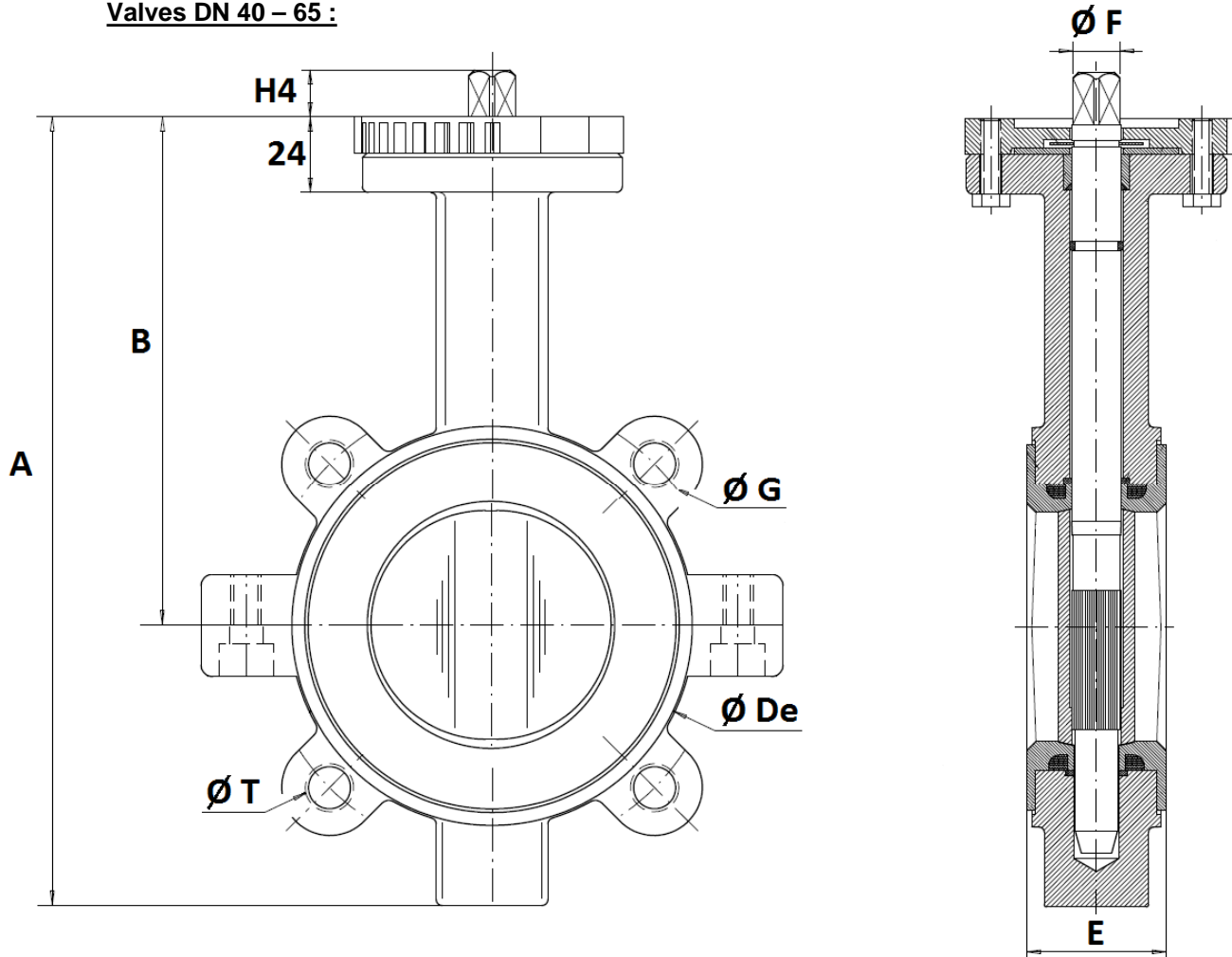


Item	Designation	Materials Ref. 1197
1	Screw	SS 304
2	Indicator	Polypropylene
3	Cover	Aluminium
4	O ring	NBR
5	Pin	Carbon steel
6	Quadrant	Ductile iron EN GJS-400-15
7	Gasket	NBR
8	Body	Aluminium
9	Adjusting bolt	Carbon steel
10	Washer	Galvanized steel
11	Nut	Galvanized steel
12	Cap	NBR 70
13	Bushing	Bronze
14	Worm	Carbon steel 45
15	Gasket	NBR
16	Shaft	Carbon steel 45
17	Handwheel	Carbon steel
18	Pin	Carbon steel

**PTFE LUG BUTTERFLY VALVE EXCELLENCE RANGE**

SIZE PN16 ( in mm ) :

Valves DN 40 – 65 :

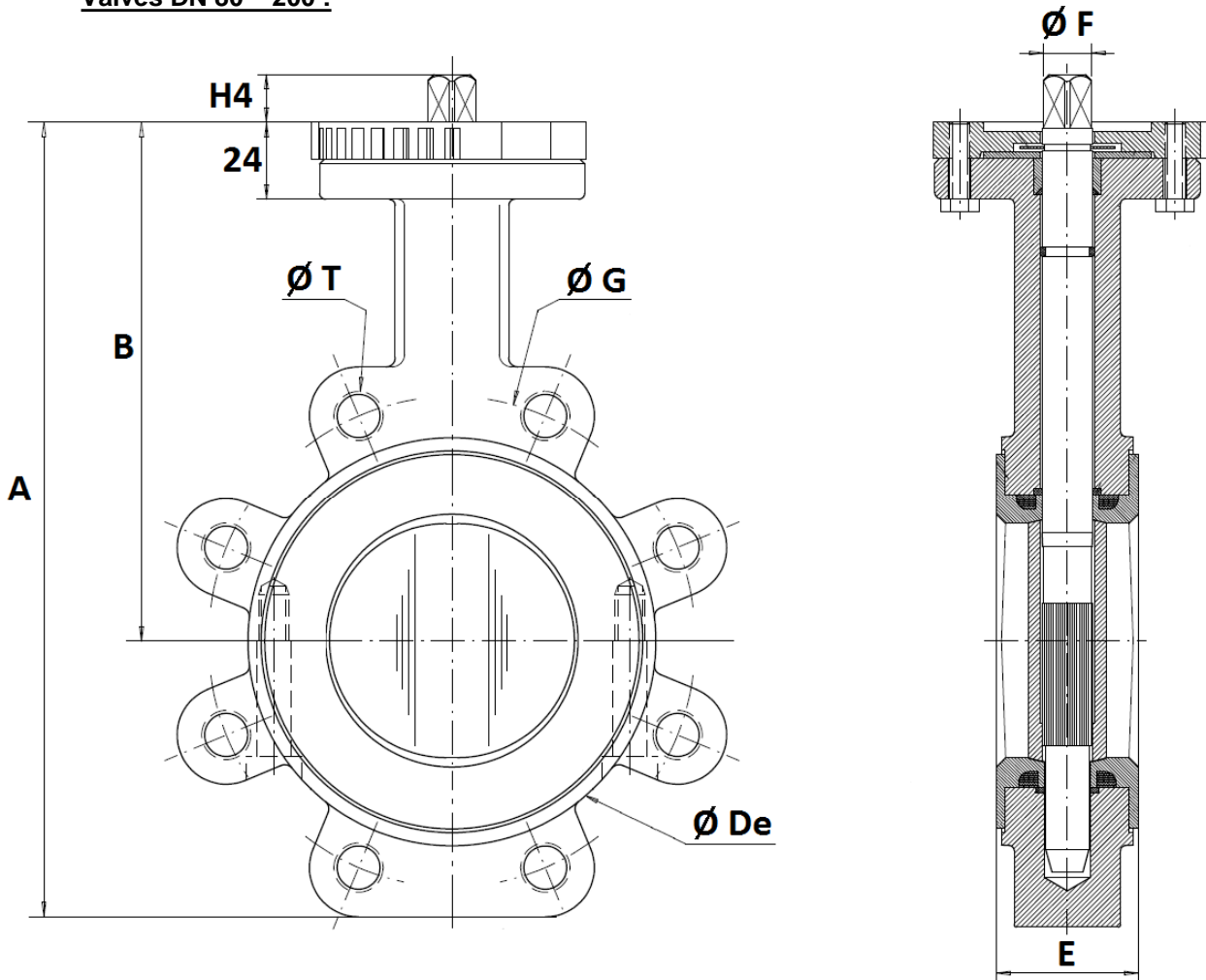


DN	40	50	65
A	205	226	242
B	140	156	161
Ø De	82	103	116
E	33	43	46
Ø F	9.5	9.5	12
Ø G	110	125	145
H4	14	14	16
Ø T	4 x M16	4 x M16	4 x M16
Weight (Kg)	3	4	5

**PTFE LUG BUTTERFLY VALVE EXCELLENCE RANGE**

SIZE PN10 ( in mm ):

Valves DN 80 – 200 :

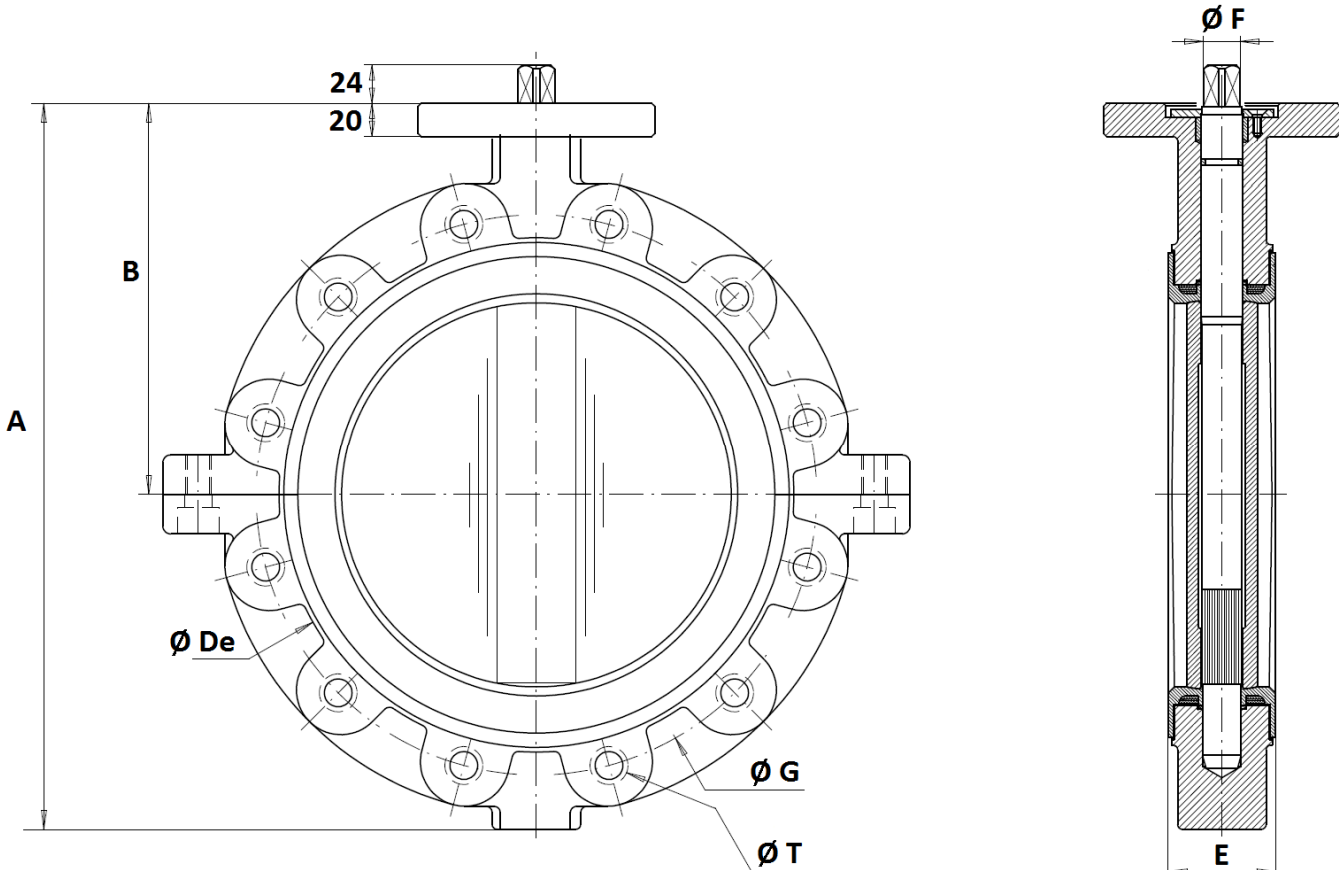


DN	80	100	125	150	200
A	257	288	325	346	437
B	167	184	207	215	257
Ø De	134	153	185	208	270
E	47	52	56	56	60
Ø F	14	14	17	17	21
Ø G	160	180	210	240	295
H4	16	20	20	20	24
Ø T	8 x M16	8 x M16	8 x M16	8 x M20	8 x M20
Weight (Kg)	6.5	8	11	13	22

**PTFE LUG BUTTERFLY VALVE EXCELLENCE RANGE**

SIZE PN10 ( in mm ) :

Valves DN 250 – 300 :

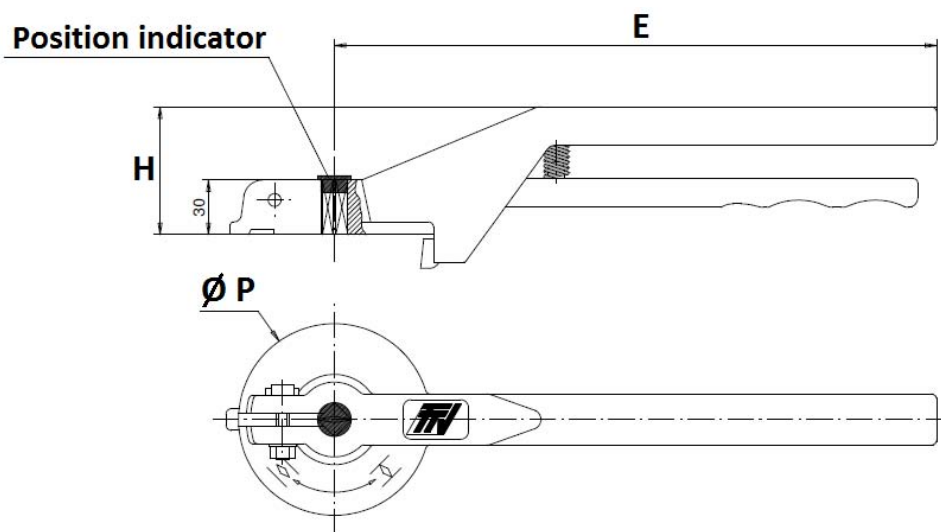


DN	250	300
A	448	514
B	248	280
Ø De	320	373
E	68	78
Ø F	23	26.5
Ø G	350	400
Ø T	12 x M20	12 x M20
Weight (Kg)	37	58



**PTFE LUG BUTTERFLY VALVE EXCELLENCE RANGE**

LEVERS SIZE DN 32 - 200 ( in mm ) :

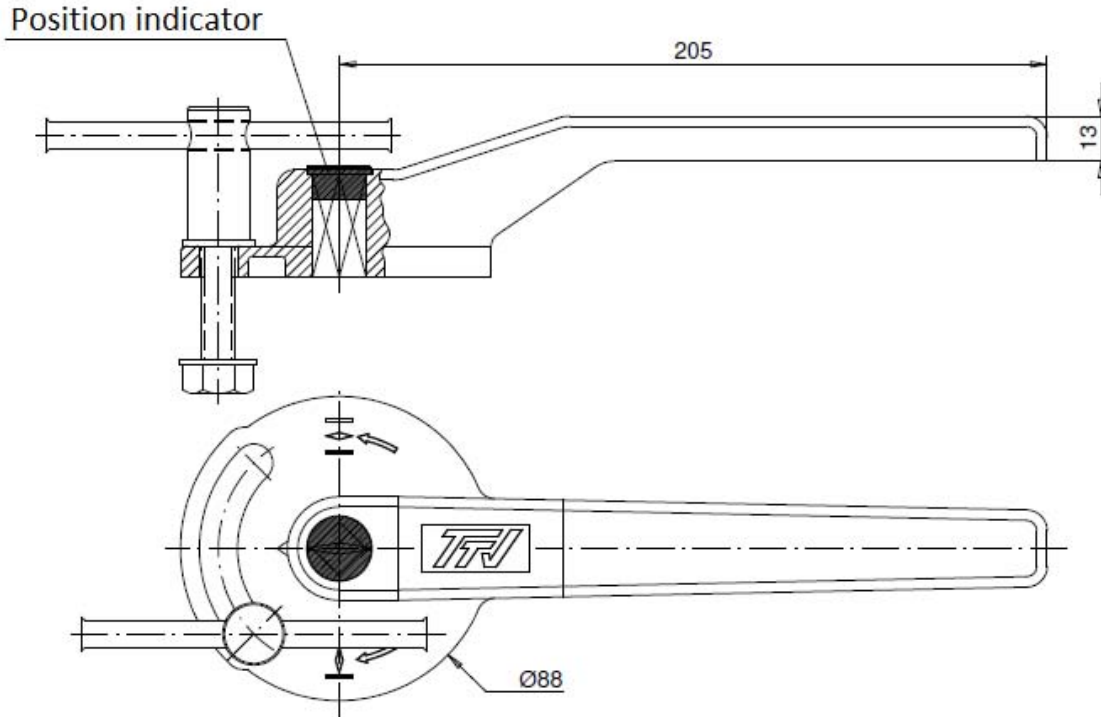


DN	32-100	125-200
E	205	330
H	57	70
Ø P	88	105

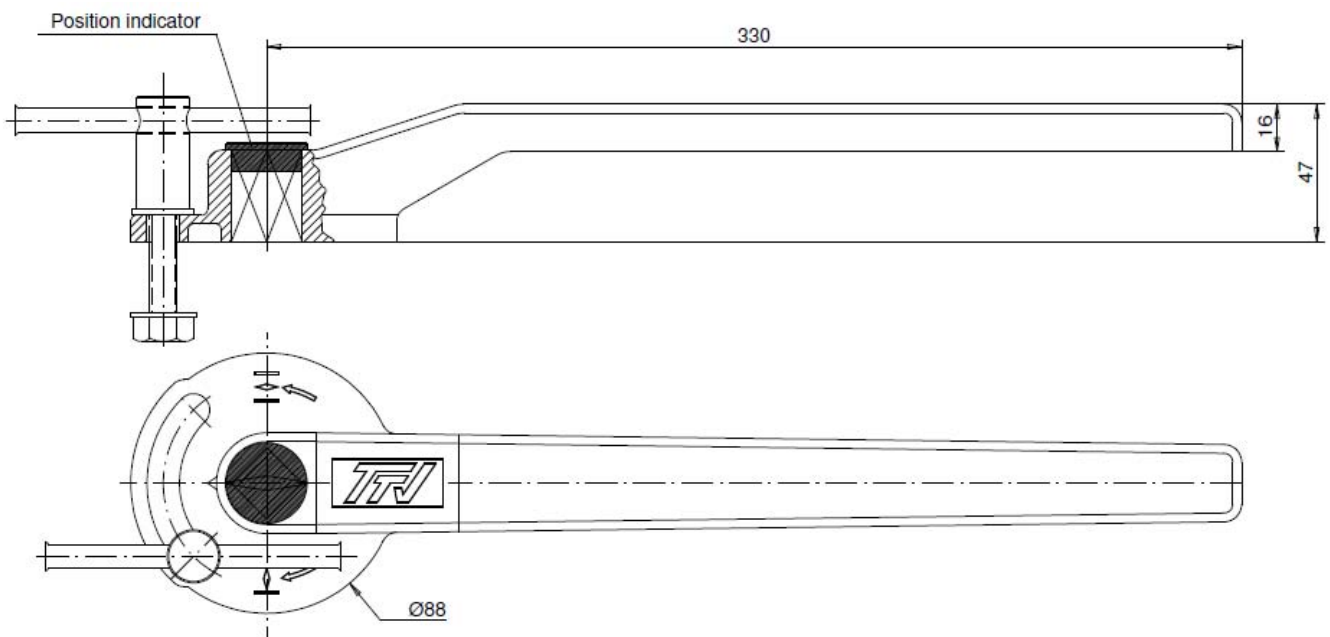
**PTFE LUG BUTTERFLY VALVE EXCELLENCE RANGE**

ASTM A351 CF8M STAINLESS STEEL LEVERS SIZE ( in mm ) ( ON REQUEST ) :

**DN 40 - 100**



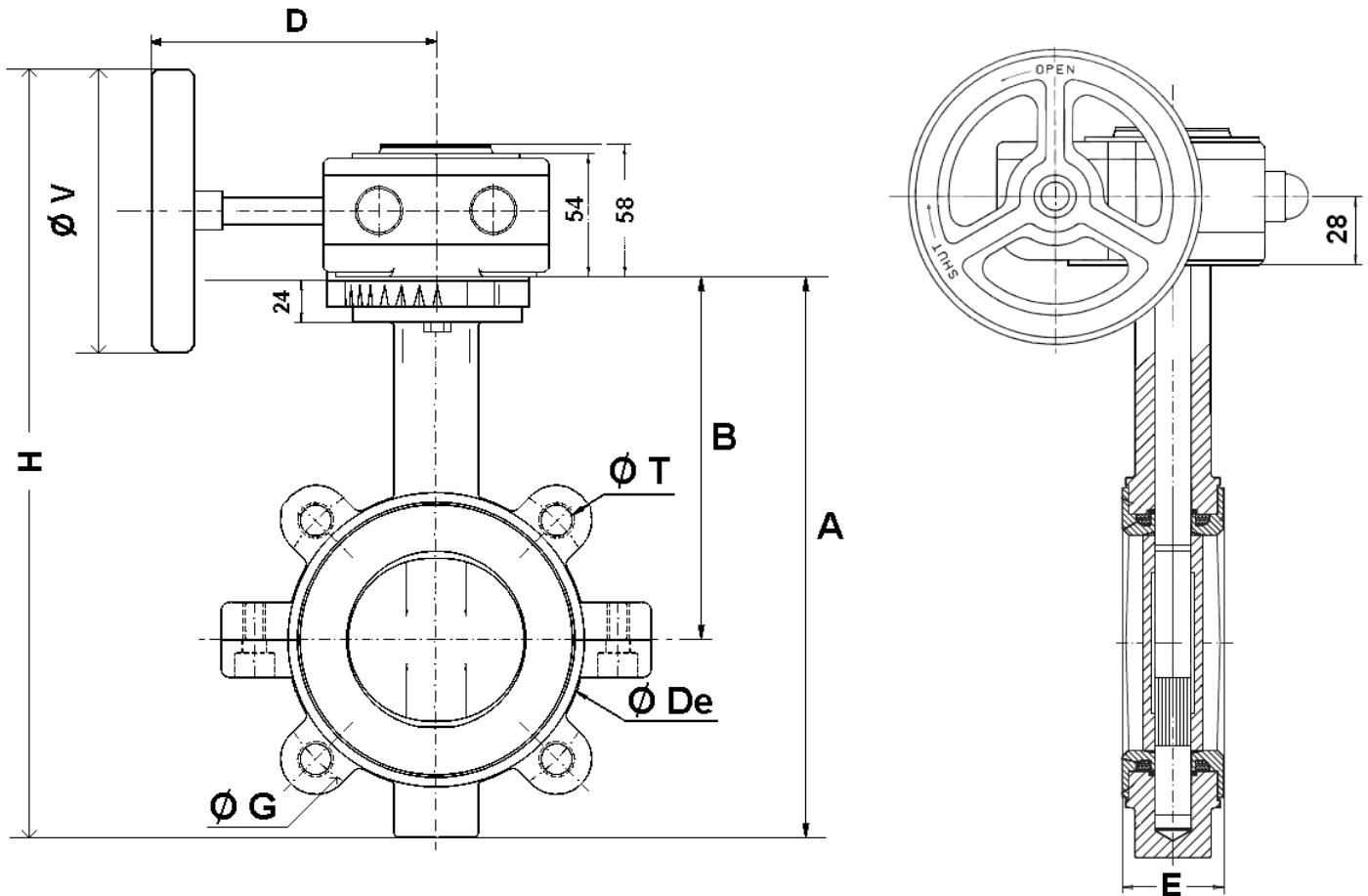
**DN 125 - 200**



**PTFE LUG BUTTERFLY VALVE EXCELLENCE RANGE**

**SIZE PN16 ( in mm ) :**

**Valves with gear box DN 40 – 65 :**

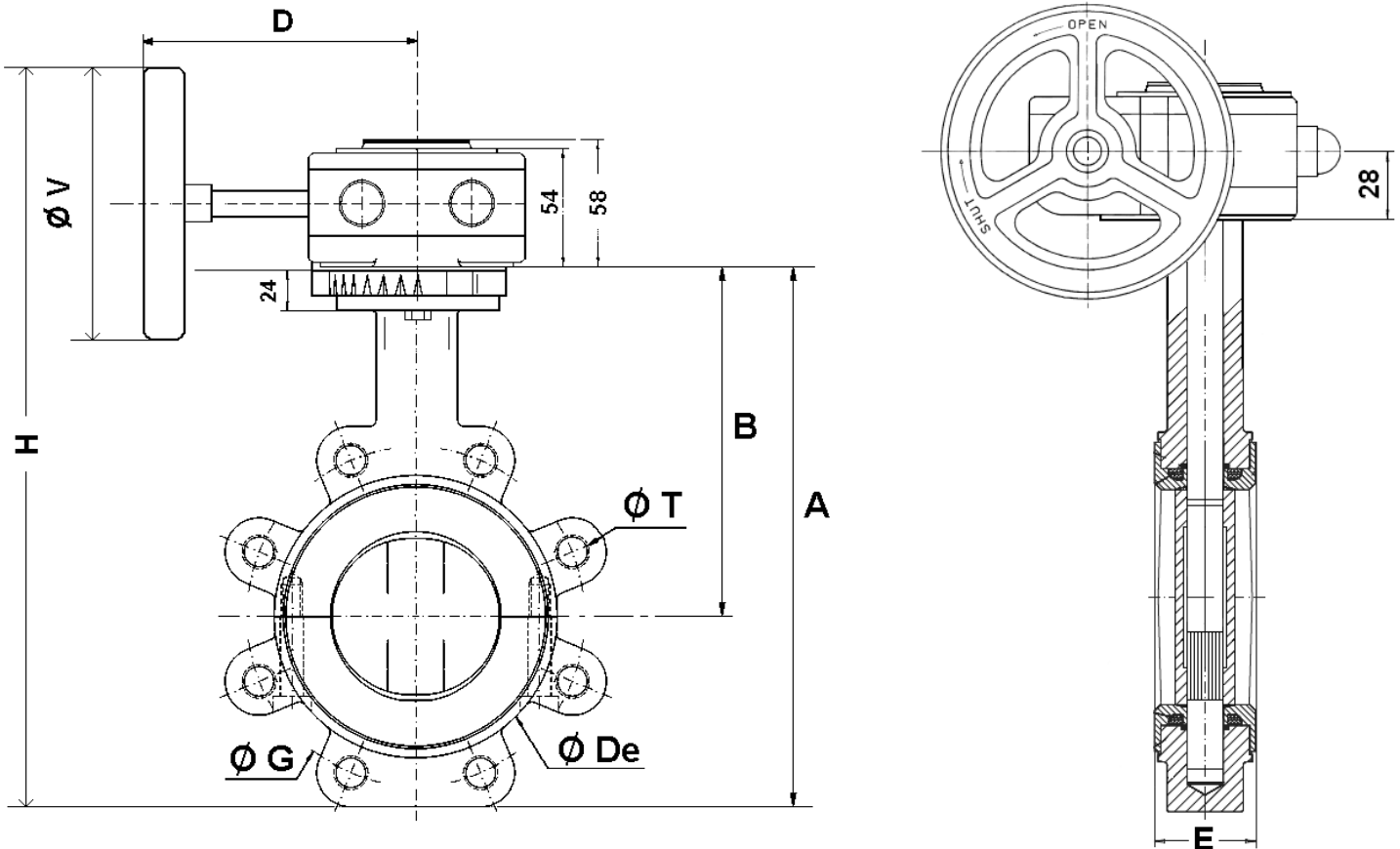


DN	40	50	65
A	205	226	242
B	140	156	161
Ø De	82	103	116
D	120	120	120
E	33	43	46
H	304	326	341
Ø G	110	125	145
Ø T	4 x M16	4 x M16	4 x M16
Ø V	140	140	140
Weight ( Kg )	4.35	5.35	6.35

**PTFE LUG BUTTERFLY VALVE EXCELLENCE RANGE**

SIZE PN10 ( in mm ) :

Valves with gear box DN 80 – 200 :

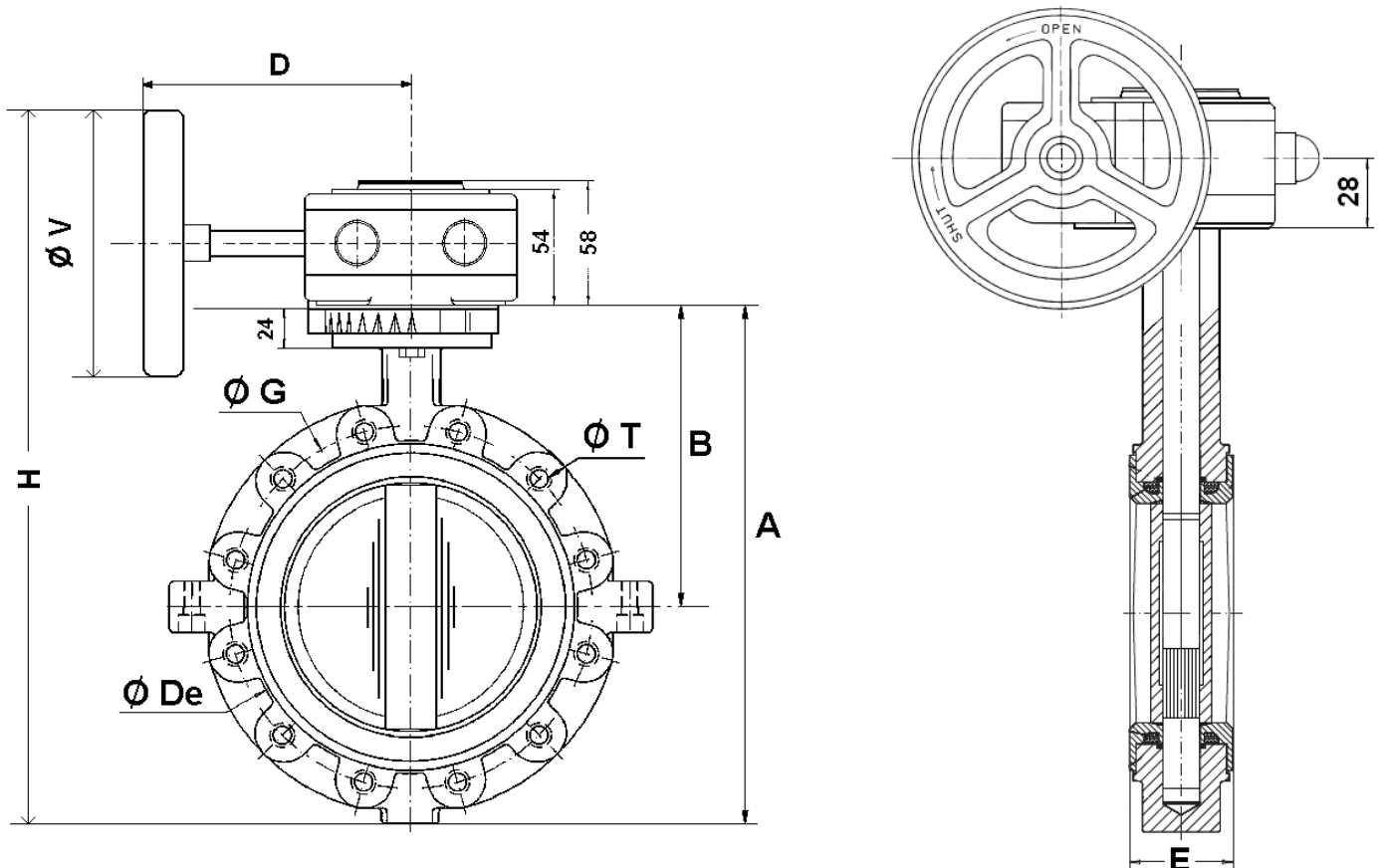


DN	80	100	125	150	200
A	257	288	325	346	437
B	167	184	207	215	257
Ø De	134	153	185	208	270
D	120	120	136	136	136
E	47	52	56	56	60
H	364	392	452	477	566
Ø G	160	180	210	240	295
Ø T	8 x M16	8 x M16	8 x M16	8 x M20	8 x M20
Ø V	140	140	200	200	200
Weight ( Kg )	7.85	9.35	12.75	14.75	23.75

**PTFE LUG BUTTERFLY VALVE EXCELLENCE RANGE**

SIZE PN10 ( in mm ) :

Valves with gear box DN 250 – 300 :

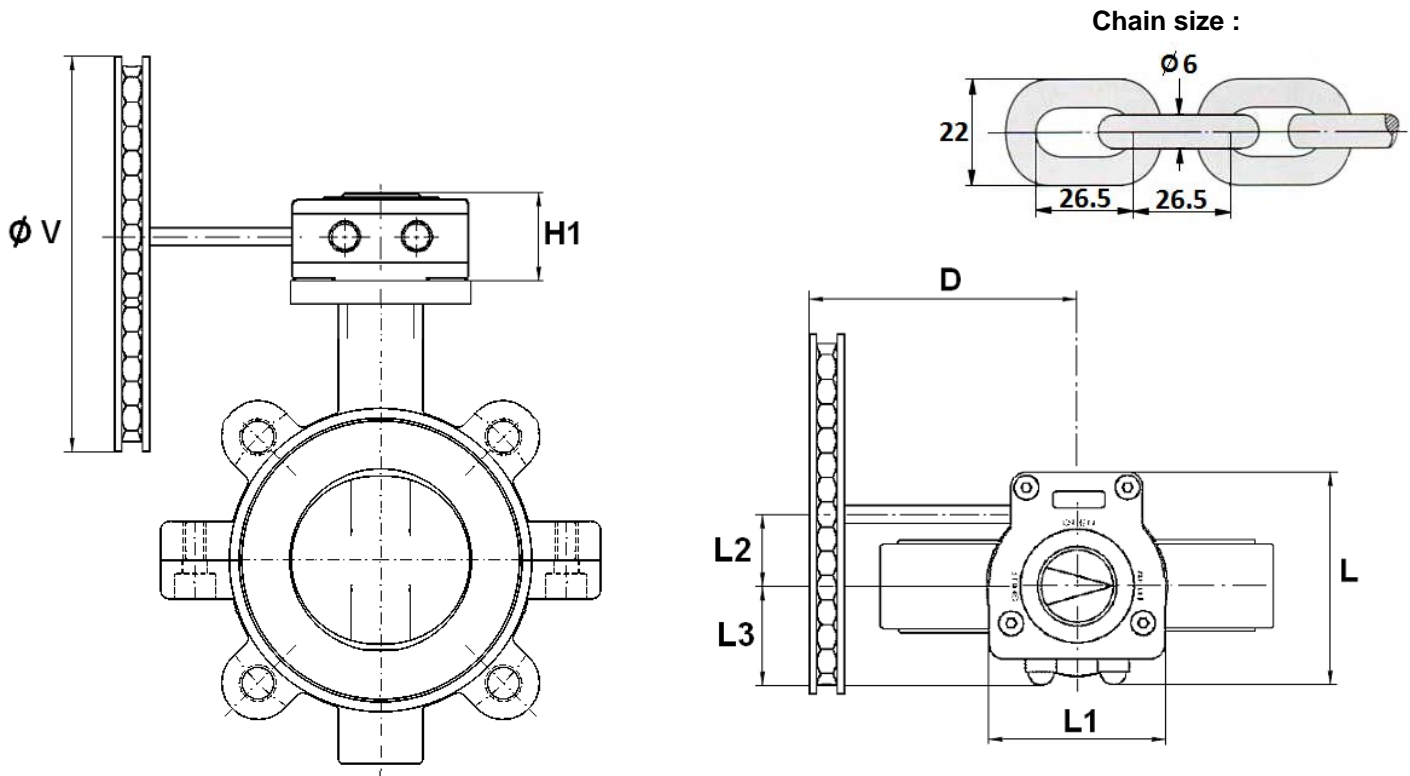


DN	250	300
A	448	514
B	248	280
Ø De	320	373
D	223	223
E	68	78
H	634	701
Ø G	350	400
Ø T	12 x M20	12 x M20
Ø V	300	300
Weight ( Kg )	41	62

**PTFE LUG BUTTERFLY VALVE EXCELLENCE RANGE**

SIZE PN16 ( in mm ) :

Valves with chain gear box DN 40 – 65 :



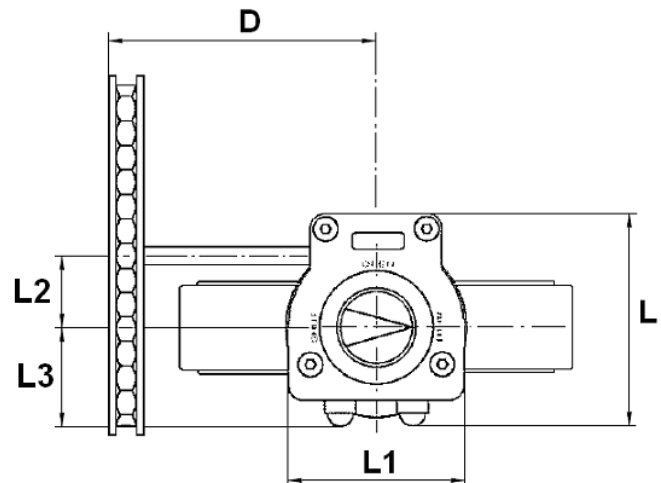
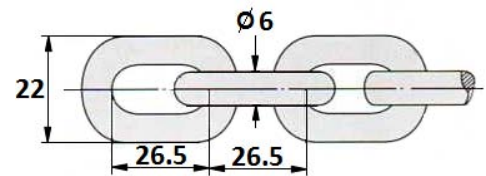
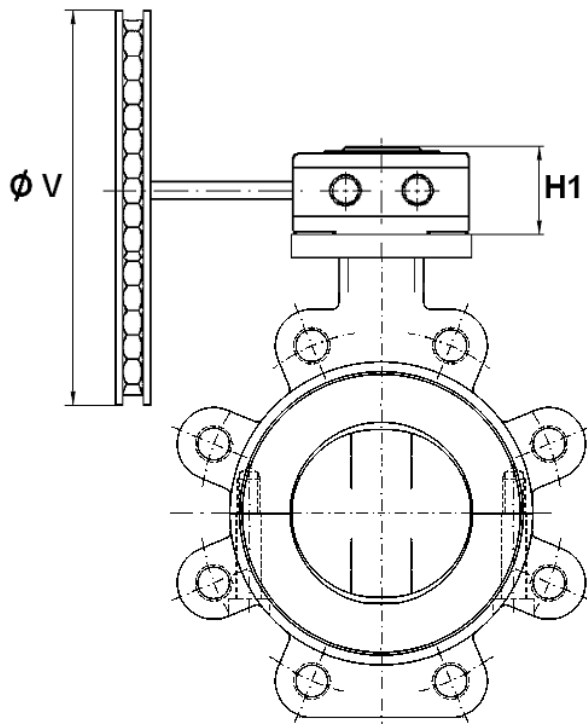
DN	40	50	65
D	120	120	120
H1	58	58	58
L	128	128	128
L1	100	100	100
L2	50	50	50
L3	56	56	56
ø V	160	160	160
Weight ( Kg )	5.35	6.35	7.35

**PTFE LUG BUTTERFLY VALVE EXCELLENCE RANGE**

SIZE PN10 ( in mm ) :

Valves with chain gear box DN 80 – 200 :

Chain size :



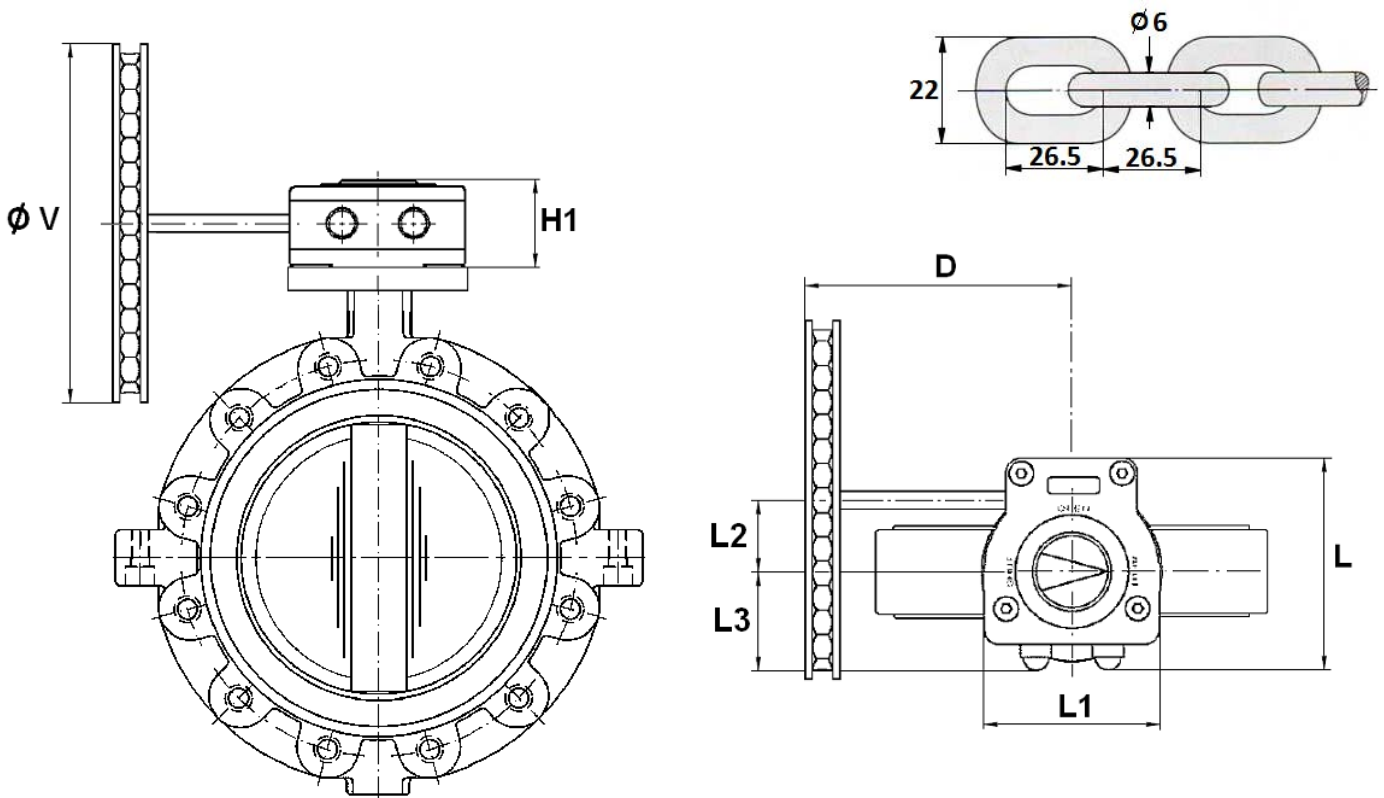
DN	80	100	125	150	200
D	120	120	126	126	126
H1	58	58	58	58	58
L	128	128	128	128	128
L1	100	100	100	100	100
L2	50	50	50	50	50
L3	56	56	56	56	56
ø V	160	160	210	210	210
Weight ( Kg )	8.85	10.35	13.75	15.75	24.75

**PTFE LUG BUTTERFLY VALVE EXCELLENCE RANGE**

SIZE PN10 ( in mm ) :

Valves with chain gear box DN 250 – 300 :

Chain size :



DN	250	300
D	214	214
H1	74	74
L	175	175
L1	142	142
L2	61	61
L3	80	80
Ø V	300	300
Weight ( Kg )	43.8	64.8

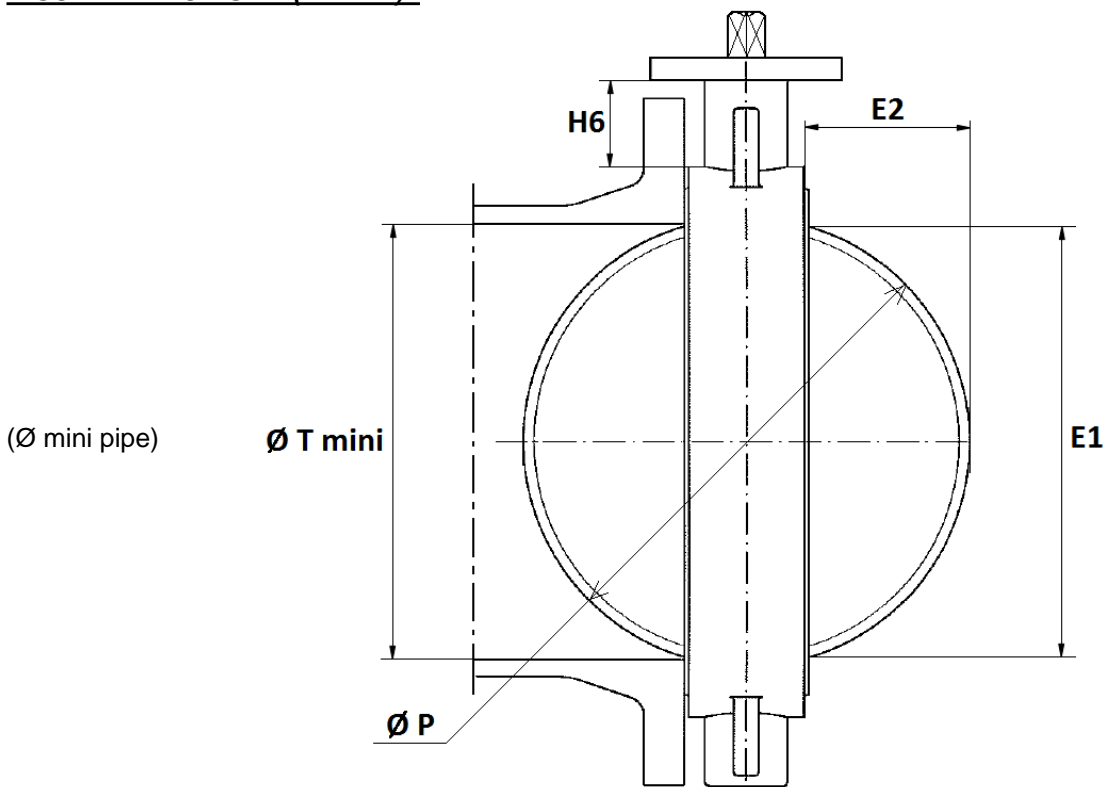


**PTFE LUG BUTTERFLY VALVE EXCELLENCE RANGE**

GEARBOX SPECIFICATIONS :

DN	32/50	65	80/100	125/150	200	250	300
Ref.	1197050	1197065	1197100	1197150	1197200	1197250	1197300
Ratio factor	37 : 1	37 : 1	37 : 1	37 : 1	37 : 1	36 : 1	36 : 1
Number of cycles for opening or closing	9.25	9.25	9.25	9.25	9.25	9	9
Input torque ( Nm )	12.5	12.5	12.5	12.5	12.5	23	23
Output torque ( Nm )	300	300	300	300	300	675	675

DISC AND NECK SIZE ( in mm ) :

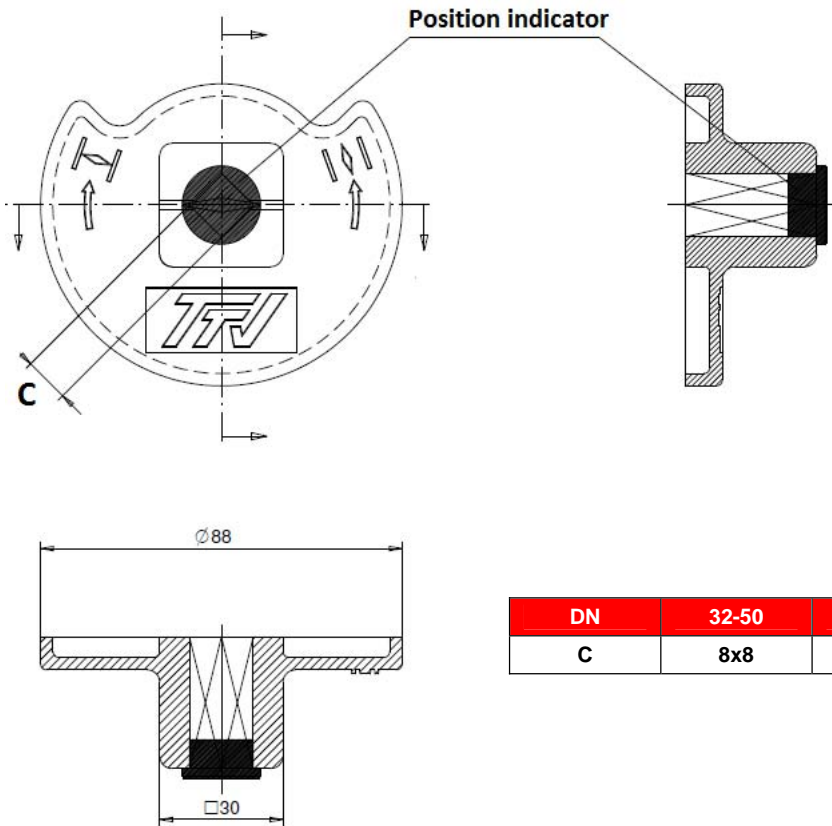


DN	32/40	50	65	80	100	125	150	200	250	300
E1	23	24.5	46	65	85	109	136	188	238	289
E2	3.5	3.5	9.5	17	24	33.5	45.5	69	90	110.5
H6	76	82	80	80	88	93	89	99	71	76
Ø T mini	26	27.5	49	68	88	112	139	191	241	292
Ø P	40	50	65	80	100	123	147	198	248	299

**PTFE LUG BUTTERFLY VALVE EXCELLENCE RANGE**

SIZE ( in mm ) :

Square lever for special key ( 30x30 mm ) :



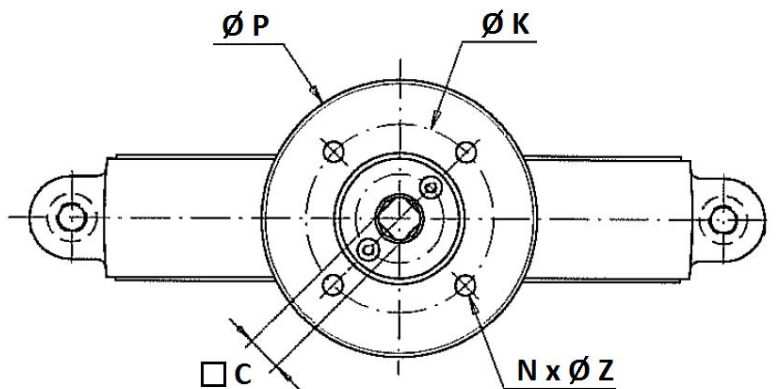
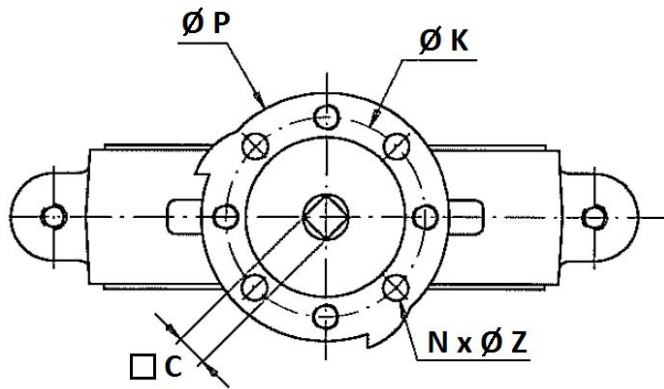
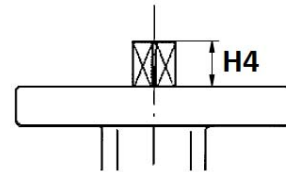
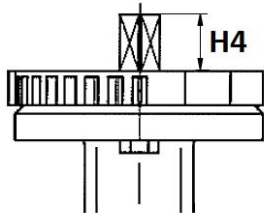
DN	32-50	65	80-100	125-150	200
C	8x8	9x9	11x11	14x14	17x17

**PTFE LUG BUTTERFLY VALVE EXCELLENCE RANGE**

ISO MOUNTING PAD AND STEM SIZE ( in mm ) :

**DN 40 - 200**

**DN 250 – 300**



DN	32/40	50	65	80	100	125	150	200	250	300
H4	14	14	16	16	20	20	20	24	24	24
C	8	8	9	11	11	14	14	17	19	22
Ø K	70	70	70	70	70	70	70	70	102	102
ISO	F07	F07	F07	F07	F07	F07	F07	F07	F10	F10
N x Ø Z	4 x 9	4 x 9	4 x 9	4 x 9	4 x 9	4 x 9	4 x 9	4 x 9	4 x 11	4 x 11
Ø P	88	88	88	88	88	105	105	105	148	148

## **PTFE LUG BUTTERFLY VALVE EXCELLENCE RANGE**

### STANDARDS :

Fabrication according to ISO 9001:2008

Designing according to ISO 10631

DIRECTIVE 97/23/CE : CE N° 0038

Risk category III module H

Pressure tests according to ISO 5208, range A

Between flanges according to EN 1092-1 PN10/16

ISO 5211 mounting pad

Length according to ISO 5752 short series 20, EN 558 series 20 ( NF 29305 ), BS 5155 Wafer short/medium, DIN 3202 part 3, series K1

ATEX Group II Category 2 G/2D Zone 1 & 21 Zone 2 & 22 ( optional marking )

**FDA PTFE** seat

PTFE seat compatible with foodstuffs according to the rule **CE 1935/2004 (article 3)**

**ADVICE :** Our opinion and our advice are not guaranteed and SFERACO shall not be liable for the consequences of damages. The customer must check the right choice of the products with the real service conditions.

## INSTALLATION INSTRUCTIONS

### GENERAL GUIDELINES :

Ensure that the valves to be used are appropriate for the conditions of the installation (type of fluid, pressure and temperature).

Be sure to have enough valves to be able to isolate the sections of piping as well as the appropriate equipment for maintenance and repair.

Ensure that the valves to be installed are of correct strength to be able to support the capacity of their usage.

**Installation of all circuits should ensure that their function can be automatically tested on a regular basis (at least two times a year).**

### INSTALLATION INSTRUCTIONS :

**Before installing the valves, clean and remove any objects from the pipes** (in particular bits of sealing and metal) which could obstruct and block the valves.

**Ensure that both connecting pipes either side of the valve (upstream and downstream) are aligned (if they're not, the valves may not work correctly).**

**Make sure that the two sections of the pipe (upstream and downstream) match, the valve unit will not absorb any gaps. Any distortions in the pipes may affect the tightness of the connection, the working of the valve and can even cause a rupture. To be sure, place the kit in position to ensure the assembling will work.**

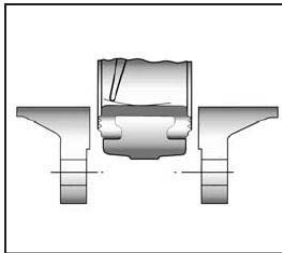
## PTFE LUG BUTTERFLY VALVE EXCELLENCE RANGE

### INSTALLATION INSTRUCTIONS ( SUITE ):

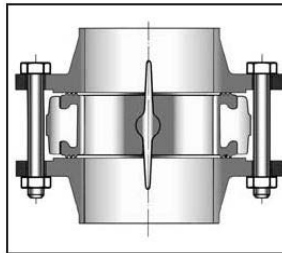
**If sections of piping do not have their final support in place, they should be temporarily fixed. This is to avoid unnecessary strain on the valve.**

The valve must be inserted between flanges with disc half opened but the disc must not overpass the valve thickness. Position the bolts to keep centered the valve. Then open fully the valve and tighten the bolts.

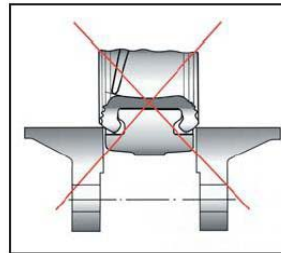
**See graph under.**



Half open valve introduction



Complete opened disc valves  
when screw tightening



Tighten the bolts in cross.

The disc must move easily inside the pipe.

Valves must be opened during cleaning operation.

Tests must be done with a cleaned pipe.

Tests must be done with opened valve. Test pressure must not be higher than the valve specification according to ISO 5208.

Then open slowly the valve.

**Do not mount butterfly valves with stainless steel pressed collars and turning flanges without strias.**

**And not on flat face flanges without strias ( example : painted cast iron fittings )**

### MAINTENANCE :

We recommend to operate fully the valve 1 to 2 times per year.

During maintenance operation, ensure that the pipe isn't under pressure, that there's no fluid in the pipe and that the valve is isolated. If there's a fluid in the pipe, evacuate it. Ensure that there are no risks due to the temperature or the fluid ( like acids ). If the fluid is corrosive, inert the installation before maintenance operation.