

FS 20 STAINLESS STEEL FLOW SWITCH

FEATURES

The FS 20 flow switch indicates the absence or presence of flow inside piping. Its robust construction makes possible its use on aggressive fluids, within a wide range of temperatures, and at high pressures. The IP65 protection class provides operation in particularly humid or dusty environments. The reversible switch is used to making contact with or the cut-off, of any electrical contact device within the range of the intervention flow-rate.

AVAILABLE MODELS

1/2" to 1" diameters

G threaded connection

Electrical connection through DIN 43650 PG 9 switch

LIMITS OF USE

Electrical protection	IP 65
Fluid WP:	70 bar
Fluid WT°:	-20°C / +150°C

IP
65



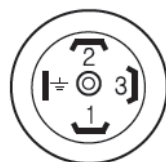
HYDRAULIC FEATURES

DN	Flow-rate range for releasing at rise (litres/h)	Flow-rate range for releasing at fall (litres/h)
1/2"	380 - 460	150 - 210
3/4"	550 - 610	140 - 240
1"	930 - 1010	750 - 780

ELECTRICAL FEATURES

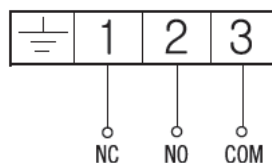
Type of switch	SPDT
Cut-off voltage	3A@250V AC - 3A@30V CC - 0.4A@125V cc

WIRING DIAGRAM



DIN

3-Wire



Information given as an indication only, and subject to possible modifications

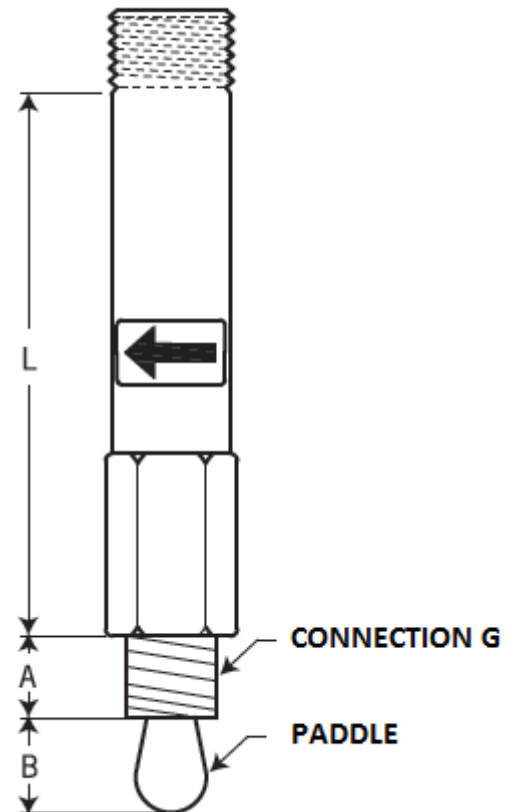
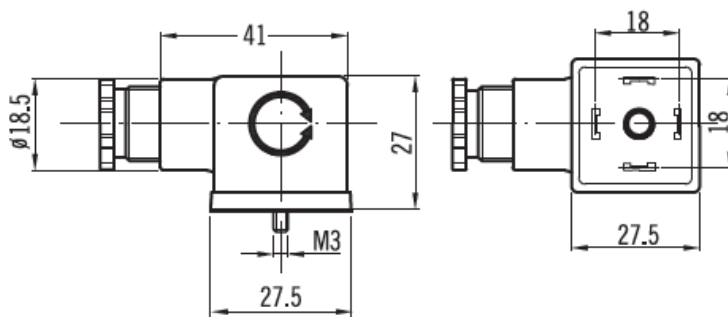
FS 20 STAINLESS STEEL FLOW SWITCH

CONSTRUCTION

No.	Name	Material
1	Body	AISI 316 SS
2	Pallet	AISI 316 SS
3	Connector	Thermoplastic

DIMENSIONS (mm)

DN	L	A	B
1/2"	90	19	27
3/4"	90	20	32
1"	90	21	42

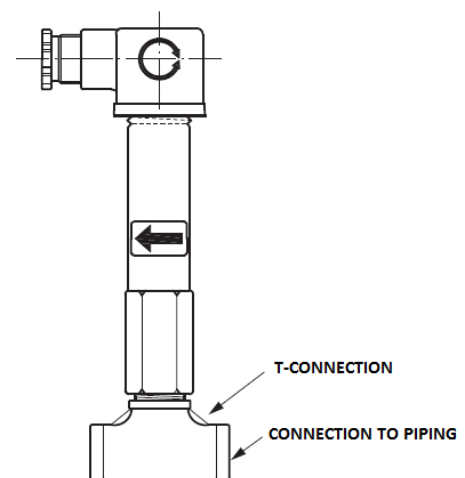


INSTALLATION

Install the flow switch on a tap off, perpendicular to the piping.

Comply with the fluid direction indicated by the arrow on the body.

Example of assembly on a TEE fitting (opposite).



Information given as an indication only, and subject to possible modifications