

DIN, SMS, CLAMP

AISI 304L / AISI 316L

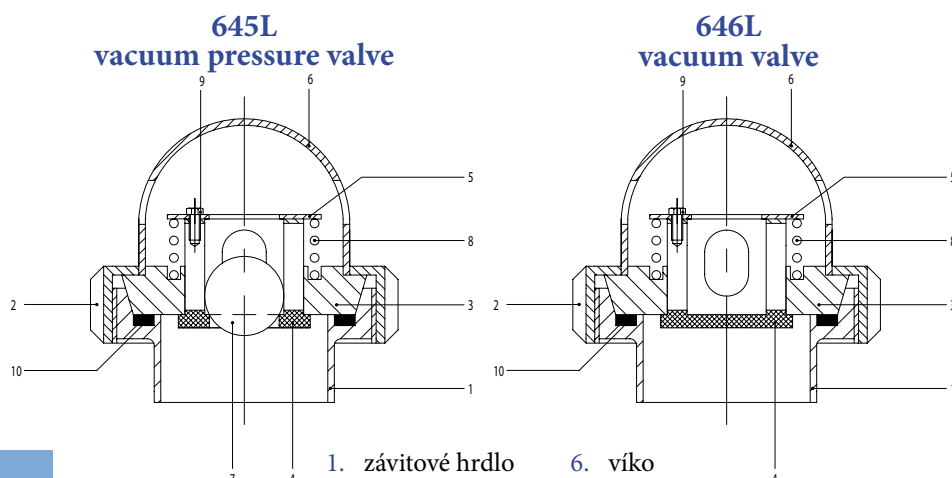
VACUUM VALVES

VACUUM PRESSURE VALVES




Technical details cod. 645L and 646L:

- high strength construction from solid stainless steel block
- opening pressure: fixed 0,02 bar
- vacuum pressure: fixed 0,01 bar

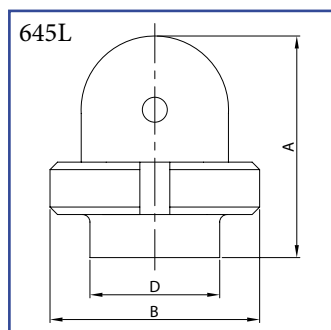


- | | |
|-----------------------|--------------------|
| 1. závitové hrdlo | 6. víko |
| 2. matice | 7. kulička |
| 3. sedlo | 8. vakuová pružina |
| 4. blokovací zařízení | 9. šroub |
| 5. horní disk | 10. těsnění |

Valve size	Capacity
DN 40 (1 1/2")	480 l/h
DN 50 (2")	1200 l/h
DN 65 (2 1/2")	3000 l/h

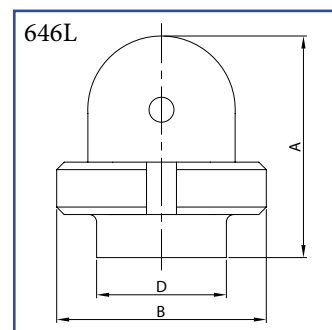
Pos.	Code	Norm	1 1/2" 38	D40 40	2" 51	D50 52	2 1/2" 63	D65 70	Material
1	117	D	38	40	51	52	63	70	AISI 304L
2	121	D	40	40	50	50	65	65	AISI 304L
3	645		38/40	38/40	51/52	51/52	63/70	63/70	AISI 304L
4	645		38/40	38/40	51/52	51/52	63/70	63/70	T/A
5	645		38/40	38/40	51/52	51/52	63/70	63/70	AISI 304
6	645		38/40	38/40	51/52	51/52	63/70	63/70	AISI 304
7	645		38/40	38/40	51/52	51/52	63/70	63/70	AISI 304
8	645		38/40	38/40	51/52	51/52	63/70	63/70	AISI 304
9	TCCE		M3x6	M3x6	M3x6	M3x6	M3x6	M3x6	AISI 304
10	131	D	40	40	50	50	65	65	N

Vacuum pressure valve DIN
for welding
AISI 304L



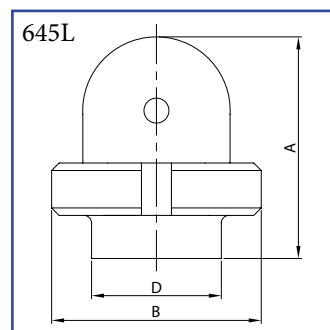
DN	A	B	D	Kg
40	46,0	92,0	40,0	0,730
52	55,0	112,0	52,0	1,300
70	70,0	138,0	70,0	1,850

Vacuum valve DIN
for welding
AISI 304L



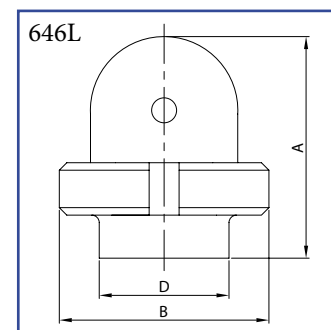
DN	A	B	D	Kg
40	46,0	92,0	40,0	0,730
52	55,0	112,0	52,0	1,300
70	70,0	138,0	70,0	1,850

Vacuum pressure valve SMS
for welding
AISI 304L



DN	A	B	D	Kg
38	46,0	92,0	38,1	0,700
51	55,0	112,0	50,8	1,270
63	70,0	138,0	63,5	1,800

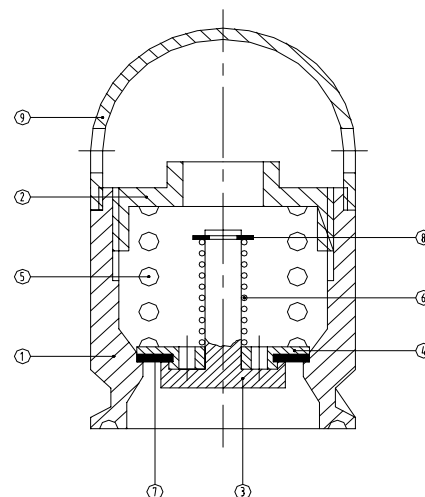
Vacuum valve SMS
for welding
AISI 304L



DN	A	B	D	Kg
38	46,0	92,0	38,1	0,700
51	55,0	112,0	50,8	1,270
63	70,0	138,0	63,5	1,800


Technical details cod. K64VP and W64VP:

- opening pressure: adjustable 0,2 - 2,2 bars
- vacuum pressure: fixed - 0,1 bars



1. valve casing
2. adjusting cap
3. head seal
4. diaphragm
5. pressure spring
6. vacuum spring
7. seal
8. snap ring
9. cap

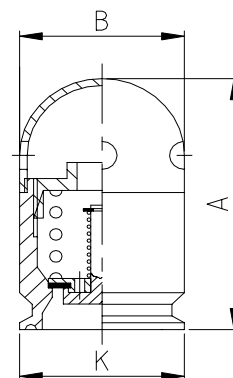
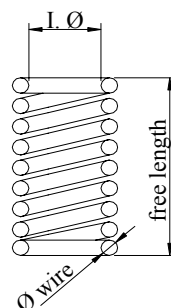
Pressure spring:

Valve size	Spring code	I. Ø	Ø wire	free length	No. coils
1 1/2"	K64VP38.05	23 mm	3 mm	34 mm	5 1/2
2"	K64VP51.05	34 mm	4,5 mm	50 mm	5
2 1/2"	K64VP63.05	44 mm	5,5 mm	61 mm	5

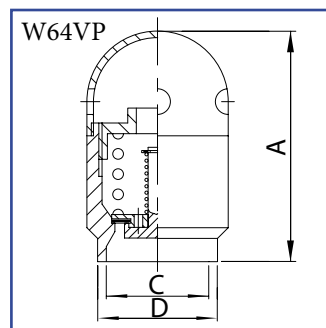
Vacuum spring

Valve size	Spring code	I. Ø	Ø wire	free length	No. coils
1 1/2"	K64VP38.06	8 mm	0,55 mm	25 mm	13
2"	K64VP51.06	10 mm	0,6 mm	40 mm	8 1/2
2 1/2"	K64VP63.06	12 mm	0,7 mm	47 mm	8

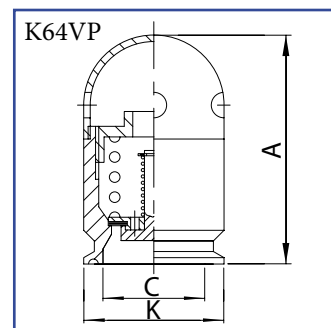
Pos.	Code	1 1/2" 38	2" 51	2 1/2" 63	Material
1	K64VP	38			4L
1	K64VP		51		4L
1	K64VP			63	4L
2	K64VP	38			4L
2	K64VP		51		4L
2	K64VP			63	4L
3	K64VP	38			4L
3	K64VP		51		4L
3	K64VP			63	4L
4	K64VP	38			4L
4	K64VP		51		4L
4	K64VP			63	4L
5	K64VP	38			4
5	K64VP		51		4
5	K64VP			63	4
6	K64VP	38			4
6	K64VP		51		4
6	K64VP			63	4
7	K64VP	38			S
7	K64VP		51		S
7	K64VP			63	S
8	K64VP	38			4
8	K64VP		51		4
8	K64VP			63	4
9	K64VP	38			4L
9	K64VP		51		4L
9	K64VP			63	4L


Dimensions:

DN	A	B	K	
1 1/2"	38	78,0	48,0	50,5
2"	51	102,0	62,0	64,0
2 1/2"	63	113,0	80,0	77,5

 Vacuum pressure valve
for welding
AISI 304L


DN	A	C	D	Kg	
1 1/2"	38	80,0	34,8	38,1	0,44
2"	51	102,0	47,5	50,8	0,89
2 1/2"	63	113,0	60,2	63,5	1,50

 Vacuum pressure valve
with CLAMP end
AISI 304L


DN	A	C	K	Kg	
1 1/2"	38	80,0	34,8	50,5	0,45
2"	51	102,0	47,5	64,0	0,90
2 1/2"	63	113,0	60,2	77,5	1,65