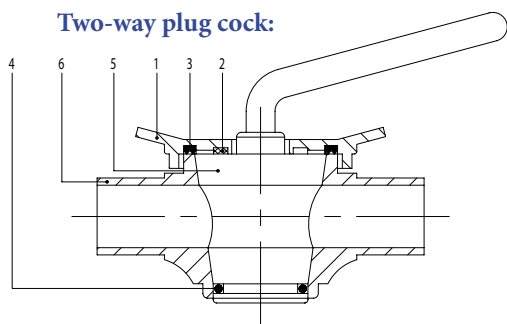




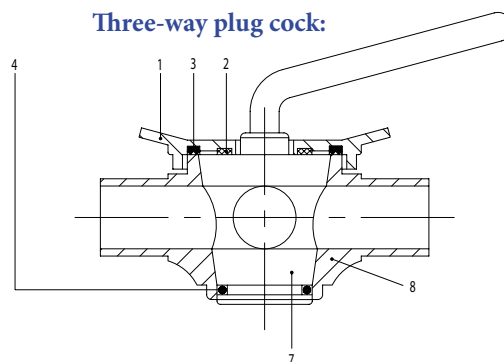
- Made from sections complete with couplings, press-forged or hot-rolled and solution heat-treated.
- Plugs coated in galvanic bath with very hard and thick chrome deposit.
- High degree of taper in the couplings to reduce specific rotation pressure of plugs.
- Standard finish: 120 grain external polishing and internal glazing. Other finishes on request.
- Maximum operating pressure: 4 bars.

Two-way plug cock:



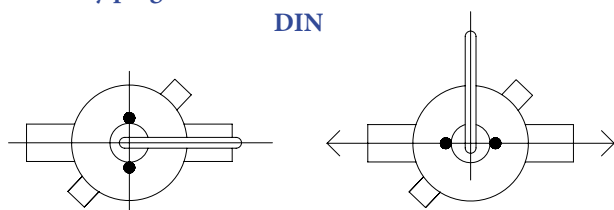
1. Cover
2. PTFE ring
3. W seal
4. OR seal ring
5. Two-way plug
6. Two-way plug casing

Three-way plug cock:

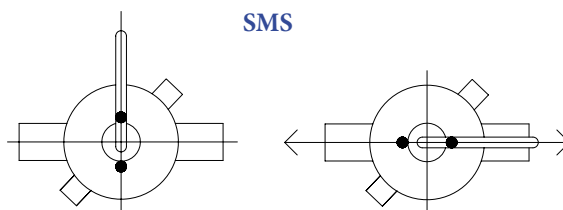


Two-way plug cock:

DIN

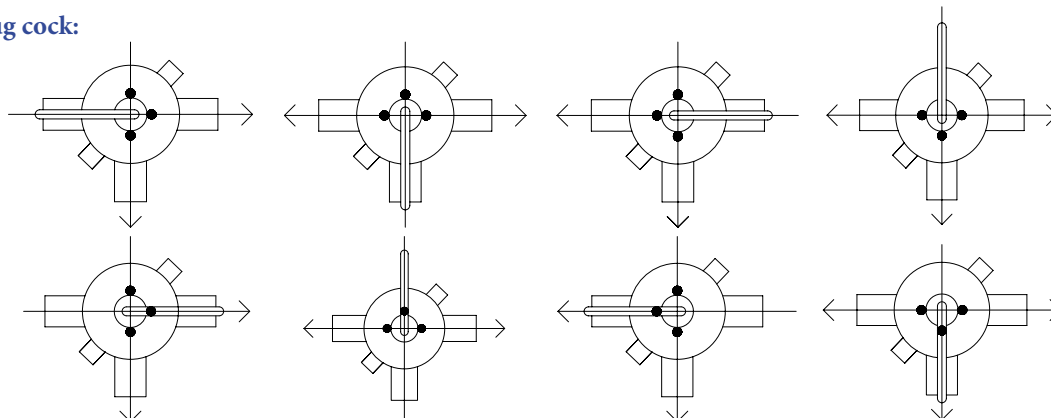


SMS



Three-way plug cock:

DIN

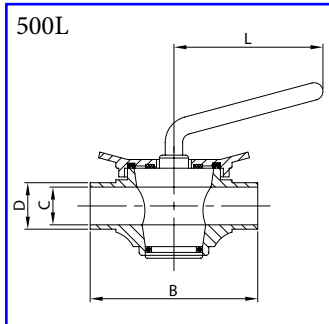


SMS

No.	Code	Norm	1" 25	D 25 28	D 32 34	1 1/2" 38	D 40 40	2" 51	D 50 52	2 1/2" 63	D 65 70	3" 76	D 80 85	4" 101	D 100 101	Mat.
1	500		25/28	25/28	34/40	34/40	34/40	51/52	51/52	63/70	63/70	76/85	76/85	101	101	4L/6L
2	500		25/28	25/28	34/40	34/40	34/40	51/101	51/101	51/101	51/101	51/101	51/101	51/101	51/101	PTFE
3	500		25/28	25/28	34/40	34/40	34/40	51/52	51/52	63/70	63/70	76/85	76/85	101	101	EPDM
4	OR		4106	4106	153	153	153	162	162	6312	6312	185	185	204	204	EPDM
5	500		25/28	25/28	34/40	34/40	34/40	51/52	51/52	63/70	63/70	76/85	76/85	101	101	4L/6L
6	500	L	25	28	34	38	40	51	52	63	70	76	85	101	101	4L/6L
7	510		25/28	25/28	34/40	34/40	34/40	51/52	51/52	63/70	63/70	76/85	76/85	101	101	4L/6L
8	510	L	25	28	34	38	40	51	52	63	70	76	85	101	101	4L/6L

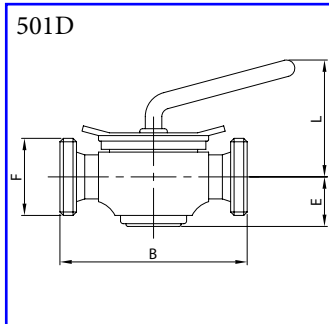


Plug cock 2-way
plain ends
AISI 304L, AISI 316L



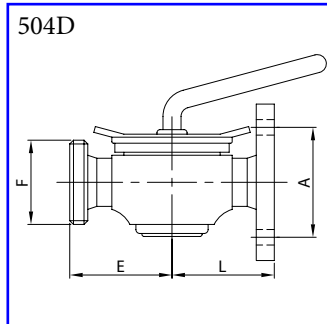
DN	B	C	D	L	Kg
28	125	25	28	100	1,95
34	160	31	34	115	3,05
40	160	37	40	115	4,25
52	170	49	52	140	6,05
70	200	66	70	160	12,6
85	230	81	85	160	16,1

Plug cock 2-way
male ends
AISI 304L, AISI 316L



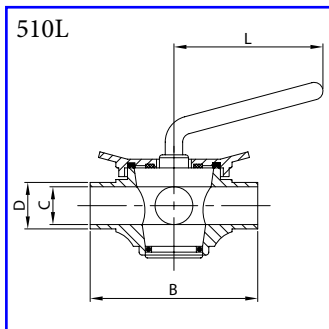
DN	B	E	F	L	Kg
25	125	38	52-6	90	2,10
32	160	45	58-6	117	3,40
40	160	45	65-6	117	4,70
50	170	55	78-6	122	6,60
65	200	68	95-6	142	13,35
80	230	71	110-4	154	17,35

Plug cock 2-way
male end / flange
AISI 304L, AISI 316L



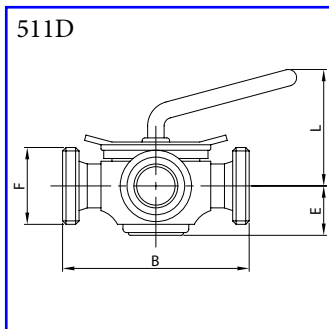
DN	A	E	F	L	Kg
25	75	62,5	52-6	72,0	2,60
32	90	80	58-6	89,5	4,15
40	100	80	65-6	89,5	5,50
50	110	85	78-6	94,5	7,40
65	130	100	95-6	109,5	14,30
80	150	115	110-4	124,5	18,80

Plug cock 3-way
plain ends
AISI 304L, AISI 316L



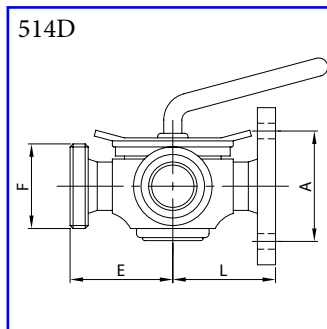
DN	B	C	D	L	Kg
28	125	25	28	100	2,05
34	160	31	34	115	4,50
40	160	37	40	115	4,50
52	170	49	52	140	6,10
70	200	66	70	160	12,4
85	230	81	85	160	17,1

Plug cock 3-way
male ends
AISI 304L, AISI 316L



DN	B	E	F	L	Kg
25	125	38	52-6	90	2,15
32	160	45	58-6	117	5,00
40	160	45	65-6	117	5,00
50	170	55	78-6	122	6,75
65	200	68	95-6	142	13,35
80	230	71	110-4	154	17,60

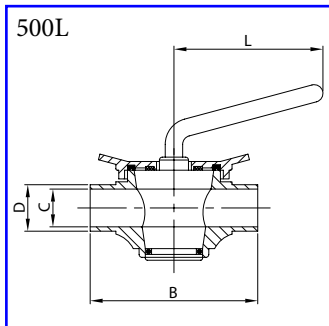
Plug cock 3-way
male end / male end / flange
AISI 304L, AISI 316L



DN	A	E	F	L	Kg
25	75	62,5	52-6	72,0	2,65
32	90	80	58-6	89,5	6,00
40	100	80	65-6	89,5	6,310
50	110	85	78-6	94,5	7,80
65	130	100	95-6	109,5	14,7
80	150	115	110-4	124,5	19,6

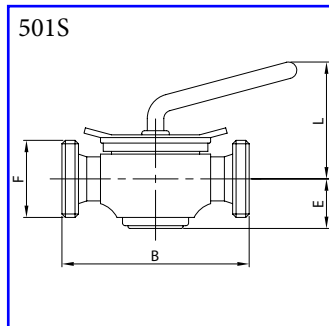


Plug cock 2-way
plain ends
AISI 304L, AISI 316L



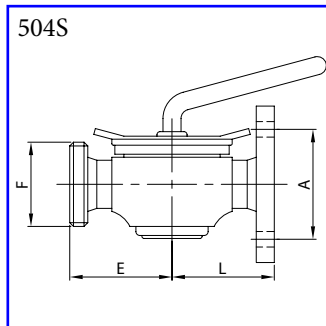
DN	B	C	D	L	Kg
25	125	22,4	25,4	100	1,95
38	160	35,1	38,1	115	4,25
51	170	47,8	50,8	140	6,05
63	200	60,5	63,5	160	12,60
76	230	72,9	76,2	160	16,15

Plug cock 2-way
male ends
AISI 304L, AISI 316L



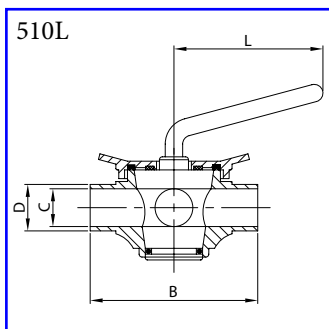
DN	B	E	F	L	Kg
25	125	38	40-6	90	1,95
38	160	45	60-6	117	4,25
51	170	55	70-6	122	6,45
63	200	68	85-6	142	13,65
76	230	71	98-6	154	18,40

Plug cock 2-way
male end / male end / flange
AISI 304L, AISI 316L



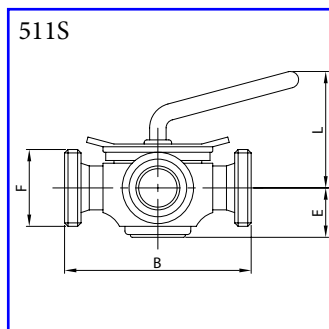
DN	A	E	F	L	Kg
25	75	62,5	40-6	72,0	2,60
38	90	80	60-6	89,5	5,45
51	110	85	70-6	94,5	7,30
63	130	100	85-6	109,5	15,0
76	150	115	98-6	124,5	18,8

Plug cock 3-way
plain ends
AISI 304L, AISI 316L



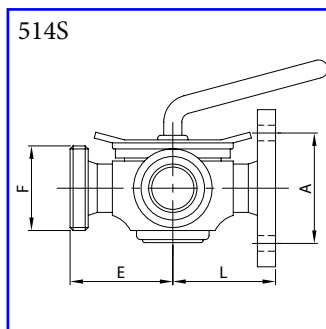
DN	B	C	D	L	Kg
25	125	22,4	25,4	100	1,95
38	160	35,1	38,1	115	4,25
51	170	47,8	50,8	140	6,05
63	200	60,5	63,5	160	12,60
76	230	72,9	76,2	160	16,15

Plug cock 3-way
male ends
AISI 304L, AISI 316L



DN	B	E	F	L	Kg
25	125	38	40-6	90	1,95
38	160	45	60-6	117	4,25
51	170	55	70-6	122	6,45
63	200	68	85-6	142	13,65
76	230	71	98-6	154	18,40

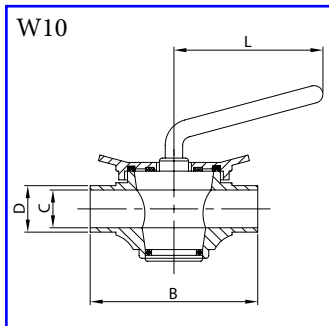
Plug cock 3-way
male end / male end / flange
AISI 304L, AISI 316L



DN	A	E	F	L	Kg
25	75	62,5	40-6	72,0	2,60
38	90	80	60-6	89,5	5,45
51	110	85	70-6	94,5	7,30
63	130	100	85-6	109,5	15,0
76	150	115	98-6	124,5	18,8

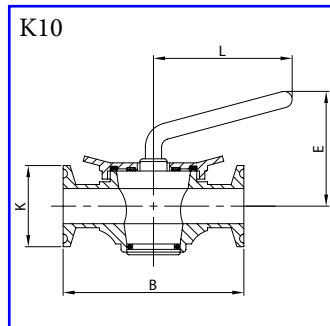


Plug cock 2-way
plain ends
AISI 304L, AISI 316L



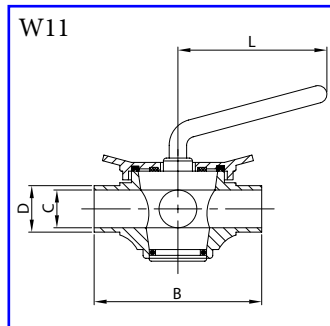
DN	B	C	D	L	Kg
1"	25	125	22,1	25,4	100 1,95
1 1/2"	38	160	34,8	38,1	115 4,25
2"	51	170	47,5	50,8	140 6,05
2 1/2"	63	200	60,2	63,5	160 12,6
3"	76	230	72,9	76,2	160 16,15

Plug cock 2-way
end ferrule CLAMP
AISI 304L, AISI 316L



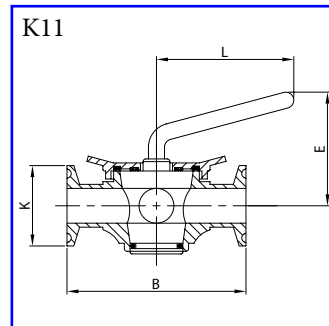
DN	B	E	K	L	Kg
1"	25	125	90	50,5	100 1,93
1 1/2"	38	160	117	50,5	115 4,27
2"	51	170	122	64,0	140 6,45
2 1/2"	63	200	142	77,5	160 14,3
3"	76	230	154	91,0	160 18,4

Plug cock 3-way
plain ends
AISI 304L, AISI 316L



DN	B	C	D	L	Kg
1"	25	125	22,1	25,4	100 2,05
1 1/2"	38	160	34,8	38,1	115 4,45
2"	51	170	47,5	50,8	140 6,10
2 1/2"	63	200	60,2	63,5	160 12,35
3"	76	230	72,9	76,2	160 17,00

Plug cock 3-way
end ferrule CLAMP
AISI 304L, AISI 316L



DN	B	C	D	L	Kg
1"	25	125	90	50,5	100 2,05
1 1/2"	38	160	117	50,5	115 4,45
2"	51	170	122	64,0	140 6,10
2 1/2"	63	200	142	77,5	160 12,35
3"	76	230	154	91,0	160 17,00