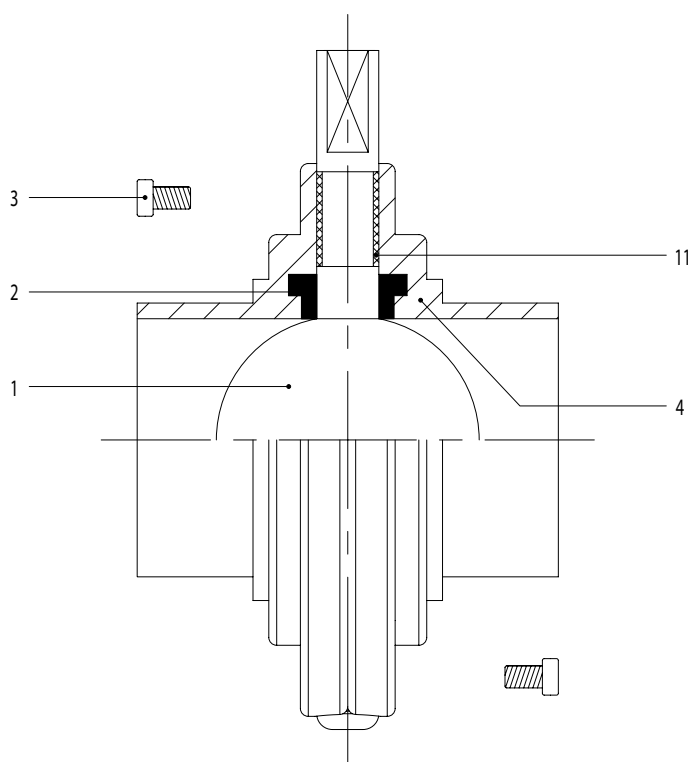


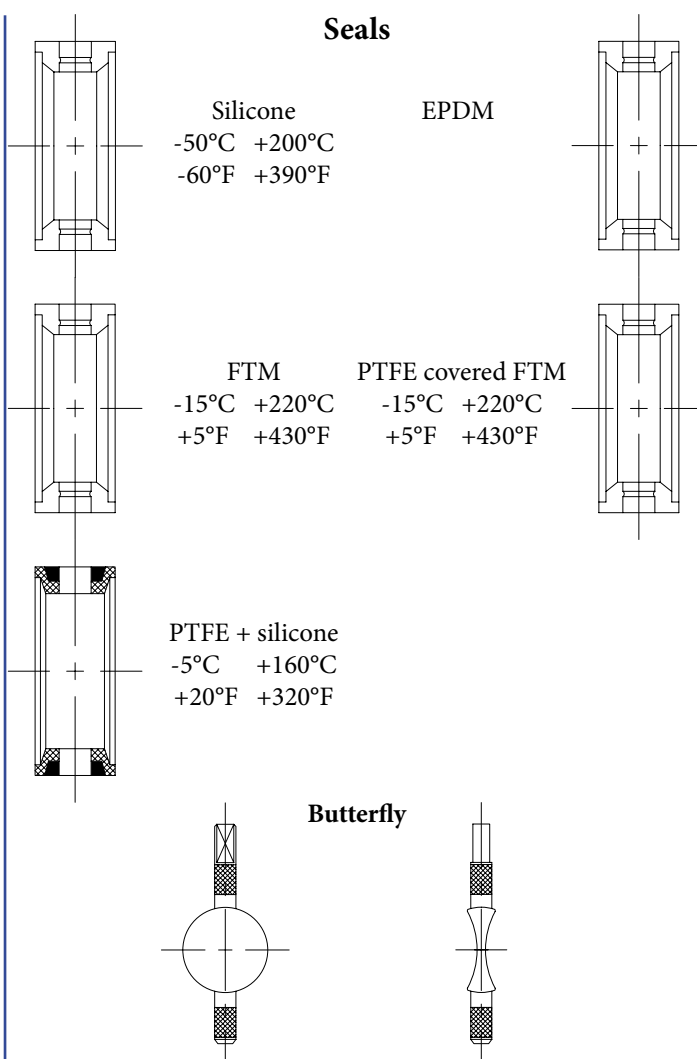


- made from press-forged and solution heat-treated blanks
- shutters made from press-forged and solution heat-treated AISI 316L stainless steel pieces machined over the entire surface and ground on the revolving parts
- standard fitting of two PTFE bushes on the shutter stems to eliminate rotation friction
- seal rings compression-pressed from first grade elastomers. Standard silicone. On request EPDM, FTM, PTFE-coated FTM, PTFE + silicone.
- interchangeability between the different standards available
- wide range of manual controls to meet different system requirements
- simple, safe and reliable operating
- horizontal and vertical single-, double-effect, and modulating pneumatic controls. Can be equipped with proximity contact, microswitch (electric or pneumatic), solenoid valve (24 V AC, 24 V DC, 48 V AC), connector
- standard production: from DN 25 to DN 250, max. operating pressure: 7 bars; 2 bars for PTFE seal



- 1. butterfly
- 2. seal
- 3. screw
- 4. flange
- 11. PTFE bush

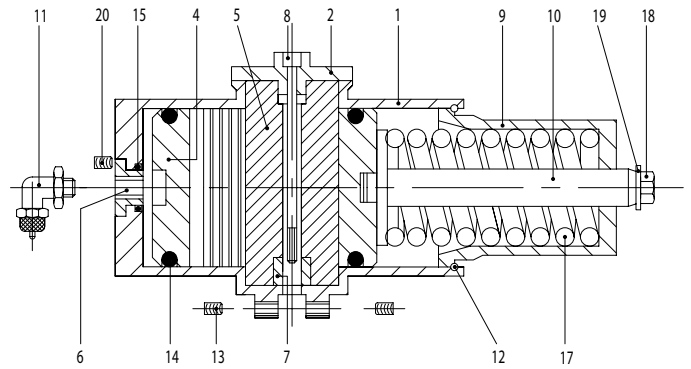
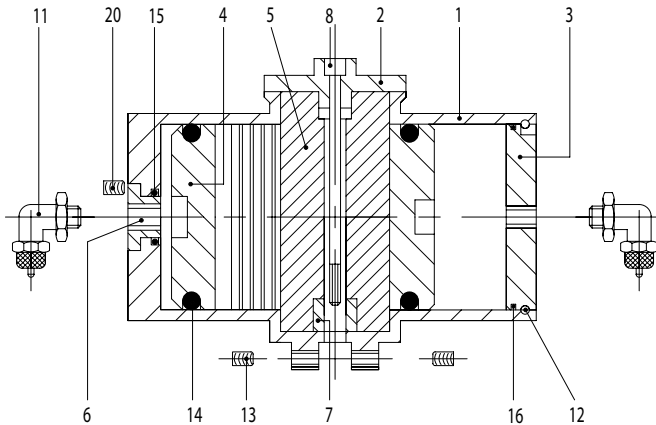
Seals



Pos.	Code	Norm	1" 25	D25 28	D32 34	1 1/2" 38	D40 40	2" 51	D50 52	2 1/2" 63	D65 70	3" 76	D80 85	4" 101	D100 101	4" 104	D100 104	Mat.	
1	700		25/28	25/28	34/38	34/38	40	51/52	51/52	63	70/76	70/76	85	101	101	104	104	6L	
2	700		25/28	25/28	34/38	34/38	40	51/52	51/52	63	70/76	70/76	85	101	101	104	104	S/V/ E/T	
3	TCC		6x12	6x12	6x12	6x12	6x12	6x12	6x12	6x12	6x12	6x12	6x12	6x12	6x12	6x12	6x12	4L	
4	701	L	25	28	34	38	40	51	52	63	70	76	85	101	101	104	104	4L/6L	
11	700		25/28	25/28	34/104	34/104	34/104	34/104	34/104	34/104	34/104	34/104	34/104	34/104	34/104	34/104	34/104	34/104	T

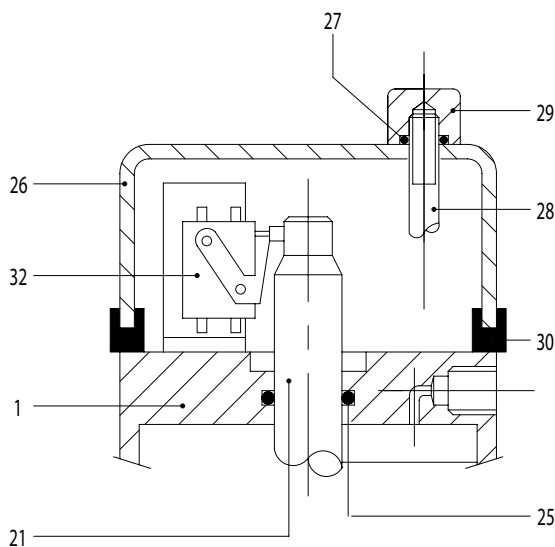
Horizontal pneumatic actuator - double effect

Horizontal pneumatic actuator - single effect

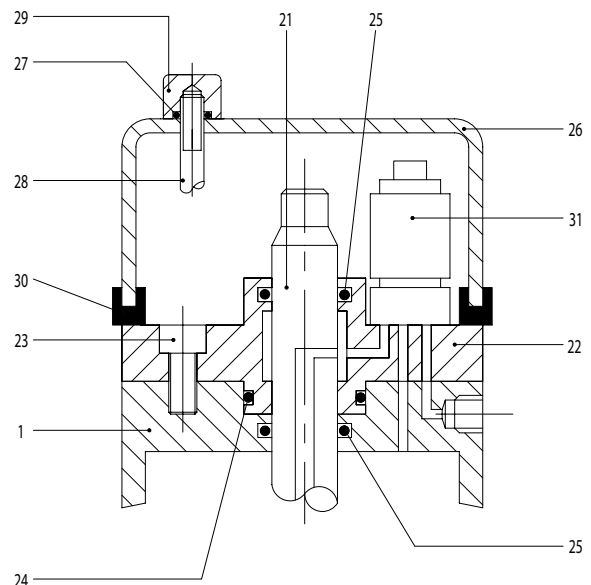


Position	Part	Position	Part
1	Cylinder	17	Spring
2	Blank	18	Screw
3	Flange	19	Washer
4	Horizontal gear	20	Dowel
5	Vertical gear	21	Spindle
6	Air inlet	22	Air distributor
7	Shutter adapter	23	Screw
8	Shutter set screw	24	OR seal ring
9	Spring cover	25	OR seal ring
10	Spring shaft	26	Cap
11	Air union	27	OR seal ring
12	locking ring	28	Tie rod
13	Dowel	29	Tie rod nut
14	OR seal ring	30	Cap seal
15	OR seal ring	31	Solenoid vent
16	OR seal ring	32	Microswitch

Cylinder head complete with microswitch



Cylinder head complete with solenoid valve

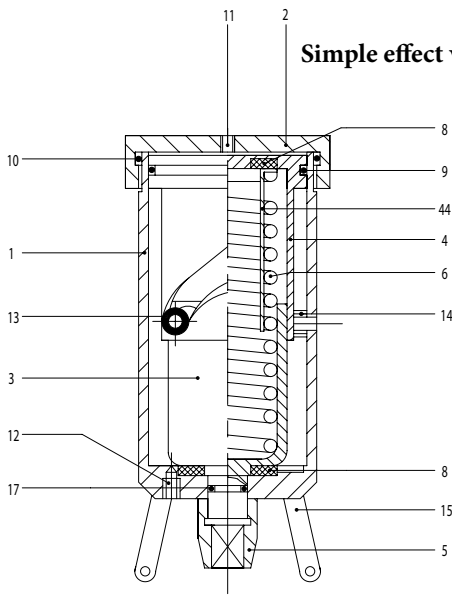


BUTTERFLY VALVES I.

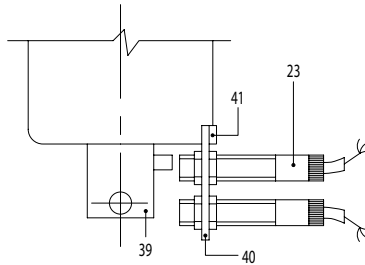
str. V6

Coding:

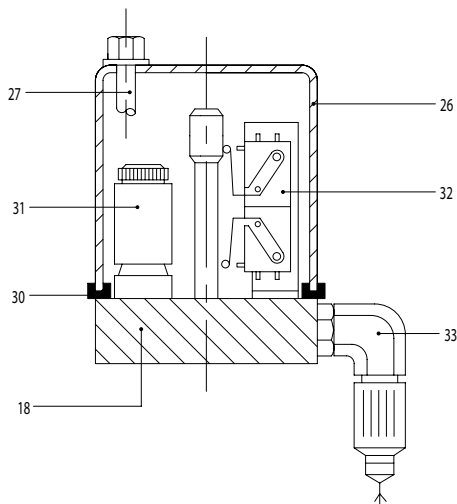
Pos.	Code	1" 25	D25 28	D32 34	1 1/2" 38	D40 40	2" 51	D50 52	2 1/2" 63	D65 70	3" 76	D80 85	4" 101	D100 101	Material
1	7C1	25/52	25/52	25/52	25/52	25/52	25/52	25/52	63/85	63/85	63/85	63/85	101	101	4L
2	7C1	25/52	25/52	25/52	25/52	25/52	25/52	25/52	63/85	63/85	63/85	63/85	101	101	4L
3	7C1	25/52	25/52	25/52	25/52	25/52	25/52	25/52	63/85	63/85	63/85	63/85	101	101	4L
4	7C1	25/52	25/52	25/52	25/52	25/52	25/52	25/52	63/85	63/85	63/85	63/85	101	101	A
5	7C1	25/52	25/52	25/52	25/52	25/52	25/52	25/52	63/85	63/85	63/85	63/85	101	101	T
6	7C1												101	101	4L
7	7C1	25/85	25/85	25/85	25/85	25/85	25/85	25/85	25/85	25/85	25/85	25/85	101	101	4L
8	7C1	25/52	25/52	25/52	25/52	25/52	25/52	25/52	63/85	63/85	63/85	63/85	101	101	4L
9	7C1								63/85	63/85	63/85	63/85	101	101	4L
10	7C2								63/85	63/85	63/85	63/85	101	101	4L
11	800	1/8"	1/8"	1/8"	1/8"	1/8"	1/8"	1/8"	1/8"	1/8"	1/8"	1/8"	1/8"	1/8"	OT
12	7C2	63x2	63x2	63x2	63x2	63x2	63x2	63x2	76x2	76x2	76x2	76x2	88x2	88x2	4L
13	GRA	8x10	8x10	8x10	8x10	8x10	8x10	8x10	8x10	8x10	8x10	8x10	8x10	8x10	4L
14	OR	152	152	152	152	152	152	152	6237	6237	6237	6237	6275	6275	E
15	OR												123	123	E
16	OR	152	152	152	152	152	152	152	4250	4250	4250	4250	177	177	E
17	7C2								63/85	63/85	63/85	63/85	101	101	4L
18	TE								10x20	10x20	10x20	10x20	10x20	10x20	4L
19	RON								10x2	10x2	10x2	10x2	10x2	10x2	4L
20	GRA												6x10	6x10	4L
21	7C1								63/85	63/85	63/85	63/85	101	101	4L
22	7C1												101	101	4L
23	TCCE												6x30	6x30	4L
24	OR												3081	3081	E
25	OR												123	123	E
26	7C1	25/52	25/52	25/52	25/52	25/52	25/52	25/52	63/85	63/85	63/85	63/85	101	101	4L
27	OR	108	108	108	108	108	108	108	108	108	108	108	108	108	E
28	7C1	25/101	25/101	25/101	25/101	25/101	25/101	25/101	25/101	25/101	25/101	25/101	25/101	25/101	4L
29	7C1	25/101	25/101	25/101	25/101	25/101	25/101	25/101	25/101	25/101	25/101	25/101	25/101	25/101	4L
30	7C1	25/52	25/52	25/52	25/52	25/52	25/52	25/52	63/85	63/85	63/85	63/85	101	101	E
31	015	U	U	U	U	U	U	U	U	U	U	U	U	U	
32	014	1	1	1	1	1	1	1	1	1	1	1	1	1	



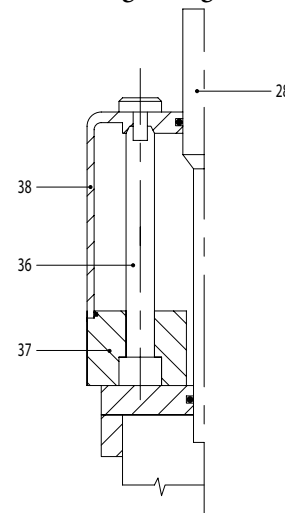
Simple effect vertical pneumatic actuator



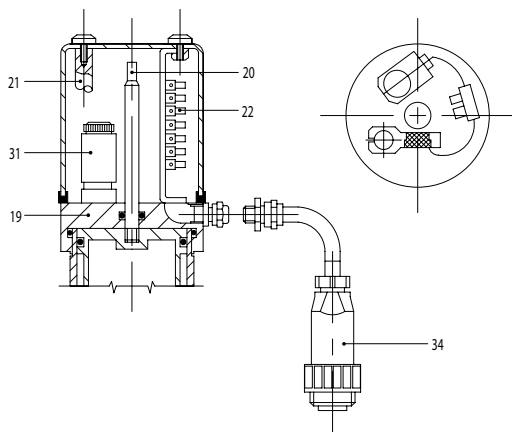
ABS control unit complete with signalling rod with signalling rod



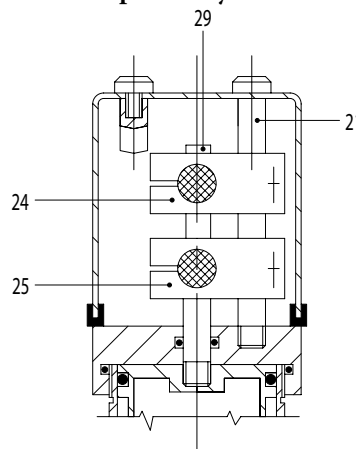
Control unit complete with solenoid valve, 2 microswiches, connector



Control unit complete with 2 proximity contacts



Control unit complete with solenoid valve and connector



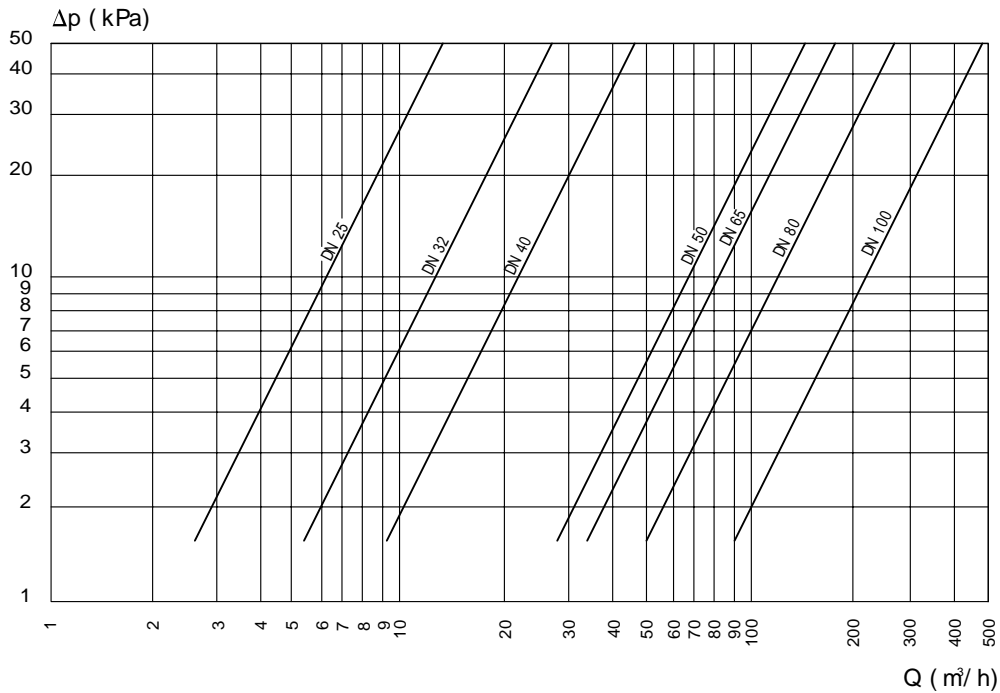
Pos.	Part
1	Cylinder
2	Blank
3	Rotary cylinder
4	Piston
5	Adapter
6	Spring
8	Thrust block
9	OR seal ring
10	OR seal ring
11	Air inlet
12	Air vent
13	Bronze roller
14	Bronze roller
15	Bracket
17	OR seal ring
18	Control unit base
19	Control unit base
20	Spindle
21	Tie rod
22	Terminal strip
23	Proximity contact
24	Proximity contact
25	Proximity contact
26	Cap
27	Tie rod
28	Special spindle
29	Proximity contact pin
30	Cap seal
31	Solenoid valve
32	Microswitch
33	Connector
34	Connector
36	Tie rod
37	ABS base
38	ABS cap
39	Adapter
40	Proximity contact bracket
41	Bracket screw
44	Spring holder

Coding:

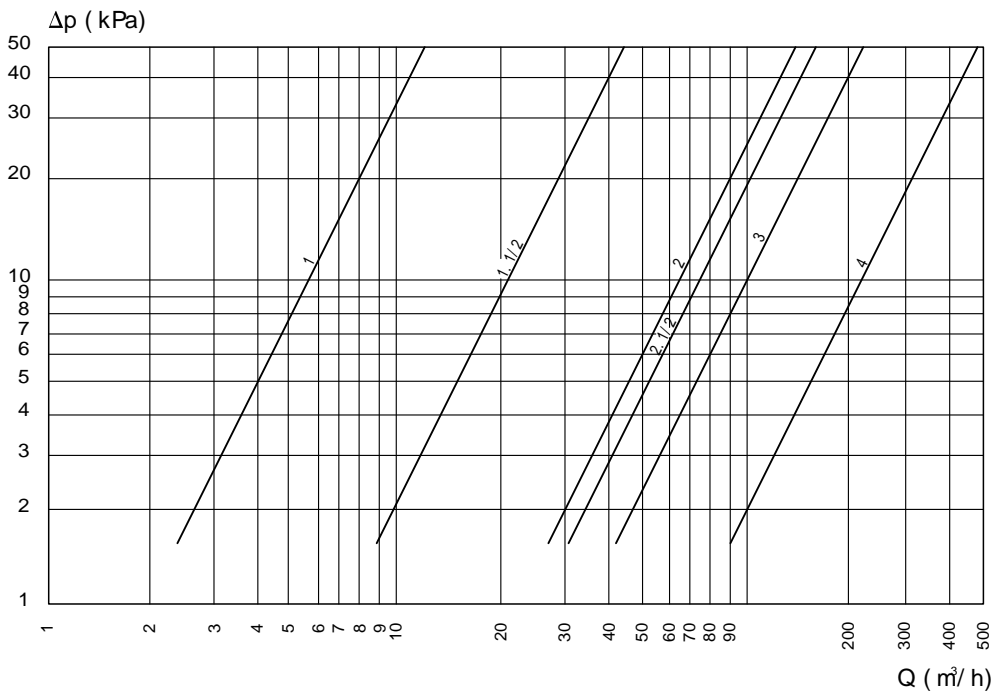
Pos.	Code	1" - 2" 25/52	2 1/2" - 4" 63/101	Material
1	7C4	25/101	25/101	4L
2	7C4	25/101	25/101	4L
3	7C4	25/101	25/101	4L
4	7C4	25/101	25/101	A
5	7C4	25/101	25/101	4L
6	7C4	25/101	25/101	4L
8	7C4	25/101	25/101	T
9	OR	6237	6237	E
10	OR	177	177	E
11	800	1/8"	1/8"	OT
12	GRA	6x10	6x10	4L
13	RUL	14x7	14x7	B
14	RUL	14x5	14x5	B
15	7C4	25/52	63/101	4L
17	OR	117	117	E
18	7C4	25/101	25/101	4L
19	7C4	25/101	25/101	4L
20	7C4	25/101	25/101	4L
21	7C4	25/101	25/101	4L
22	7C4	25/101	25/101	4
23	013	O	O	
24	013	S	S	
25	013	S	S	
26	800	51/52	51/52	4L
27	7C4	25/101	25/101	4L
28	7C4	25/101	25/101	4L
29	7C4	25/101	25/101	4L
30	800	51/52	51/52	E
31	015	U	U	
32	014	I	I	
33	030	H	H	
34	030	S	S	
36	7C4	25/101	25/101	4L
37	7C4	25/101	25/101	ABS
38	7C4	25/101	25/101	ABS
39	7C4	25/101	25/101	4L
40	7C4	25/101	25/101	4L
41	7C4	6MAx12	6MAx12	4L
44	7C4	25/101	25/101	4L

Pressure drop

Butterfly valves DIN



Butterfly valves SMS, CLAMP



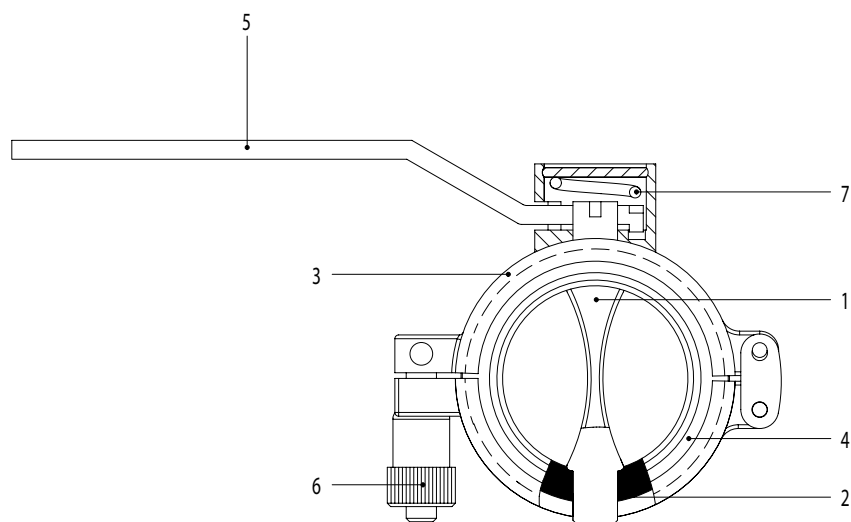
Torque ratings - silicone seals

Diameter	Open (90°)	Closed (0°)
1"	1 Nm	5 Nm
1 1/2"	1 Nm	5 Nm
2"	2 Nm	17 Nm
2 1/2"	5 Nm	28 Nm
3"	6 Nm	32 Nm



Hinged butterfly valves:

- Made from press-forged and solution heat-treated blanks.
- Shutters made from press-forged and solution heat-treated AISI 316L stainless steel pieces machined over the entire surface and ground on the revolving parts.
- Easy access for cleaning.
- Standard fitting of two PTFE bushes on the shutter stems to eliminate rotation friction.
- Seal rings compression-pressed from first grade elastomers. Standard silicone. On request EPDM, FTM, PTFE-coated FTM, PTFE + silicone.
- Simple, safe and reliable operating.
- Standard finish: 120 grain external polishing and internal glazing. Other finishes on request.
- Maximum operating pressure: 2 bars.

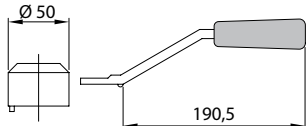


Pos.	Part	Code	Norm	2" 51	Material
1	Butterfly	730		51/52	6L
2	Seal	700		51/52	S/V/E/T
3	CLAMP	730		51/52	4L
4	Flange	730	L	51/52	4L
5	Handle	730		51/52	4L
6	Locking ring	730		51/52	4L
7	Spring	730		51/52	AC

Handles and seals

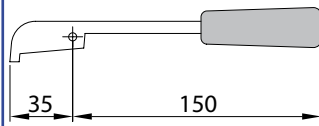
Handle
removable

7M0



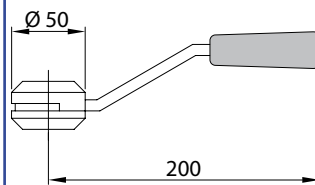
Handle
with blocking

7M2



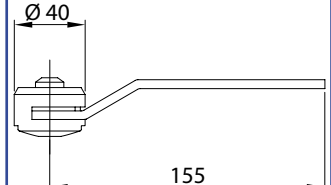
Handle
opening 2 positions

7M3



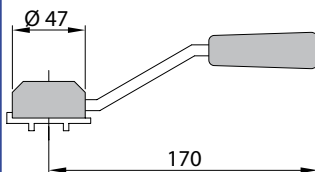
Handle
opening 4 positions

7M12



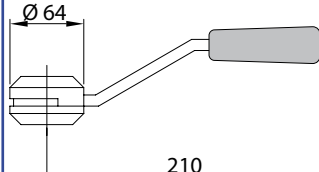
Handle
opening 7 positions

7M9



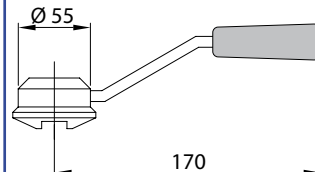
Handle
opening 10 positions

7M4



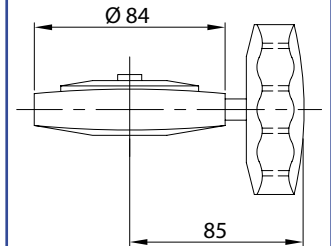
Handle
opening 20 positions

7M5



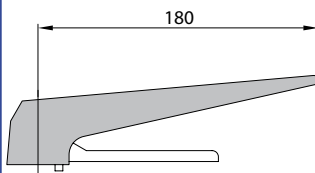
Handle
micrometric

7M6



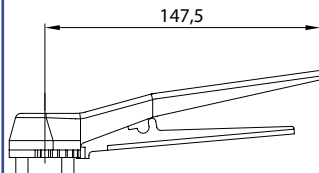
Handle ABS
with lever

7M8



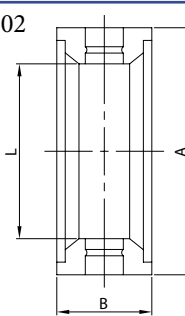
Handle
with lever 7 positions

7M11



Seal ring
for butterfly valve

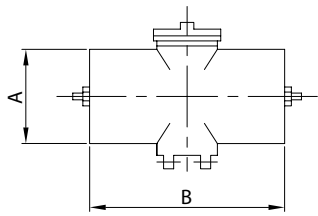
700 02



DN	A	B	L
25/28	43,6	23,2	27,0
34/38	52,3	23,2	35,0
40	55,6	23,2	39,0
51/52	66,0	23,2	49,0
60/63	76,4	23,4	59,5
70/76	88,8	25,4	69,5
85	99,0	25,4	79,5
101/104	119,0	25,4	100,0

Pneumatic actuator
double effect

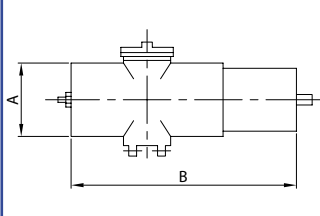
7C1L



DN	A	B	Kg
25/52	60,0	138,5	1,46
63/85	76,0	161,0	2,10
101/104	89,0	180,0	2,96

Pneumatic actuator
single effect

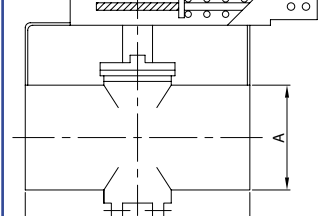
7C2L



DN	A	B	Kg
25/52	76,0	240,0	2,19
63/85	89,0	260,0	3,15

Pneumatic actuator
regul. flux

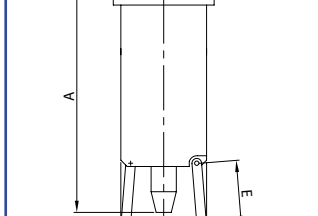
7C1LM



DN	A	B	Kg
25/104	89,0	180,0	4,16

Pneumatic actuator
single effect vertical

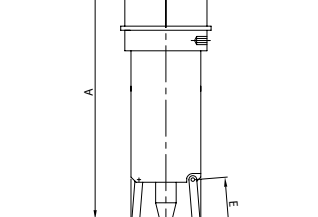
7C4L



DN	A	B	E	Kg
25/52	211,0	76,0	64,0	3,70
63/104	211,0	76,0	58,0	3,70

Pneumatic actuator
single eff. vertical, control unit

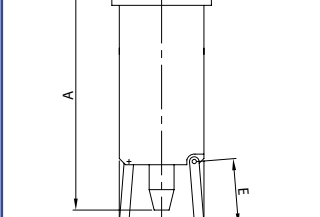
7C4UC



DN	A	B	E	Kg
25/52	316,0	76,0	64,0	3,90
63/104	316,0	76,0	58,0	3,90

Pneumatic actuator
double effect vertical

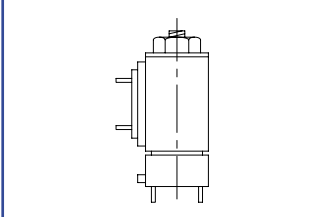
7C5L



DN	A	B	E	Kg
25/52	211,0	76,0	64,0	3,70
63/104	211,0	76,0	58,0	3,70

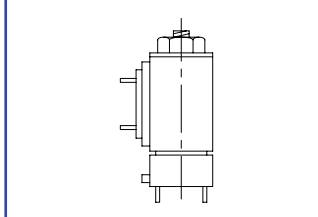
Solenoid valve NC

015NC



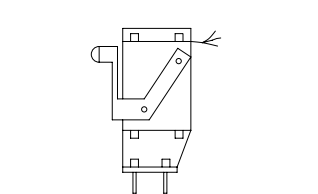
Solenoid valve NO

015NA



Microswitch

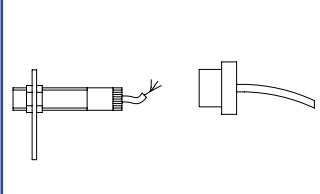
0141



Proximity contact

0130

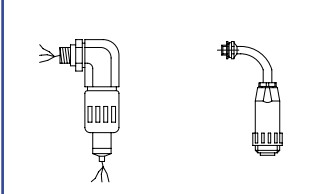
013S



Connector

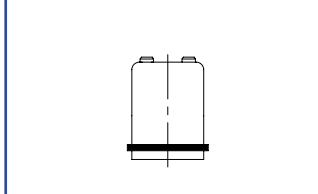
030H

030S



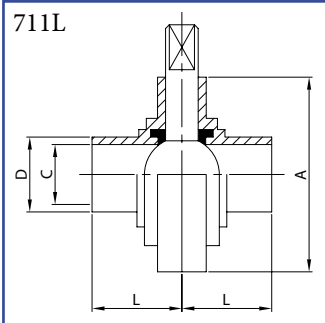
Control unit

700UC4



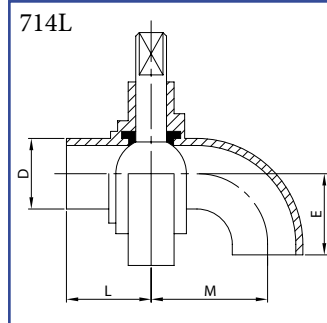
DIN

Butterfly valve
weld / weld
AISI 304L, AISI 316L



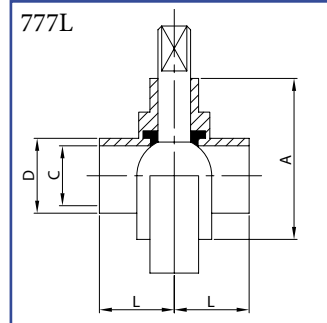
DN	A	C	D	L	Kg
28	79,0	25,0	28,0	34,0	0,73
34	85,0	31,0	34,0	38,0	0,81
40	92,0	37,0	40,0	38,0	0,99
52	105,0	49,0	52,0	40,0	1,27
70	125,0	66,0	70,0	41,0	1,76
85	137,0	81,0	85,0	42,0	2,30
101	157,0	97,6	101,6	44,0	2,30
104	157,0	100,0	104,0	44,0	2,30
129	180,0	124,0	129,0	40,0	4,90
154	212,0	149,0	154,0	40,0	6,20
204	256,0	199,0	204,0	45,0	9,30
254	306,0	249,0	254,0	45,0	11,9

Butterfly valve
weld / bend
AISI 304L, AISI 316L



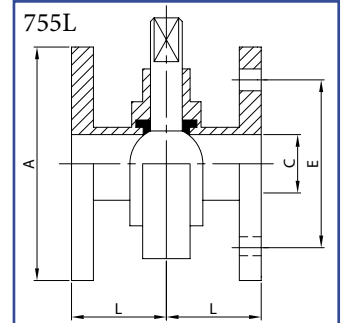
DN	D	E	L	M	Kg
28	28,0	50,0	34,0	80,0	0,79
34	34,0	56,0	38,0	86,0	0,91
40	40,0	67,0	38,0	97,0	1,14
52	52,0	72,0	40,0	102,0	1,46
70	70,0	85,0	41,0	115,0	2,17
85	85,0	98,0	42,0	128,0	2,83
101	101,6	110,0	44,0	140,0	3,65
104	104,0	110,0	44,0	140,0	3,65

Butterfly valve
weld / weld
AISI 304L, AISI 316L



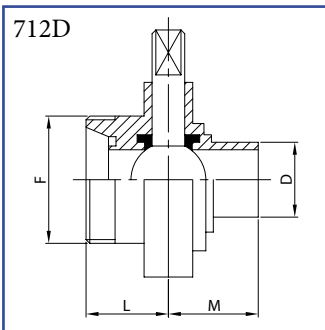
DN	A	C	D	L	Kg
28	79,0	25,0	28,0	30,0	0,70
34	85,0	31,0	34,0	30,0	0,78
40	92,0	37,0	40,0	30,0	0,96
52	105,0	49,0	52,0	30,0	1,23
70	125,0	66,0	70,0	30,0	1,70
85	137,0	81,0	85,0	30,0	2,23
101	157,0	97,6	101,6	30,0	2,23
104	157,0	100,0	104,0	30,0	2,23

Butterfly valve
weld / flange
AISI 304L, AISI 316L



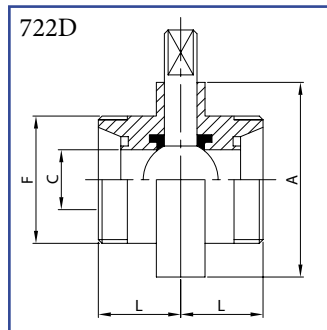
DN	A	C	E	L	Kg
28	100,0	25,0	75,0	43,5	2,03
34	120,0	31,0	90,0	47,5	3,00
40	130,0	37,0	100,0	47,5	3,49
52	140,0	49,0	110,0	49,5	3,97
70	160,0	66,0	130,0	50,5	5,16
85	190,0	81,0	150,0	51,5	7,60
101	210,0	97,6	170,0	53,5	8,84
104	210,0	100,0	170,0	53,5	8,84

Butterfly valve
male part / weld
AISI 304L, AISI 316L



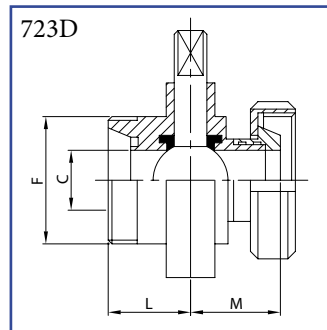
DN	D	F	L	M	Kg
25	28,0	52-6	34,0	34,0	0,85
32	34,0	58-6	34,0	38,0	1,02
40	40,0	65-6	38,0	38,0	1,22
50	52,0	78-6	38,0	40,0	1,57
65	70,0	95-6	38,0	41,0	2,00
80	85,0	110-4	41,5	42,0	2,75
100	101,6	130-4	44,0	44,0	3,39
104	104,0	130-4	44,0	44,0	3,39

Butterfly valve
male parts
AISI 304L, AISI 316L



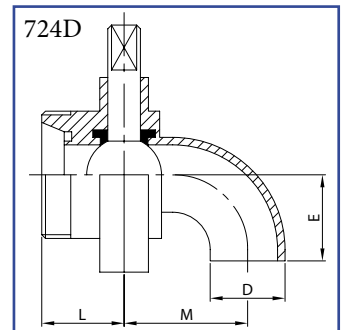
DN	A	C	F	L	Kg
25	79,0	25,0	52-6	34,0	0,97
32	85,0	31,0	58-6	34,0	1,23
40	92,0	37,0	65-6	38,0	1,45
50	105,0	49,0	78-6	38,0	1,87
65	125,0	66,0	95-6	38,0	2,26
80	137,0	81,0	110-4	41,5	3,20
100	157,0	97,6	130-4	44,0	3,94
104	157,0	100,0	130-4	44,0	3,94

Butterfly valve
male part / taper part + nut
AISI 304L, AISI 316L



DN	C	F	L	M	Kg
25	25,0	52-6	34,0	41,0	1,09
32	31,0	58-6	34,0	45,0	1,32
40	37,0	65-6	38,0	44,0	1,60
50	49,0	78-6	38,0	46,0	2,09
65	66,0	95-6	38,0	48,0	2,84
80	81,0	110-4	41,5	51,0	3,90
100	97,6	130-4	44,0	53,0	5,16
104	100,0	130-4	44,0	53,0	5,16

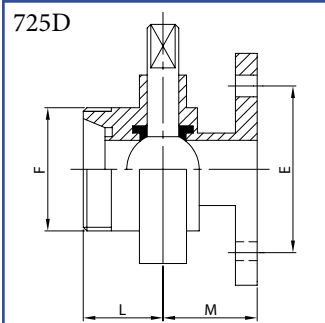
Butterfly valve
male part / bend
AISI 304L, AISI 316L



DN	D	E	L	M	Kg
25	28,0	50,0	34,0	80,0	0,91
32	34,0	56,0	34,0	86,0	1,12
40	40,0	67,0	38,0	97,0	1,37
50	52,0	72,0	38,0	102,0	1,76
65	70,0	85,0	38,0	115,0	2,41
80	85,0	98,0	41,5	128,0	3,28
100	101,6	110,0	44,0	140,0	4,20
104	104,0	110,0	44,0	140,0	4,20

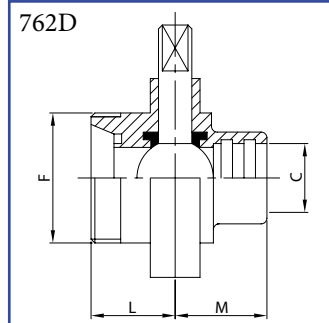
DIN

Butterfly valve
male part / flange
AISI 304L, AISI 316L



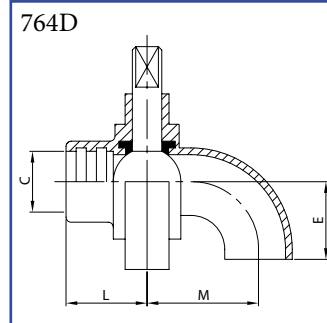
DN	E	F	L	M	Kg
25	75,0	52-6	34,0	43,5	1,50
32	90,0	58-6	34,0	47,5	2,12
40	100,0	65-6	38,0	47,5	2,47
50	110,0	78-6	38,0	49,5	2,92
65	130,0	95-6	38,0	50,5	3,70
80	150,0	110-4	41,5	51,5	5,40
100	170,0	130-4	44,0	53,5	6,39
104	170,0	130-4	44,0	53,5	6,39

Butterfly valve
male part / expanding end
AISI 304L, AISI 316L



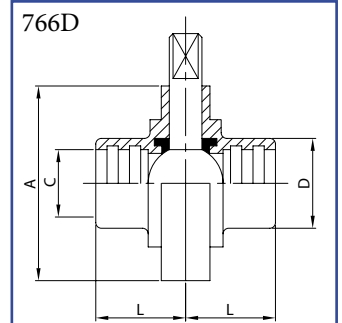
DN	C	F	L	M	Kg
25	28,0	52-6	34,0	29,0	0,97
32	34,0	58-6	34,0	32,0	1,23
40	40,0	65-6	38,0	34,0	1,45
50	52,0	78-6	38,0	36,0	1,87
65	70,0	95-6	38,0	39,0	2,26
80	85,0	110-4	41,5	42,0	3,20
100	101,6	130-4	44,0	44,0	3,94
104	104,0	130-4	44,0	44,0	3,94

Butterfly valve
expanding end / bend
AISI 304L, AISI 316L



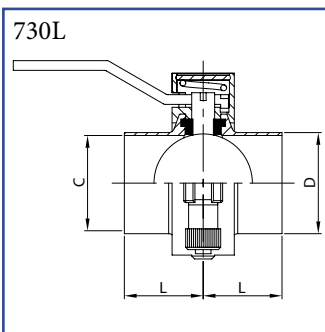
DN	C	E	L	M	Kg
25	28,0	50,0	29,0	80,0	0,91
32	34,0	56,0	32,0	86,0	1,12
40	40,0	67,0	34,0	97,0	1,37
50	52,0	72,0	36,0	102,0	1,76
65	70,0	85,0	39,0	115,0	2,41
80	85,0	98,0	42,0	128,0	3,28
100	101,6	110,0	44,0	140,0	4,20
104	104,0	110,0	44,0	140,0	4,20

Butterfly valve
expanding ends
AISI 304L, AISI 316L



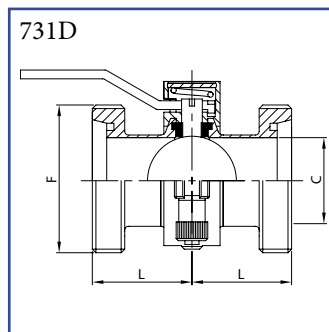
DN	A	C	D	L	Kg
25	79,0	28,0	35,0	29,0	0,97
32	85,0	34,0	41,0	32,0	1,23
40	92,0	40,0	48,0	34,0	1,45
50	105,0	52,0	61,0	36,0	1,87
65	125,0	70,0	79,0	39,0	2,26
80	137,0	85,0	93,0	42,0	3,20
100	157,0	101,6	114,0	44,0	3,94
104	157,0	104,0	114,0	44,0	3,94

Hinged butterfly valve
weld / weld
AISI 304L, AISI 316L



DN	C	D	L	Kg
52	49,0	52,0	40,0	0,85

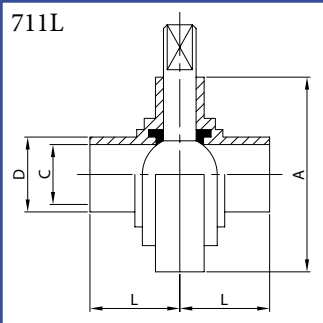
Hinged butterfly valve
male parts
AISI 304L, AISI 316L



DN	C	F	L	Kg
50	49,0	78-6	38,0	1,10

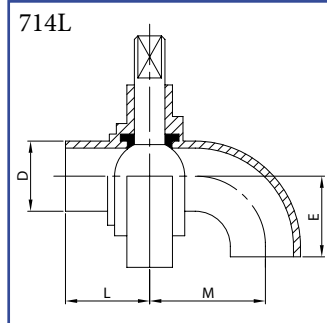
SMS

Butterfly valve
weld / weld
AISI 304L, AISI 316L



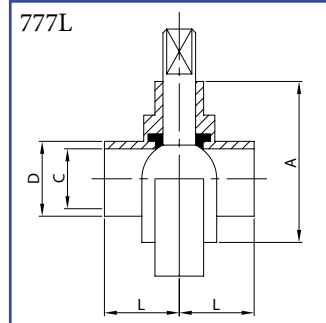
DN	A	C	D	L	Kg
25	79,0	22,4	25,4	34,0	0,73
38	85,0	35,1	38,1	38,0	0,81
51	105,0	47,8	50,8	40,0	1,27
63	112,0	60,5	63,5	40,0	1,46
76	125,0	72,9	76,2	41,0	1,76
101	157,0	97,6	101,6	44,0	2,84

Butterfly valve
weld / bend
AISI 304L, AISI 316L



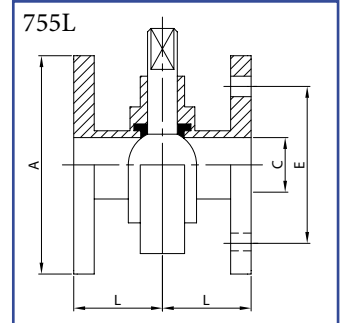
DN	D	E	L	M	Kg
25	25,4	40,0	34,0	70,0	0,77
38	38,1	55,0	38,0	85,0	0,92
51	50,8	75,0	40,0	105,0	1,47
63	63,5	85,0	40,0	115,0	1,78
76	76,2	85,0	41,0	115,0	2,27
101	101,6	110,0	44,0	140,0	3,65

Butterfly valve
weld / weld
AISI 304L, AISI 316L



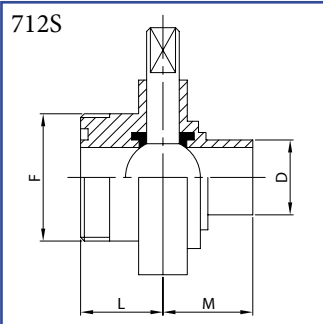
DN	A	C	D	L	Kg
25	79,0	22,4	25,4	30,0	0,70
38	85,0	35,1	38,1	30,0	0,78
51	105,0	47,8	50,8	30,0	1,23
63	112,0	60,5	63,5	30,0	1,42
76	125,0	72,9	76,2	30,0	1,70
101	157,0	97,6	101,6	30,0	2,75

Butterfly valve
weld / flange
AISI 304L, AISI 316L



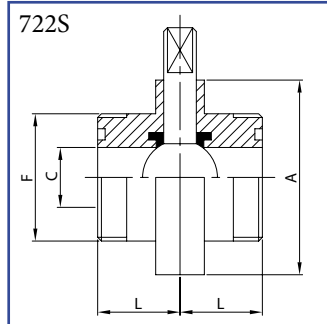
DN	A	C	E	L	Kg
25	100,0	22,4	75,0	43,5	2,03
38	120,0	35,1	90,0	47,5	3,00
51	140,0	47,8	110,0	49,5	3,97
63	160,0	60,5	130,0	49,5	4,86
76	190,0	72,9	150,0	50,5	5,20
101	210,0	97,6	170,0	53,5	8,84

Butterfly valve
male part / weld
AISI 304L, AISI 316L



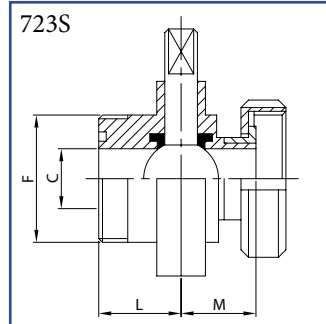
DN	D	F	L	M	Kg
25	25,4	40-6	34,0	34,0	0,81
38	38,1	60-6	38,0	38,0	1,09
51	50,8	70-6	40,0	40,0	1,48
63	63,5	85-6	40,0	40,0	1,78
76	76,2	98-6	41,0	41,0	2,26
101	101,6	132-6	44,0	44,0	3,39

Butterfly valve
male parts
AISI 304L, AISI 316L



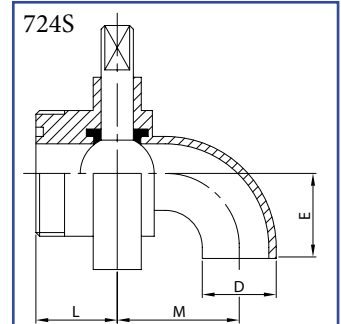
DN	A	C	F	L	Kg
25	79,0	22,4	40-6	34,0	0,89
38	85,0	35,1	60-6	38,0	1,37
51	105,0	47,8	70-6	40,0	1,69
63	112,0	60,5	85-6	40,0	2,10
76	125,0	72,9	98-6	41,0	2,79
101	157,0	97,6	132-6	44,0	3,94

Butterfly valve
male part / liner part + nut
AISI 304L, AISI 316L



DN	C	F	L	M	Kg
25	22,4	40-6	34,0	34,0	0,96
38	35,1	60-6	38,0	38,0	1,48
51	47,8	70-6	40,0	40,0	1,92
63	60,5	85-6	40,0	40,0	2,49
76	72,9	98-6	41,0	41,0	3,21
101	97,6	132-6	44,0	44,0	5,11

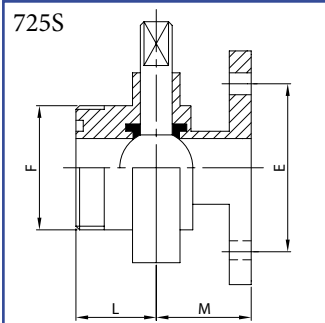
Butterfly valve
male part / bend
AISI 304L, AISI 316L



DN	D	E	L	M	Kg
25	25,4	40,0	34,0	70,0	0,85
38	38,1	55,0	38,0	85,0	1,20
51	50,8	75,0	40,0	105,0	1,68
63	63,5	85,0	40,0	115,0	2,10
76	76,2	85,0	41,0	115,0	2,77
101	101,6	110,0	44,0	140,0	4,20

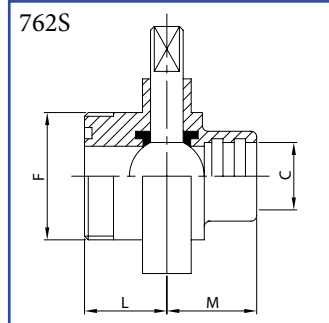
SMS

Butterfly valve
male part / flange
AISI 304L, AISI 316L



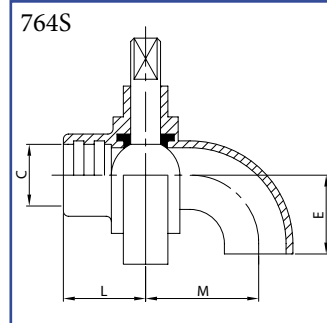
DN	E	F	L	M	Kg
25	75,0	40-6	34,0	43,5	1,46
38	90,0	60-6	38,0	47,5	2,19
51	110,0	706	40,0	49,5	2,83
63	130,0	85-6	40,0	49,5	3,48
76	150,0	98-6	41,0	50,5	3,98
101	170,0	132-6	44,0	53,5	6,39

Butterfly valve
male part / expanding end
AISI 304L, AISI 316L



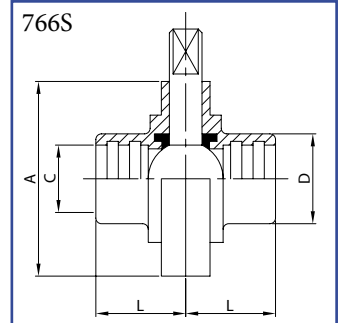
DN	C	F	L	M	Kg
25	25,4	40-6	34,0	34,0	0,85
38	38,1	60-6	38,0	38,0	1,20
51	50,8	70-6	40,0	40,0	1,68
63	63,5	85-6	40,0	40,0	2,10
76	76,2	98-6	41,0	41,0	2,77
101	101,6	132-6	44,0	44,0	4,20

Butterfly valve
expanding end / bend
AISI 304L, AISI 316L



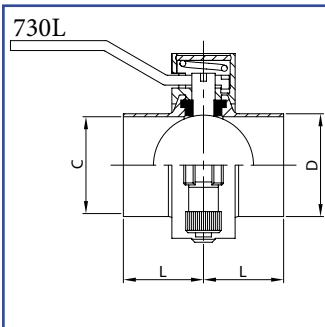
DN	C	E	L	M	Kg
25	25,4	40,0	34,0	70,0	0,85
38	38,1	55,0	38,0	85,0	1,20
51	50,8	75,0	40,0	105,0	1,68
63	63,5	85,0	40,0	115,0	2,10
76	76,2	85,0	41,0	115,0	2,77
101	101,6	110,0	44,0	140,0	4,20

Butterfly valve
expanding ends
AISI 304L, AISI 316L



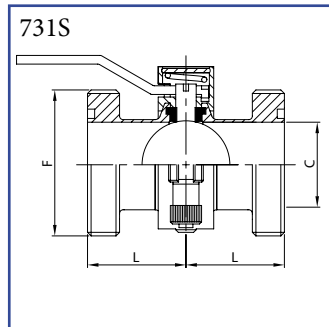
DN	A	C	D	L	Kg
25	79,0	25,4	32,0	34,0	0,89
38	85,0	38,1	48,0	38,0	1,37
51	105,0	50,8	61,0	40,0	1,69
63	112,0	63,5	73,5	40,0	2,10
76	125,0	76,2	86,0	41,0	2,76
101	157,0	101,6	116,0	44,0	3,94

Hinged butterfly valve
weld / weld
AISI 304L, AISI 316L



DN	C	D	L	Kg
51	47,8	50,8	40,0	0,85

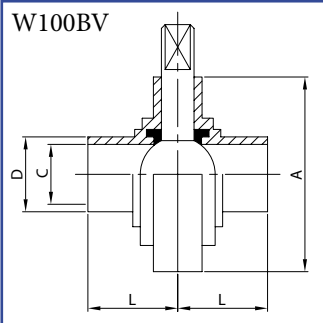
Hinged butterfly valve
male parts
AISI 304L, AISI 316L



DN	C	F	L	Kg
51	47,8	70-6	45,0	1,05

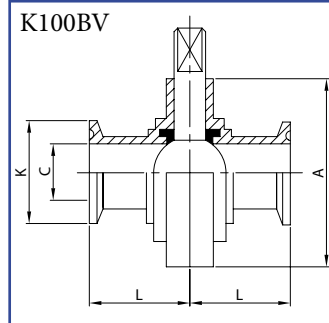
CLAMP

Butterfly valve
weld / weld
AISI 304L, AISI 316L



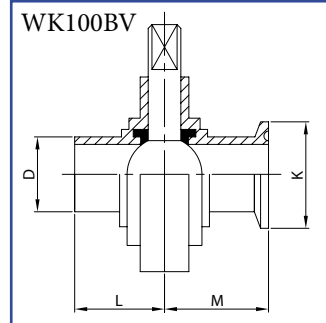
DN	A	C	D	L	Kg	
1"	25	79,0	22,1	25,4	34,0	0,73
1 1/2"	38	85,0	34,8	38,1	38,0	0,81
2"	51	105,0	47,5	50,8	40,0	1,27
2 1/2"	63	112,0	60,2	63,5	40,0	1,46
3"	76	125,0	72,9	76,2	41,0	1,76
4"	101	157,0	97,4	101,6	44,0	2,48
5"	127	180,0	122,0	127,0	40,0	4,10
6"	152	212,0	147,4	152,4	40,0	6,00
8"	203	256,5	198,2	203,2	45,0	7,80
10"	254	306,5	249,0	254,0	45,0	17,0

Butterfly valve
with CLAMP ends
AISI 304L, AISI 316L



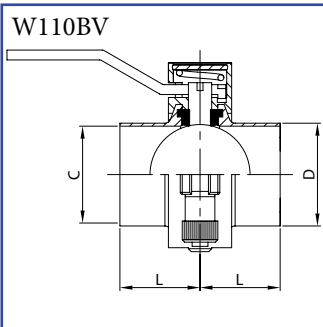
DN	A	C	K	L	Kg	
1"	25	79,0	22,1	50,5	35,0	0,95
1 1/2"	38	85,0	34,8	50,5	36,0	1,00
2"	51	105,0	47,5	64,0	40,0	1,20
2 1/2"	63	112,0	60,2	77,5	40,0	1,60
3"	76	125,0	72,9	91,0	40,0	1,95
4"	101	157,0	97,4	119,0	45,0	3,45
5"	127	180,0	122,0	144,5	41,0	4,30
6"	152	212,0	147,4	166,0	41,0	6,20
8"	203	256,5	198,2	217,0	45,0	8,10
10"	254	306,5	249,0	268,0	45,0	17,4

Butterfly valve
weld / CLAMP end
AISI 304L, AISI 316L



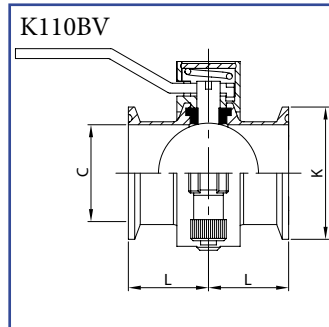
DN	D	K	L	M	Kg	
1"	25	25,4	50,5	34,0	35,0	0,84
1 1/2"	38	38,1	50,5	38,0	36,0	0,90
2"	51	50,8	64,0	40,0	40,0	1,24
2 1/2"	63	63,5	77,5	40,0	40,0	1,53
3"	76	76,2	91,0	41,0	40,0	1,85
4"	101	101,6	119,0	44,0	45,0	3,15
5"	127	127,0	144,5	40,0	41,0	4,20
6"	152	152,4	166,0	40,0	41,0	6,10
8"	203	203,2	217,0	45,0	45,0	7,95
10"	254	254,0	268,0	45,0	45,0	17,2

Hinged butterfly valve
weld / weld
AISI 316L



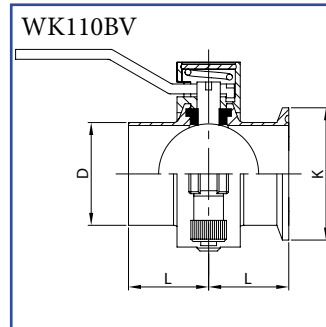
DN	C	D	L	Kg	
2"	51	47,5	50,8	40,0	0,85

Hinged butterfly valve
with CLAMP ends
AISI 316L



DN	C	K	L	Kg	
2"	51	47,5	64,0	40,0	0,88

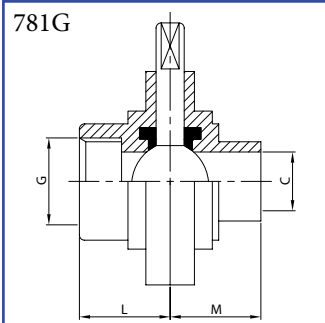
Hinged butterfly valve
weld / CLAMP end
AISI 316L



DN	D	K	L	Kg	
2"	51	50,8	64,0	40,0	0,87

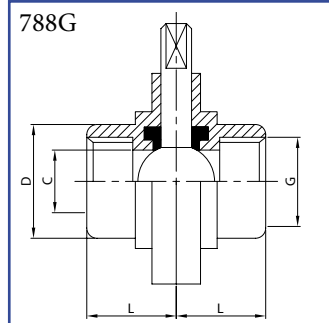
GAS

Butterfly valve
inner thread / weld
AISI 304L, AISI 316L



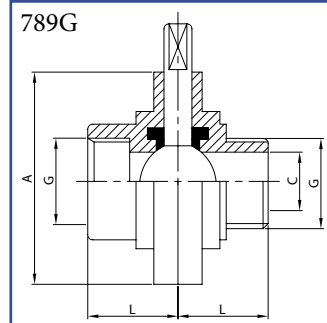
DN	C	G	L	M	Kg
34	20,0	3/4"	34,0	34,0	1,65
100	25,5	1"	34,0	34,0	1,90
114	34,0	1 1/4"	38,0	38,0	1,97
112	39,0	1 1/2"	38,0	38,0	2,44
200	50,0	2"	40,0	40,0	2,90
212	66,0	2 1/2"	40,0	41,0	3,28
300	77,5	3"	41,0	41,0	5,50
400	101,0	4"	44,0	44,0	5,74

Butterfly valve
inner threads
AISI 304L, AISI 316L



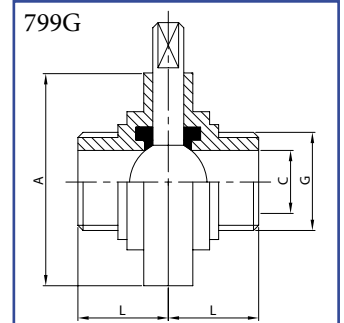
DN	C	D	G	L	Kg
34	20,0	37,0	3/4"	34,0	1,81
100	25,5	40,0	1"	34,0	2,09
114	34,0	50,0	1 1/4"	38,0	2,17
112	39,0	58,0	1 1/2"	38,0	2,68
200	50,0	70,0	2"	40,0	3,19
212	66,0	86,0	2 1/2"	40,0	3,61
300	77,5	100,0	3"	41,0	6,05
400	101,0	124,0	4"	44,0	6,31

Butterfly valve
inner thred / outer thread
AISI 304L, AISI 316L



DN	A	C	G	L	Kg
34	79,0	20,0	3/4"	34,0	1,70
100	79,0	25,5	1"	34,0	1,95
114	85,0	34,0	1 1/4"	38,0	2,05
112	92,0	39,0	1 1/2"	38,0	2,52
200	105,0	50,0	2"	40,0	3,00
212	125,0	66,0	2 1/2"	40,0	3,38
300	137,0	77,5	3"	41,0	5,60
400	157,0	101,0	4"	44,0	5,85

Butterfly valve
outside threads
AISI 304L, AISI 316L

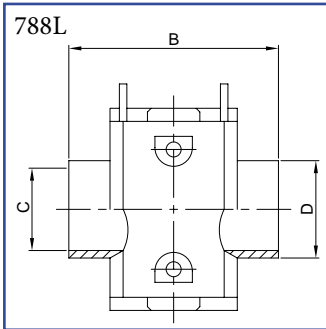


DN	A	C	G	L	Kg
34	79,0	20,0	3/4"	34,0	1,75
100	79,0	25,5	1"	34,0	2,04
114	85,0	34,0	1 1/4"	38,0	2,11
112	92,0	39,0	1 1/2"	38,0	2,60
200	105,0	50,0	2"	40,0	3,11
212	125,0	66,0	2 1/2"	40,0	3,50
300	137,0	77,5	3"	41,0	5,94
400	157,0	101,0	4"	44,0	6,20

Drainage butterfly valves

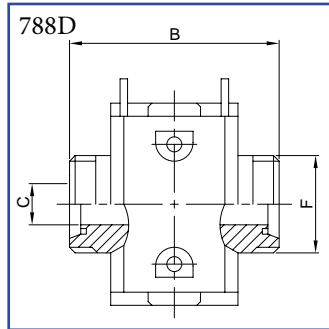
DIN

Drainage butterfly valve
weld / weld
AISI 304L, AISI 316L



DN	B	C	D	Kg
40	128,0	37,0	40,0	2,19
52	132,0	49,0	52,0	3,12
70	154,0	66,0	70,0	5,80

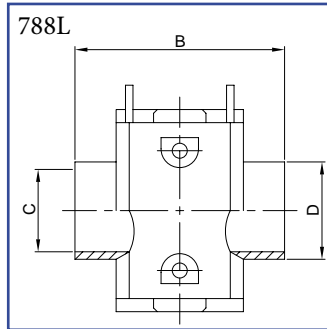
Drainage butterfly valve
male parts DIN
AISI 304L, AISI 316L



DN	B	C	F	Kg
40	128,0	37,0	65-6	2,65
50	128,0	49,0	78-6	3,72
65	148,0	66,0	95-6	6,30

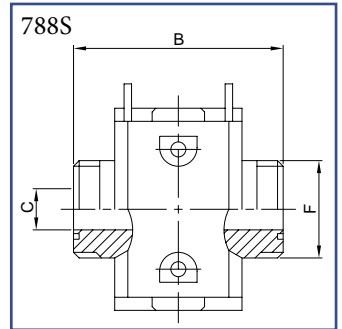
SMS

Drainage butterfly valve
weld / weld
AISI 304L, AISI 316L



DN	B	C	D	Kg
38	128,0	35,1	38,1	2,19
51	132,0	47,8	50,8	3,12
76	154,0	72,9	76,2	5,80

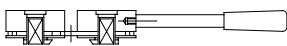
Drainage butterfly valve
male parts SMS
AISI 304L, AISI 316L



DN	B	C	F	Kg
38	128,0	35,1	60-6	2,57
51	132,0	47,8	70-6	3,55
76	154,0	72,9	98-6	6,80

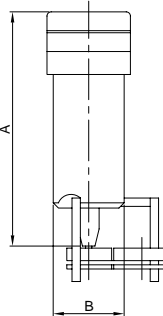
Manual handle

7N1




Pneumatic actuator

7C7L



DN	A	B	Kg
38/76	293,0	76,0	4,20



- available in two versions - with round thread Rd or with neck for welding
 - made of forged piece machining with high accuracy on numeric controlled machines
 - inner surface, in contact with medium: finish max. Ra 1,0
 - disc polished: finish max. Ra 0,6
 - possible combinations for butterfly valve: SS (welding ends), GS (thread/weld), NS (nut/weld), NN (nut/nut), GN (thread/nut), GG (thread/thread), CC (CLAMP/CLAMP). Other versions on request.
 - available also with pneumatic actuator: VV (air/air), VP (air/spring)
 - signalling of disc position (open/closed) realized with proximity switch, or contact switch
- BUTTERFLY VALVE AVAILABLE ON REQUEST WITH CERTIFICATE ATEX 

Pneumatic actuator specifications:

- pneumatic actuator air / air
 - DN 25-100 working pressure min.: 2,5 bar
 - DN 25-100 working pressure max.: 7 bar
- pneumatic actuator air / spring
 - DN 25-100 air working pressure:
 - spring closed: 5,5 bar, max. 8 bar
 - spring open: 7 bar, max. 8 bar
- air consumption for switch-over: 350 cm³/bar
- air connection: R 1/8"
- working angle: 90°
- medium: compressed air, free of dirt, dried up

Materials:

- DIN 1.4301 (AISI 304)
- DIN 1.4404 (AISI 316L)

Seals:

- silikon standard
- EPDM on request
- VITON on request
- NBR on request

Silicone (VMQ)

- colour: red
- description: macromolecular silicone

Working temperatures:

- in water resistance up to 100 °C
- short-term steam sterilization - temperature 120-130 °C
- acids and lye with low concentration - temperature 70-80 °C

Typical field of application:

High thermal load

- good immunity in face of low temperatures
- good using for food
- dielectric characteristics
- very good immunity against effects of alcohol
- no restrictions in light of physiological or dermatology

Restriction in using:

Great swelling at:

- low molecular ester
- aliphatic and aromatic hydrocarbons
- concentrated acids and alkalies

EPDM

- colour: black
- description: ethylene-propylene copolymer with liminary share of dienes

Temperature ranges:

- in water resistance for temperatures from -40 to 80 °C
- short-term steam sterilization - temperature up to 130 °C

Typical field of application:

Good resistance for:

- diluted inorganic acids
- organic alkali
- ionic medium, oxidizing medium
- lye and ketone
- hot water and steam for temperatures up to 130 °C
- effects of ozone
- aging

Restriction in using:

Not to use for:

- vegetable and animal oils
- aliphatic and aromatic hydrocarbons and thier chlorided derivates
- mineral oils

VITON (FPM)

- colour: black
- description: polymer with vinilidenfluorid

Temperature ranges:

- stable resistance for temperatures from -20 do 200 °C
- short-term steam sterilization - temperature 130 až 140 °C

Typical field of application:

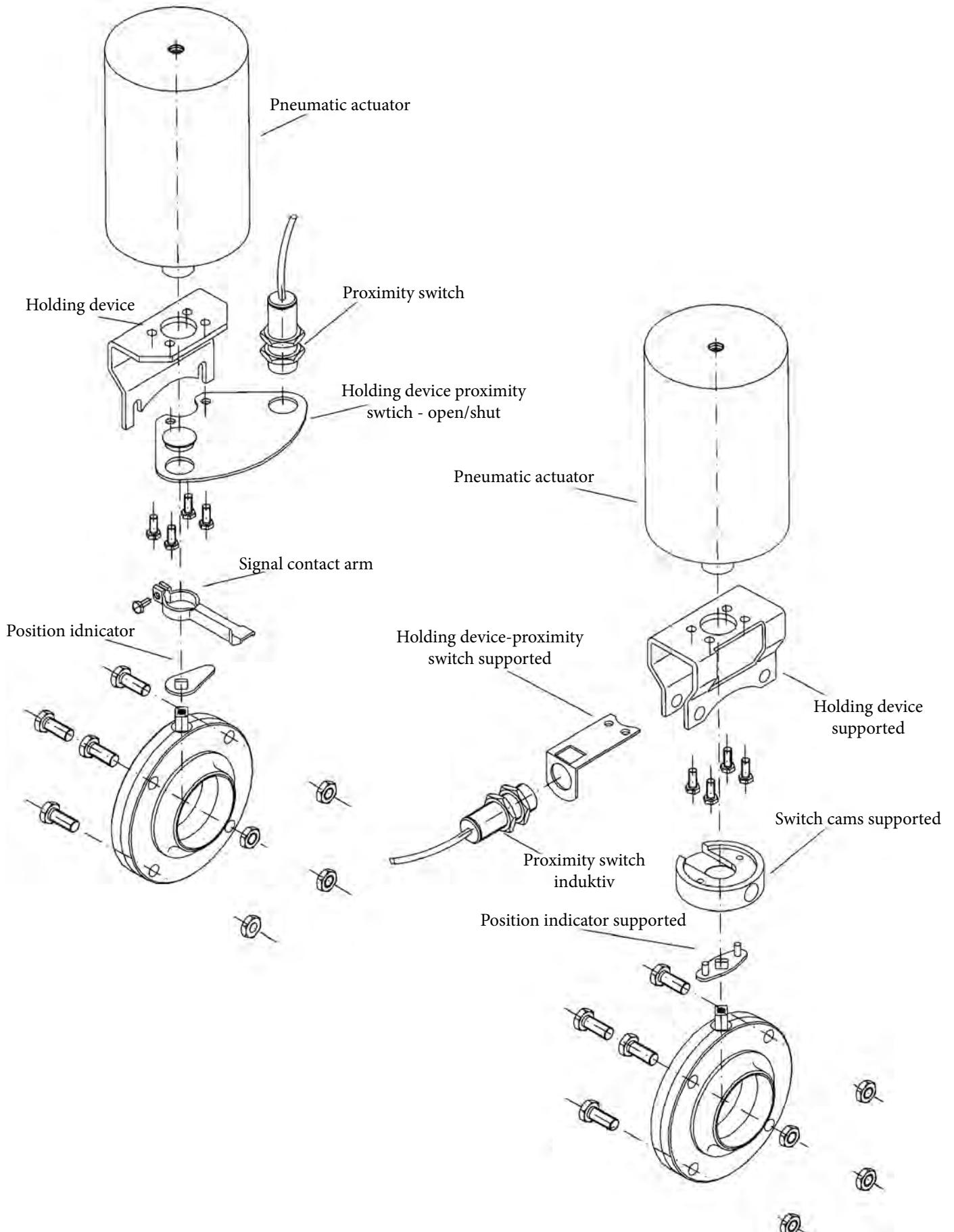
Good resistance for:

- mineral oil
- vegetable and animal oils
- fats (also against improvement additions)
- aliphatic and aromatic hydrocarbons
- concentrated acids and alkalies

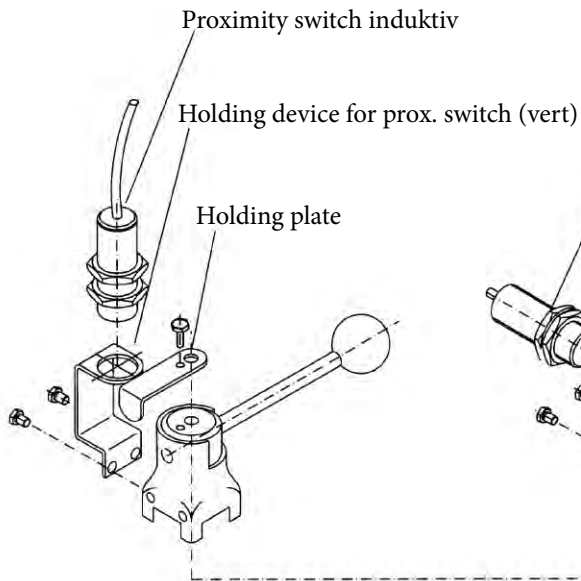
Restriction in using:

Great swelling at:

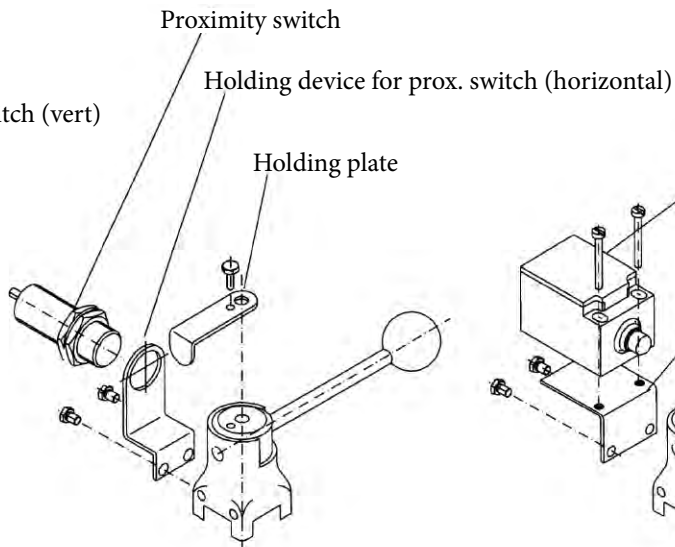
- ion solvent (acetone, methylacetate, methylethylketone)
- lowmolecular organic acids (formic acid and acetatic acid)
- ammonia steam
- amine
- paraffine
- overheat water steam



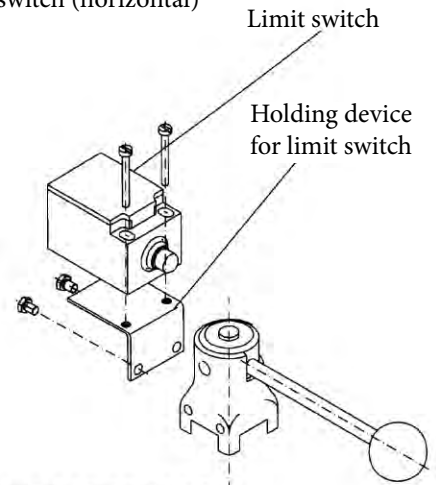
**Butterfly valve
handle-standard
with proximity switch vertical**



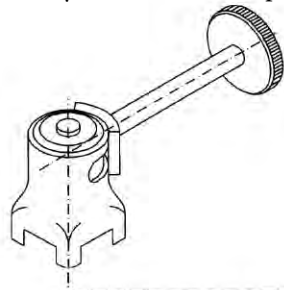
**Butterfly valve
handle-standard
with proximity switch horizontal**



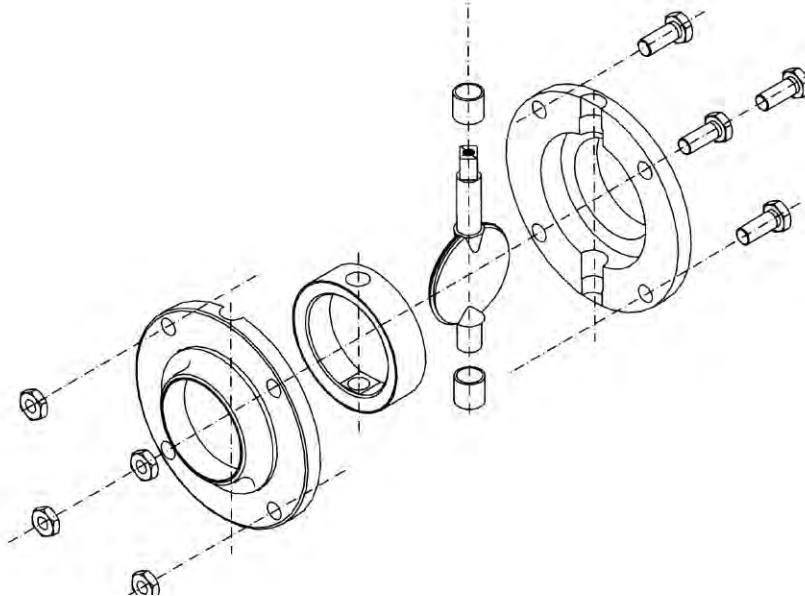
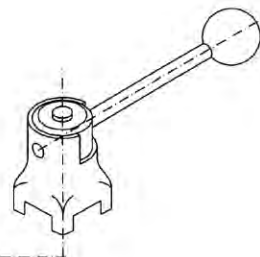
**Butterfly valve
handle-standard
with limit switch**



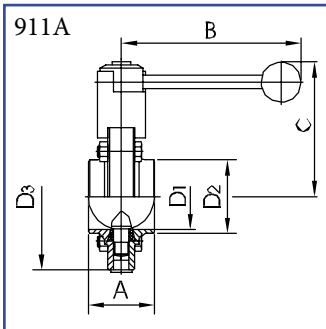
Butterfly valve handle - stepless



Butterfly valve handle - standard

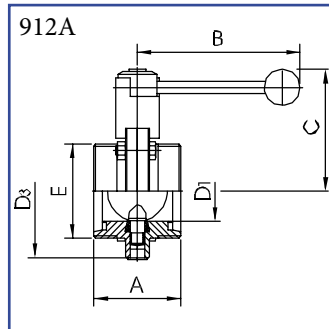


Butterfly valve S-S
weld / weld
AISI 304L, AISI 316L



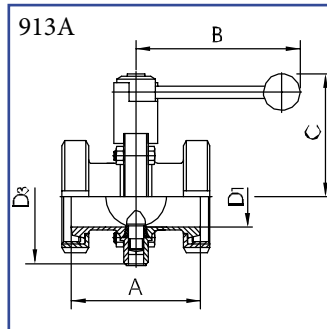
DN	A	B	C	D1	D2	D3	Kg
25	40	107	90	26	31	87	1,3
32	42	107	92	32	37	92	1,4
40	50	137	94	38	43	97	1,5
50	50	137	101	50	55	110	1,8
65	50	137	110	66	72	127	2,2
80	60	167	123	81	87	142	4,0
100	64	167	134	100	106	162	4,8
125	112	248	168	125	132	200	8,1
150	124	248	183	150	157	230	10,3

Butterfly valve G-G
male parts
AISI 304L, AISI 316L



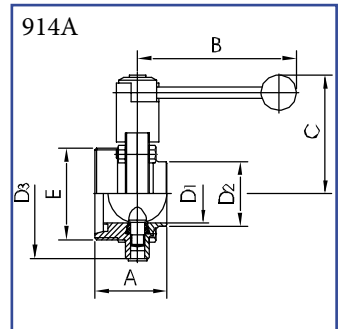
DN	A	B	C	D1	D3	E	Kg
25	64	107	90	26	87	52x1/6"	1,7
32	64	107	92	32	92	58x1/6"	1,8
40	72	137	94	38	97	65x1/6"	2,0
50	72	137	101	50	110	78x1/6"	2,4
65	76	137	110	66	127	95x1/6"	3,1
75/3"	90	167	123	72,1	142	104x1/6"	5,0
80	100	167	123	81	142	110x1/4"	5,2
100	104	167	134	100	162	130x1/4"	6,5
125	112	248	168	125	200	160x1/4"	10,2
150	124	248	183	150	230	190x1/4"	13,9

Butterfly valve N-N
taper parts with NUT
AISI 304L, AISI 316L



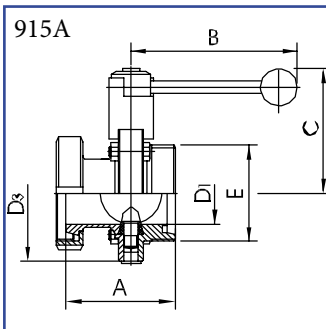
DN	A	B	C	D1	D3	Kg
25	84	107	90	26	87	2,0
32	92	107	92	32	92	2,2
40	102	137	94	38	97	2,6
50	106	137	101	50	110	3,5
65	114	137	110	66	127	4,3
75/3"	124	167	123	72,1	142	6,4
80	134	167	123	81	142	7,3
100	152	167	134	100	162	9,9
125	180	248	168	125	200	11,8
150	198	248	183	150	230	15,2

Butterfly valve G-S
male part / weld
AISI 304L, AISI 316L



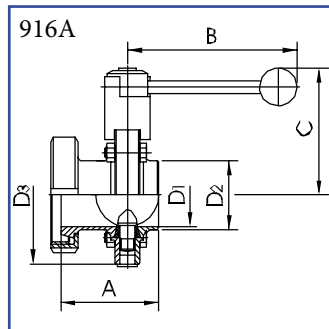
DN	A	B	C	D1	D2	D3	E	Kg
25	52	107	90	26	31	87	52x1/6"	1,5
32	53	107	92	32	37	92	58x1/6"	1,6
40	61	137	94	38	43	97	65x1/6"	1,8
50	61	137	101	50	55	110	78x1/6"	2,1
65	63	137	110	66	72	127	95x1/6"	2,6
80	80	167	123	81	87	142	110x1/4"	4,6
100	84	167	134	100	106	162	130x1/4"	5,6
125	112	248	168	125	132	200	160x1/4"	9,2
150	124	248	183	150	157	230	190x1/4"	12,2

Butterfly valve N-G
taper part with nut / male part
AISI 304L, AISI 316L



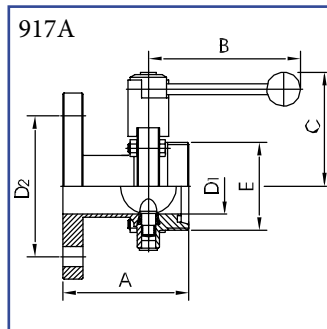
DN	A	B	C	D1	D3	E	Kg
25	74	107	90	26	87	52x1/6"	1,8
32	78	107	92	32	92	58x1/6"	1,9
40	87	137	94	38	97	65x1/6"	2,2
50	89	137	101	50	110	78x1/6"	2,7
65	95	137	110	66	127	95x1/6"	3,4
75/3"	107	167	123	72,1	142	104x1/6"	5,5
80	117	167	123	81	142	110x1/4"	5,6
100	128	167	134	100	162	130x1/4"	7,1
125	146	248	168	125	200	160x1/4"	11,4
150	161	248	183	150	230	190x1/4"	15,6

Butterfly valve N-S
taper part with nut / weld
AISI 304L, AISI 316L



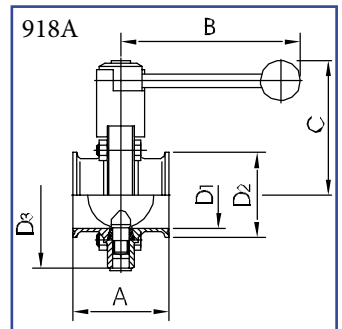
DN	A	B	C	D1	D2	D3	Kg
25	62	107	90	26	31	87	1,6
32	67	107	92	32	37	92	1,8
40	76	137	94	38	43	97	2,1
50	78	137	101	50	55	110	2,7
65	82	137	110	66	72	127	3,2
75/3"	92	167	123	72,1	77,5	142	5,3
80	97	167	123	81	87	142	5,6
100	108	167	134	100	106	162	7,4
125	146	248	168	125	132	200	10,7
150	161	248	183	150	157	230	13,3

Butterfly valve F-G
flange PN10 / male part
AISI 304L, AISI 316L



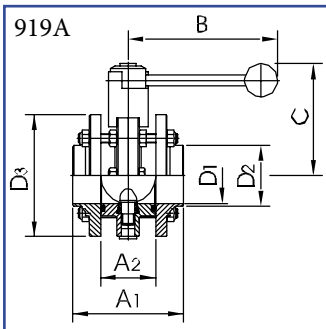
DN	A	B	C	D1	D2	E	Kg
25	106	107	90	26	85	52x1/6"	2,6
32	106	107	92	32	100	58x1/6"	3,2
40	110	137	94	38	110	65x1/6"	3,6
50	112	137	101	50	125	78x1/6"	4,6
65	122	137	110	66	145	95x1/6"	5,6
80	135	167	123	81	160	110x1/4"	8,0
100	140	167	134	100	180	130x1/4"	9,6
125	167	248	168	125	210	160x1/4"	15,5
150	182	248	183	150	240	190x1/4"	20,0

Butterfly valve C-C
clamp / clamp
AISI 304L, AISI 316L



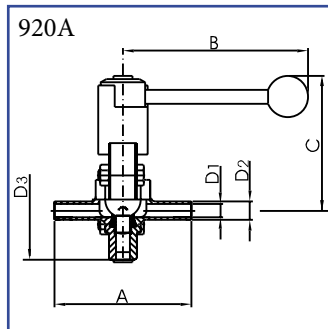
DN	A	B	C	D1	D2	D3	Kg
25	64	107	90	26	50,5	87	1,5
32	72	107	92	32	50,5	92	1,5
40	72	137	94	38	50,5	97	1,6
50	72	137	101	50	64	110	1,9
65	76	137	110	66	91	127	2,4
80	100	167	123	81	106	142	4,4
100	104	167	134	100	119	162	5,2

Butterfly valve S-S
weld / weld
between flanges



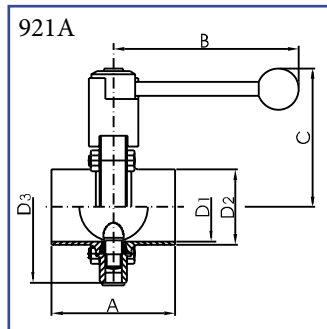
DN	A1	A2	B	C	D1	D2	D3	Kg
25	90	50	107	90	26	31	87	2,4
32	90	50	107	92	32	37	92	2,6
40	100	50	137	94	38	43	97	2,8
50	100	50	137	101	50	55	110	3,4
65	100	50	137	110	66	72	127	4,1
80	136	76	167	123	81	87	142	7,4
100	136	76	167	134	100	106	162	8,8
125	168	88	248	168	125	132	200	15,1
150	178	88	248	183	150	157	230	18,4
200	112	56	276	200	200	208	274	26,2

Butterfly valve S-S
weld / weld
for orbital welding



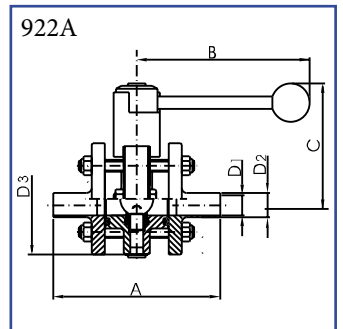
DN	A	B	C	D1	D2	D3	Kg
10	100	107	90	10	13	87	1,4
15	100	107	90	16	19	87	1,4
20	100	107	90	20	23	87	1,3

Butterfly valve S-S
weld / weld
for orbital welding



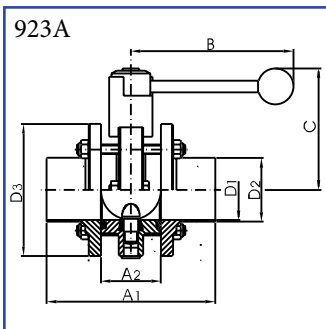
DN	A	B	C	D1	D2	D3	Kg
25	90	107	90	26	29	87	1,3
32	100	107	92	32	35	92	1,4
40	100	137	94	38	41	97	1,5
50	100	137	101	50	53	110	1,8
65	120	137	110	66	70	127	2,2
80	130	167	123	81	85	142	4,0
100	130	167	134	100	104	162	4,8

Butterfly valve S-S
weld / weld - orbital welding
between flanges



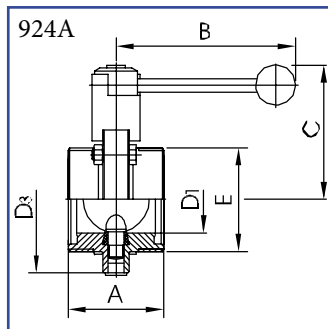
DN	A1	A2	B	C	D1	D2	D3	Kg
10	130	50	107	90	10	13	87	2,6
15	130	50	107	90	16	19	87	2,5
20	130	50	107	90	20	23	87	2,4

Butterfly valve S-S
weld / weld - orbital welding
between flanges



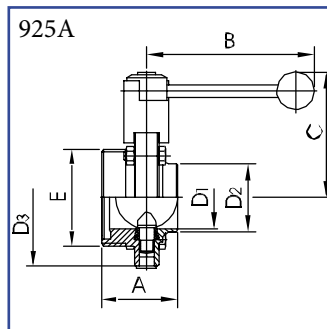
DN	A1	A2	B	C	D1	D2	D3	Kg
25	130	50	107	90	26	29	87	2,4
32	140	50	107	92	32	35	92	2,6
40	140	50	137	94	38	41	97	2,8
50	140	50	137	101	50	53	110	3,4
65	160	50	137	110	66	70	127	4,1
80	200	76	167	123	81	85	142	7,4
100	200	76	167	134	100	104	162	8,8

Butterfly valve G-G
male part / male part
ASEPTIC DIN 11864/1



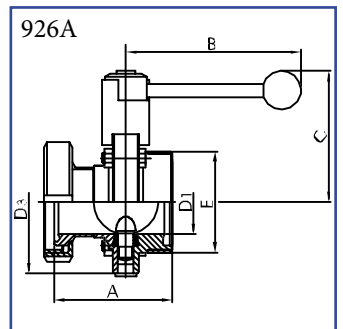
DN	A	B	C	D1	D3	E	Kg
25	64	107	90	26	87	52x1/6"	1,7
32	64	107	92	32	92	58x1/6"	1,8
40	72	137	94	38	97	65x1/6"	2,0
50	72	137	101	50	110	78x1/6"	2,4
65	76	137	110	66	127	95x1/6"	3,1
80	100	167	123	81	142	110x1/4"	5,2
100	104	167	134	100	162	130x1/4"	6,5

Butterfly valve G-S
male part / weld
ASEPTIC DIN 11864/1



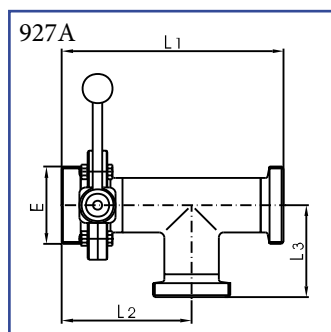
DN	A	B	C	D1	D2	D3	E	Kg
25	52	107	90	26	31	87	52x1/6"	1,5
32	53	107	92	32	37	92	58x1/6"	1,6
40	61	137	94	38	43	97	65x1/6"	1,8
50	61	137	101	50	55	110	78x1/6"	2,1
65	63	137	110	66	72	127	95x1/6"	2,6
80	80	167	123	81	87	142	110x1/4"	4,6
100	84	167	134	100	106	162	130x1/4"	5,6

Butterfly valve N-G
taper part with nut / male part
ASEPTIC DIN 11864/1



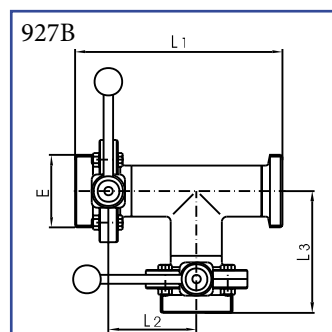
DN	A	B	C	D1	D3	E	Kg
25	74	107	90	26	87	52x1/6"	1,8
32	78	107	92	32	92	58x1/6"	1,9
40	87	137	94	38	97	65x1/6"	2,2
50	89	137	101	50	110	78x1/6"	2,7
65	95	137	110	66	127	95x1/6"	3,4
80	117	167	123	81	142	110x1/4"	5,6
100	128	167	134	100	162	130x1/4"	7,1

T - Butterfly valve G-G-G
male ends
AISI 304L, AISI 316L



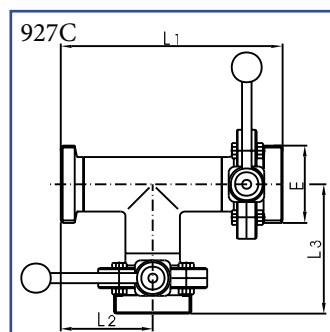
DN	E	L1	L2	L3	Kg
25	52x1/6"	180	102	79	1,8
32	58x1/6"	194	108	87	1,9
40	65x1/6"	213	121	93	2,2
50	78x1/6"	235	131	105	2,7
65	95x1/6"	262	143	120	3,7
80	110x1/4"	304	170	135	7,6
100	130x1/4"	337	184	154	8,4

T - Butterfly valve G-G-G
male ends
AISI 304L, AISI 316L



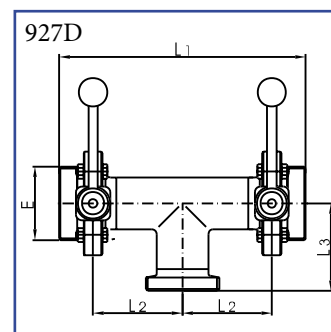
DN	E	L1	L2	L3	Kg
25	52x1/6"	180	70	102	3,2
32	58x1/6"	194	76	108	3,4
40	65x1/6"	213	85	121	3,9
50	78x1/6"	235	95	131	4,6
65	95x1/6"	262	105	143	6,0
80	110x1/4"	304	120	170	10,5
100	130x1/4"	337	132	184	13,0

T - Butterfly valve G-G-G
male ends
AISI 304L, AISI 316L



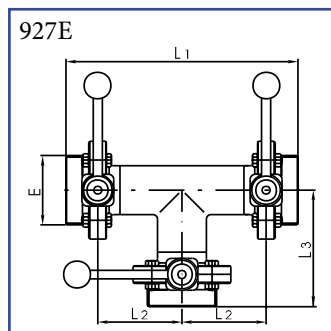
DN	E	L1	L2	L3	Kg
25	52x1/6"	180	70	102	3,2
32	58x1/6"	194	76	108	3,4
40	65x1/6"	213	85	121	3,9
50	78x1/6"	235	95	131	4,6
65	95x1/6"	262	105	143	6,0
80	110x1/4"	304	120	170	10,5
100	130x1/4"	337	132	184	13,0

T - Butterfly valve G-G-G
male ends
AISI 304L, AISI 316L



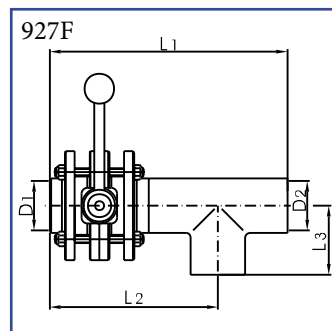
DN	E	L1	L2	L3	Kg
25	52x1/6"	203	70	79	3,2
32	58x1/6"	215	76	87	3,4
40	65x1/6"	241	85	93	3,9
50	78x1/6"	261	95	105	4,6
65	95x1/6"	285	105	120	6,0
80	110x1/4"	339	120	135	10,5
100	130x1/4"	367	132	154	13,0

T - Butterfly valve G-G-G
male ends
AISI 304L, AISI 316L



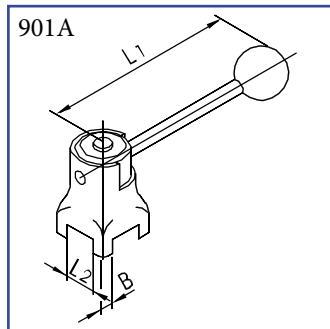
DN	E	L1	L2	L3	Kg
25	52x1/6"	203	70	102	3,2
32	58x1/6"	215	76	108	3,4
40	65x1/6"	241	85	121	3,9
50	78x1/6"	261	95	131	4,6
65	95x1/6"	285	105	143	6,0
80	110x1/4"	339	120	170	10,5
100	130x1/4"	367	132	184	13,0

T - Butterfly valve S-S-S
between flanges, welding
AISI 304L, AISI 316L



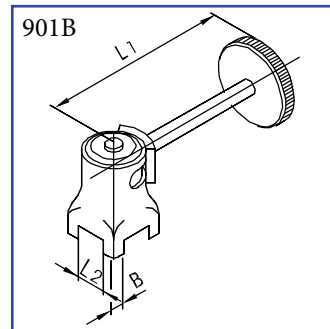
DN	D1	D2	L1	L2	L3	Kg
25	25	28	190	140	50	3,2
32	31	34	200	145	55	3,4
40	37	40	220	160	60	3,9
50	49	52	240	170	70	4,6
65	66	70	260	180	80	6,0
80	81	85	316	226	90	10,5
100	100	104	336	236	100	13,0

Butterfly valve handle 2 positions - STANDARD



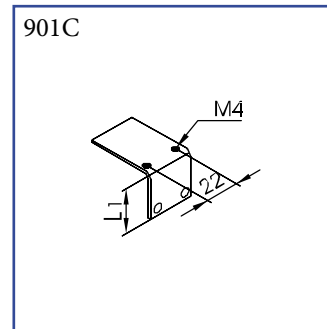
DN	B	L1	L2	Kg
25-32	9,5	107	20	0,40
40-65	9,5	137	20	0,41
75/3"-100	9,5	167	32	0,85
125 - 150	14	248	32	1,83
200	14	276	32	1,91
Without orifice with thread M4				

Butterfly valve handle stepless



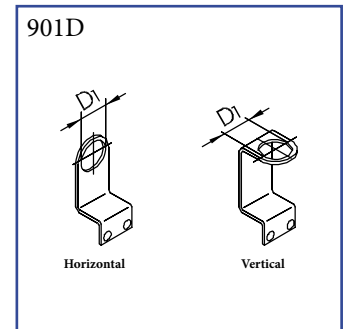
DN	B	L1	L2	Kg
25-65	9,5	126	20	0,59
75/3"-100	9,5	145	32	0,97
125-200	14,0	233	32	2,17
Without orifice with thread M4				

Holding device



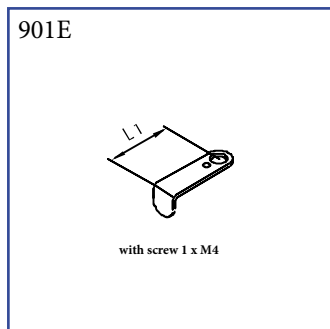
DN	L1	B	M4
25-65	15		
75/3"-100	20		
125-200	25		

Holding plate



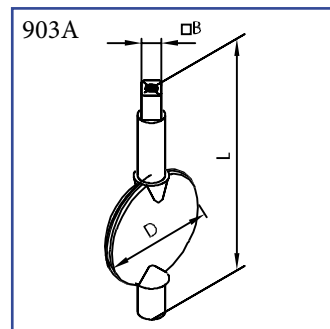
DN	D1	DN	D2
Horizontal		Vertical	
25-65	18,3	25-65	18,3
25-65	12,3	25-65	12,3
80-100	18,3	80-100	18,3
80-100	12,3	80-100	12,3
125-200	18,3	125-200	18,3
125-200	12,3	125-200	12,3

Holding plate



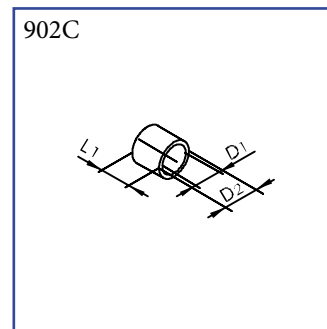
DN	L1
25-65	35
80-100	45
125-200	55

Disc



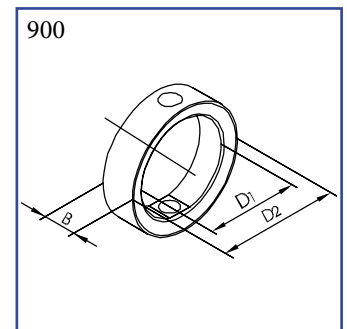
DN	D	L	B	Kg
25	26	80	9,5	0,05
32	32	87,5	9,5	0,06
40	38	93,5	9,5	0,10
50	50	111	9,5	0,15
2 1/2"	60,1	129,5	9,5	0,23
65	66	128	9,5	0,24
75/3"	71,1	144	9,5	0,30
80	81	144	9,5	0,39
100	100	164	9,5	0,63
125	125	207	14	1,16
150	150,8	236,5	14	2,00
200	200	320	14	4,25

Butterfly valve bushing



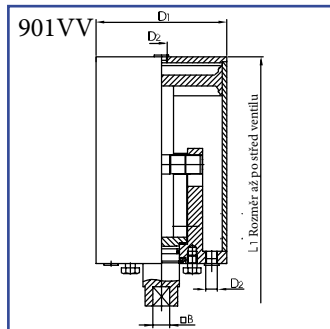
DN	D1	D2	L1
25	10	12	5
32	10	12	5
40	12	14	10
50	12	14	10
2 1/2"	12	14	10
65	12	14	10
75/3"	14	16	12
80	14	16	12
100	14	16	12
125	18	20	18
150	18	20	18
200	22	26	30

Butterfly valve seal silicone, FTM (Viton) EPDM, NBR



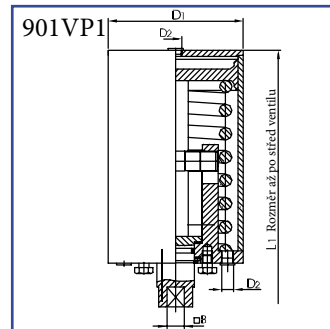
DN	D1	D2	B	Kg
25	26	40	20	0,02
32	32	48	20	0,03
40	38	54	21	0,05
50	51	67	21	0,04
2 1/2"	60,5	80	22	0,07
65	67	85	22	0,07
75/3"	74	93	24	0,09
80	82	101	24	0,10
100	101	116	26	0,10
125	125	151	29	0,25
150	150	175	29	0,27
200	203	230	37	0,42

Pneumatic actuator air / air



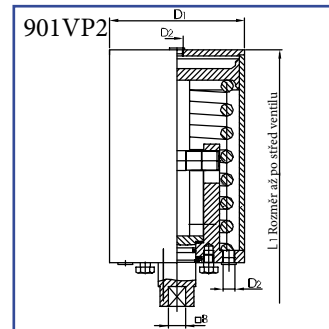
DN	D1	D2	L1	B	Kg
25	89	R1/8"	236	9,5	2,5
32	89	R1/8"	238	9,5	2,5
40	89	R1/8"	241	9,5	2,5
50	89	R1/8"	247	9,5	2,5
65	89	R1/8"	256	9,5	2,5
75/3"	89	R1/8"	263	9,5	2,5
80	89	R1/8"	263	9,5	2,5
100	89	R1/8"	273	9,5	2,5
125	129	R1/8"	332	14	7,2
150	129	R1/8"	347	14	7,2
200	129	R1/8"	385	14	7,2

Pneumatic actuator air / spring



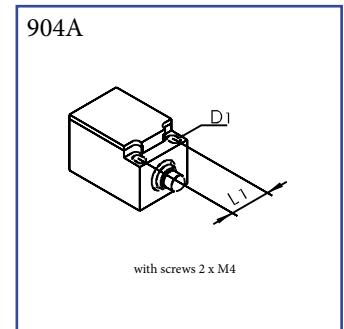
DN	D1	D2	B	L1	Kg
25	85	R1/8"	9,5	226	3,1
32	85	R1/8"	9,5	228	3,1
40	85	R1/8"	9,5	231	3,1
50	85	R1/8"	9,5	237	3,1
65	85	R1/8"	9,5	246	3,1
75/3"	85	R1/8"	9,5	253	3,1
80	85	R1/8"	9,5	253	3,1
100	85	R1/8"	9,5	263	3,1
125	129	R1/8"	14	332	9,3
150	129	R1/8"	14	347	9,3
200	129	R1/8"	14	385	9,3

Pneumatické ovládání air / spring amplified



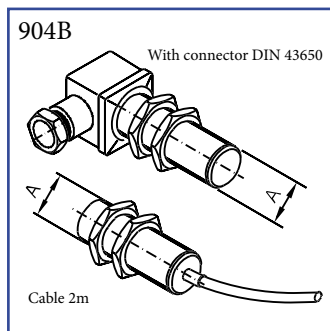
DN	D1	D2	B	L1	Kg
25	104	R1/8"	9,5	270	5,1
32	104	R1/8"	9,5	272	5,1
40	104	R1/8"	9,5	275	5,1
50	104	R1/8"	9,5	281	5,1
65	104	R1/8"	9,5	290	5,1
75/3"	104	R1/8"	9,5	297	5,1
80	104	R1/8"	9,5	297	5,1
100	104	R1/8"	9,5	307	5,1

Limit switch with screws



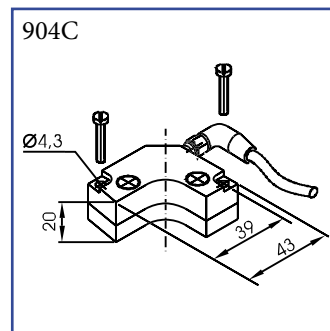
DN	Kg
25 - 200	0,04

Proximity switch induktiv



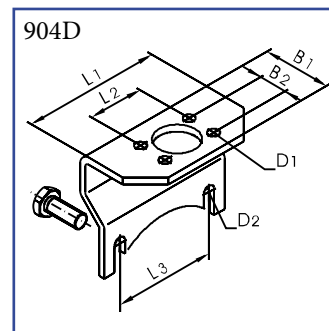
DN	A	Kg
25 - 200	M18 x 1	0,15
	M12 x 1	0,12

Double proximity switch induktiv



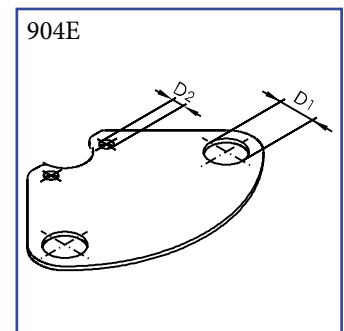
DN	Kg
25 - 200	0,02

Holding device



DN	B1	B2	D1	D2	L1	L2	L3	Kg
25	52	17,6	6	9	78	30,3	51,5	0,2
32	52	17,6	6	9	82	30,3	55	0,3
40	52	17,6	6	9	86	30,3	58	0,3
50	52	17,6	6	9	96	30,3	67,5	0,3
65	52	17,6	6	9	108	30,3	79,5	0,3
75/3"	59	17,6	6	9	118	30,3	90	0,4
80	59	17,6	6	9	118	30,3	90	0,4
100	59	17,6	6	9	132	30,3	104	0,4
125	59	25,4	9	11	118	44,0	90	0,5
150	59	25,4	9	11	132	44,0	105	0,5
200	59	25,4	9	11	132	44,0	105	0,5

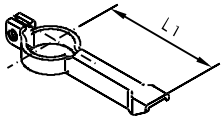
Holding device



DN	D1	D2	C
25-100	18,3	6	0,04
	12,3	6	0,04
125-200	18,3	9	0,05
	12,3	9	0,05

Signal contact arm

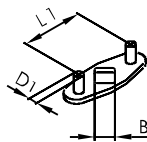
904F



DN	L1	KG
25 - 100	72	0,03
125 - 200	92	0,04

Position indicator supported

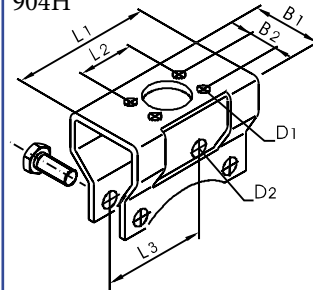
904G



DN	B	L1	D1	Kg
25-100	9,5	35	4	0,01
125-200	14	42	4	0,02

Holding device supported

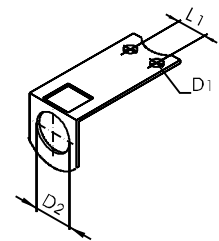
904H



DN	B1	B2	D1	D2	L1	L2	L3	Kg
25	60	17,6	6	9	79,5	30,3	51,5	0,3
32	60	17,6	6	9	83	30,3	55	0,3
40	60	17,6	6	9	86	30,3	58	0,3
50	60	17,6	6	9	95,5	30,3	67,5	0,3
65	60	17,6	6	9	107,5	30,3	79,5	0,4
75/3"	72	17,6	6	9	118	30,3	90	0,5
80	72	17,6	6	9	118	30,3	90	0,5
100	72	17,6	6	9	132	30,3	104	0,6
125	72	25,4	9	11	118	44	90	0,6
150	72	25,4	9	11	132	44	105	0,6
200	72	25,4	9	11	132	44	105	0,6

Holding device proximity switch supported

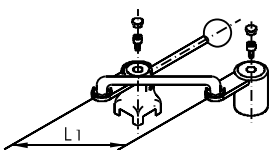
904I



DN	D1	D2	L1
25 - 100	6	18,3	17,6
125 - 200	9	18,3	25,4
25 - 100	6	12,3	17,6
125 - 200	9	12,3	25,4

Butterfly valve combination for T - Butterfly valve "B" and "C"

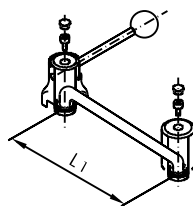
904J



DN	L1
25	99
32	107,5
40	120,2
50	134,4
65	148,5
80	167,7
100	186,7

Butterfly valve combination for T - Butterfly valve "D"

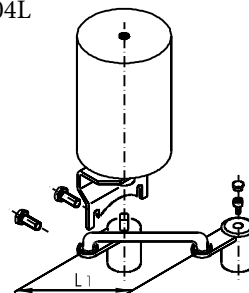
904K



DN	L1
25	140
32	152
40	170
50	190
65	210
80	240
100	264

Butter. v. comb. with actuator for T - Butterfly valve "B" and "C"

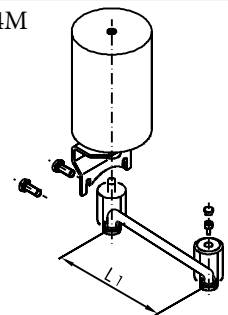
904L



DN	L1
25	99
32	107,5
40	120,2
50	134,4
65	148,5
80	169,7
100	186,7

Butter. v. comb. with actuator for T - Butterfly valve "D"

904M



DN	L1
25	140
32	152
40	170
50	190
65	210
80	240
100	264



Mixproof butterfly valve

- Is designed to be used in applications where mixing of liquids must be precluded.
- Double sealing guarantees absolute operational reliability.
- Field experience shows that any two gaskets/seals or their seats will never fail at a time.
- Controlled by a single actuator, even though each butterfly valve blocks open area individually.
- It is definitely ensured that both fluids are physically isolated from each other.
- Use of standardised components from our butterfly-valve range permits great variability with respect to connections, gasket or sealing materials, and modifications.
- The leakage valve can be operated by an actuator or manually.

Specifications:

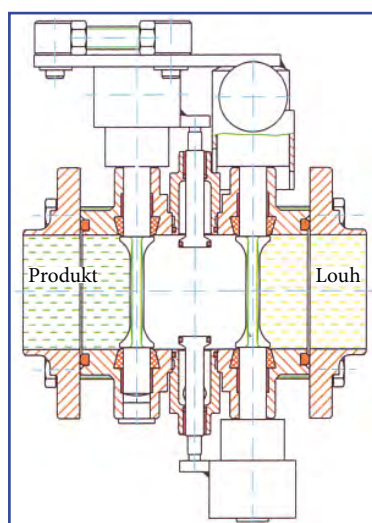
- Valve body surface: inside and outside precision-machined
- Material: parts in contact with product: DIN 1.4404
parts not in contact with product: DIN 1.4301
- Max. allowable pressure: 10 bar - sealing against 10 bar in each case
- Leakage: leakage rate 1 to DIN 3230
- Operating temperature: max. temperature is a function of the particular gasket or seal material
- Gasket/seals material: EPDM, VMQ, FPM or HNBR
- Connections: weld / weld for pipes to DIN 11850
connections to DIN 11864
thread acc. to DIN 11851
- Leakage connection: G3/8" / D: 10 mm

The Kv value:

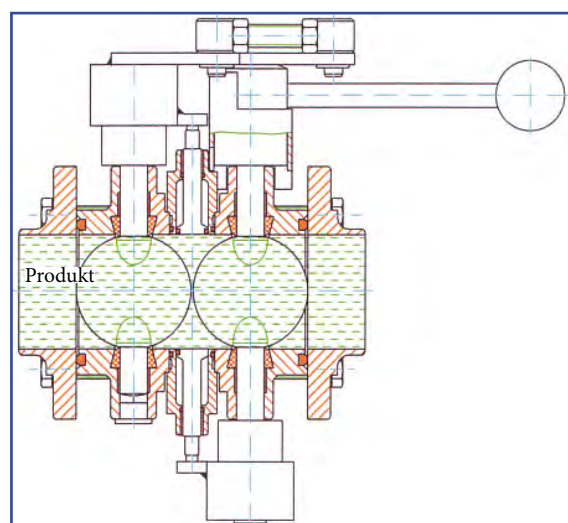
- describes the flowrate (in m³/hr) of water 5-30 OC at a pressure drop (Δp) of 1 bar

DN	25	32	40	50	65	80	100
Kv	14	29	50	102	262	380	626

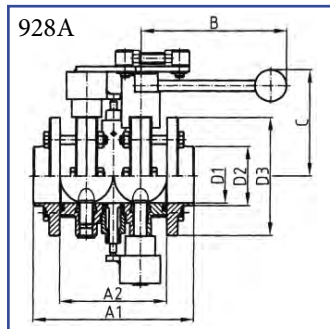
- where $\Delta p = p_1 - p_2$ at $p_1 =$ pressure at valve inlet
 $p_2 =$ pressure at valve outlet
and with the disc (90°) open



When in home position the two butterfly valves are closed and the leakage valves are fully open. The opened leakage valves enable a check to be made to ensure that the butterfly valves seal properly. Leakage as may occur can be discharged/drained into the atmosphere at zero pressure, and mixing of products is ruled out. When the leakage valves are connected to an existing cleaning circuit the leakage space can be cleaned by means of SIP or CIP liquid. On opening the butterfly valves the leakage valves are closed first, and it is only then that the product valves will open. This functional sequence permits flushing losses to be minimised.

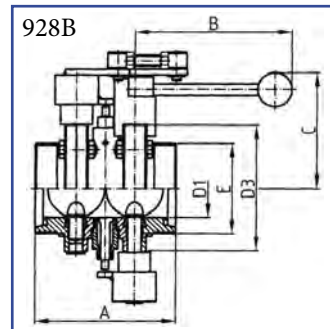


Mixproof butterfly valve manually operated welding ends



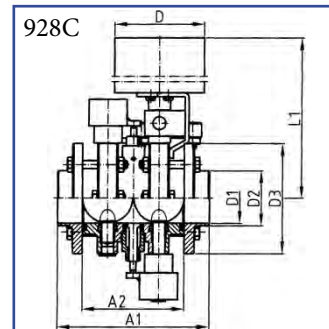
DN	A1	A2	B	C	D1	D2	D3	Kg
25	138	98	107	90	26	31	87	4,51
32	138	98	107	92	32	37	92	4,85
40	148	98	137	94	38	43	97	5,11
50	151	101	137	101	50	55	110	6,01
65	167	117	137	110	66	72	127	7,72
80	194	134	167	123	81	87	142	11,2
100	194	134	167	134	100	106	162	13,5

Mixproof butterfly valve manually operated GG



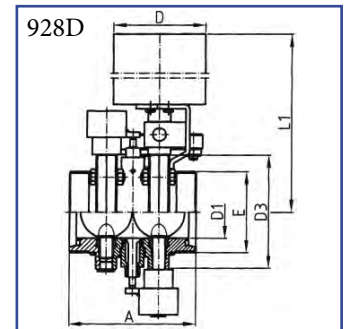
DN	A	B	C	D1	D3	E	Kg
25	112	107	90	26	87	52x1/6"	3,85
32	112	107	92	32	92	58x1/6"	4,04
40	120	137	94	38	97	65x1/6"	4,39
50	123	137	101	50	110	78x1/6"	5,15
65	143	137	110	66	127	95x1/6"	6,76
80	158	167	123	81	142	110x1/4"	9,10
100	162	167	134	100	162	130x1/4"	11,2

Mixproof butterfly valve with pneumatic actuator welding ends



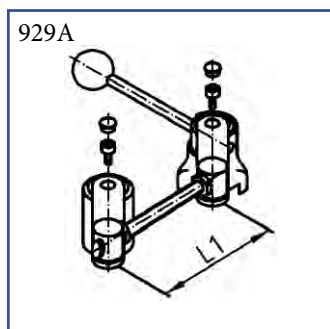
DN	A1	A2	D1	D2	D3	L1	D	Kg
25	138	98	26	31	87	253	85	7,53
32	138	98	32	37	92	255	85	7,94
40	148	98	38	43	97	258	85	8,23
50	151	101	50	55	110	264	85	9,14
65	167	117	66	72	127	315	104	12,8
80	194	134	81	87	142	322	104	16,0
100	194	134	100	106	162	332	104	18,3

Mixproof butterfly valve with pneumatic actuator GG



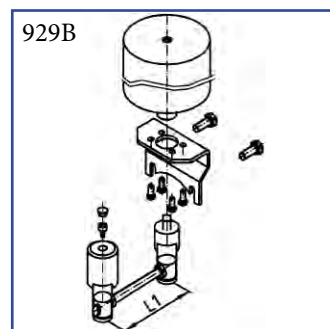
DN	A	D1	D3	E	L1	D	Kg
25	112	26	87	52x1/6"	253	85	6,87
32	112	32	92	58x1/6"	255	85	7,16
40	120	38	97	65x1/6"	258	85	7,51
50	123	50	110	78x1/6"	264	85	8,28
65	143	66	127	95x1/6"	315	104	11,8
80	158	81	142	110x1/4"	322	104	13,9
100	162	100	162	130x1/4"	332	104	16,0

Manually operated combination



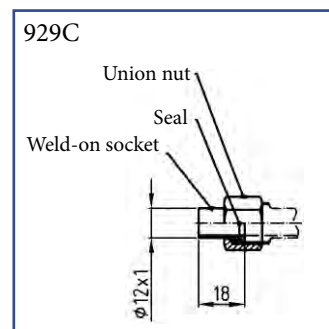
DN	L1
25	48
32	48
40	48
50	51
65	67
80	58
100	58

Combination with pneumatic actuator



DN	L1
25	48
32	48
40	48
50	51
65	67
80	58
100	58

Weld-on union



DN
25
32
40
50
65
80
100

Set of gaskets / seals



DN
25
32
40
50
65
80
100