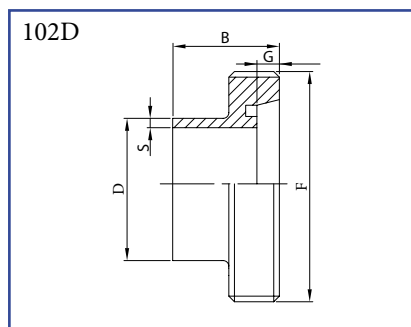


**UNION DIN 11851: standard material AISI 304, another materials AISI 304/L or AISI 316/L**  
**Outside surface polished. Standard complete unions for welding consists of:**  
 cod. 102D (male part), cod. 112D (taper part)  
 cod. 121D (round nut), cod. 131D (seal ring for union)

**UNION SMS: standard material AISI 304/L or AISI 316/L**  
**Outside surface glazed. Standard complete unions for welding consists of:**  
 cod. 102S (male part), cod. 112S (taper part)  
 cod. 121S (round nut), cod. 131S (seal ring for union)

**ON REQUEST:**  
 unions acc. to RJT BS and ISS IDF, material DIN 1.4571 etc.

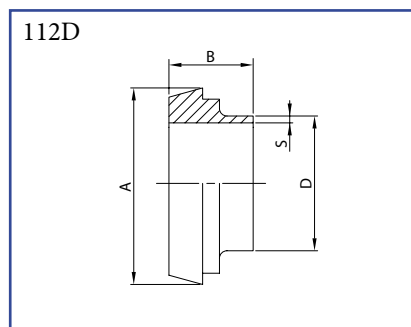
**Male part  
for welding**  
AISI 304, AISI 304/L, AISI 316/L



DN	řada 1 D x S	řada 2* D x S	B	G	F	kg
10	12,0 x 1,0	13,0 x 1,5	21,0	4,0	28-8	0,03
15	18,0 x 1,0	19,0 x 1,5	21,0	4,0	34-8	0,05
20	22,0 x 1,0	23,0 x 1,5	24,0	6,0	44-6	0,10
25	28,0 x 1,5	29,0 x 1,5	29,0	7,0	52-6	0,12
32	34,0 x 1,5	35,0 x 1,5	32,0	7,0	58-6	0,15
40	40,0 x 1,5	41,0 x 1,5	33,0	7,0	65-6	0,18
50	52,0 x 1,5	53,0 x 1,5	35,0	7,0	78-6	0,24
65	70,0 x 2,0		40,0	8,0	95-6	0,34
80	85,0 x 2,0		45,0	8,0	110-4	0,54
100	104,0 x 2,0		54,0	10,0	130-4	0,74
125	129,0 x 2,0		46,0	12,0	160-4	0,99
150	154,0 x 2,0		50,0	13,0	190-4	1,71

\* standard delivery (material AISI 304)

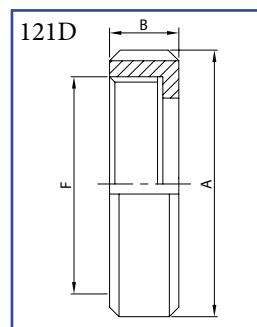
**Taper part  
for welding**  
AISI 304, AISI 304/L, AISI 316/L



DN	řada 1 D x S	řada 2* D x S	A	B	kg
10	12,0 x 1,0	13,0 x 1,5	22,0	17,0	0,02
15	18,0 x 1,0	19,0 x 1,5	28,0	17,0	0,03
20	22,0 x 1,0	23,0 x 1,5	36,0	18,0	0,06
25	28,0 x 1,5	29,0 x 1,5	44,0	22,0	0,09
32	34,0 x 1,5	35,0 x 1,5	50,0	25,0	0,10
40	40,0 x 1,5	41,0 x 1,5	56,0	26,0	0,12
50	52,0 x 1,5	53,0 x 1,5	68,0	28,0	0,18
65	70,0 x 2,0		86,0	32,0	0,28
80	85,0 x 2,0		100,0	37,0	0,38
100	104,0 x 2,0		121,0	44,0	0,66
125	129,0 x 2,0		150,0	34,0	0,77
150	154,0 x 2,0		176,0	37,0	1,01

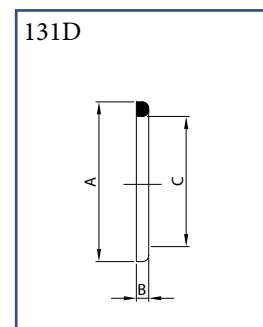
\* standard delivery (material AISI 304)

**Round nut**  
AISI 304, AISI 304/L  
AISI 316/L



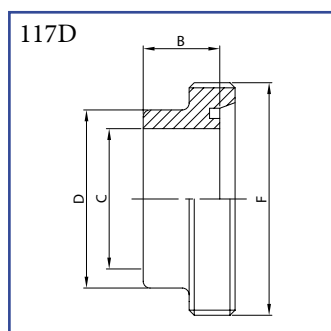
DN	A	B	F	kg
10	38,0	18,0	28-8	0,07
15	44,0	18,0	34-8	0,10
20	54,0	21,0	44-6	0,15
25	63,0	21,0	52-6	0,16
32	70,0	21,0	58-6	0,19
40	78,0	21,0	65-6	0,24
50	92,0	22,0	78-6	0,32
65	112,0	25,0	95-6	0,54
80	127,0	30,0	110-4	0,77
100	148,0	31,0	130-4	0,99
125	178,0	35,0	160-4	1,40
150	210,0	41,0	190-4	1,80

**Seal ring**  
EPDM, NBR, VITON  
SILIKON, PTFE



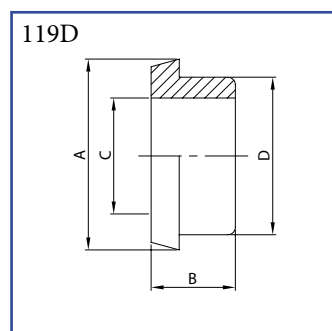
DN	A	B	C
10	20,0	4,0	12,0
15	26,0	4,0	18,0
20	33,0	4,0	23,0
25	40,0	5,0	30,0
32	46,0	5,0	36,0
40	52,0	5,0	42,0
50	64,0	5,0	54,0
65	81,0	5,0	71,0
80	95,0	5,0	85,0
100	114,0	5,0	104,0
125	142,0	6,0	130,0
150	167,0	6,0	155,0

**Male part - ISO  
for welding**  
AISI 304/L, AISI 316/L



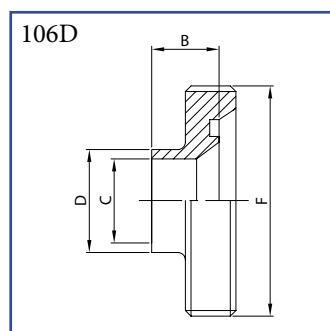
DN	B	C	D	F	kg
10	17,0	10,0	18,0	28-8	0,04
15	17,0	16,0	24,0	34-8	0,06
20	18,0	20,0	30,0	44-6	0,12
25	22,0	25,0	35,0	52-6	0,14
32	25,0	31,0	41,0	58-6	0,18
40	26,0	37,0	48,0	65-6	0,24
50	28,0	49,0	61,0	78-6	0,36
65	32,0	66,0	79,0	95-6	0,42
80	37,0	81,0	93,0	110-4	0,67
100	44,0	100,0	114,0	130-4	1,24
125	34,0	125,0	137,0	160-4	1,60
150	37,0	150,0	163,0	190-4	2,00

**Taper part - ISO  
for welding**  
AISI 304/L, AISI 316/L



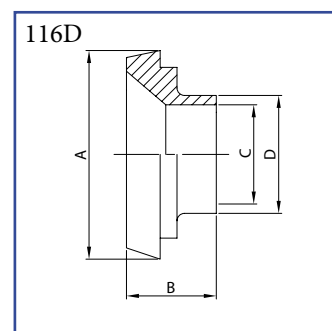
DN	A	B	C	D	kg
10	22,0	17,0	10,0	18,0	0,03
15	28,0	17,0	16,0	24,0	0,04
20	36,0	18,0	20,0	30,0	0,07
25	44,0	22,0	25,0	35,0	0,10
32	50,0	25,0	31,0	41,0	0,14
40	56,0	26,0	37,0	48,0	0,18
50	68,0	28,0	49,0	61,0	0,23
65	86,0	32,0	66,0	79,0	0,36
80	100,0	37,0	81,0	93,0	0,50
100	121,0	44,0	100,0	114,0	0,91
125	150,0	34,0	125,0	137,0	1,30
150	176,0	37,0	150,0	163,0	1,80

**Reducing male part  
for welding**  
AISI 304/L, AISI 316/L



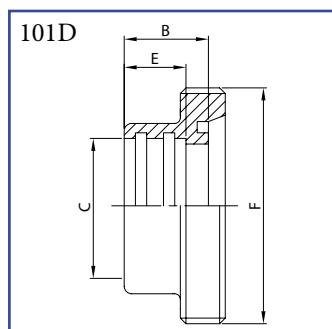
DN	B	C	D	F	kg
32/28	23,0	25,0	28,0	58-6	0,16
40/28	23,0	25,0	28,0	65-6	0,21
40/34	25,0	31,0	34,0	65-6	0,22
50/28	25,0	25,0	28,0	78-6	0,22
50/34	25,0	31,0	34,0	78-6	0,33
50/40	25,0	37,0	40,0	78-6	0,33
65/40	28,0	37,0	40,0	95-6	0,46
65/52	29,0	49,0	52,0	95-6	0,61
80/70	33,0	66,0	70,0	110-4	0,84
100/85	35,0	81,0	85,0	130-4	1,25

**Reducing taper part  
for welding**  
AISI 304/L, AISI 316/L



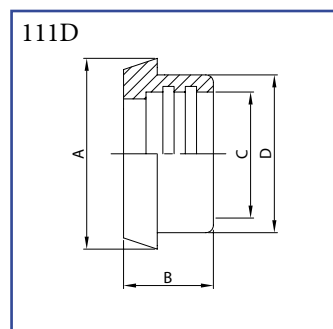
DN	A	B	C	D	kg
32/28	50,0	18,0	25,0	28,0	0,135
40/28	56,0	18,0	25,0	28,0	0,185
40/34	56,0	18,0	31,0	34,0	0,200
50/28	68,0	19,0	25,0	28,0	0,285
50/34	68,0	19,0	31,0	34,0	0,275
50/40	68,0	19,0	37,0	40,0	0,280
65/40	86,0	21,0	37,0	40,0	0,515
65/52	86,0	21,0	49,0	52,0	0,480
80/70	100,0	21,0	66,0	70,0	0,625
100/85	121,0	25,0	81,0	85,0	0,880

Male part  
for expanding  
AISI 304/L, AISI 316/L



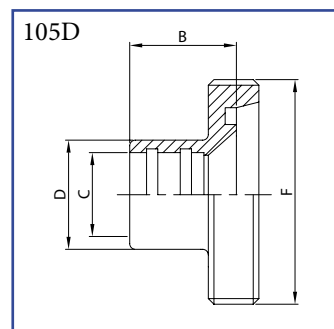
DN	B	C	E	F	kg
10	17,0	12,0	12,0	28-8	0,04
15	17,0	18,0	12,0	34-8	0,06
20	18,0	22,0	12,0	44-6	0,11
25	22,0	28,0	15,0	52-6	0,13
32	25,0	34,0	18,0	58-6	0,17
40	26,0	40,0	20,0	65-6	0,21
50	28,0	52,0	22,0	78-6	0,28
65	32,0	70,0	25,0	95-6	0,38
80	37,0	85,0	28,0	110-4	0,60
100	44,0	104,0	35,0	130-4	1,00

Taper part  
for expanding  
AISI 304/L, AISI 316/L



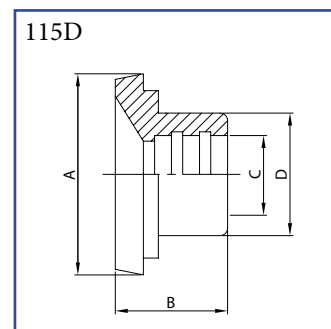
DN	A	B	C	D	kg
10	22,0	17,0	12,0	18,0	0,03
15	28,0	17,0	18,0	24,0	0,03
20	36,0	18,0	22,0	30,0	0,06
25	44,0	22,0	28,0	35,0	0,09
32	50,0	25,0	34,0	41,0	0,11
40	56,0	26,0	40,0	48,0	0,14
50	68,0	28,0	52,0	61,0	0,20
65	86,0	32,0	70,0	79,0	0,30
80	100,0	37,0	85,0	93,0	0,38
100	121,0	44,0	104,0	114,0	0,78

Reducing male part  
for expanding  
AISI 304/L, AISI 316/L



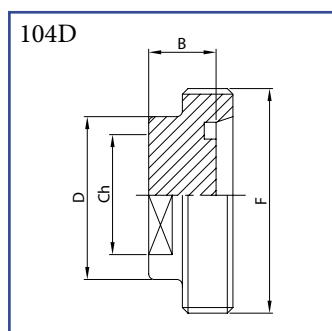
DN	B	C	D	F	kg
32/25	21,0	28,0	35,0	58-6	0,15
40/25	21,0	28,0	35,0	65-6	0,20
40/32	23,0	34,0	41,0	65-6	0,20
50/25	27,0	28,0	35,0	78-6	0,26
50/32	27,0	34,0	41,0	78-6	0,34
50/40	28,0	40,0	48,0	78-6	0,30
65/40	28,0	40,0	48,0	95-6	0,44
65/50	32,0	52,0	61,0	95-6	0,46
80/65	34,0	70,0	79,0	110-4	0,72
100/80	35,0	85,0	93,0	130-4	1,20

Reducing taper part  
for expanding  
AISI 304/L, AISI 316/L



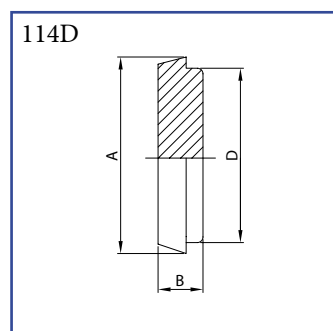
DN	A	B	C	D	kg
32/25	50,0	25,0	28,0	35,0	0,14
40/25	56,0	25,0	28,0	35,0	0,18
40/32	56,0	28,0	34,0	41,0	0,18
50/25	68,0	28,0	28,0	35,0	0,28
50/32	68,0	28,0	34,0	41,0	0,28
50/40	68,0	31,0	40,0	48,0	0,30
65/40	86,0	32,0	40,0	48,0	0,50
65/50	86,0	33,0	52,0	61,0	0,50
80/65	100,0	38,0	70,0	79,0	0,54
100/80	121,0	41,0	85,0	93,0	0,98

Male part  
blind  
AISI 304/L, AISI 316/L



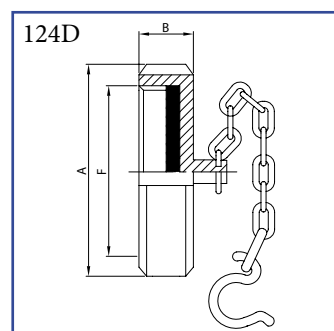
DN	B	Ch	D	F	kg
10	18,0	13,0	18,0	28-8	0,03
15	18,0	19,0	24,0	34-8	0,05
20	18,0	24,0	30,0	44-6	0,10
25	17,0	27,0	35,0	52-6	0,24
32	17,0	32,0	41,0	58-6	0,29
40	17,0	40,0	48,0	65-6	0,37
50	17,0	50,0	61,0	78-6	0,53
65	18,0	65,0	79,0	95-6	0,80
80	22,0	80,0	93,0	110-4	1,05
100	20,0	100,0	114,0	130-4	1,87

Taper part  
blind  
AISI 304/L, AISI 316/L



DN	A	B	D	kg
10	22,0	10,0	18,0	0,03
15	28,0	10,0	24,0	0,04
20	36,0	12,0	30,0	0,09
25	44,0	14,0	35,0	0,14
32	50,0	14,0	41,0	0,18
40	56,0	14,0	48,0	0,23
50	68,0	15,0	61,0	0,38
65	86,0	17,0	79,0	0,70
80	100,0	17,0	93,0	0,97
100	121,0	21,0	114,0	1,75
125	150,0	24,0	137,0	3,12
150	176,0	25,0	163,0	4,45

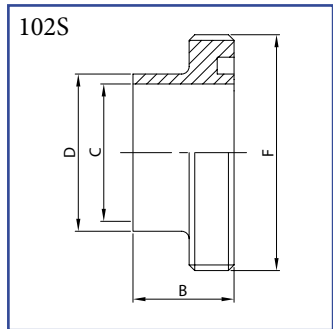
Blind round nut  
with chain\*  
AISI 304/L, AISI 316/L



DN	A	B	F	kg
10	38,0	18,0	28-8	0,10
15	44,0	18,0	34-8	0,12
20	54,0	21,0	44-6	0,18
25	63,0	21,0	52-6	0,20
32	70,0	21,0	58-6	0,25
40	78,0	21,0	65-6	0,29
50	92,0	22,0	78-6	0,37
65	112,0	25,0	95-6	0,70
80	127,0	30,0	110-4	0,97
100	148,0	31,0	130-4	1,40
125	178,0	35,0	160-4	1,80
150	210,0	41,0	190-4	2,20

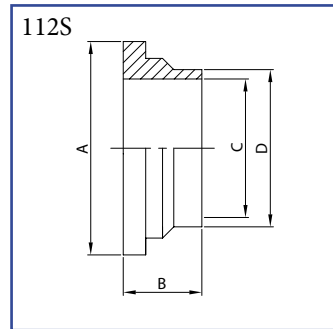
\* on request without

**Male part for welding**  
AISI 304/L, AISI 316/L



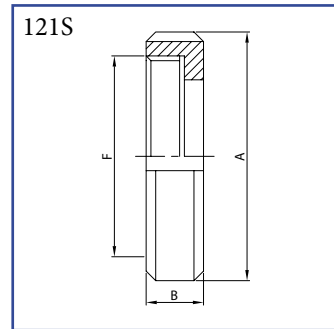
DN	B	C	D	F	Kg
25	20,0	22,4	25,4	40-6	0,07
38	23,0	35,1	38,1	60-6	0,19
51	25,0	47,8	50,8	70-6	0,20
63	30,0	60,5	63,5	85-6	0,37
76	35,0	72,9	76,2	98-6	0,48
101	30,0	97,6	101,6	132-6	1,00
104	30,0	100,0	104,0	125-4	0,60

**Liner for welding**  
AISI 304/L, AISI 316/L



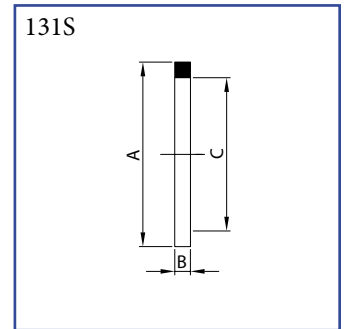
DN	A	B	C	D	Kg
25	35,5	17,0	22,4	25,4	0,02
38	55,0	20,0	35,1	38,1	0,08
51	65,0	20,0	47,8	50,8	0,10
63	80,0	25,0	60,5	63,5	0,18
76	93,0	30,0	72,9	76,2	0,24
101	127,0	32,0	97,6	101,6	0,56
104	118,0	30,0	100,0	104,0	0,34

**Round nut**  
AISI 304/L, AISI 316/L



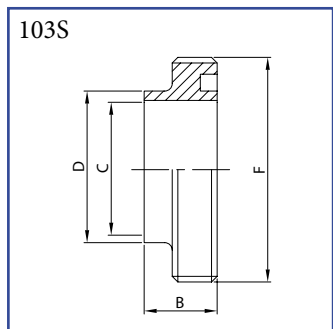
DN	A	B	F	Kg
25	51,0	20,0	40-6	0,11
38	74,0	25,0	60-6	0,27
51	84,0	26,0	70-6	0,30
63	100,0	30,0	85-6	0,49
76	114,0	32,0	98-6	0,64
101	150,0	32,0	132-6	0,98
104	140,0	30,0	125-4	0,78

**Seal ring**  
EPDM, NBR, VITON  
silikon, PTFE



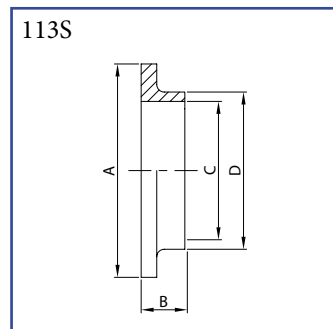
DN	A	B	C
25	32,0	5,5	25,4
38	48,0	5,5	38,1
51	61,0	5,5	50,8
63	73,5	5,5	63,5
76	86,0	5,5	76,2
101	113,5	5,5	101,6
104	116,0	5,5	104,0

**Male part short for welding**  
AISI 304/L, AISI 316/L



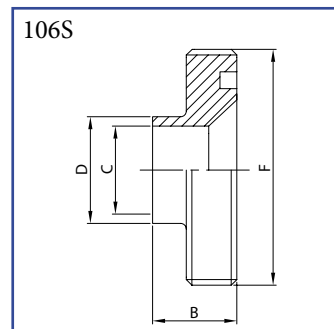
DN	B	C	D	F	Kg
25	15,0	22,4	25,4	40-6	0,06
38	20,0	35,1	38,1	60-6	0,18
51	20,0	47,8	50,8	70-6	0,19
63	24,0	60,5	63,5	85-6	0,35
76	24,0	72,9	76,2	98-6	0,46
101	25,0	97,6	101,6	132-6	0,90
104	25,0	100,0	104,0	125-4	0,55

**Liner short for welding**  
AISI 304/L, AISI 316/L



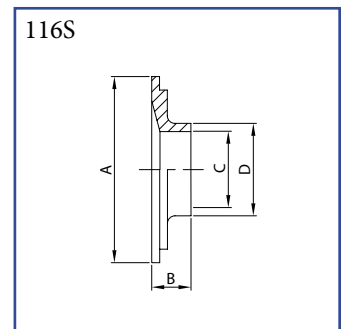
DN	A	B	C	D	Kg
25	35,5	7,5	22,4	25,4	0,03
38	55,0	9,0	35,1	38,1	0,08
51	65,0	9,0	47,8	50,8	0,08
63	80,0	9,0	60,5	63,5	0,09
76	93,0	10,0	72,9	76,2	0,15
101	127,0	12,0	97,6	101,6	0,29
104	118,0	12,0	100,0	104,0	0,18

**Reducing male part for welding**  
AISI 304/L, AISI 316/L



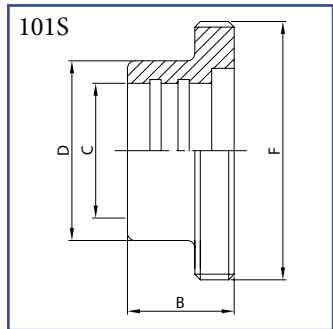
DN	B	C	D	F	Kg
38/25	19,0	22,4	25,4	60-6	0,23
51/25	20,0	22,4	25,4	70-6	0,24
51/38	20,0	35,1	38,1	70-6	0,28
63/38	24,0	35,1	38,1	85-6	0,44
63/51	24,0	47,8	50,8	85-6	0,52
76/38	24,0	35,1	38,1	98-6	0,58
76/51	24,0	47,8	50,8	98-6	0,67
76/63	24,0	60,5	63,5	98-6	0,77
101/63	26,0	60,5	63,5	132-6	1,20
101/76	26,0	72,9	76,2	132-6	1,40

**Reducing liner for welding**  
AISI 304/L, AISI 316/L



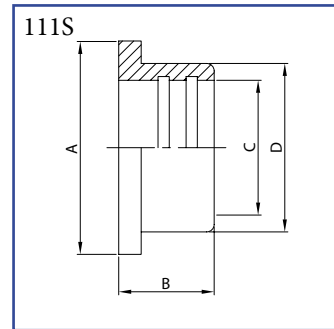
DN	A	B	C	D	Kg
38/25	55,0	17,0	22,4	25,4	0,08
51/25	65,0	17,0	22,4	25,4	0,12
51/38	65,0	20,0	35,1	38,1	0,10
63/38	80,0	20,0	35,1	38,1	0,16
63/51	80,0	20,0	47,8	50,8	0,13
76/38	93,0	20,0	35,1	38,1	0,29
76/51	93,0	20,0	47,8	50,8	0,24
76/63	93,0	20,0	60,5	63,5	0,20
101/63	127,0	25,0	60,5	63,5	0,55
101/76	127,0	30,0	72,9	76,2	0,49

Male part  
for expanding  
AISI 304/L, AISI 316/L



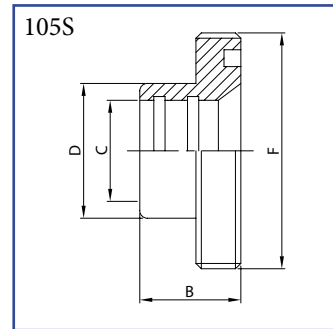
DN	B	C	D	F	Kg
25	20,0	25,4	32,0	40-6	0,07
38	23,0	38,1	48,0	60-6	0,20
51	25,0	50,8	61,0	70-6	0,23
63	30,0	63,5	73,5	85-6	0,39
76	35,0	76,2	86,0	98-6	0,50
101	30,0	101,6	116,0	132-6	1,14
104	30,0	104,0	112,0	125-4	0,54

Liner  
for expanding  
AISI 304/L, AISI 316/L



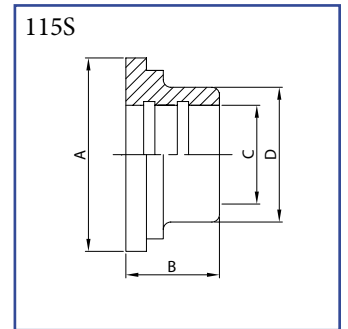
DN	A	B	C	D	Kg
25	35,5	17,0	25,4	32,0	0,05
38	55,5	20,0	38,1	48,0	0,12
51	65,0	20,0	50,8	61,0	0,14
63	80,0	25,0	63,5	73,5	0,22
76	93,0	30,0	76,2	86,0	0,31
101	127,0	30,0	101,6	116,0	0,74
104	118,0	30,0	104,0	112,0	0,40

Reducing male part  
for expanding  
AISI 304/L, AISI 316/L



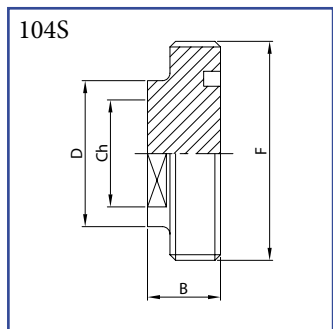
DN	B	C	D	F	Kg
38/25	23,0	25,4	32,0	60-6	0,24
51/25	25,0	25,4	32,0	70-6	0,27
51/38	25,0	38,1	48,0	70-6	0,31
63/38	30,0	38,1	48,0	85-6	0,47
63/51	30,0	50,8	61,0	85-6	0,55
76/38	30,0	38,1	48,0	98-6	0,60
76/51	35,0	50,8	61,0	98-6	0,70
76/63	35,0	63,5	73,5	98-6	0,80
101/63	35,0	63,5	73,5	132-6	1,37
101/76	35,0	76,2	86,0	132-6	1,59

Reducing liner  
for expanding  
AISI 304/L, AISI 316/L



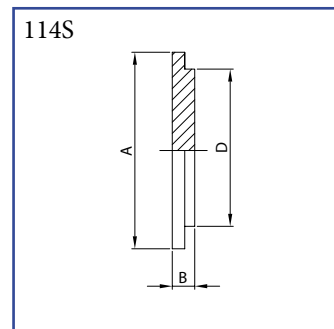
DN	A	B	C	D	Kg
38/25	55,0	17,0	25,4	32,0	0,12
51/25	65,0	17,0	25,4	32,0	0,19
51/38	65,0	20,0	38,1	48,0	0,19
63/38	80,0	20,0	38,1	48,0	0,28
63/51	80,0	20,0	50,8	61,0	0,26
76/38	93,0	20,0	38,1	48,0	0,60
76/51	93,0	20,0	50,8	61,0	0,40
76/63	93,0	25,0	63,5	73,5	0,58
101/63	127,0	25,0	63,5	73,5	0,78
101/76	127,0	30,0	76,2	86,0	0,70

Male part  
blind  
AISI 304/L, AISI 316/L



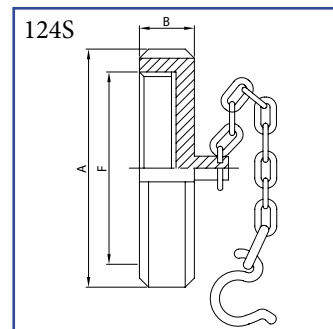
DN	B	Ch	D	F	Kg
25	19,0	25,0	32,0	40-6	0,13
38	23,0	42,0	48,0	60-6	0,35
51	23,0	50,0	61,0	70-6	0,59
63	27,0	60,0	73,5	85-6	1,05
76	27,0	72,0	86,0	98-6	1,45
101	28,0	100,0	116,0	132-6	2,81
104	28,0	100,0	112,0	125-4	2,58

Liner  
blind  
AISI 304/L, AISI 316/L



DN	A	B	D	Kg
25	35,5	7,5	32,0	0,06
38	55,0	8,0	48,0	0,14
51	65,0	9,0	61,0	0,22
63	80,0	9,0	73,5	0,32
76	93,0	11,0	86,0	0,53
101	127,0	13,0	116,0	1,16
104	118,0	13,0	112,0	1,06

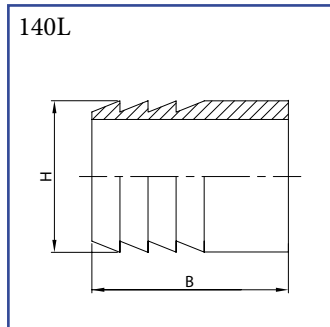
Round nut  
with chain\*  
AISI 304/L, AISI 316/L



DN	A	B	F	Kg
25	51,0	20,0	40-6	0,19
38	74,0	25,0	60-6	0,43
51	84,0	26,0	70-6	0,54
63	100,0	30,0	85-6	0,84
76	114,0	32,0	98-6	1,20
101	150,0	32,0	132-6	2,20
104	140,0	30,0	125-4	2,00

\* on request without

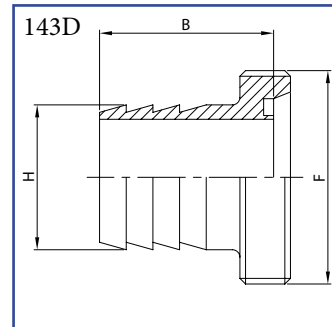
Hose adaptor DIN  
for welding  
AISI 304/L, AISI 316/L



DN	H	B
10	13	31
15	19 (16)*	45
20	21,3	50
25	26,9	60
32	33,7	65
40	42,4 (40)*	75
50	52	80
63	63,5	110
65	76,1	110
80	80	120
100	102	120

\* dimension on request

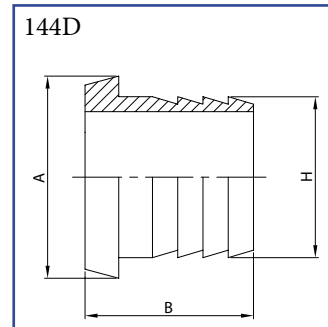
Hose adaptor  
with male part DIN  
AISI 304/L, AISI 316/L



DN	H	B	F
10	13	48	28-8
15	19 (16)*	62	34-8
20	19	63	44-6
25	26,9	82	52-6
32	33,7	90	58-6
40	42,4 (40)*	101	65-6
50	52	108	78-6
63	63,5	142	95-6
65	76,1	142	95-6
80	80	157	110-4
100	102	164	130-4

\* dimension on request

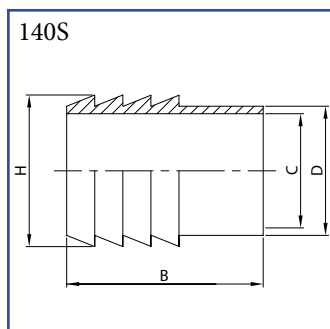
Hose adaptor  
with taper part DIN  
AISI 304/L, AISI 316/L



DN	H	B	A
10	13	48	22
15	19 (16)*	62	28
20	19	63	36
25	26,9	82	44
32	33,7	90	50
40	42,4 (40)*	101	56
50	52	108	68
63	63,5	142	86
65	76,1	142	86
80	80	157	100
100	102	164	121

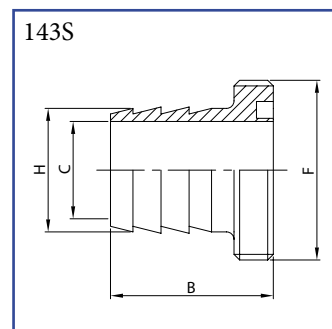
\* dimension on request

Hose adaptor SMS  
for welding  
AISI 304L, AISI 316L



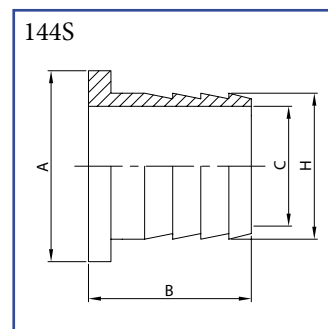
DN	B	C	D	H	Kg
25	49,0	22,4	25,4	28,6	0,10
38	58,0	35,1	38,1	41,3	0,20
51	67,0	47,8	50,8	54,0	0,29
63	81,0	60,5	63,5	66,7	0,32
76	81,0	72,9	76,2	79,4	0,67
101	95,0	97,6	101,6	109,0	1,40

Hose adaptor  
with male part SMS  
AISI 304L, AISI 316L



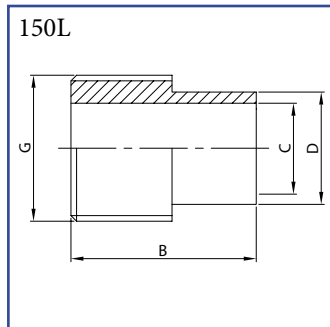
DN	B	C	F	H	Kg
25	41,0	22,4	40-6	28,6	0,17
38	50,0	35,1	60-6	41,3	0,40
51	55,0	47,8	70-6	54,0	0,515
63	69,0	60,5	85-6	66,7	0,71
76	69,0	72,9	98-6	79,4	1,17
101	85,0	97,6	132-6	109,0	2,54

Hose adaptor  
with liner SMS  
AISI 304L, AISI 316L



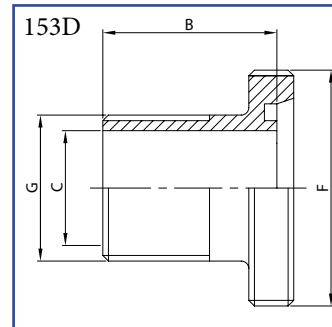
DN	A	B	C	H	Kg
25	35,5	33,5	22,4	28,6	0,14
38	55,0	39,0	35,1	41,3	0,32
51	65,0	44,0	47,8	54,0	0,43
63	80,0	54,0	60,5	66,7	0,54
76	93,0	55,0	72,9	79,4	0,98
101	127,0	71,0	97,6	109,0	2,14

Adaptor  
thread BSP / for welding DIN  
AISI 304/L, AISI 316/L



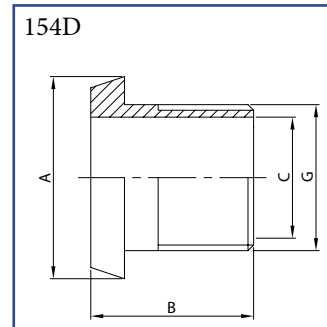
DN	B	C	D	G	Kg
28	30,0	25,0	28,0	1"	0,05
34	33,0	31,0	34,0	1 1/4"	0,08
40	38,0	37,0	40,0	1 1/2"	0,11
52	43,0	49,0	52,0	2"	0,20
70	50,0	66,0	70,0	2 1/2"	0,24
80	58,0	81,0	85,0	3"	0,32
100	75,0	100	104	4"	0,85

Adaptor  
thread BSP / male part DIN  
AISI 304/L, AISI 316/L



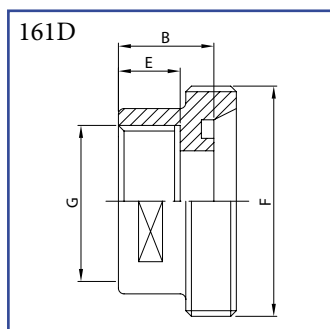
DN	B	C	F	G	Kg
25	43,0	25,0	52-6	1"	0,18
32	43,0	31,0	58-6	1 1/4"	0,25
40	43,0	37,0	65-6	1 1/2"	0,32
50	43,0	49,0	78-6	2"	0,48
65	44,0	66,0	95-6	2 1/2"	0,62
80	48,0	81,0	110-4	3"	0,92
100	46,0	97,6	130-4	4"	1,85

Adaptor  
taper part DIN / thread BSP  
AISI 304/L, AISI 316/L



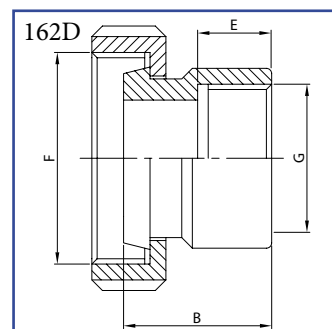
DN	A	B	C	G	Kg
25	44,0	43,0	25,0	1"	0,13
32	50,0	43,0	31,0	1 1/4"	0,19
40	56,0	43,0	37,0	1 1/2"	0,25
50	68,0	44,0	49,0	2"	0,40
65	86,0	46,0	66,0	2 1/2"	0,54
80	100,0	46,0	81,0	3"	0,70
100	121,0	50,0	97,6	4"	1,63

Adaptor  
thread BSP / male part DIN  
AISI 304/L, AISI 316/L



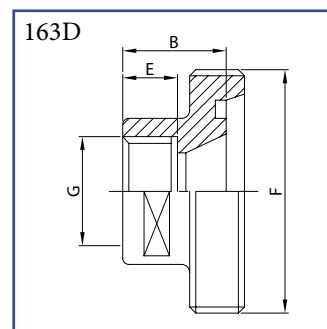
DN	B	E	F	G	Kg
25	24,0	17,0	52-6	1"	0,22
32	28,0	17,0	58-6	1 1/4"	0,27
40	28,0	22,0	65-6	1 1/2"	0,32
50	33,0	22,0	78-6	2"	0,40
65	34,0	24,0	95-6	2 1/2"	0,51
80	37,0	27,0	110-4	3"	0,74
100	42,0	32,0	130-4	4"	1,15

Adaptor  
round nut DIN / thread BSP  
AISI 304/L, AISI 316/L



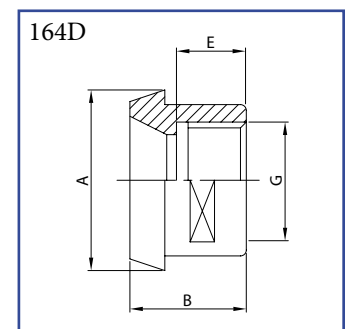
DN	B	E	F	G	Kg
25	32,0	17,0	52-6	1"	0,33
32	35,0	17,0	58-6	1 1/4"	0,41
40	37,0	22,0	65-6	1 1/2"	0,50
50	41,0	22,0	78-6	2"	0,85
65	46,0	24,0	95-6	2 1/2"	1,25
80	49,0	27,0	110-4	3"	1,64
100	60,0	32,0	130-4	4"	2,20

Adaptor  
thread BSP / male part DIN  
AISI 304/L, AISI 316/L



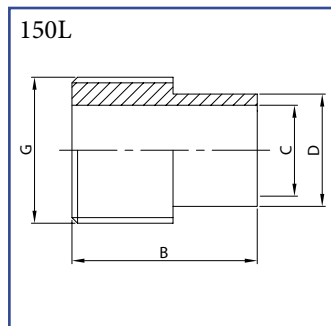
DN	B	E	F	G	Kg
25	24,0	17,0	52-6	3/4"	0,05
32	28,0	17,0	58-6	1"	0,07
40	28,0	22,0	65-6	1 1/4"	0,12
50	33,0	22,0	78-6	1 1/2"	0,14
65	34,0	24,0	95-6	2"	0,18
80	37,0	27,0	110-4	2 1/2"	0,22
100	42,0	32,0	130-4	3 1/2"	0,29

Adaptor  
taper part DIN / thread BSP  
AISI 304/L, AISI 316/L



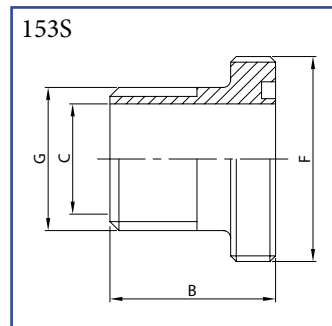
DN	A	B	E	G	Kg
25	44,0	22,0	17,0	3/4"	0,10
32	50,0	25,0	17,0	1"	0,12
40	56,0	26,0	22,0	1 1/4"	0,15
50	68,0	28,0	22,0	1 1/2"	0,21
65	86,0	32,0	24,0	2"	0,31
80	100,0	37,0	27,0	2 1/2"	0,39
100	121,0	44,0	32,0	3 1/2"	0,79

Adaptor  
thread BSP / for welding SMS  
AISI 304/L, AISI 316/L



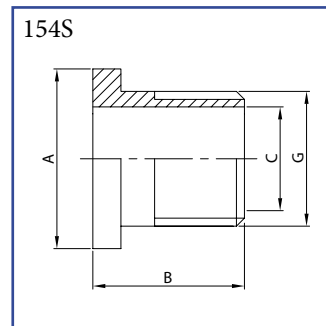
DN	B	C	D	G	Kg
25	38,0	22,4	25,4	1"	0,07
38	45,0	35,1	38,1	1 1/2"	0,14
51	52,0	47,8	50,8	2"	0,20
63	60,0	60,5	63,5	2 1/2"	0,35
76	66,0	72,9	76,2	3"	0,54
101	75,0	97,6	101,6	4"	0,85

Adaptor  
thread BSP / male part SMS  
AISI 304/L, AISI 316/L



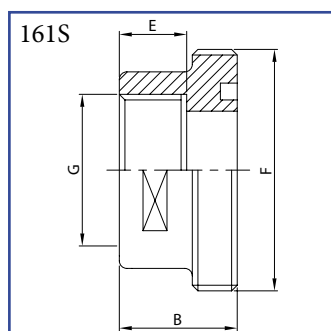
DN	B	C	F	G	Kg
25	30,0	22,4	40-6	1"	0,14
38	42,0	35,1	60-6	1 1/2"	0,34
51	47,0	47,8	70-6	2"	0,43
63	55,0	60,5	85-6	2 1/2"	0,74
76	58,0	72,9	98-6	3"	1,04
101	72,0	97,6	132-6	4"	1,99

Adaptor  
liner SMS / thread BSP  
AISI 304/L, AISI 316/L



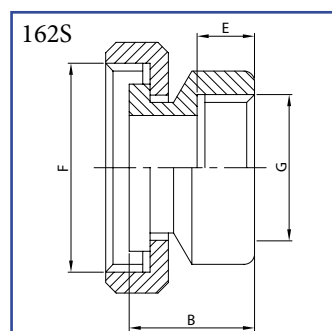
DN	A	B	C	G	Kg
25	35,5	28,5	22,4	1"	0,12
38	55,0	29,0	35,1	1 1/2"	0,26
51	65,0	34,0	47,8	2"	0,34
63	80,0	34,0	60,5	2 1/2"	0,57
76	93,0	40,0	72,9	3"	0,85
101	127,0	41,0	97,6	4"	1,59

Adaptor  
thread BSP / male part SMS  
AISI 304/L, AISI 316/L



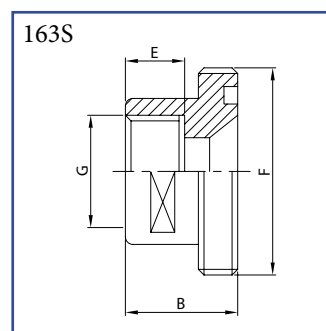
DN	B	E	F	G	Kg
25	23,0	17,0	40-6	1"	0,10
38	32,0	19,0	60-6	1 1/2"	0,23
51	36,0	23,0	70-6	2"	0,27
63	42,0	24,0	85-6	2 1/2"	0,42
76	45,0	27,0	98-6	3"	0,54
101	50,0	30,0	132-6	4"	1,23

Adaptor  
round nut SMS / thread BSP  
AISI 304/L, AISI 316/L



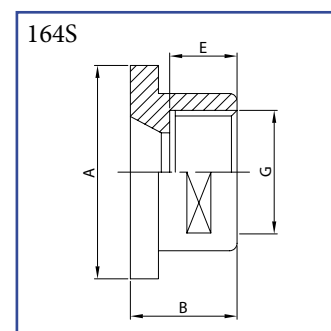
DN	B	E	F	G	Kg
25	30,0	18,0	40-6	1"	0,20
38	33,0	18,0	60-6	1 1/2"	0,47
51	35,0	23,0	70-6	2"	0,54
63	40,0	23,0	85-6	2 1/2"	1,02
76	47,0	28,0	98-6	3"	1,37
101	54,0	28,0	132-6	4"	2,09

Adaptor  
thread BSP / male part SMS  
AISI 304/L, AISI 316/L



DN	B	E	F	G	Kg
25	26,0	18,0	40-6	3/4"	0,07
38	30,0	18,0	60-6	1 1/4"	0,20
51	35,0	23,0	70-6	1 1/2"	0,23
63	39,0	23,0	85-6	2"	0,39
76	44,0	28,0	98-6	2 1/2"	0,50
101	45,0	28,0	132-6	3 1/2"	1,14

Adaptor  
liner SMS / thread BSP  
AISI 304/L, AISI 316/L



DN	A	B	E	G	Kg
25	35,5	28,5	18,0	3/4"	0,05
38	55,0	29,0	18,0	1 1/4"	0,12
51	65,0	34,0	23,0	1 1/2"	0,14
63	80,0	34,0	23,0	2"	0,22
76	93,0	40,0	28,0	2 1/2"	0,31
101	127,0	41,0	28,0	3 1/2"	0,74