



**SHORT, LONG
REDUCING, MALE-FEMALE ENDS ...
DIN / SMS / ISO / ASME / CLAMP ...**



On demand:
other materials / dimensions / with
CLAMP ends ...

Inner surface on demand:

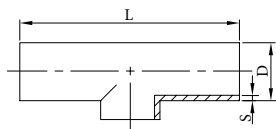
E-polished
Ra ≤ 0,8/1,6 μm
Ra ≤ 0,8/0,8 μm
Ra ≤ 0,6 μm
Ra ≤ 0,5 μm
Ra ≤ 0,4 μm
Ra ≤ 0,25 μm

Outer surface on demand:

standard
grinded
polished

T-piece short DIN row 1
for welding
AISI 304/L, AISI 316/L

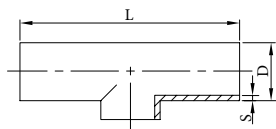
240D-1



DN	D	S	L	kg
10	see long code 200D-1			
15	18,0	1,5	70,0	0,04
20	22,0	1,5	80,0	0,06
25	28,0	1,5	100,0	0,09
32	34,0	1,5	110,0	0,12
40	40,0	1,5	120,0	0,15
50	52,0	1,5	140,0	0,24
65	70,0	2,0	160,0	0,46
80	85,0	2,0	180,0	0,68
100	104,0	2,0	200,0	0,92
125	129,0	2,0	375,0	1,97
150	154,0	2,0	450,0	2,89
200	204,0	2,0	600,0	5,46

T-piece short DIN row 2
for welding
AISI 304/L, AISI 316/L

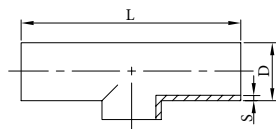
240D-2



DN	D	S	L	kg
10	13,0	1,5	52,0	0,04
15	19,0	1,5	70,0	0,04
20	23,0	1,5	80,0	0,06
25	29,0	1,5	100,0	0,09
32	35,0	1,5	110,0	0,12
40	41,0	1,5	120,0	0,15
50	53,0	1,5	140,0	0,24

T-piece short SMS
for welding
AISI 304/L, AISI 316/L

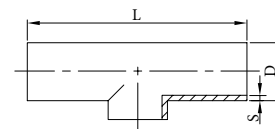
240S



DN	D	S	L	kg
25	25,4	1,5	110,0	0,19
38	38,1	1,5	140,0	0,32
51	50,8	1,5	164,0	0,47
63	63,5	1,5	210,0	0,68
76	76,2	1,65	220,0	1,03
101	101,6	2,0	300,0	1,85

T-piece short ISO
for welding
AISI 304/L, AISI 316/L

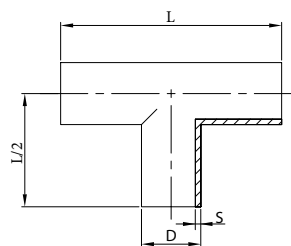
240I



DN	D	S	L	kg
15	21,3	2,0	50,0	0,04
20	26,9	2,0	58,0	0,06
25	33,7	2,0	76,0	0,11
32	42,4	2,0	96,0	0,13
40	48,3	2,0	114,0	0,24
50	60,3	2,0	128,0	0,35
65	76,1	2,0	152,0	0,37
80	88,9	2,0	172,0	0,63
100	114,3	2,0	210,0	1,10
125	139,7	2,0	248,0	1,54
150	168,3	2,0	286,0	2,13

T-piece long DIN row 1
for welding
AISI 304/L, AISI 316/L

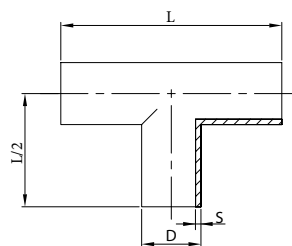
200D-1



DN	D	S	L	L/2	kg
10	12,0	1,5	52,0	26,0	0,04
15	18,0	1,5	70,0	35,0	0,08
20	22,0	1,5	80,0	40,0	0,10
25	28,0	1,5	100,0	50,0	0,12
32	34,0	1,5	110,0	55,0	0,18
40	40,0	1,5	120,0	60,0	0,24
50	52,0	1,5	140,0	70,0	0,31
65	70,0	2,0	160,0	80,0	0,65
80	85,0	2,0	180,0	90,0	1,07
100	104,0	2,0	200,0	100,0	1,85
125	129,0	2,0	248,0	124,0	2,25
150	154,0	2,0	450,0	225,0	3,88
200	204,0	2,0	600,0	300,0	7,10

T-piece long DIN row 2
for welding
AISI 304/L, AISI 316/L

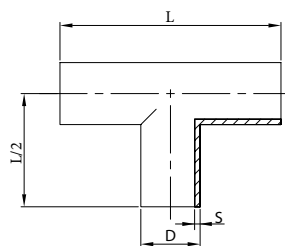
200D-2



DN	D	S	L	L/2	kg
10	13,0	1,5	52,0	26,0	0,04
15	19,0	1,5	70,0	35,0	0,08
20	23,0	1,5	80,0	40,0	0,09
25	29,0	1,5	100,0	50,0	0,10
32	35,0	1,5	110,0	55,0	0,13
40	41,0	1,5	120,0	60,0	0,21
50	53,0	1,5	140,0	70,0	0,29

T-piece long SMS
for welding
AISI 304/L, AISI 316/L

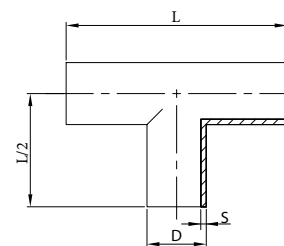
200S



DN	D	S	L	L/2	kg
25	25,4	1,5	110,0	55,0	0,19
38	38,1	1,5	140,0	70,0	0,32
51	50,8	1,5	164,0	82,0	0,47
63	63,5	1,5	210,0	105,0	0,68
76	76,2	1,65	220,0	110,0	1,03
101	101,6	2,0	300,0	150,0	1,85

T-piece long ISO
for welding
AISI 304/L, AISI 316/L

200I



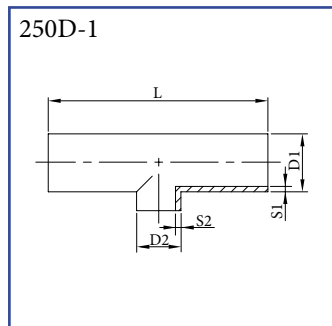
DN	D	S	L	L/2	kg
15	21,3				
20	26,9				
25	33,7				
32	42,4				
40	48,3				
50	60,3				
65	76,1				
80	88,9				
100	114,3				
125	139,7				
150	168,3				

on demand

REDUCING T-PIECES

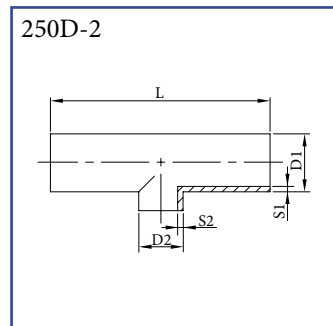
str. H47

T-piece short DIN row 1 reducing
AISI 304/L, AISI 316/L



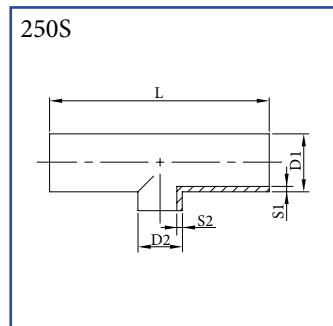
DN	D1	D2	S1	S2	L	kg
25/10	28,0	12,0	1,5	1,5	100,0	0,09
25/15	28,0	18,0	1,5	1,5	100,0	0,09
25/20	28,0	22,0	1,5	1,5	100,0	0,09
32/10	34,0	12,0	1,5	1,5	110,0	0,12
32/15	34,0	18,0	1,5	1,5	110,0	0,12
32/20	34,0	22,0	1,5	1,5	110,0	0,12
32/25	34,0	28,0	1,5	1,5	110,0	0,12
40/10	40,0	12,0	1,5	1,5	120,0	0,15
40/15	40,0	18,0	1,5	1,5	120,0	0,15
40/20	40,0	22,0	1,5	1,5	120,0	0,15
40/25	40,0	28,0	1,5	1,5	120,0	0,15
40/32	40,0	34,0	1,5	1,5	120,0	0,15
50/10	52,0	12,0	1,5	1,5	140,0	0,24
50/15	52,0	18,0	1,5	1,5	140,0	0,24
50/20	52,0	22,0	1,5	1,5	140,0	0,24
50/25	52,0	28,0	1,5	1,5	140,0	0,24
50/32	52,0	34,0	1,5	1,5	140,0	0,24
50/40	52,0	40,0	1,5	1,5	140,0	0,24
65/25	70,0	28,0	2,0	1,5	160,0	0,47
65/40	70,0	40,0	2,0	1,5	160,0	0,46
65/50	70,0	52,0	2,0	1,5	160,0	0,46
80/25	85,0	28,0	2,0	1,5	180,0	0,70
80/40	85,0	40,0	2,0	1,5	180,0	0,70
80/50	85,0	52,0	2,0	1,5	180,0	0,68
80/65	85,0	70,0	2,0	2,0	180,0	0,68
100/25	104,0	28,0	2,0	1,5	200,0	1,00
100/40	104,0	40,0	2,0	1,5	200,0	1,00
100/50	104,0	52,0	2,0	1,5	200,0	1,00
100/65	104,0	70,0	2,0	2,0	200,0	0,97
100/80	104,0	85,0	2,0	2,0	200,0	0,97
125/25	129,0	28,0	2,0	1,5	374,0	2,00
125/40	129,0	40,0	2,0	1,5	374,0	2,00
125/50	129,0	52,0	2,0	1,5	374,0	2,00
125/65	129,0	70,0	2,0	2,0	374,0	1,97
125/80	129,0	85,0	2,0	2,0	374,0	1,97
125/100	129,0	104,0	2,0	2,0	374,0	1,97
150/25	154,0	28,0	2,0	1,5	450,0	2,95
150/40	154,0	40,0	2,0	1,5	450,0	2,95
150/50	154,0	53,0	2,0	1,5	450,0	2,95

T-piece short DIN row 2 reducing
AISI 304/L, AISI 316/L



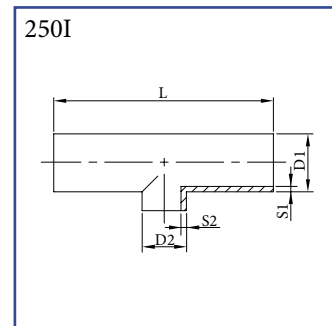
DN	D1	D2	S1	S2	L	kg
25/10	29,0	13,0	1,5	1,5	100,0	0,09
25/15	29,0	19,0	1,5	1,5	100,0	0,09
25/20	29,0	23,0	1,5	1,5	100,0	0,09
32/10	35,0	13,0	1,5	1,5	110,0	0,12
32/15	35,0	19,0	1,5	1,5	110,0	0,12
32/20	35,0	23,0	1,5	1,5	110,0	0,12
32/25	35,0	29,0	1,5	1,5	110,0	0,12
40/10	41,0	13,0	1,5	1,5	120,0	0,15
40/15	41,0	19,0	1,5	1,5	120,0	0,15
40/20	41,0	23,0	1,5	1,5	120,0	0,15
40/25	41,0	29,0	1,5	1,5	120,0	0,15
40/32	41,0	35,0	1,5	1,5	120,0	0,15
50/10	53,0	13,0	1,5	1,5	140,0	0,24
50/15	53,0	19,0	1,5	1,5	140,0	0,24
50/20	53,0	23,0	1,5	1,5	140,0	0,24
50/25	53,0	29,0	1,5	1,5	140,0	0,24
50/32	53,0	35,0	1,5	1,5	140,0	0,24
50/40	53,0	41,0	1,5	1,5	140,0	0,24
65/25	70,0	29,0	2,0	1,5	160,0	0,47
65/32	70,0	35,0	2,0	1,5	160,0	0,47
65/40	70,0	41,0	2,0	1,5	160,0	0,46
65/50	70,0	53,0	2,0	1,5	160,0	0,46
80/25	85,0	29,0	2,0	1,5	180,0	0,70
80/32	85,0	35,0	2,0	1,5	180,0	0,70
80/40	85,0	41,0	2,0	1,5	180,0	0,68
80/50	85,0	53,0	2,0	1,5	180,0	0,68
100/25	104,0	29,0	2,0	1,5	200,0	1,00
100/32	104,0	35,0	2,0	1,5	200,0	1,00
100/40	104,0	41,0	2,0	1,5	200,0	1,00
100/50	104,0	53,0	2,0	1,5	200,0	1,00
125/25	129,0	29,0	2,0	1,5	374,0	2,00
125/32	129,0	35,0	2,0	1,5	374,0	2,00
125/40	129,0	41,0	2,0	1,5	374,0	2,00
125/50	129,0	53,0	2,0	1,5	374,0	2,00
150/25	154,0	29,0	2,0	1,5	450,0	2,95
150/40	154,0	41,0	2,0	1,5	450,0	2,95
150/50	154,0	53,0	2,0	1,5	450,0	2,95

T-piece short SMS reducing
AISI 304/L, AISI 316/L



DN	D1	D2	S1	S2	L	kg
38/25	38,1	25,4	1,5	1,5	140,0	0,32
51/25	50,8	25,4	1,5	1,5	164,0	0,47
51/38	50,8	38,1	1,5	1,5	164,0	0,47
63/38	63,5	38,1	1,5	1,5	210,0	0,68
63/51	63,5	50,8	1,5	1,5	210,0	0,68
76/38	76,2	38,1	1,65	1,5	220,0	1,03
76/51	76,2	50,8	1,65	1,5	220,0	1,03
76/63	76,2	63,5	1,65	1,5	220,0	1,03
101/63	101,6	63,5	2,0	1,65	300,0	1,85
101/76	101,6	76,2	2,0	1,65	300,0	1,85

T-piece short ISO reducing
AISI 304/L, AISI 316/L



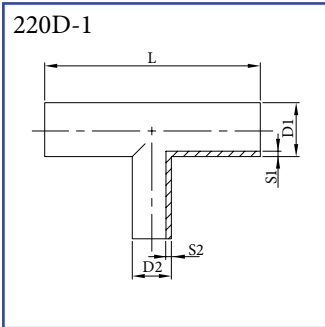
DN	D1	D2	S1	S2	L	kg
20/15	26,9	21,3	2,0	2,0	57,0	0,34
25/15	33,7	21,3	2,0	2,0	76,0	0,25
25/20	33,7	26,9	2,0	2,0	76,0	0,25
32/15	42,4	21,3	2,0	2,0	96,0	0,79
32/20	42,4	26,9	2,0	2,0	96,0	0,79
32/25	42,4	33,7	2,0	2,0	96,0	0,60
40/15	48,3	21,3	2,0	2,0	115,0	1,10
40/20	48,3	26,9	2,0	2,0	115,0	1,00
40/25	48,3	33,7	2,0	2,0	115,0	0,80
40/32	48,3	42,4	2,0	2,0	115,0	0,80
50/15	60,3	21,3	2,0	2,0	127,0	1,30
50/20	60,3	26,9	2,0	2,0	127,0	1,20
50/25	60,3	33,7	2,0	2,0	127,0	1,10
50/32	60,3	42,4	2,0	2,0	127,0	1,10
50/40	60,3	48,3	2,0	2,0	127,0	1,10
65/50	76,1	60,3				
80/50	88,9	60,3				
80/65	88,9	76,1				
100/65	114,3	76,1				
100/80	114,3	88,9				
125/80	139,7	88,9				
125/100	139,7	114,3				
150/100	168,3	114,3				
150/125	168,3	139,7				

on demand

REDUCING T-PIECES LONG

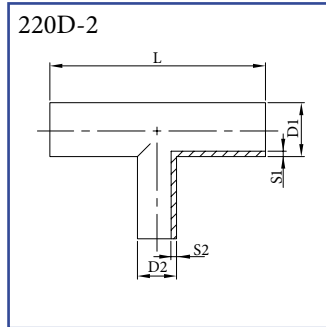
str. H48

T-piece long DIN row 1
reducing
AISI 304/L, AISI 316/L



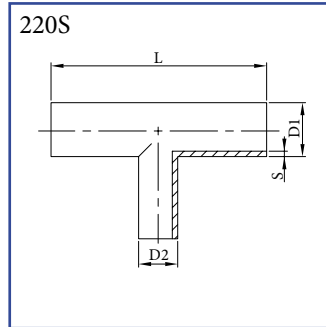
DN	D1	D2	S1	S2	L	kg
25/20	28,0	22,0	1,5	1,5	100,0	0,14
32/25	34,0	28,0	1,5	1,5	110,0	0,18
40/25	40,0	28,0	1,5	1,5	120,0	0,24
40/32	40,0	34,0	1,5	1,5	120,0	0,24
50/25	52,0	28,0	1,5	1,5	140,0	0,31
50/32	52,0	34,0	1,5	1,5	140,0	0,31
50/40	52,0	40,0	1,5	1,5	140,0	0,31
65/25	70,0	28,0	2,0	1,5	160,0	0,65
65/32	70,0	34,0	2,0	1,5	160,0	0,65
65/40	70,0	40,0	2,0	1,5	160,0	0,65
65/50	70,0	52,0	2,0	1,5	160,0	0,65
80/25	85,0	28,0	2,0	1,5	180,0	1,07
80/32	85,0	34,0	2,0	1,5	180,0	1,07
80/40	85,0	40,0	2,0	1,5	180,0	1,07
80/50	85,0	52,0	2,0	1,5	180,0	1,07
80/65	85,0	70,0	2,0	2,0	180,0	1,07
100/25	104,0	28,0	2,0	1,5	200,0	1,85
100/32	104,0	34,0	2,0	1,5	200,0	1,85
100/40	104,0	40,0	2,0	1,5	200,0	1,85
100/50	104,0	52,0	2,0	1,5	200,0	1,85
100/65	104,0	70,0	2,0	2,0	200,0	1,85
100/80	104,0	85,0	2,0	2,0	200,0	1,85
125/25	129,0	28,0	2,0	1,5	374,0	1,97
125/32	129,0	34,0	2,0	1,5	374,0	1,97
125/40	129,0	40,0	2,0	1,5	374,0	1,97
125/50	129,0	52,0	2,0	1,5	374,0	1,97
125/65	129,0	70,0	2,0	2,0	374,0	1,97
125/80	129,0	85,0	2,0	2,0	374,0	1,97
125/100	129,0	104,0	2,0	2,0	374,0	1,97
150/25	154,0	28,0	2,0	1,5	450,0	2,89
150/32	154,0	34,0	2,0	1,5	450,0	2,89
150/40	154,0	40,0	2,0	1,5	450,0	2,89
150/50	154,0	52,0	2,0	1,5	450,0	2,89
150/65	154,0	70,0	2,0	2,0	450,0	2,89
150/80	154,0	85,0	2,0	2,0	450,0	2,89
150/100	154,0	104,0	2,0	2,0	450,0	2,89
150/125	154,0	129,0	2,0	2,0	450,0	2,89

T-piece long DIN row 2
reducing
AISI 304/L, AISI 316/L



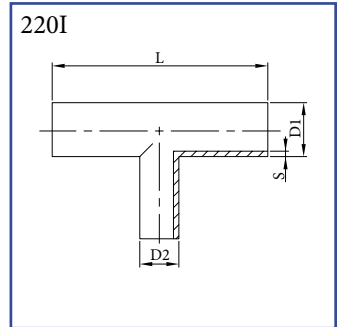
DN	D1	D2	S1	S2	L	kg
25/20	29,0	23,0	1,5	1,5	100,0	0,14
32/25	35,0	29,0	1,5	1,5	110,0	0,18
40/25	41,0	29,0	1,5	1,5	120,0	0,24
40/32	41,0	35,0	1,5	1,5	120,0	0,24
50/25	53,0	29,0	1,5	1,5	140,0	0,31
50/32	53,0	35,0	1,5	1,5	140,0	0,31
50/40	53,0	41,0	1,5	1,5	140,0	0,31
65/25	70,0	29,0	2,0	1,5	160,0	0,65
65/32	70,0	35,0	2,0	1,5	160,0	0,65
65/40	70,0	41,0	2,0	1,5	160,0	0,65
65/50	70,0	53,0	2,0	1,5	160,0	0,65
80/25	85,0	29,0	2,0	1,5	180,0	1,07
80/32	85,0	35,0	2,0	1,5	180,0	1,07
80/40	85,0	41,0	2,0	1,5	180,0	1,07
80/50	85,0	53,0	2,0	1,5	180,0	1,07
100/25	104,0	29,0	2,0	1,5	200,0	1,85
100/32	104,0	35,0	2,0	1,5	200,0	1,85
100/40	104,0	41,0	2,0	1,5	200,0	1,85
100/50	104,0	53,0	2,0	1,5	200,0	1,85
125/25	129,0	29,0	2,0	1,5	374,0	2,00
125/32	129,0	35,0	2,0	1,5	374,0	2,00
125/40	129,0	41,0	2,0	1,5	374,0	2,00
125/50	129,0	53,0	2,0	1,5	374,0	2,00
150/25	154,0	29,0	2,0	1,5	450,0	2,95
150/32	154,0	35,0	2,0	1,5	450,0	2,95
150/40	154,0	41,0	2,0	1,5	450,0	2,95
150/50	154,0	53,0	2,0	1,5	450,0	2,95

T-piece long SMS
reducing
AISI 304/L, AISI 316/L



DN	D1	D2	S	L	kg
38/25	38,1	25,4	1,5	140,0	0,32
51/25	50,8	25,4	1,5	164,0	0,47
51/38	50,8	38,1	1,5	164,0	0,47
63/38	63,5	38,1	1,5	210,0	0,68
63/51	63,5	50,8	1,5	210,0	0,68
76/38	76,2	38,1	1,65	220,0	1,03
76/51	76,2	50,8	1,65	220,0	1,03
76/63	76,2	63,5	1,65	220,0	1,03
101/63	101,6	63,5	2,0	300,0	1,85
101/76	101,6	76,2	2,0	300,0	1,85

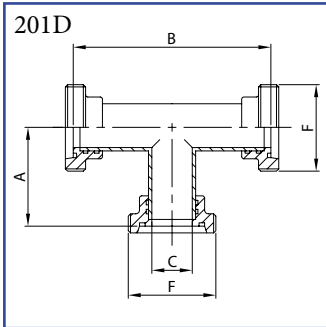
T-piece long ISO
reducing
AISI 304/L, AISI 316/L



DN	D	D2	S	L	kg
15	21,3				
20	26,9				
25	33,7				
32	42,4				
40	48,3				
50	60,3				
65	76,1				
80	88,9				
100	114,3				
125	139,7				

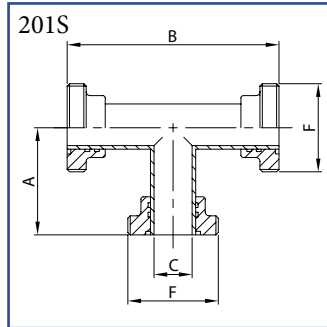
on demand

T-piece DIN
with male ends
AISI 304/L, AISI 316/L



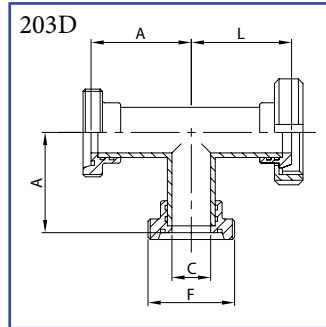
DN	A	B	C	F	kg
25	57,0	114,0	25,0	52-6	0,52
32	62,0	124,0	31,0	58-6	0,69
40	66,0	132,0	37,0	65-6	0,87
50	76,0	152,0	49,0	78-6	1,15
65	87,0	174,0	66,0	95-6	1,79
80	99,0	198,0	81,0	110-4	2,87
100	109,0	218,0	100,0	130-4	4,85

T-piece SMS
with male ends
AISI 304/L, AISI 316/L



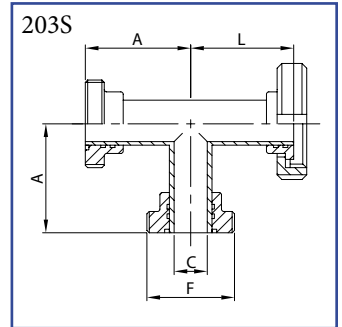
DN	A	B	C	F	kg
25	55,0	110,0	22,4	40-6	0,40
38	70,0	140,0	35,1	60-6	0,92
51	82,0	164,0	47,8	70-6	1,15
63	105,0	210,0	60,5	85-6	1,85
76	110,0	220,0	72,9	98-6	2,53
101	150,0	300,0	97,6	132-6	5,27

T-piece DIN
male / male / nut
AISI 304/L, AISI 316/L



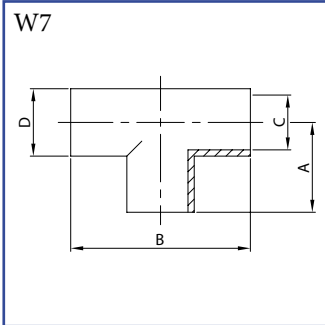
DN	A	C	F	L	kg
25	57,0	25,0	52-6	57,0	0,63
32	62,0	31,0	58-6	62,0	0,82
40	66,0	37,0	65-6	66,0	1,04
50	76,0	49,0	78-6	76,0	1,39
65	87,0	66,0	95-6	87,0	2,25
80	99,0	81,0	110-4	99,0	3,42
100	109,0	100,0	130-4	109,0	5,62

T-piece SMS
male / male / nut
AISI 304/L, AISI 316/L



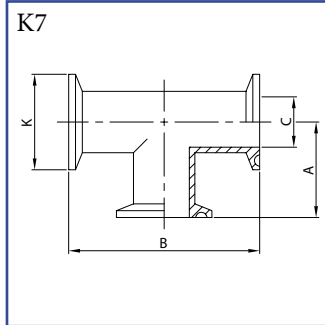
DN	A	B	C	F	kg
25	55,0	22,4	40-6	55,0	0,49
38	70,0	35,1	60-6	70,0	1,11
51	82,0	47,8	70-6	82,0	1,36
63	105,0	60,5	85-6	105,0	2,17
76	110,0	72,9	98-6	110,0	2,98
101	150,0	97,6	132-6	150,0	5,85

T-piece
for welding
AISI 316L LS, AISI 316L LL



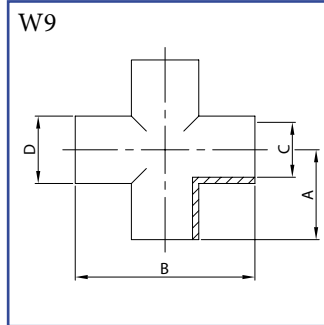
DN	A	B	C	D	kg
1/2" 12	53,9	107,8	9,4	12,7	0,06
3/4" 19	53,9	107,8	15,7	19,0	0,10
1" 25	28,6	57,2	22,1	25,4	0,08
1 1/2" 38	42,1	84,2	34,8	38,1	0,16
2" 51	52,4	104,8	47,5	50,8	0,24
2 1/2" 63	59,5	119,0	60,2	63,5	0,34
3" 76	65,9	131,8	72,9	76,2	0,50
4" 101	87,3	174,6	97,4	101,6	0,90

T-piece
with CLAMP ends
AISI 316L LS, AISI 316L LL



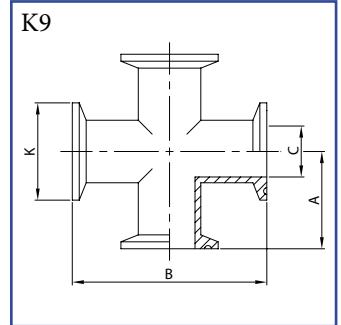
DN	A	B	C	K	kg
1/2" 12	66,6	133,2	9,4	25,0	0,10
3/4" 19	66,6	133,2	15,7	25,0	0,15
1" 25	60,3	120,6	22,1	50,5	0,18
1 1/2" 38	69,9	139,8	34,8	50,5	0,32
2" 51	88,9	177,8	47,5	64,0	0,63
2 1/2" 63	88,9	177,8	60,2	77,5	0,78
3" 76	95,3	190,6	72,9	91,0	1,14
4" 101	114,3	228,6	97,4	119,0	1,76

Cross
for welding
AISI 316L LS, AISI 316L LL



DN	A	B	C	D	kg
1/2" 12	53,9	107,8	9,4	12,7	0,08
3/4" 19	53,9	107,8	15,7	19,0	0,13
1" 25	28,6	57,2	22,1	25,4	0,11
1 1/2" 38	42,1	84,2	34,8	38,1	0,22
2" 51	52,4	104,8	47,5	50,8	0,32
2 1/2" 63	59,5	119,0	60,2	63,5	0,46
3" 76	65,9	131,8	72,9	76,2	0,67
4" 101	87,3	174,6	97,4	101,6	1,20

Cross
with CLAMP ends
AISI 316L LS, AISI 316L LL



DN	A	B	C	K	kg
1/2" 12	66,6	133,2	9,4	25,0	0,14
3/4" 19	66,6	133,2	15,7	25,0	0,20
1" 25	60,3	120,6	22,1	50,5	0,26
1 1/2" 38	69,9	139,8	34,8	50,5	0,40
2" 51	88,9	177,8	47,5	64,0	0,72
2 1/2" 63	88,9	177,8	60,2	77,5	0,81
3" 76	95,3	190,6	72,9	91,0	1,27
4" 101	114,3	228,6	97,4	119,0	1,88



On demand:
other materials, dimensions ...

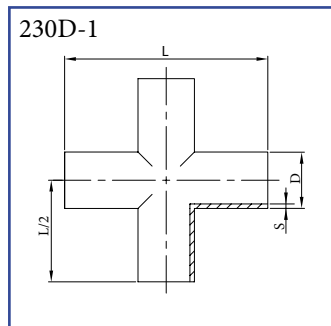
Surface:

type LS: outside polished and inside glazed

type LL: inside and outside polished

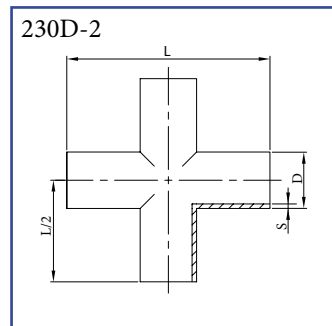
for more informations see „Clamp connection“

Cross long DIN row 1
for (orbital) welding
AISI 304/L, AISI 316/L



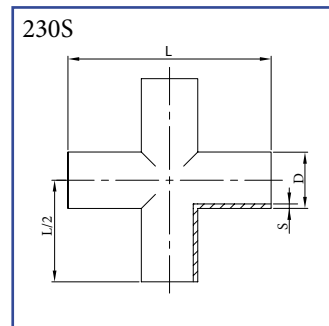
DN	D	S	L	L/2	kg
10	12,0	1,0	52,0	26,0	0,05
15	18,0	1,5	70,0	35,0	0,10
20	22,0	1,5	80,0	40,0	0,13
25	28,0	1,5	100,0	50,0	0,16
32	34,0	1,5	110,0	55,0	0,24
40	40,0	1,5	120,0	60,0	0,32
50	52,0	1,5	140,0	70,0	0,42
65	70,0	2,0	160,0	80,0	0,87
80	85,0	2,0	180,0	90,0	1,43
100	104,0	2,0	200,0	100,0	2,47
125	129,0	2,0	375,0	187,5	4,07
150	154,0	2,0	450,0	225,0	5,82
200	204,0	2,0	600,0	300,0	9,94

Cross long DIN row 2
for (orbital) welding
AISI 304/L, AISI 316/L



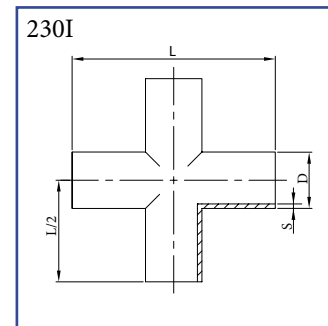
DN	D	S	L	L/2	kg
10	13,0	1,5	52,0	26,0	0,05
15	19,0	1,5	70,0	35,0	0,10
20	23,0	1,5	80,0	40,0	0,13
25	29,0	1,5	100,0	50,0	0,16
32	35,0	1,5	110,0	55,0	0,24
40	41,0	1,5	120,0	60,0	0,32
50	53,0	1,5	140,0	70,0	0,42

Cross long SMS
for (orbital) welding
AISI 304/L, AISI 316/L



DN	D	S	L	L/2	kg
25	25,4	1,5	110,0	55,0	0,25
38	38,1	1,5	140,0	70,0	0,43
51	50,8	1,5	164,0	82,0	0,63
63	63,5	1,5	210,0	105,0	0,91
76	76,2	1,65	220,0	110,0	1,38
101	101,6	2,0	300,0	150,0	2,50

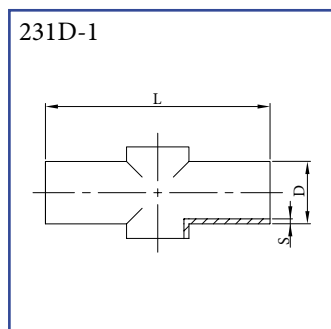
Cross long ISO
for (orbital) welding
AISI 304/L, AISI 316/L



DN	D	S	L	L/2	kg
15	21,3				
20	26,9				
25	33,7				
32	42,4				
40	48,3				
50	60,3				
65	76,1				
80	88,9				
100	114,3				
125	139,7				
150	168,3				

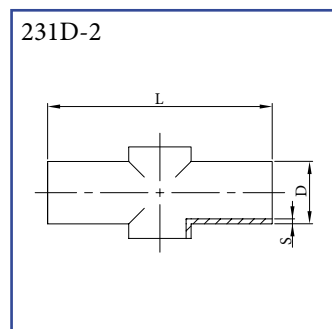
on demand

Cross short DIN row 1
for welding
AISI 304/L, AISI 316/L



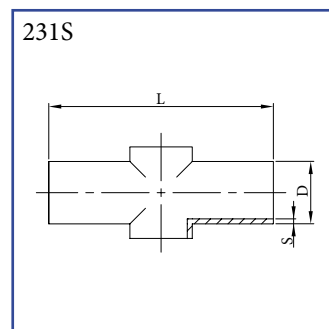
DN	D	S	L	kg
15	18,0	1,5	70,0	0,08
20	22,0	1,5	80,0	0,10
25	28,0	1,5	100,0	0,12
32	34,0	1,5	110,0	0,18
40	40,0	1,5	120,0	0,24
50	52,0	1,5	140,0	0,31
65	70,0	2,0	160,0	0,46
80	85,0	2,0	180,0	0,68
100	104,0	2,0	200,0	0,92
125	129,0	2,0	375,0	1,97
150	154,0	2,0	450,0	2,89
200	204,0	2,0	600,0	5,46

Cross short DIN row 2
for welding
AISI 304/L, AISI 316/L



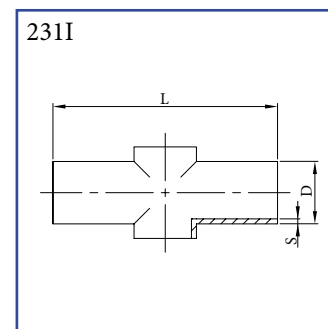
DN	D	S	L	kg
15	19,0	1,5	70,0	0,08
20	23,0	1,5	80,0	0,10
25	29,0	1,5	100,0	0,11
32	35,0	1,5	110,0	0,12
40	41,0	1,5	120,0	0,15
50	53,0	1,5	140,0	0,24

Cross short SMS
for welding
AISI 304/L, AISI 316/L



DN	D	S	L	kg
25	25,4	1,5	110,0	0,19
38	38,1	1,5	140,0	0,32
51	50,8	1,5	164,0	0,47
63	63,5	1,5	210,0	0,68
76	76,2	1,65	220,0	1,03
101	101,6	2,0	300,0	1,85

Cross short ISO
for welding
AISI 304/L, AISI 316/L



DN	D	S	L	kg
15	21,3	2,0	50,0	0,04
20	26,9	2,0	58,0	0,06
25	33,7	2,0	76,0	0,11
32	42,4	2,0	96,0	0,13
40	48,3	2,0	114,0	0,24
50	60,3	2,0	128,0	0,35
65	76,1	2,0	152,0	0,37
80	88,9	2,0	172,0	0,63
100	114,3	2,0	210,0	1,10
125	139,7	2,0	248,0	1,54
150	168,3	2,0	286,0	2,13

Cod. 240

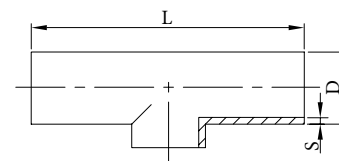
dimensions acc. to: DIN 11852 - DIN 2615 - ASTM A 403 - ISO - SMS - TB (pulled)

Materials:

AISI 304	(DIN 1.4301/7)
AISI 316L	(DIN 1.4401/4)
AISI 321	(DIN 1.4541)
AISI 316Ti	(DIN 1.4571)

Surface:

without adjustment
 outside surface brushed
For selected dimensions (on request):
 outside surface polished
 outside surface polished / inside surface brushed
 inside surface e-polished Ra 0,25 - 0,8 µm



Ø D x S	SCH	kg/pc	L	type	Ø D x S	SCH	kg/pc	L	type
12,00 x 1,50 (1,00)		0,05	52,0	11852	42,16 x 3,56	1 1/4" SCH 40S	0,41	96,0	A-403
12,00 x 2,00		0,03	34,0	TB	42,16 x 4,85	1 1/4" SCH 80S	0,54	96,0	A-403
13,00 x 1,50		0,05	70,0	11852	42,16 x 6,35	1 1/4" SCH 160	0,72	96,0	A-403
15,00 x 2,00		0,04	38,0	TB	42,40 x 2,00		0,30	96,0	ISO
17,20 x 2,30		0,06	40,0	TB	42,40 x 2,00			96,0	2615
18,00 x 1,50		0,09	70,0	11852	42,40 x 2,60		0,31	96,0	ISO
18,00 x 2,00		0,05	44,0	TB	42,40 x 2,60			96,0	2615
19,00 x 1,50		0,09	70,0	11852	42,40 x 3,20		0,37	96,0	ISO
20,00 x 2,00		0,06	50,0	TB	42,40 x 3,60			96,0	2615
21,30 x 1,60			50,0	2615	42,40 x 4,00			96,0	2615
21,30 x 2,00		0,06	50,0	ISO	44,50 x 2,00		0,15	80,0	TB
21,30 x 2,00			50,0	2615	48,26 x 2,77	1 1/2" SCH 10S	0,46	114,0	A-403
21,30 x 2,60		0,08	50,0	ISO	48,26 x 3,68	1 1/2" SCH 40S	0,60	114,0	A-403
21,30 x 3,20			50,0	2615	48,26 x 5,08	1 1/2" SCH 80S	0,80	114,0	A-403
21,30 x 4,00			50,0	2615	48,26 x 7,14	1 1/2" SCH 160	1,12	114,0	A-403
21,34 x 2,11	1/2" SCH 10S	0,07	50,0	A-403	48,30 x 2,00		0,41	114,0	ISO
21,34 x 2,77	1/2" SCH 40S	0,08	50,0	A-403	48,30 x 2,00			114,0	2615
21,34 x 3,73	1/2" SCH 80S	0,11	50,0	A-403	48,30 x 2,60		0,44	114,0	ISO
21,34 x 4,75	1/2" SCH 160	0,14	50,0	A-403	48,30 x 2,60			114,0	2615
22,00 x 1,50		0,10	80,0	11852	48,30 x 3,20		0,52	114,0	ISO
23,00 x 1,50		0,10	80,0	11852	48,30 x 4,00			114,0	2615
25,00 x 2,00		0,08	58,0	TB	48,30 x 5,00			114,0	2615
25,40 x 1,50			110,0	SMS	50,80 x 1,50 (1,65)		0,47	164,0	SMS
26,67 x 2,11	3/4" SCH 10S	0,09	58,0	A-403	51,00 x 2,00		0,52	114,0	TB
26,67 x 2,87	3/4" SCH 40S	0,11	58,0	A-403	52,00 x 1,50		0,24	140,0	11852
26,67 x 3,91	3/4" SCH 80S	0,16	58,0	A-403	53,00 x 1,50		0,24	140,0	11852
26,67 x 5,54	3/4" SCH 160	0,22	58,0	A-403	54,00 x 2,00		0,22	100,0	TB
26,90 x 1,60			58,0	2615	57,00 x 2,00		0,35	128,0	TB
26,90 x 2,00		0,09	58,0	ISO	60,30 x 2,00		0,65	128,0	ISO
26,90 x 2,30			58,0	2615	60,30 x 2,00			128,0	2615
26,90 x 2,60		0,10	58,0	ISO	60,30 x 2,60		0,65	128,0	ISO
26,90 x 3,20			58,0	2615	60,30 x 2,90			128,0	2615
26,90 x 4,00			58,0	2615	60,30 x 3,00		0,51	128,0	ISO
28,00 x 1,50		0,11	100,0	11852	60,30 x 3,60		1,00	128,0	ISO
29,00 x 1,50		0,11	100,0	11852	60,30 x 5,60			128,0	2615
30,00 x 2,00		0,10	64,0	TB	60,33 x 2,77	2" SCH 10S	0,63	128,0	A-403
33,40 x 2,77	1" SCH 10S	0,20	76,0	A-403	60,33 x 3,91	2" SCH 40S	0,87	128,0	A-403
33,40 x 3,38	1" SCH 40S	0,24	76,0	A-403	60,33 x 5,54	2" SCH 80S	1,20	128,0	A-403
33,40 x 4,55	1" SCH 80S	0,32	76,0	A-403	60,33 x 8,71	2" SCH 160	1,89	128,0	A-403
33,40 x 6,35	1" SCH 160	0,44	76,0	A-403	63,50 x 1,50 (1,65)		0,68	210,0	SMS
33,70 x 2,00		0,20	76,0	ISO	70,00 x 2,00		0,37	152,0	TB
33,70 x 2,00			76,0	2615	70,00 x 2,00		0,46	160,0	11852
33,70 x 2,60		0,20	76,0	ISO	73,03 x 3,05	2 1/2" SCH 10S	1,01	152,0	A-403
33,70 x 2,60			76,0	2615	73,03 x 5,16	2 1/2" SCH 40S	1,66	152,0	A-403
33,70 x 3,20		0,24	76,0	ISO	73,03 x 7,01	2 1/2" SCH 80S	2,19	152,0	A-403
33,70 x 3,20			76,0	2615	76,10 x 2,00		0,73	152,0	ISO
33,70 x 4,00			76,0	2615	76,10 x 2,30			152,0	2615
34,00 x 1,50		0,12	110,0	11852	76,10 x 2,60		1,05	152,0	ISO
35,00 x 1,50		0,12	110,0	11852	76,10 x 2,90		1,00	152,0	ISO
38,00 x 2,00		0,30	60,0	TB	76,10 x 2,90			152,0	2615
38,10 x 1,50 (1,65)		0,32	140,0	SMS	76,10 x 3,00		0,75	152,0	ISO
40,00 x 1,50		0,15	120,0	11852	76,10 x 5,00			152,0	2615
41,00 x 1,50		0,15	120,0	11852	76,10 x 7,10			152,0	2615
42,16 x 2,77	1 1/4" SCH 10S	0,33	96,0	A-403	76,20 x 1,65		1,03	220,0	SMS

Cod. 240

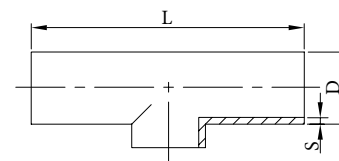
dimensions acc. to: DIN 11852 - DIN 2615 - ASTM A 403 - ISO - SMS - TB (pulled)

Materials:

AISI 304	(DIN 1.4301/7)
AISI 316L	(DIN 1.4401/4)
AISI 321	(DIN 1.4541)
AISI 316Ti	(DIN 1.4571)

Surface:

without adjustment
 outside surface brushed
For selected dimensions (on request):
 outside surface polished
 outside surface polished / inside surface brushed
 inside surface e-polished Ra 0,25 - 0,8 µm



Ø D x S	SCH	kg/pc	L	type	Ø D x S	SCH	kg/pc	L	type
84,00 x 2,00		0,57	160,0	TB	204,00 x 2,00		5,46	600,0	11852
85,00 x 2,00		0,68	180,0	11852	206,00 x 3,00		7,45	356,0	TB
88,90 x 2,00		0,83	172,0	ISO	219,08 x 3,76	8" SCH 10S	8,46	438,0	A-403
88,90 x 2,30			172,0	2615	219,08 x 8,18	8" SCH 40S	18,00	438,0	A-403
88,90 x 3,00		1,20	172,0	ISO	219,08 x 12,7	8" SCH 80S	27,40	438,0	A-403
88,90 x 3,20			172,0	2615	219,10 x 2,00		3,37	356,0	ISO
88,90 x 5,60			172,0	2615	291,10 x 2,90		7,50	356,0	ISO
88,90 x 8,00			172,0	2615	219,10 x 2,90			356,0	2615
88,90 x 3,05	3" SCH 10S	1,37	172,0	A-403	219,10 x 3,00		4,91	356,0	ISO
88,90 x 5,49	3" SCH 40S	1,90	172,0	A-403	219,10 x 4,50			356,0	2615
88,90 x 7,62	3" SCH 80S	3,25	172,0	A-403	219,10 x 6,30			356,0	2615
88,90 x 11,13	3" SCH 160	5,87	172,0	A-403	219,10 x 8,00			356,0	2615
101,60x2,00(2,11)		1,85	300,0	SMS	219,10 x 12,50			356,0	2615
104,00 x 2,00		0,92	200,0	11852	254,00 x 2,00		5,50	500,0	TB
104,00 x 2,00		1,25	210,0	TB	256,00 x 3,00		8,30	500,0	TB
114,30 x 2,00		1,00	200,0	TB	273,00 x 2,90			432,0	2615
114,30 x 2,00		1,22	210,0	ISO	273,00 x 3,00		9,17	500,0	TB
114,30 x 2,60		2,25	210,0	ISO	273,00 x 5,00			432,0	2615
114,30 x 2,60			210,0	2615	273,00 x 6,30			432,0	2615
114,30 x 3,00		1,44	200,0	TB	273,00 x 8,80			432,0	2615
114,30 x 3,00		1,95	210,0	ISO	273,00 x 14,20			432,0	2615
114,30 x 3,60			210,0	2615	273,05 x 4,19	10" SCH 10S	14,20	432,0	A-403
114,30 x 6,30			210,0	2615	273,05 x 9,27	10" SCH 40S	30,60	432,0	A-403
114,30 x 8,80			210,0	2615	306,00 x 3,00		12,49	600,0	TB
114,30 x 3,05	4" SCH 10S	2,15	228,0	A-403	323,85 x 4,57	12" SCH 10S	21,60	508,0	A-403
114,30 x 6,02	4" SCH 40S	4,13	228,0	A-403	323,85 x 9,53	12" SCH 40S	44,30	508,0	A-403
114,30 x 8,56	4" SCH 80S	5,74	228,0	A-403	323,90 x 3,00		10,93	600,0	TB
114,30 x 13,49	4" SCH160	9,05	228,0	A-403	323,90 x 3,20			508,0	2615
129,00 x 2,00		1,38	248,0	TB	323,90 x 5,60			508,0	2615
129,00 x 2,00		1,97	375,0	11852	323,90 x 7,10			508,0	2615
139,70 x 2,00		1,47	248,0	ISO	323,90 x 10,0			508,0	2615
139,70 x 2,60		3,30	248,0	ISO	323,90 x 16,0			508,0	2615
139,70 x 2,60			248,0	2615	355,60 x 3,20			558,0	2615
139,70 x 3,00		5,13	248,0	ISO	355,60 x 5,60			558,0	2615
139,70 x 4,00			248,0	2615	355,60 x 8,00			558,0	2615
139,70 x 6,30			248,0	2615	355,60 x 11,00			558,0	2615
139,70 x 10,00			248,0	2615	355,60 x 17,50			558,0	2615
141,30 x 3,40	5" SCH 10S	3,48	282,0	A-403	355,60 x 4,78	14" SCH 10S	27,30	558,0	A-403
141,30 x 6,55	5" SCH 40S	6,55	282,0	A-403	355,60 x 9,53	14" SCH 40S	53,70	558,0	A-403
154,00 x 2,00		2,81	286,0	TB	356,00 x 3,00		16,60	700,0	TB
154,00 x 2,00		2,89	450,0	11852	406,40 x 3,00		21,50	800,0	TB
168,28 x 3,40	6" SCH 10S	4,76	336,0	A-403	406,40 x 4,77	16" SCH 10S	58,90	610,0	A-403
168,28 x 7,11	6" SCH 40S	9,73	336,0	A-403	406,40 x 9,53	16" SCH 40S	99,70	610,0	A-403
168,28 x 10,97	6" SCH 80S	12,80	336,0	A-403	457,20 x 3,00		34,70	900,0	
168,30 x 2,60			286,0	2615	508,00 x 3,00		42,80	1000,0	
156,00 x 3,00		3,14	286,0	TB	508,00 x 5,53	20" SCH 10S	103,30	762,0	A-403
168,30 x 4,00			286,0	2615	508,00 x 9,53	20" SCH 40S	162,20	762,0	A-403
168,30 x 4,50			286,0	2615	609,60 x 4,00		81,80	1200,0	
168,30 x 7,10			286,0	2615	609,60 x 6,35	24" SCH 10S	155,40	863,6	A-403
168,30 x 11,00			286,0	2615	609,60 x 9,53	24" SCH 40S	226,00	863,6	A-403
168,30 x 2,00		2,05	286,0	ISO					
168,30 x 2,60		5,40	286,0	ISO					
168,30 x 3,00		2,72	286,0	ISO					
204,00 x 2,00		3,79	356,0	TB					

Cod. 250

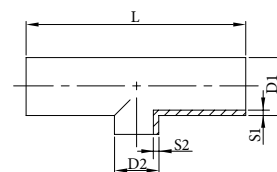
dimensions acc. to: DIN 11852 - DIN 2615 - ASTM A 403 - ISO - SMS - TB (pulled)

Materials:

AISI 304	(DIN 1.4301/7)
AISI 316L	(DIN 1.4401/4)
AISI 321	(DIN 1.4541)
AISI 316Ti	(DIN 1.4571)

Surface:

without adjustment
 outside surface brushed
For selected dimensions (on request):
 outside surface polished
 outside surface polished / inside surface brushed
 inside surface e-polished Ra 0,25 - 0,8 µm



Ø D x S	SCH	kg/pc	L	type	Ø D x S	SCH	kg/pc	L	type
25,00 x 20,00 x 2,00 x 2,00		0,05	58,0	TB	42,40 x 33,70 x 2,60 x 2,60		0,80	96,0	ISO
26,67 x 21,34 x 2,11 x 2,11	3/4" x 1/2" SCH 10S	0,08	57,2	A-403	42,40 x 33,70 x 3,20 x 3,20		1,10	96,0	ISO
26,67 x 21,34 x 2,87 x 2,77	3/4" x 1/2" SCH 40S	0,12	57,2	A-403	42,40 x 21,30 x 2,60 x 2,00		0,36	96,0	2615
26,67 x 21,34 x 3,91 x 3,73	3/4" x 1/2" SCH 80S	0,15	57,2	A-403	42,40 x 26,90 x 2,60 x 2,30		0,38	96,0	2615
26,90 x 21,30 x 2,00 x 2,00		0,34	58,0	ISO	42,40 x 33,70 x 2,60 x 2,60		0,42	96,0	2615
26,90 x 21,30 x 2,60 x 2,60		0,34	58,0	ISO	42,40 x 26,90 x 3,60 x 2,90		0,52	96,0	2615
26,90 x 21,30 x 2,30 x 2,00		0,15	58,0	2615	42,40 x 33,70 x 3,60 x 3,60		0,55	96,0	2615
26,90 x 21,30 x 2,90 x 2,60		0,18	58,0	2615	44,50 x 20,00 x 2,00 x 2,00		0,14	114,0	TB
28,00 x 22,00 x 1,50 x 1,50		0,09	100,0	11852	44,50 x 25,00 x 2,00 x 2,00		0,14	114,0	TB
29,00 x 23,00 x 1,50 x 1,50		0,09	100,0	11852	44,50 x 30,00 x 2,00 x 2,00		0,14	114,0	TB
30,00 x 20,00 x 2,00 x 2,00		0,06	76,0	TB	48,26 x 21,30 x 2,77 x 2,11	1 1/2" x 1/2" SCH 10S	0,39	114,2	A-403
30,00 x 25,00 x 2,00 x 2,00		0,06	76,0	TB	48,26 x 21,30 x 3,68 x 2,77	1 1/2" x 1/2" SCH 40S	0,51	114,2	A-403
33,40 x 21,30 x 2,77 x 2,11	1" x 1/2" SCH 10S	0,19	76,2	A-403	48,26 x 21,30 x 5,08 x 3,73	1 1/2" x 1/2" SCH 80S	0,67	114,2	A-403
33,40 x 21,30 x 3,38 x 2,77	1" x 1/2" SCH 40S	0,22	76,2	A-403	48,26 x 26,67 x 2,77 x 2,11	1 1/2" x 3/4" SCH 10S	0,40	114,2	A-403
33,40 x 21,30 x 4,55 x 3,73	1" x 1/2" SCH 80S	0,28	76,2	A-403	48,26 x 26,67 x 3,68 x 2,87	1 1/2" x 3/4" SCH 40S	0,52	114,2	A-403
33,40 x 26,67 x 2,77 x 2,11	1" x 3/4" SCH 10S	0,19	76,2	A-403	48,26 x 26,67 x 5,08 x 3,91	1 1/2" x 3/4" SCH 80S	0,69	114,2	A-403
33,40 x 26,67 x 3,38 x 2,87	1" x 3/4" SCH 40S	0,23	76,2	A-403	48,26 x 33,40 x 2,77 x 2,77	1 1/2" x 1" SCH 10S	0,42	114,2	A-403
33,40 x 26,67 x 4,55 x 3,91	1" x 3/4" SCH 80S	0,29	76,2	A-403	48,26 x 33,40 x 3,68 x 3,38	1 1/2" x 1" SCH 40S	0,55	114,2	A-403
33,70 x 21,30 x 2,00 x 2,00		0,25	76,0	ISO	48,26 x 33,40 x 5,08 x 4,55	1 1/2" x 1" SCH 80S	0,73	114,2	A-403
33,70 x 21,30 x 2,60 x 2,60		0,33	76,0	ISO	48,26 x 42,16 x 2,77 x 2,77	1 1/2" x 1 1/4" SCH 10S	0,44	114,2	A-403
33,70 x 26,90 x 2,00 x 2,00		0,25	76,0	ISO	48,26 x 42,16 x 3,68 x 3,56	1 1/2" x 1 1/4" SCH 40S	0,57	114,2	A-403
33,70 x 26,90 x 2,60 x 2,60		0,34	76,0	ISO	48,26 x 42,16 x 5,08 x 4,85	1 1/2" x 1 1/4" SCH 80S	0,77	114,2	A-403
33,70 x 21,30 x 2,90 x 2,30		0,28	76,0	ISO	48,30 x 21,30 x 2,00 x 2,00		1,10	114,0	ISO
33,70 x 26,90 x 2,90 x 2,30		0,28	76,0	ISO	48,30 x 21,30 x 2,60 x 2,60		1,40	114,0	ISO
33,70 x 21,30 x 3,60 x 2,90		0,35	76,0	2615	48,30 x 26,90 x 2,00 x 2,00		1,00	114,0	ISO
33,70 x 26,90 x 3,60 x 2,90		0,35	76,0	2615	48,30 x 26,90 x 2,60 x 2,60		1,30	114,0	ISO
34,00 x 28,00 x 1,50 x 1,50		0,12	110,0	11852	48,30 x 33,70 x 2,00 x 2,00		0,80	114,0	ISO
35,00 x 29,00 x 1,50 x 1,50		0,12	110,0	11852	48,30 x 33,70 x 2,60 x 2,60		1,10	114,0	ISO
38,00 x 20,00 x 2,00 x 2,00		0,14	96,0	TB	48,30 x 33,70 x 3,20 x 3,20		1,40	114,0	ISO
38,00 x 25,00 x 2,00 x 2,00		0,13	96,0	TB	48,30 x 42,40 x 2,00 x 2,00		0,80	114,0	ISO
38,10 x 25,40 x 1,50 x 1,50		0,32	140,0	SMS	48,30 x 42,40 x 2,60 x 2,60		1,00	114,0	ISO
40,00 x 28,00 x 1,50 x 1,50		0,15	120,0	11852	48,30 x 42,40 x 3,20 x 3,20		1,30	114,0	ISO
40,00 x 34,00 x 1,50 x 1,50		0,15	120,0	11852	48,30 x 26,90 x 2,60 x 2,30		0,54	114,0	2615
41,00 x 29,00 x 1,50 x 1,50		0,15	120,0	11852	48,30 x 33,70 x 2,60 x 2,60		0,61	114,0	2615
41,00 x 35,00 x 1,50 x 1,50		0,15	120,0	11852	48,30 x 26,90 x 3,60 x 2,90		0,73	114,0	2615
42,16 x 26,67 x 2,77 x 2,11	1 1/4" x 3/4" SCH 10S	0,29	95,2	A-403	48,30 x 33,70 x 3,60 x 3,60		0,73	114,0	2615
42,16 x 26,67 x 3,56 x 2,87	1 1/4" x 3/4" SCH 40S	0,37	95,2	A-403	50,80 x 25,40 x 1,50 x 1,50		0,47	164,0	SMS
42,16 x 26,67 x 4,85 x 3,91	1 1/4" x 3/4" SCH 80S	0,48	95,2	A-403	50,80 x 38,10 x 1,50 x 1,50		0,47	164,0	SMS
42,16 x 33,40 x 2,77 x 2,77	1 1/4" x 1" SCH 10S	0,31	95,2	A-403	52,00 x 28,00 x 1,50 x 1,50		0,24	140,0	11852
42,16 x 33,40 x 3,56 x 3,38	1 1/4" x 1" SCH 40S	0,39	95,2	A-403	52,00 x 40,00 x 1,50 x 1,50		0,24	140,0	11852
42,16 x 33,40 x 4,85 x 4,55	1 1/4" x 1" SCH 80S	0,51	95,2	A-403	53,00 x 29,00 x 1,50 x 1,50		0,24	140,0	11852
42,40 x 21,30 x 2,00 x 2,00		0,79	96,0	ISO	53,00 x 41,00 x 1,50 x 1,50		0,24	140,0	11852
42,40 x 21,30 x 2,60 x 2,60		1,03	96,0	ISO	54,00 x 30,00 x 2,00 x 2,00		0,34	128,0	TB
42,40 x 26,90 x 2,00 x 2,00		0,79	96,0	ISO	54,00 x 44,00 x 2,00 x 2,00		0,23	100,0	TB
42,40 x 26,90 x 2,60 x 2,60		1,03	96,0	ISO	60,30 x 21,30 x 2,00 x 2,00		1,30	128,0	ISO
42,40 x 33,70 x 2,00 x 2,00		0,60	96,0	ISO	60,30 x 21,30 x 2,60 x 2,60		1,60	128,0	ISO

Cod. 250

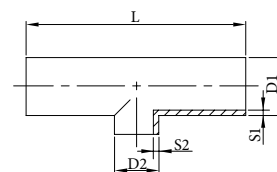
dimensions acc. to: DIN 11852 - DIN 2615 - ASTM A 403 - ISO - SMS - TB (pulled)

Materials:

AISI 304	(DIN 1.4301/7)
AISI 316L	(DIN 1.4401/4)
AISI 321	(DIN 1.4541)
AISI 316Ti	(DIN 1.4571)

Surface:

without adjustment
 outside surface brushed
For selected dimensions (on request):
 outside surface polished
 outside surface polished / inside surface brushed
 inside surface e-polished Ra 0,25 - 0,8 µm



Ø D x S	SCH	kg/pc	L	type	Ø D x S	SCH	kg/pc	L	type
60,30 x 26,90 x 2,00 x 2,00		1,20	128,0	ISO	76,10 x 60,30 x 2,90 x 2,90		1,20	152,0	2615
60,30 x 26,90 x 2,60 x 2,60		1,50	128,0	ISO	76,20 x 38,10 x 1,65 x 1,50		1,03	220,0	SMS
60,30 x 33,70 x 2,00 x 2,00		1,10	128,0	ISO	76,20 x 50,80 x 1,65 x 1,50		1,03	220,0	SMS
60,30 x 33,70 x 2,60 x 2,60		1,40	128,0	ISO	76,20 x 63,50 x 1,65 x 1,50		1,03	220,0	SMS
60,30 x 42,40 x 2,00 x 2,00		1,10	128,0	ISO	84,00 x 44,00 x 2,00 x 2,00		0,63	160,0	TB
60,30 x 42,40 x 2,60 x 2,60		1,40	128,0	ISO	84,00 x 54,00 x 2,00 x 2,00		0,61	160,0	TB
60,30 x 48,30 x 2,00 x 2,00		1,10	128,0	ISO	84,00 x 69,00 x 2,00 x 2,00		0,59	160,0	TB
60,30 x 48,30 x 2,60 x 2,60		1,40	128,0	ISO	85,00 x 28,00 x 2,00 x 1,50		0,70	180,0	11852
60,30 x 21,30 x 2,90 x 2,60		0,72	128,0	2615	85,00 x 29,00 x 2,00 x 1,50		0,70	180,0	11852
60,30 x 26,90 x 2,90 x 2,60		0,72	128,0	2615	85,00 x 40,00 x 2,00 x 1,50		0,70	180,0	11852
60,30 x 33,70 x 2,90 x 2,60		0,72	128,0	2615	85,00 x 41,00 x 2,00 x 1,50		0,70	180,0	11852
60,30 x 42,40 x 2,90 x 2,60		0,76	128,0	2615	85,00 x 52,00 x 2,00 x 1,50		0,68	180,0	11852
60,30 x 48,30 x 2,90 x 2,60		0,79	128,0	2615	85,00 x 53,00 x 2,00 x 1,50		0,68	180,0	11852
60,30 x 33,70 x 4,00 x 2,60		1,09	128,0	2615	88,90 x 48,30 x 2,00 x 2,00		0,65	152,0	ISO
60,30 x 42,40 x 4,00 x 2,60		1,10	128,0	2615	88,90 x 60,30 x 2,00 x 2,00		0,68	152,0	ISO
60,30 x 48,30 x 4,00 x 2,60		1,10	128,0	2615	88,90 x 60,30 x 3,00 x 3,00		0,65	152,0	ISO
60,33 x 33,40 x 2,77 x 2,77	2" x 1" SCH 10S	0,54	127,0	A-403	88,90 x 76,10 x 2,00 x 2,00		0,68	152,0	ISO
60,33 x 33,40 x 3,91 x 3,38	2" x 1" SCH 40S	0,74	127,0	A-403	88,90 x 76,10 x 3,00 x 3,00		0,62	152,0	ISO
60,33 x 33,40 x 5,54 x 4,55	2" x 1" SCH 80S	1,02	127,0	A-403	88,90 x 48,30 x 3,20 x 2,60		1,70	172,0	2615
60,33 x 42,16 x 2,77 x 2,77	2" x 1 1/4" SCH10S	0,57	127,0	A-403	88,90 x 60,30 x 3,20 x 2,90		1,85	172,0	2615
60,33 x 42,16 x 3,91 x 3,56	2" x 1 1/4" SCH40S	0,80	127,0	A-403	88,90 x 76,10 x 3,20 x 2,90		1,85	172,0	2615
60,33 x 42,16 x 5,54 x 4,85	2" x 1 1/4" SCH80S	1,07	127,0	A-403	88,90 x 33,40 x 3,05 x 2,77	3" x 1" SCH 10S	1,08	171,5	A-403
60,33 x 48,26 x 2,77 x 2,77	2" x 1 1/2" SCH10S	0,59	127,0	A-403	88,90 x 33,40 x 5,49 x 3,38	3" x 1" SCH 40S	1,94	171,5	A-403
60,33 x 48,26 x 3,91 x 3,68	2" x 1 1/2" SCH40S	0,83	127,0	A-403	88,90 x 48,30 x 3,05 x 2,77	3" x 1 1/2" SCH 10S	1,19	171,5	A-403
60,33 x 48,26 x 5,54 x 5,08	2" x 1 1/2" SCH80S	1,11	127,0	A-403	88,90 x 48,30 x 5,49 x 3,68	3" x 1 1/2" SCH 40S	2,05	171,5	A-403
63,50 x 38,10 x 1,50 x 1,50		0,68	210,0	SMS	88,90 x 48,30 x 7,62 x 5,08	3" x 1 1/2" SCH 80S	2,77	171,5	A-403
63,50 x 50,80 x 1,50 x 1,50		0,68	210,0	SMS	88,90 x 60,33 x 3,05 x 2,77	3" x 2" SCH 10S	1,23	171,5	A-403
69,00 x 44,00 x 2,00 x 2,00		0,41	130,0	TB	88,90 x 60,33 x 5,49 x 3,91	3" x 2" SCH 40S	2,16	171,5	A-403
69,00 x 54,00 x 2,00 x 2,00		0,39	130,0	TB	88,90 x 60,33 x 7,62 x 5,54	3" x 2" SCH 80S	2,85	171,5	A-403
70,00 x 28,00 x 2,00 x 1,50		0,47	160,0	11852	88,90 x 73,03 x 3,05 x 3,05	3" x 2 1/2" SCH 10S	1,31	171,5	A-403
70,00 x 29,00 x 2,00 x 1,50		0,47	160,0	11852	88,90 x 73,03 x 5,49 x 5,16	3" x 2 1/2" SCH 40S	2,29	171,5	A-403
70,00 x 40,00 x 2,00 x 1,50		0,46	160,0	11852	101,60 x 63,50 x 2,00 x 1,65		1,85	300,0	SMS
70,00 x 41,00 x 2,00 x 1,50		0,46	160,0	11852	101,60 x 76,20 x 2,00 x 1,65		1,85	300,0	SMS
70,00 x 44,50 x 2,00 x 2,00		0,37	152,0	TB	104,00 x 28,00 x 2,00 x 1,50		1,00	200,0	11852
70,00 x 52,00 x 2,00 x 1,50		0,46	160,0	11852	104,00 x 29,00 x 2,00 x 1,50		1,00	200,0	11852
70,00 x 53,00 x 2,00 x 1,50		0,46	160,0	11852	104,00 x 40,00 x 2,00 x 1,50		1,00	200,0	11852
70,00 x 54,00 x 2,00 x 2,00		0,37	152,0	TB	104,00 x 41,00 x 2,00 x 1,50		1,00	200,0	11852
73,03 x 60,30 x 3,05 x 2,77	2 1/2" x 2" SCH 10S	0,94	152,4	A-403	104,00 x 52,00 x 2,00 x 1,50		1,00	200,0	11852
73,03 x 60,30 x 5,16 x 3,93	2 1/2" x 2" SCH 40S	1,53	152,4	A-403	104,00 x 53,00 x 2,00 x 1,50		1,00	200,0	11852
76,10 x 33,70 x 2,00 x 2,00		0,50	130,0	ISO	104,00 x 54,00 x 2,00 x 2,00		0,99	200,0	TB
76,10 x 42,40 x 2,00 x 2,00		0,50	130,0	ISO	104,00 x 69,00 x 2,00 x 2,00		0,96	200,0	TB
76,10 x 48,30 x 2,00 x 2,00		0,44	130,0	ISO	104,00 x 70,00 x 2,00 x 2,00		0,97	200,0	11852
76,10 x 60,30 x 2,00 x 2,00		0,43	130,0	ISO	104,00 x 84,00 x 2,00 x 2,00		0,94	200,0	TB
76,10 x 60,30 x 3,00 x 3,00		3,20	130,0	ISO	104,00 x 85,00 x 2,00 x 2,00		0,97	200,0	11852
76,10 x 42,40 x 2,90 x 2,60		1,12	152,0	2615	114,30 x 60,30 x 2,00 x 2,00		1,10	200,0	ISO
76,10 x 48,30 x 2,90 x 2,60		1,16	152,0	2615	114,30 x 60,30 x 3,00 x 3,00		1,16	200,0	ISO

Cod. 250

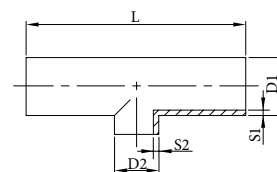
dimensions acc. to: DIN 11852 - DIN 2615 - ASTM A 403 - ISO - SMS - TB (pulled)

Materials:

AISI 304	(DIN 1.4301/7)
AISI 316L	(DIN 1.4401/4)
AISI 321	(DIN 1.4541)
AISI 316Ti	(DIN 1.4571)

Surface:

without adjustment
 outside surface brushed
For selected dimensions (on request):
 outside surface polished
 outside surface polished / inside surface brushed
 inside surface e-polished Ra 0,25 - 0,8 µm



Ø D x S	SCH	kg/pc	L	type	Ø D x S	SCH	kg/pc	L	type
114,30 x 76,10 x 2,00 x 2,00		1,10	200,0	ISO	154,00 x 129,00 x 2,00 x 2,00		2,09	286,0	TB
114,30 x 76,10 x 3,00 x 3,00		1,57	200,0	ISO	154,00 x 129,00 x 2,00 x 2,00		2,89	450,0	11852
114,30 x 88,90 x 2,00 x 2,00		1,10	200,0	ISO	168,30 x 76,10 x 2,00 x 2,00		2,13	286,0	ISO
114,30 x 88,90 x 3,00 x 3,00		1,53	200,0	ISO	168,30 x 76,10 x 3,00 x 3,00		3,13	286,0	ISO
114,30 x 60,30 x 3,60 x 2,90		2,90	210,0	2615	168,30 x 88,90 x 2,00 x 2,00		2,13	286,0	ISO
114,30 x 76,10 x 3,60 x 2,90		3,00	210,0	2615	168,30 x 88,90 x 3,00 x 3,00		3,13	286,0	ISO
114,30 x 88,90 x 3,60 x 3,20		3,00	210,0	2615	168,30 x 114,30 x 2,00 x 2,00		2,13	286,0	ISO
114,30 x 60,33 x 3,05 x 2,77	4" x 2" SCH 10S	1,88	209,6	A-403	168,30 x 114,30 x 3,00 x 3,00		3,13	286,0	ISO
114,30 x 60,33 x 6,02 x 3,91	4" x 2" SCH 40S	3,52	209,6	A-403	168,30 x 139,70 x 2,00 x 2,00		2,13	286,0	ISO
114,30 x 60,33 x 8,56 x 5,54	4" x 2" SCH 80S	4,91	209,6	A-403	168,30 x 139,70 x 3,00 x 3,00		3,13	286,0	ISO
114,30 x 73,03 x 3,05 x 3,05	4" x 2 1/2" SCH 10S	1,95	209,6	A-403	168,28 x 88,90 x 3,40 x 3,05	6" x 3" SCH 10S	4,21	285,8	A-403
114,30 x 73,03 x 6,02 x 5,16	4" x 2 1/2" SCH 40S	3,70	209,6	A-403	168,28 x 88,90 x 7,11 x 5,49	6" x 3" SCH 40S	8,52	285,8	A-403
114,30 x 88,90 x 3,05 x 3,05	4" x 3" SCH 10S	2,02	209,6	A-403	168,28 x 114,30 x 3,40 x 3,05	6" x 4" SCH 10S	4,34	285,8	A-403
114,30 x 88,90 x 6,02 x 5,49	4" x 3" SCH 40S	3,83	209,6	A-403	168,28 x 114,30 x 7,11 x 6,02	6" x 4" SCH 40S	8,81	285,8	A-403
114,30 x 88,90 x 8,56 x 7,62	4" x 3" SCH 80S	5,31	209,6	A-403	204,00 x 104,00 x 2,00 x 2,00		3,80	356,0	TB
129,00 x 28,00 x 2,00 x 1,50		2,00	374,0	11852	204,00 x 129,00 x 2,00 x 2,00		3,80	356,0	TB
129,00 x 29,00 x 2,00 x 1,50		2,00	374,0	11852	204,00 x 154,00 x 2,00 x 2,00		3,80	356,0	TB
129,00 x 40,00 x 2,00 x 1,50		2,00	374,0	11852	206,00 x 156,00 x 3,00 x 3,00		5,73	356,0	TB
129,00 x 41,00 x 2,00 x 1,50		2,00	374,0	11852	219,10 x 114,30 x 2,00 x 2,00		3,37	356,0	ISO
129,00 x 52,00 x 2,00 x 1,50		2,00	374,0	11852	219,10 x 114,30 x 3,00 x 3,00		4,91	356,0	ISO
129,00 x 53,00 x 2,00 x 1,50		2,00	374,0	11852	219,10 x 139,70 x 2,00 x 2,00		3,37	356,0	ISO
129,00 x 70,00 x 2,00 x 2,00		1,97	374,0	11852	219,10 x 139,70 x 3,00 x 3,00		4,91	356,0	ISO
129,00 x 84,00 x 2,00 x 2,00		1,50	250,0	TB	219,10 x 168,30 x 2,00 x 2,00		3,37	356,0	ISO
129,00 x 85,00 x 2,00 x 2,00		1,97	374,0	11852	219,10 x 168,30 x 3,00 x 3,00		4,91	356,0	ISO
129,00 x 104,00 x 2,00 x 2,00		1,46	250,0	TB	219,08 x 114,30 x 3,40 x 3,05	8" x 4" SCH 10S	7,48	355,6	A-403
129,00 x 104,00 x 2,00 x 2,00		1,97	374,0	11852	219,08 x 114,30 x 8,18 x 6,02	8" x 4" SCH 40S	15,9	355,6	A-403
139,70 x 76,10 x 2,00 x 2,00		1,51	248,0	ISO	219,08 x 168,28 x 3,76 x 3,40	8" x 6" SCH 10S	7,91	355,6	A-403
139,70 x 76,10 x 3,00 x 3,00		2,90	248,0	ISO	219,08 x 168,28 x 8,18 x 7,11	8" x 6" SCH 40S	16,8	355,6	A-403
139,70 x 88,90 x 2,00 x 2,00		1,51	248,0	ISO	256,00 x 156,00 x 3,00 x 3,00		8,90	500,0	TB
139,70 x 88,90 x 3,00 x 3,00		2,41	248,0	ISO	256,00 x 206,00 x 3,00 x 3,00		8,70	500,0	TB
139,70 x 114,30 x 2,00 x 2,00		1,51	248,0	ISO	273,00 x 168,30 x 3,00 x 3,00		10,1	500,0	TB
139,70 x 114,30 x 3,00 x 3,00		2,32	248,0	ISO	273,00 x 219,10 x 3,00 x 3,00		9,67	500,0	TB
139,70 x 76,10 x 4,00 x 2,90		4,5	248,0	2615	273,05 x 168,30 x 4,19 x 3,40	10" x 6" SCH 10S	12,8	431,8	A-403
139,70 x 88,90 x 4,00 x 3,20		4,6	248,0	2615	273,05 x 168,30 x 9,27 x 7,11	10" x 6" SCH 40S	27,6	431,8	A-403
139,70 x 114,30 x 4,00 x 3,60		4,7	248,0	2615	273,05 x 219,08 x 4,19 x 3,76	10" x 8" SCH 10S	13,3	431,8	A-403
154,00 x 28,00 x 2,00 x 1,50		2,95	450,0	11852	273,05 x 219,08 x 9,27 x 8,18	10" x 8" SCH 40S	28,9	431,8	A-403
154,00 x 29,00 x 2,00 x 1,50		2,95	450,0	11852	306,00 x 206,00 x 3,00 x 3,00		12,9	600,0	TB
154,00 x 40,00 x 2,00 x 1,50		2,95	450,0	11852	306,00 x 256,00 x 3,00 x 3,00		12,5	600,0	TB
154,00 x 41,00 x 2,00 x 1,50		2,95	450,0	11852	323,90 x 219,10 x 3,00 x 3,00		13,6	600,0	TB
154,00 x 52,00 x 2,00 x 1,50		2,95	450,0	11852	323,90 x 273,00 x 3,00 x 3,00		13,0	600,0	TB
154,00 x 53,00 x 2,00 x 1,50		2,95	450,0	11852	323,85 x 168,28 x 4,57 x 3,40	12" x 6" SCH 10S	19,1	508,0	A-403
154,00 x 70,00 x 2,00 x 2,00		2,89	450,0	11852	323,85 x 168,28 x 9,53 x 7,11	12" x 6" SCH 40S	39,1	508,0	A-403
154,00 x 84,00 x 2,00 x 2,00		2,00	286,0	TB	323,85 x 219,08 x 4,57 x 3,76	12" x 8" SCH 10S	19,6	508,0	A-403
154,00 x 85,00 x 2,00 x 2,00		2,89	450,0	11852	323,85 x 219,08 x 9,53 x 8,18	12" x 8" SCH 40S	40,3	508,0	A-403
154,00 x 104,00 x 2,00 x 2,00		2,13	286,0	TB	323,85 x 273,05 x 4,57 x 4,19	12" x 10" SCH 10S	20,5	508,0	A-403
154,00 x 104,00 x 2,00 x 2,00		2,89	450,0	11852	323,85 x 273,05 x 9,53 x 9,27	12" x 10" SCH 40S	42,3	508,0	A-403