



Clamp connection

**DIN 32676 / ISO 1127 / ISO 2852 / ASME / BS 4825 ...
Ferrules / gaskets / heavy duty clamps / hose adaptors ...**

Specification:**Dimensions:**

DIN 11850
 ISO 1127
 ISO 2852
 BS 4825
 ASME BPE

Marking:

dimension, material, heat number

Material:

standard: AISI 316L - DIN 1.4404
 on request: DIN 1.4435 - DIN 1.4571 - 1.4301/7 etc.

Material of gaskets:

standard: EPDM
 on demand: silicone - PTFE - VITON - Viton/PTFE and EPDM/PTFE (encapsulated) - Garlock/Gylon ...

Certificate (please write your requirements for certificates in inquiries or orders):

EN 10204 3.1
 EN 10204 3.1 AD-W2 (on demand)
 FDA for gaskets (on demand USP Class IV)

Standard surface:

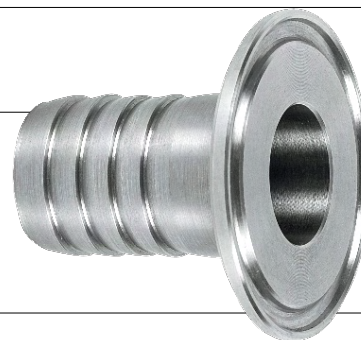
inside: Ra 0,8 µm
 outside: Ra 1,6 µm

Possible variants of inner surface:

electro-chemical polished
 Ra 0,6 µm
 Ra 0,5 µm
 Ra 0,4 µm
 Ra 0,25 µm

Pressures according to standard DIN 32676:

from DN 10 to DN 50 - max. 16 bar
 from DN 65 to DN 200 - max. 10 bar

**Characteristics:****High hygienic quality:**

Perfectly smooth internal surfaces free from retention areas ensure continuous product flow, minimal pressure drop and minimal danger of contamination.

Accurate coupling and alignment:

Perfect roundness at ends and all cross sections allows accurate coupling and alignment.

Ease of installation:

Strict dimensional tolerances ensure fast assembly and low installation costs.

Ease of maintenance:

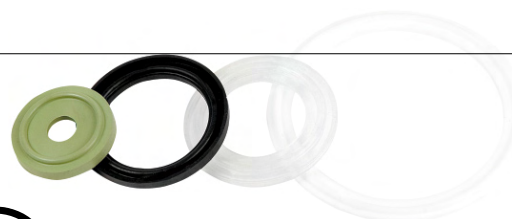
Low maintenance with ease of access.

High corrosion resistance:

Solubilization of products ensures high corrosion resistance and long working life.

Non-toxicity of elastomers:

Broad range of non-toxic, non-absorbent agent-resistant elastomers.



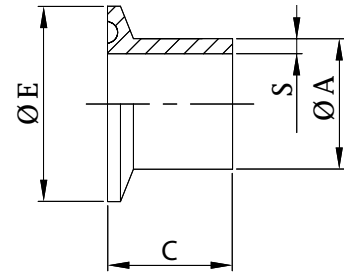
Cod. K14

Ferrule Clamp dle DIN 32676

Material: AISI 316L / DIN 1.4404 (other materials on demand)

Order example:

Clamp K14S - DIN 32676 - DN 10 (12 x 1,5) - diam. 34 - 316L - 1 piece



DIN 32676	connection dimensions* Ø A x S	Ø E	C long K14WL	C* middle K14W	C short K14S
DN 4	6,0 x 1,0	25,0	35,0	18,0 (28,0)	12,7
DN 4	6,0 x 1,0	34,0	35,0	18,0 (28,0)	12,7
DN 6	8,0 x 1,0	25,0	35,0	18,0 (28,0)	12,7
DN 6	8,0 x 1,0	34,0	35,0	18,0 (28,0)	12,7
DN 8	10,0 x 1,0	25,0	35,0	18,0 (28,0)	12,7
DN 8	10,0 x 1,0	34,0	35,0	18,0 (28,0)	12,7
DN 10	12,0 x 1 (1,5)	25,0	35,0	18,0 (28,0)	12,7
DN 10	12,0 x 1 (1,5)	34,0	35,0	18,0 (28,0)	12,7
DN 10	12,0 x 1 (1,5)	50,5	35,0	18,0 (28,0)	12,7
DN 10	13,0 x 1,5	25,0	35,0	18,0 (28,0)	12,7
DN 10	13,0 x 1,5	34,0	35,0	18,0 (28,0)	12,7
DN 10	13,0 x 1,5	50,5	35,0	18,0 (28,0)	12,7
DN 15	18,0 x 1,5	25,0	35,0	18,0 (28,0)	12,7
DN 15	18,0 x 1,5	34,0	35,0	18,0 (28,0)	12,7
DN 15	18,0 x 1,5	50,5	35,0	18,0 (28,0)	12,7
DN 15	19,0 x 1,5	25,0	35,0	18,0 (28,0)	12,7
DN 15	19,0 x 1,5	34,0	35,0	18,0 (28,0)	12,7
DN 15	19,0 x 1,5	50,5	35,0	18,0 (28,0)	12,7
DN 20	22,0 x 1,5	34,0	35,0	18,0 (28,0)	12,7
DN 20	22,0 x 1,5	50,5	35,0	18,0 (28,0)	12,7
DN 20	23,0 x 1,5	34,0	35,0	18,0 (28,0)	12,7
DN 20	23,0 x 1,5	50,5	35,0	18,0 (28,0)	12,7
DN 25	28,0 x 1,5	50,5	39,0	21,5 (28,0)	12,7
DN 25	29,0 x 1,5	50,5	39,0	21,5 (28,0)	12,7
DN 32	34,0 x 1,5	50,5	39,0	21,5 (28,0)	12,7
DN 32	35,0 x 1,5	50,5	39,0	21,5 (28,0)	12,7
DN 40	40,0 x 1,5	50,5	39,0	21,5 (28,0)	12,7
DN 40	41,0 x 1,5	50,5	39,0	21,5 (28,0)	12,7
DN 50	52,0 x 1,5	64,0	41,0	21,5 (28,0)	12,7
DN 50	53,0 x 1,5	64,0	41,0	21,5 (28,0)	12,7
DN 65	70,0 x 2,0	91,0	49,0	28,0	15,8
DN 80	85,0 x 2,0	106,0	49,0	28,0	15,8
DN 100	104,0 x 2,0	119,0	49,0	28,0	-
DN 125	129,0 x 2,0	155,0	49,0	28,0	-
DN 150	154,0 x 2,0	183,0	49,0	28,0	-
DN 200	204,0 x 2,0	233,5	49,0	28,0	-
DN 250	254,0 x 2,0	268,0	49,0	28,0	-
DN 300	304,0 x 2,0	319,0	49,0	28,0	-

BS 4825	connection dimensions* Ø A x S	Ø E	C long K14WL	C* middle K14W	C short K14S
DN 1"	25,65 x 1,725	50,5	-	21,5	-
DN 1½"	38,35 x 1,725	50,5	-	21,5	-
DN 2"	51,05 x 1,725	64,0	-	21,5	-
DN 2½"	63,75 x 1,725	77,5	on request	21,5	on request
DN 3"	76,45 x 1,725	91,0	on request	21,5	on request
DN 4"	101,85 x 2,125	119,0	on request	21,5	on request
DN 4½"	114,95 x 2,325	130,0	on request	28,0	on request
DN 5½"	140,55 x 2,425	155,0	on request	28,0	on request
DN 6 "	169,35 x 3,125	183,0	-	28,0	-
DN 8 "	220,55 x 3,325	233,5	-	28,0	-

* () dimensions on request

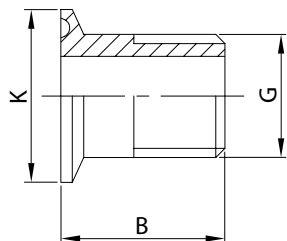
ISO 1127	connection dimensions* Ø A x S	Ø E	C long K14WL	C* middle K14W	C short K14S
DN 8	13,5 x 1,6 (2,0)	25,0	35,0	18,0 (28,0)	12,7
DN 8	13,5 x 1,6 (2,0)	34,0	35,0	18,0 (28,0)	12,7
DN 8	13,5 x 1,6 (2,0)	50,5	35,0	18,0 (28,0)	12,7
DN 10	17,2 x 1,6 (2,0)	25,0	35,0	18,0 (28,0)	12,7
DN 10	17,2 x 1,6 (2,0)	34,0	35,0	18,0 (28,0)	12,7
DN 10	17,2 x 1,6 (2,0)	50,5	35,0	18,0 (28,0)	12,7
DN 15	21,3 x 1,6 (2,0)	34,0	35,0	18,0 (28,0)	12,7
DN 15	21,3 x 1,6 (2,0)	50,5	35,0	18,0 (28,0)	12,7
DN 20	26,9 x 1,6 (2,0)	50,5	39,0	21,5 (28,0)	12,7
DN 25	33,7 x 2,0	50,5	39,0	21,5 (28,0)	12,7
DN 32	42,4 x 2,0	50,5	39,0	21,5 (28,0)	12,7
DN 32	42,4 x 2,0	64,0	39,0	21,5 (28,0)	12,7
DN 40	48,3 x 2,0	64,0	41,0	21,5 (28,0)	12,7
DN 50	60,3 x 2,0	77,5	43,0	28,0	12,7
DN 65	76,1 x 2,0	91,0	49,0	28,0	15,8
DN 80	88,9 x 2,3	106,0	49,0	28,0	15,8
DN 100	114,3 x 2,3	130,0	49,0	28,0	15,8
DN 125	139,7 x 2,6	155,0	-	28,0	-
DN 150	168,3 x 2,6	183,0	-	28,0	-
DN 200	219,1 x 2,6	233,5	-	28,0	-

ASME BPE	connection dimensions* Ø A x S	Ø E	C long K14WL	C* middle K14W	C short K14S
DN 1/4"	6,35 x 0,89	25,0	35,0	21,5	12,7
DN 3/8"	9,53 x 0,89	25,0	35,0	21,5	12,7
DN 1/2"	12,7 x 1,65	25,0	35,0	21,5	12,7
DN 3/4"	19,05 x 1,65	25,0	35,0	21,5	12,7
DN 1"	25,4 x 1,65	50,5	39,0	21,5	12,7
DN 1 1/2"	38,1 x 1,65	50,5	39,0	21,5	12,7
DN 2"	50,8 x 1,65	64,0	41,0	21,5	12,7
DN 2 1/2"	63,5 x 1,65	77,5	43,0	28,0	15,8
DN 3"	76,2 x 1,65	91,0	49,0	28,0	15,8
DN 4"	101,6 x 2,11	119,0	49,0	28,0	15,8
DN 6"	152,4 x 2,77	167,0	-	28,0	-

ISO 2852	connection dimensions* Ø A x S	Ø E	C long K14WL	C* middle K14W	C short K14S
DN 1"	25,6 x 1,50	50,5	-	21,5	-
DN 1½"	38,6 x 1,50	50,5	-	21,5	-
DN 2"	51,6 x 1,50	64,0	-	21,5	-
DN 2½"	64,1 x 1,90	77,5	on request	21,5	on request
DN 3"	76,7 x 1,90	91,0	on request	21,5	on request
DN 3½"	89,9 x 2,50	106,0	on request	21,5	on request
DN 4"	102,5 x 2,45	119,0	on request	21,5	on request
DN 4½"	115,6 x 2,65	130,0	on request	28,0	on request
DN 5½"	141,2 x 2,80	155,0	on request	28,0	on request
DN 6 "	170,0 x 3,45	183,0	-	28,0	-
DN 8 "	221,2 x 3,65	233,5	-	28,0	-

Adaptor
CLAMP / thread
AISI 304/L, AISI 316/L

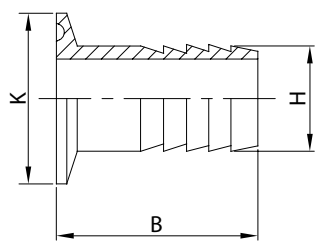
K14B



DN	G	B	K
15	1/2"	48	34
20	3/4"	53	50,5
25	1"	53	50,5
32	1 1/4"	63	50,5
40	1 1/2"	63	64
50	2"	66	77,5
65	2 1/2"	76	91
80	3"	86	106
100	4"	96	130

Hose adaptor
with ferrule CLAMP
AISI 304/L, AISI 316/L

K14R

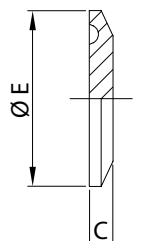


DN	H	B	K
10	13	44	34
15	19 (16)*	58	34
20	21,3	63	34
25	26,9	73	50,5
32	33,7	78	50,5
40	42,4 (40)*	88	50,5
50	52	93	64
63	63,5	126	77,5
65	76,1	126	91
80	83	136	106
100	102	136	119

* option

Blind ferrule
CLAMP
AISI 316/L

K16



E	C
Ø 25,0	4,75
Ø 34,0	6,35
Ø 50,5	6,35
Ø 64,0	6,35
Ø 77,5	6,35
Ø 91,0	7,0
Ø 106,0	8,0
Ø 119,0	8,0
Ø 130,0	8,0
Ø 144,4	8,0
Ø 155,0	12,0
Ø 167,0	*
Ø 183,0	12,0
Ø 217,4	*
Ø 233,5	12,0
Ø 268,0	*
Ø 286,1	*
Ø 319,0	*
Ø 338,0	*

* on demand dimension

Gasket Clamp

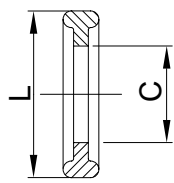
cod. K39 - lipped

cod. K40 - without lip

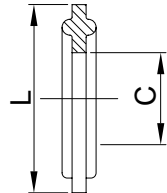
Materials: EPDM - silicone - NBR - Viton - PTFE (Te on) - PTFE/VITON a EPDM/VITON (encapsulated)

Garlock/Gylon BIO-PRO (new)

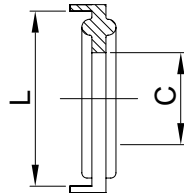
Certificates: on request FDA, on demand USP Class VI



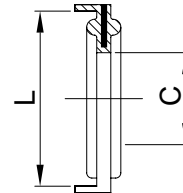
diam. of plate 25 mm



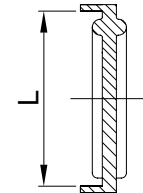
without lip cod. K40



lipped cod. K39



encapsulated



blind

DIN 32676	connection dimensions øA x S	C	L	ASME BPE	connection dimensions øA x S	C	L	ISO 1127	connection dimensions øA x S	C	L
DN 4	6,0 x 1,0	4,2	Ø 21,8	DN 1/4"	6,35 x 0,89	4,8	Ø 21,8	DN 8	13,5 x 1,6	10,5	Ø 21,8
DN 4	6,0 x 1,0	4,2	Ø 34,0	DN 3/8"	9,53 x 0,89	8,0	Ø 21,8	DN 8	13,5 x 1,6	10,5	Ø 34,0
DN 6	8,0 x 1,0	6,2	Ø 21,8	DN 1/2"	12,7 x 1,65	9,6	Ø 21,8	DN 8	13,5 x 1,6	10,5	Ø 50,5
DN 6	8,0 x 1,0	6,2	Ø 34,0	DN 3/4"	19,05 x 1,65	16,0	Ø 21,8	DN 10	17,2 x 1,6	14,2	Ø 21,8
DN 8	10,0 x 1,0	8,2	Ø 21,8	DN 1"	25,4 x 1,65	22,3	Ø 50,5	DN 10	17,2 x 1,6	14,2	Ø 34,0
DN 8	10,0 x 1,0	8,2	Ø 34,0	DN 1 1/2"	38,1 x 1,65	35,0	Ø 50,5	DN 10	17,2 x 1,6	14,2	Ø 50,5
DN 10	12,0 x 1 (1,5)	10,2 (9,2)	Ø 21,8	DN 2"	50,8 x 1,65	47,7	Ø 64,0	DN 15	21,3 x 1,6	18,3	Ø 34,0
DN 10	12,0 x 1 (1,5)	10,2 (9,2)	Ø 34,0	DN 2 1/2"	63,5 x 1,65	60,4	Ø 77,5	DN 15	21,3 x 1,6	18,3	Ø 50,5
DN 10	12,0 x 1 (1,5)	10,2 (9,2)	Ø 50,5	DN 3"	76,2 x 1,65	73,1	Ø 91,0	DN 20	26,9 x 1,6	23,9	Ø 50,5
DN 10	13,0 x 1,5	10,2	Ø 21,8	DN 4"	101,6 x 2,11	97,6	Ø 119,0	DN 25	33,7 x 2,0	29,9	Ø 50,5
DN 10	13,0 x 1,5	10,2	Ø 34,0	DN 6"	152,4 x 2,77	147,1	Ø 167,0	DN 32	42,4 x 2,0	38,6	Ø 50,5
DN 10	13,0 x 1,5	10,2	Ø 50,5					DN 32	42,4 x 2,0	38,6	Ø 64,0
DN 15	18,0 x 1,5	15,2	Ø 21,8	BS 4825	connection dimensions øA x S	C	L	DN 40	48,3 x 2,0	44,5	Ø 64,0
DN 15	18,0 x 1,5	15,2	Ø 34,0	DN 1"	25,65 x 1,725	22,4	Ø 50,5	DN 50	60,3 x 2,0	56,5	Ø 77,5
DN 15	18,0 x 1,5	15,2	Ø 50,5	DN 1 1/2"	38,35 x 1,725	35,1	Ø 50,5	DN 65	76,1 x 2,0	72,3	Ø 91,0
DN 15	19,0 x 1,5	16,2	Ø 21,8	DN 2"	51,05 x 1,725	47,8	Ø 64,0	DN 80	88,9 x 2,3	84,5	Ø 106,0
DN 15	19,0 x 1,5	16,2	Ø 34,0	DN 2 1/2"	63,75 x 1,725	60,5	Ø 77,5	DN 100	114,3 x 2,3	109,9	Ø 130,0
DN 15	19,0 x 1,5	16,2	Ø 50,5	DN 3"	76,45 x 1,725	73,2	Ø 91,0	DN 125	139,7 x 2,6	134,7	Ø 155,0
DN 20	22,0 x 1,5	19,2	Ø 34,0	DN 4"	101,85 x 2,125	97,8	Ø 119,0	DN 150	168,3 x 2,6	163,3	Ø 183,0
DN 20	22,0 x 1,5	19,2	Ø 50,5	DN 4 1/2"	114,95 x 2,325	110,5	Ø 130,0	DN 200	219,1 x 2,6	214,1	Ø 233,5
DN 20	23,0 x 1,5	20,2	Ø 34,0	DN 5 1/2"	140,55 x 2,425	135,9	Ø 155,0				
DN 20	23,0 x 1,5	20,2	Ø 50,5	DN 6 "	169,35 x 3,125	163,3	Ø 183,0	ISO 2852	connection dimensions øA x S	C	L
DN 25	28,0 x 1,5	25,2	Ø 50,5	DN 8 "	220,55 x 3,325	214,1	Ø 233,5	DN 1"	25,6 x 1,50	22,8	Ø 50,5
DN 25	29,0 x 1,5	26,2	Ø 50,5					DN 1 1/2"	38,6 x 1,50	35,8	Ø 50,5
DN 32	34,0 x 1,5	31,2	Ø 50,5					DN 2"	51,6 x 1,50	48,8	Ø 64,0
DN 32	35,0 x 1,5	32,2	Ø 50,5					DN 2 1/2"	64,1 x 1,90	60,5	Ø 77,5
DN 40	40,0 x 1,5	37,2	Ø 50,5					DN 3"	76,7 x 1,90	73,1	Ø 91,0
DN 40	41,0 x 1,5	38,2	Ø 50,5					DN 3 1/2"	89,9 x 2,50	85,1	Ø 106,0
DN 50	52,0 x 1,5	49,2	Ø 64,0					DN 4"	102,5 x 2,45	97,8	Ø 119,0
DN 50	53,0 x 1,5	50,2	Ø 64,0					DN 4 1/2"	115,6 x 2,65	110,5	Ø 130,0
DN 65	70,0 x 2,0	66,2	Ø 91,0					DN 5 1/2"	141,2 x 2,80	135,9	Ø 155,0
DN 80	85,0 x 2,0	81,2	Ø 106,0					DN 6 "	170,0 x 3,45	163,3	Ø 183,0
DN 100	104,0 x 2,0	100,2	Ø 119,0					DN 8 "	221,2 x 3,65	214,1	Ø 233,5
DN 125	129,0 x 2,0	125,2	Ø 155,0								
DN 150	154,0 x 2,0	150,2	Ø 183,0								
DN 200	204,0 x 2,0	200,2	Ø 233,5								
DN 250	254,0 x 2,0	250,2	Ø 268,0								
DN 300	304,0 x 2,0	300,2	Ø 319,0								

Characteristics code	EPDM "E"	silicone "S"	PTFE "T"	Viton "V"	Garlock/Gylon "G"
temperature	-30 °C to + 140 °C	-50 °C to + 200 °C	-40 °C to + 150 °C	-15 °C to + 220 °C	-210 °C to + 260 °C
diluted acids basis	A/B	C	A	C	pressure: 55 bar
vegetable and animal fats and oils	A/B	C	A	X	compress.: 22-45%
mechanical characteristics under traction	B/C	B	A	A	excellent chemical
resistance to abrasive wear	B	C	B	B	resistant
permanent (plastic) deformation	B/C	C/X	A	B	
colour	A (100 °C)	A/B (175 °C)	-	A (175 °C)	
	black	red / white	white	green	

A... excellent B... good C... average X... poor

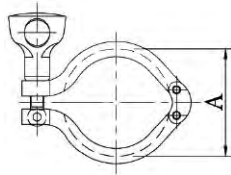
armat@armat.cz
<http://www.armat.cz>
 Fax: +420 465 585 254



ARMAT spol. s r. o.
 etová 82, 561 41 Czech Republic
 Tel.: + 420 465 585 258 / 030 / 031

Cod. K12

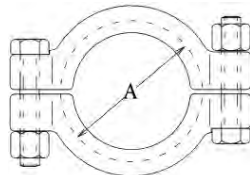
Heavy duty Clamp
Material: AISI 304



DN		ASME BPE	Ø diameter of plate	A	kg
DIN 32676	ISO 1127				
	8-10	¼"-¾"	25,0	28,0	0,15
10-15-20			34,0	37,0	0,17
25-32-40	15-32	1"-1½"	50,5	53,0	0,22
50	40	2"	64,0	67,0	0,30
	50	2½"	77,5	80,0	0,35
65	65	3"	91,0	94,0	0,40
80	80	3½"	106,0	109,0	0,44
100		4"	119,0	122,0	0,50
	100		130,0	133,0	0,58
		5"	144,4	147,0	0,77
125	125		155,0	158,0	1,30
		6"	167,0	170,0	1,40
150	150		183,0	187,0	1,54
200	200		233,5	238,0	2,02

Cod. K12SSH

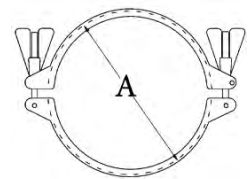
Heavy duty Clamp
Material: AISI 304
for higher pressures



DN		ASME BPE	Ø diam. of plate	A	max. press. at 150°C	kg
DIN 32676	ISO 1127					
	8-10	¼"-¾"	25,0	28,0	80	0,16
10-15-20			34,0	37,0	80	0,22
25-32-40	15-32	1"-1½"	50,5	52,0	80	0,66
50	40	2"	64,0	65,5	55	0,82
	50	2½"	77,5	79,0	50	0,94
65	65	3"	91,0	92,5	45	1,02
80	80	3½"	106,0	109,0	40	1,07
100		4"	119,0	122,0	40	1,27
	100		130,0	133,0	40	1,33
		6"	167,0	168,0	30	1,93
150	150		183,0	187,0	25	2,11
200	200		233,5	238,0	20	2,52

Cod. K12SH

Objímka CLAMP dvoudílná
Material: AISI 304

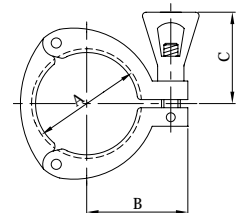


DN		ASME BPE	Ø diam. of plate	A	max. press. at 150°C	kg
DIN 32676	ISO 1127					
150	150	6"	183,0	187,0	10	1,69
		8"	217,4	220,0	10	2,19
200	200	8"	233,5	238,0	10	2,34
250		10"	268,0	272,0	5	2,78
	250	10"s.5	286,1	289,5	4	2,97
300		12"	319,0	322,0	2	3,37
	300	12"s.5	338,0	340,0	2	3,69



Cod. K13

Heavy duty Clamp 3-part
Material: AISI 304



DN	Ø diam. of plate	A	B	C	kg
25	50,5	53,4	45,0	53,0	0,270
38	50,5	53,4	45,0	53,0	0,270
51	64,0	67,0	51,5	53,0	0,330
63	77,5	80,4	58,2	53,0	0,395
76	91,0	94,0	65,0	53,0	0,425
101	119,0	122,0	81,0	53,0	0,540

