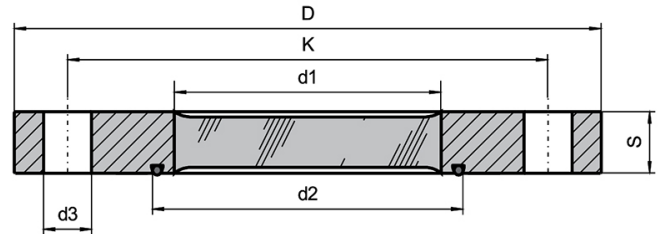
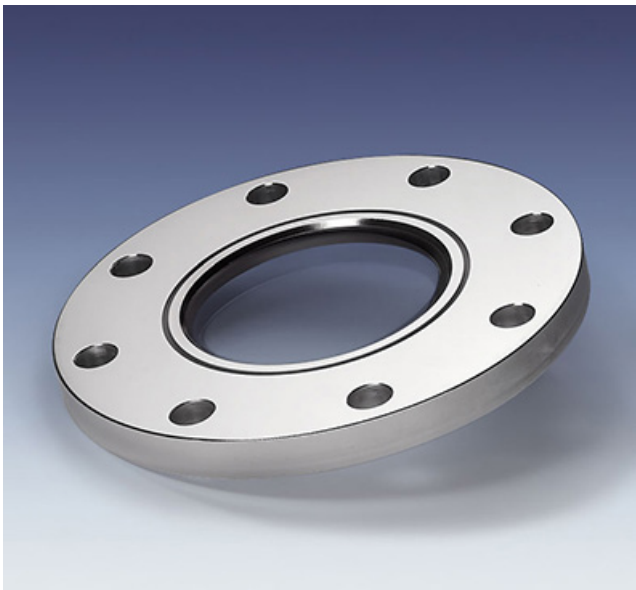


Bolt-on Sight Glass for Sterile Applications type 19.BIO



Applications:

- Aseptic and sanitary applications
- Base flange to DIN 28117 or similar
- Weld neck with flat face

Advantages:

- Reliability against total failure. The possibility of unexpected rupture is excluded
- Effortless cleaning for sterile applications
- Flush glass/metal border on outer side for easy cleaning
- Maximum viewing area

Operating conditions:

- Pressure: -1 to 16 bar
- Temperature: see table

O-Ring:

- AS 568 A / B.S. 1806

Ring materials	Operating temperature
1.4462	-30 °C to +280 °C
2.4602	-60 °C to +300 °C
2.4605	-60 °C to +300 °C
2.4610	-60 °C to +300 °C

Technical data:

Manufactured and tested to:

- Directive for pressure equipment 2014/68/EU, Module H (DIN/EN/ISO 9001)
- AD2000 Standards W0/TRD 100
- Sight glass fused to metal conforming to DIN 7079
- Materials to VdTÜV specifications and the DIN/EN designated standards

Material certificates:

- Certificate of Conformity to EN 10204-3.1 or 3.2

Materials:

- Glass: Borosilicate to DIN 7080 / DIN 7079

Approvals:

- TÜV-Approval in accordance with the governing standards (for pressure vessels) (With Duplex Stainless Steel (DIN 1.4462))

Important:

- Only for use with parallel flat face flange without seal recess. Maximum torque 20 Nm.

- We therefore recommend the use of Belleville spring washers, 2 pcs. for each connection hole.

NW	PN	D	K	S	d1	d2	d3	Connection holes	O-Ring	Spring washers
50	16	165	125	21	50	66	18	4	58,74 x 3,53	31,5/16,3 x 1,25
65	16	185	145	23	70	86	18	4	78,97 x 3,53	31,5/16,3 x 1,25
80	16	200	160	23	80	96	18	8	88,50 x 3,53	31,5/16,3 x 1,25
100	16	220	180	23	90	116	18	8	107,5 x 3,53	31,5/16,3 x 1,25
125	16	250	210	25	110	141	18	8	132,9 x 3,53	31,5/16,3 x 1,25
150	16	285	240	28	130	165	22	8	158,34 x 3,53	40/20,4 x 1,5
200	10	340	295	30	140	208	22	8	202,8 x 3,53	40/20,4 x 1,5