



- High strength construction.
- Pyrex glass. On request plexiglas external guard.
- Equipped with special tie rods and seals to prevent load pressures and vibrations on the glass.
- Standard finish: 120 grain external polishing and internal glazing. Other finishes on request.
- Maximum operating pressure: 10 bars.

Coding - sight glass:

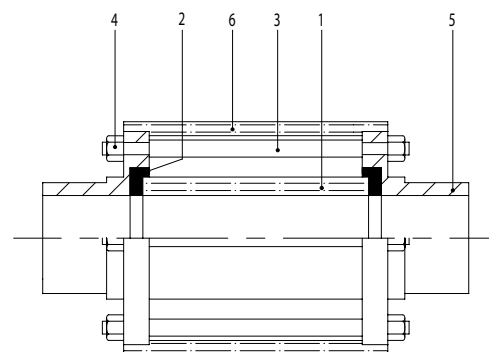
Pos.	cod.	Norm	1" 25	D25 28	D32 34	1 1/2" 38	D40 40	2" 51	D50 52	2 1/2" 63	D65 70	3" 76	D80 85	4" 101	D100 101	4" 104	D100 104	Mat.
1	450		25	28	34	38	40	51	52	63	70	76	85	101	101	104	104	P
2	450		25	28	34	38/40	38/40	51/52	51/52	63	70	76	85	101	101	104	104	S/E/V/T
3	450		25/104	25/104	25/104	25/104	25/104	25/104	25/104	25/104	25/104	25/104	25/104	25/104	25/104	25/104	25/104	4L
4	450		25/104	25/104	25/104	25/104	25/104	25/104	25/104	25/104	25/104	25/104	25/104	25/104	25/104	25/104	25/104	4L
5	450	L	25	28	34	38	40	51	52	63	70	76	85	101	101	104	104	4L/6L
6	450		25	28	34	38/40	38/40	51/52	51/52	63	70	76	85	101/104	101/104	101/104	101/104	PG

Pyrex glass: standard DIN

DN	Ø outside	Thickness	H
DN 25	32,0	2,3	90
DN 32	40,0	3,2	90
DN 40	45,0	5,0	90
DN 50	60,0	5,0	90
DN 65	75,0	5,0	90
DN 80	90,0	5,0	90
DN 100	115,0	6,0	90
DN 125	140,0	7,0	90

Gaskets: standard DIN

DN	Ø outside
DN 25	36,0
DN 32	44,0
DN 40	49,0
DN 50	64,0
DN 65	79,0
DN 80	94,0
DN 100	120,0
DN 125	144,0



Pyrex glass: standard SMS, CLAMP

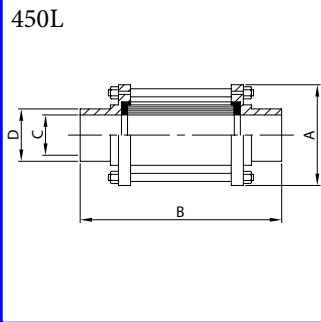
DN	Ø outside	Thickness	H
DN 25 1"	30,0	4,5	90
DN 38 1 1/2"	45,0	5,0	90
DN 51 2"	60,0	5,0	90
DN 63 2 1/2"	70,0	5,0	90
DN 76 3"	80,0	5,0	90
DN 101 4"	115,0	6,0	90

Gaskets: standard SMS, CLAMP

DN	Ø outside
DN 25 1"	34,0
DN 38 1 1/2"	49,0
DN 51 2"	64,0
DN 63 2 1/2"	74,0
DN 76 3"	84,0
DN 101 4"	120,0

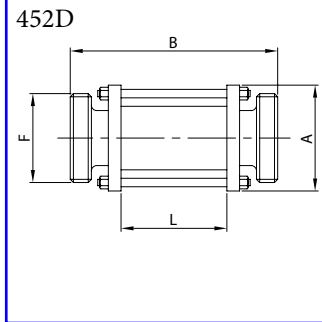
1. Pyrex pipe
2. Seal
3. Tie-rod
4. Self-locking nut
5. Flange
6. Guard

Sight glass
plain ends
AISI 304L, AISI 316L



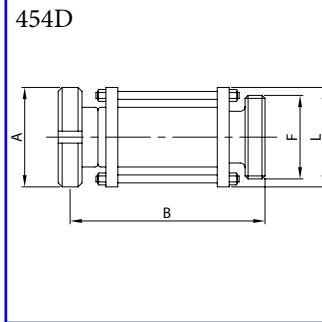
DN	A	B	C	D	Kg
28	60,0	143,0	25,0	28,0	0,40
34	65,0	149,0	31,0	34,0	0,50
40	70,0	153,0	37,0	40,0	0,68
52	85,0	157,0	49,0	52,0	0,86
70	100,0	163,0	66,0	70,0	1,09
85	115,0	169,0	81,0	85,0	1,28
101	140,0	173,0	97,6	101,6	2,76
104	140,0	173,0	100,0	104,0	2,76

Sight glass
male part / male part
AISI 304L, AISI 316L



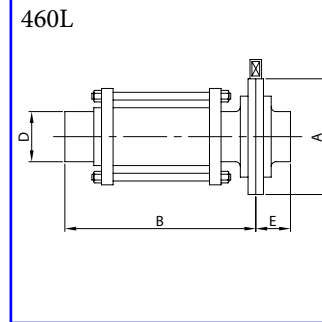
DN	A	B	F	L	Kg
25	60,0	157,0	52-6	83,0	0,61
32	65,0	157,0	58-6	83,0	0,70
40	70,0	157,0	65-6	83,0	0,92
50	85,0	157,0	78-6	83,0	1,23
65	100,0	161,0	95-6	83,0	1,52
80	115,0	171,0	110-4	83,0	1,77
100	140,0	171,0	130-4	83,0	3,37
104	140,0	171,0	130-4	83,0	3,37

Sight glass
taper part with nut / male end
AISI 304L, AISI 316L



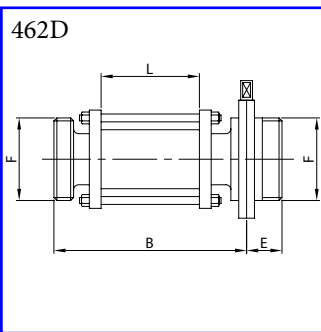
DN	A	B	F	L	Kg
25	63,0	157,0	52-6	60,0	0,75
32	70,0	160,0	58-6	65,0	0,90
40	78,0	161,0	65-6	70,0	1,18
50	92,0	163,0	78-6	85,0	1,60
65	112,0	169,0	95-6	100,0	2,20
80	127,0	179,0	110-4	115,0	2,63
100	148,0	181,0	130-4	140,0	4,79
104	148,0	181,0	130-4	140,0	4,79

Sight glass
plain end / butterfly valve
AISI 304L, AISI 316L



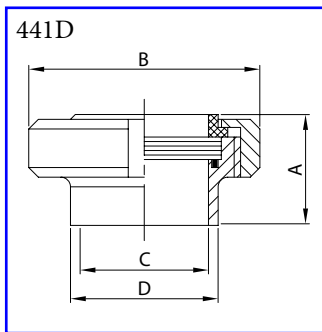
DN	A	B	D	E	Kg
28	79,0	151,0	28,0	34,0	0,76
34	85,0	154,0	34,0	38,0	0,90
40	92,0	156,0	40,0	38,0	1,18
52	105,0	158,0	52,0	40,0	1,50
70	125,0	162,0	70,0	41,0	1,97
85	137,0	165,0	85,0	42,0	2,43
101	157,0	167,0	101,6	44,0	4,18
104	157,0	167,0	104,0	44,0	4,18

Sight glass
male end / butterfly valve ME
AISI 304L, AISI 316L



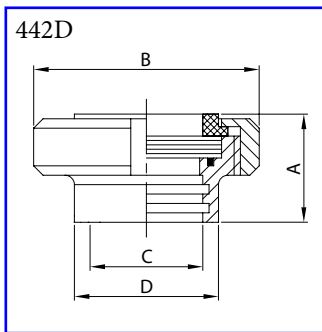
DN	B	E	F	L	Kg
25	158,0	34,0	52-6	83,0	1,09
32	158,0	34,0	58-6	83,0	1,31
40	158,0	38,0	65-6	83,0	1,65
50	158,0	38,0	78-6	83,0	2,17
65	161,0	38,0	95-6	83,0	2,65
80	166,0	41,5	110-4	83,0	3,37
100	166,0	44,0	130-4	83,0	5,33
104	166,0	44,0	130-4	83,0	5,33

Sight glass
welding end
AISI 304L, AISI 316L



DN	A	B	C	D	Kg
25	35,0	63,0	25,0	28,0	0,35
32	38,0	70,0	31,0	34,0	0,42
40	39,0	78,0	37,0	40,0	0,53
50	42,0	92,0	49,0	52,0	0,73
65	47,0	112,0	66,0	70,0	1,11
80	52,0	127,0	81,0	85,0	1,59
100	62,0	148,0	97,6	101,6	2,38
104	62,0	148,0	100,0	104,0	2,38

Sight glass
expanding end
AISI 304L, AISI 316L



DN	A	B	C	D	Kg
25	35,0	63,0	28,0	35,0	0,35
32	38,0	70,0	34,0	41,0	0,42
40	39,0	78,0	40,0	48,0	0,53
50	42,0	92,0	52,0	61,0	0,73
65	47,0	112,0	70,0	79,0	1,11
80	52,0	127,0	85,0	93,0	1,59
100	62,0	148,0	101,6	114,0	2,38
104	62,0	148,0	104,0	114,0	2,38