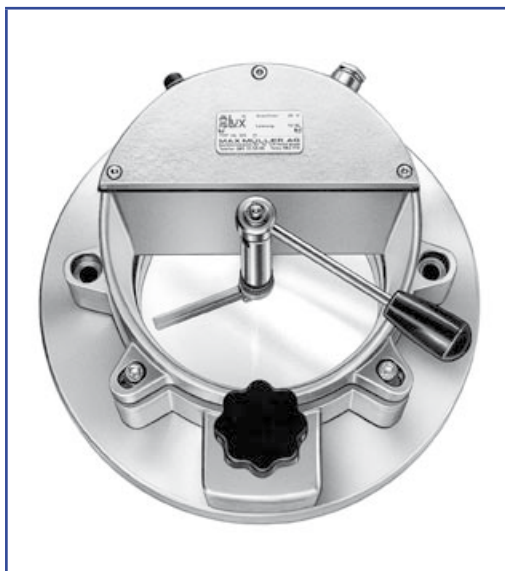




## Hinged sightglasses type: KSGB / KSG

Hinged sightglasses  
with or without illumination



Hinged illuminated sightglass type KSGB 125. Terminal voltage of built-on light fitting 24 V, nominal rating 50 or 100 watts. Built-in wiper, series W.

The hinged sightglasses of the series KSG / KSGB represent the combination of an illuminated / non illuminated sightglass with a mechanism for quick and easy opening and closing of the combined unit.

### Application:

- Mainly where a chemical or physical process needs a quick addition of components (e.g. of a powder or a liquid) or where samples of the vessel contents have to be taken regularly or sporadically for control purposes. **The application of the standard version of the illuminated units is restricted to safe area use.**

### Conditions of service:

- Maximum pressure inside the vessel: type KSG(B) 125: 1.0 bar  
type KSG(B) 200: 0.5 bar  
Higher pressures on demand.
- Vacuum
- Maximum temperatures: 200 °C with glass disc of borosilicate (DIN 7080)  
150 °C with glass disc of sodium silicate (DIN 8902)  
Higher temperatures on demand.
- With mounted metaLUX® light fitting with push-button, the temperature inside the connection box should not exceed 100 °C.

### Attention:

- Never open under pressure!

### Electrical characteristics: (For type KSGB with mounted light fitting)

- Supply: AC or DC
- Terminal voltages: 24 V (12 V possible)
- Nominal rating: 50 / 100 W (see table overleaf)
- Bulb: halogen, socket GY 6.35
- Transformers in protection modes IP 00 or IP 65 for different primary voltages may be supplied on demand.

### Enclosure protection degree:

- IP 65, dust and spray water tight.

### Mounting:

- The unit is supplied completely premounted. Before welding of the flange, the light fitting with the hinge mechanism have to be separated from it.

### Assembly:

- The picture left shows the typical construction elements:
  - A) Light fitting metaLUX®, series HL
  - B) Light fitting holder
  - C) Welding flange
  - D) Closing bolt with grip head
  - E) Closing head
  - F) Tilting hinge
  - G) Cover of the metaLUX® light fitting

### Options:

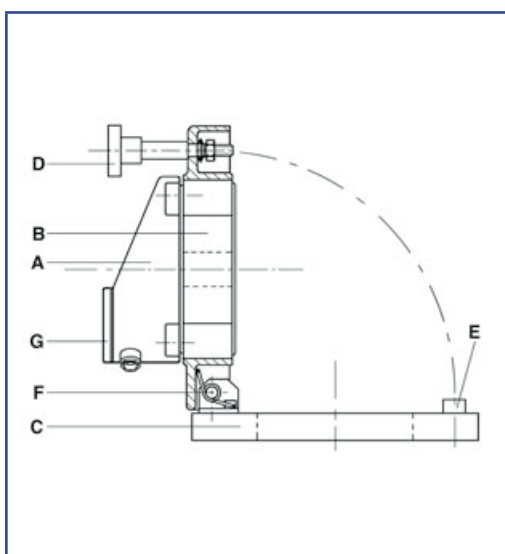
- Wiper series W / WD (see separate data sheet).
- Delivery without light fitting. (Correct type designation is then KSG).
- Light fitting for use in hazardous areas.
- Pieces in contact with the medium in stainless steel.

### Replacement of the bulb:

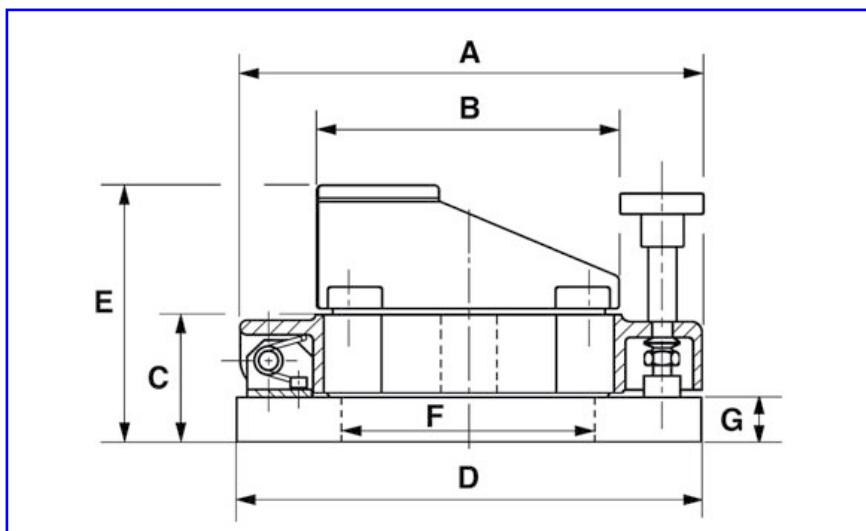
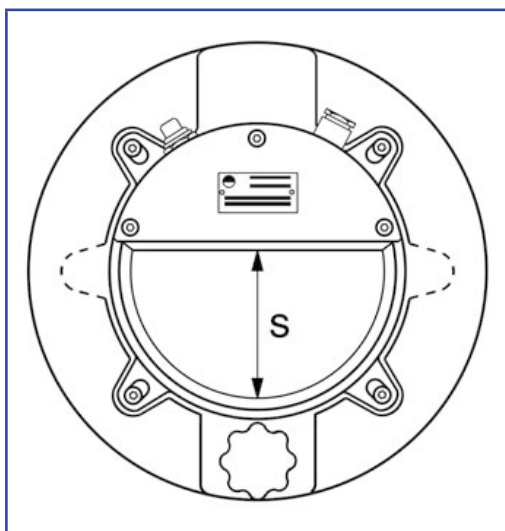
- The bulb may be changed under pressure or vacuum after opening of the cover G): After loosening of its socket, the bulb can be replaced.

### Attention:

- Do only touch with a proper cloth!



Typical assembly of a hinged illuminated sightglass series KSGB.



Type	KSG(B) 125	KSG(B) 200
A	248	333
B	162	245
C	70	80
D	250	335
E	140	175
F	136	205
G	25	25
S	80	140
Terminal voltage(V)	24 / 12	24 / 12
Nominal rating (W)	50 / 100	50 / 100

### Materials and construction:

- Light fitting / light fitting holder:  
Corrosion resistant cast aluminium alloy. On demand painted RAL 9001).
- Welding flange:  
Carbon steel (RSt 37-2)  
Stainless steel DIN 1.4571 (= AISI 316 Ti) (Standard)  
DIN 1.4541 (=AISI 321) / 1.4301 (=AISI 304)  
or other materials on demand
- Glass disc:  
Sodium silicate to DIN 8902  
Borosilicate to DIN 7080
- Sealings:  
Silicone (standard)  
Viton, perbunan
- Closing parts:  
Carbon steel, zinked and aluminium alloy
- Head of grip:  
Plastic

Do you wish for more information about our wide range of light fittings for use in hazardous or safe areas, about our range of circular sightglasses to DIN 28120/28121, screwed sightglasses similar to DIN 11851, rectangular or D-ended sightglasses, pipeline flow indicators, sideways or centrally operated wipers, hinged sightglasses, spraying devices or our complete sight and lightglass units VETROLUX®? Are you interested in other types, special versions or different protection degrees? If yes, please contact us – it is our business! You will find the necessary indications about our company on the Internet.

1) All dimensions in mm.

2) Subject to changes without preliminary notice.