



## Flow indicators

type: S-VA

S-St

Flow indicators for pipelines  
with ends for welding



Sight flow indicator, series S-VA,  
type S-VA 65



Sight flow indicator, series S-St,  
type S-St 100

### Application:

• VETROLUX® sight flow indicators, series S-VA / S-St with the new DIN lengths, are used for the observation of a flow of liquid in tubes and pipelines. Visibility may be considerably enhanced by combination with our proven light fittings for hazardous and safe areas. (Please see our respective leaflets.)

### Operating conditions:

- Nominal pressure: 10 bar (PN 10)
- PN 6 and PN 16: On request
- Vacuum
- Maximum temperature: 280 °C

### Standard materials:

- Body material (S-VA): DIN 1.4435(AISI 316L)/DIN 1.4404(AISI 316L) (up to DN 100)  
1.4571 (AISI 316 Ti) (from DN 125)
- Body material (S-St): Carbon steel RSt 37-2
- Cover flange: Galvanised RSt 37-2 / C 22.8, zinked
- Bolts: Galvanised socket head screws to DIN 912, 8.8
- Glass discs: Borosilicate glass to DIN 7080 (Standard)  
Sodium silicate glass to DIN 8902 (Option)
- Gasket product side: Graphite
- Gasket cover side: KLINGERSil C 4400
- Other materials are available on request.

### Mounting position:

- No restriction, pay attention to the flow direction!

### Options:

- Security version with double glazing
- Version without “drop-nose” for hygienic applications
- Cover flanges and screws in stainless steel
- With turbine
- With flap

### Remarks:

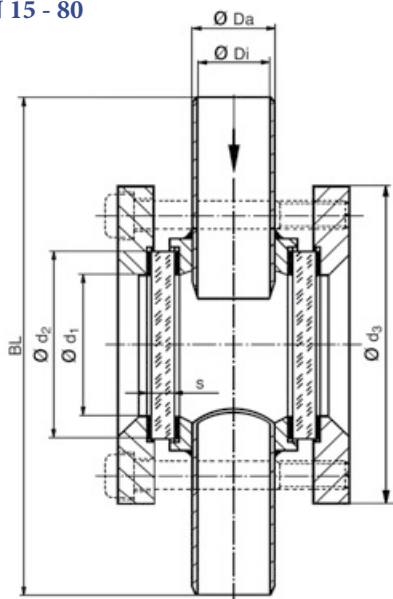
- When enquiring or ordering please always state the nominal pressure (PN) required.

### Ordering example:

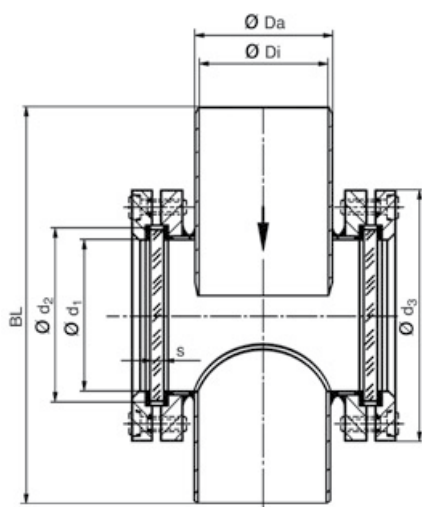
- 1 piece VETROLUX® sight flow indicator for welding into position, body in stainless steel 1.4435 (= AISI 316 L), nominal pressure 10 bar (PN 10), nominal diameter (DN) 65:
- 1 piece S-VA 65-316 L-10-Graphite-KLINGERSil C4400



DN 15 - 80



od DN 100



Type	DN	BL	Ø Da	Ø Di	Ø d3 ∕ d3	Ø d1	number + size of bolts	Ød2	s
S-VA 15	15	124	21,3	18,1	70/70	32	4 x M8	45	10
S-St 15		124		16,0					
S-VA 20	20	144	26,9	23,7	110	48	4 x M10	63	10
S-St 20		144		21,6					
S-VA 25	25	154	33,7	29,7	135	48	4 x M10	63	10
S-St 25		154		27,2					
S-VA 32	32	174	42,4	38,4	135	65	4 x M10	80	12
S-St 32		174		35,9					
S-VA 40	40	194	48,3	44,3	135	65	4 x M12	80	12
S-St 40		194		41,9					
S-VA 50	50	224	60,3	55,1	150	80	4 x M12	100	15
S-St 50		224		53,0					
S-VA 65	65	284	76,1	70,9	150	80	4 x M12	100	15
S-St 65		284		70,3					
S-VA 80	80	304	88,9	83,7	185	100	4 x M12	125	15
S-St 80		303		82,5					
S-VA 100	100	342	114,3	107,9	210	125	8 x M12	150	20
S-St 100		342		107,1					
S-VA 125	125	392	139,7	133,3	240	150	8 x M12	175	20
S-St 125		392		131,7					
S-VA 150	150	470	168,3	161,9	275	175	8 x M16	200	25
S-St 150		471		159,3					
S-VA 200	200	590	219,1	212,7	340	225	8 x M16	250	30
S-St 200		588		207,3					

Do you wish for more information about our wide range of light fittings for use in hazardous or safe areas, about our range of circular sightglasses to DIN 28120/28121, screwed sight-glasses similar to DIN 11851, rectangular or D-ended sightglasses, pipeline flow indicators, sideways or centrally operated wipers, hinged sightglasses, spraying devices or our complete sight and lightglass units VETROLUX®? Are you interested in other types, special versions or different protection degrees? If yes, please contact us – it is our business! You will find the necessary indications about our company on the Internet.

1) All dimensions in mm.

2) Subject to changes without preliminary notice.