

SIGHT GLASSES, LIGHT FITTINGS



Sightglass light fittings type: KLR / KLR PowerLED

Sightglass light fittings in stainless steel for use in safe areas



Sightglass light fitting type KLR PowerLED Sch, 7 W, 230–240 V, mounted with tilting hinge “Sch” on sightglass to DIN 28120, DN 150, PN 10, for application “view and light through one assembly”.



Sightglass light fitting type KLR 100 HD R80 K2, 100 W, 24 V, with built-in momentary push-button “D”, mounted with flange collar “R 80” on screwed sightglass similar to DIN 11851, DN 80, PN 6.

The high performance sightglass light fittings of the series KLR and KLR PowerLED offer the following main features and advantages:

For the purchasing department:

- Very interesting prices due to high series production
- Suitable for continuous use
- **Easiest mounting** by means of a tilting hinge “Sch”/“Sch 1” or a flange collar “R”
- **Brilliant and dazzle free illumination**, even of difficult media
- **Small dimensions** providing high lighting power
- For use in version “view and light through one assembly” as well as for the two port system
- **Cold light outlet** (KLR PowerLED)
- Available with push-button for momentary operation “D” or “on-off” switch “E”

Application:

On sightglasses to DIN 28120 **from DN 40**
 On sightglasses to DIN 28121 **from DN 40**
 On screwed sightglasses similar to DIN 11851 **from DN 65**
 On pipeline sight flow indicators

Operating conditions:

Independent of internal vessel pressure or vacuum.

Construction:

Housing and fixation elements in stainless steel. Cable gland Pg 9, vertical. On request with rectangular cable gland (“K2”). Built-in reflector or LED module. Built-in push-button for momentary operation “D” (types KLR 05 / 10 / 50 and PowerLED also available without, on request). Glass disc resistant against high temperatures. Gaskets resistant against corrosion and alteration.

| Type | KLR 05 HDA ¹ | KLR 10 HDA ¹ | KLR 20 HDA | KLR 50 HDA ¹ | KLR 100 HDA | KLR A PowerLED-S D ¹ | KLR A PowerLED-F D ¹ |
|-------------------------------|----------------------------|----------------------------|---------------|----------------------------|-----------------|------------------------------------|------------------------------------|
| Power | 5 W | 10 W | 20 W | 50 W | 100 W | 7 W | |
| Terminal voltage ² | 36 / 42 / 115 / 240 V AC | | | 12 / 24 V AC / DC | 24 V AC / DC | 24 V AC / DC 230–240 V AC | |
| Light source | Halogene | | | Halogene | | Diodes „spot“ | Diodes „flood“ |
| Socket | G4 | | | GY 6.35 | | – | |
| Weight | 0,90 kg | | | 0,55 kg | | 0,65 kg | |

¹⁾ For the version without push-button, the correct type designation omits the “D”.

²⁾ Transformers with 24 V secondary voltage in open design (IP 00) for mounting into control panels or switch boards as well as in closed version (IP 65) may be supplied for different primary voltages and power capacities.

³⁾ Including the fixation tilting hinge “Sch”/“Sch 1”. (With fixation “R” depending on size).

Enclosure protection degree:

IP 65, dust and spray water tight, to EN 60529 / DIN VDE 0470 part 1.

Admitted for use in food processing industries.

Mounting:

The luminaire is normally mounted by means of its fixation elements, suitably slotted to take a fixing bolt M6. This bolt fits a drilled and tapped hole in the cover flange of a sightglass to DIN 28120 / 28121 or similar. The position of the drilled holes may be taken from the drawings on the back of this leaflet. In case of a mounting with the flange collar “R”, the latter is put under the grooved collar nut of the screwed sightglass similar to DIN 11851 and then the light fitting inserted into the “R” collar and positioned by the screws delivered with the “R” fixation.

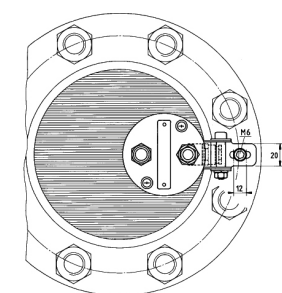
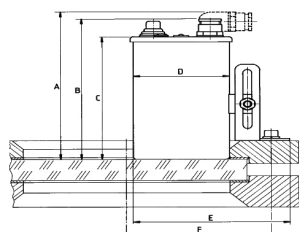
Important remarks:

Please indicate in case of order type and size (DN) of the sightglass on which the luminaire has to be mounted.

The temperature raise of the housing whilst the light fitting is in service has to be observed.

SIGHT GLASSES, LIGHT FITTINGS

Types KLR 05/ 10 / 50 H(D)Sch
Types KLR 20 / 100 HDSch
Types KLR PowerLED (D)Sch

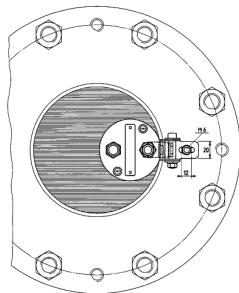
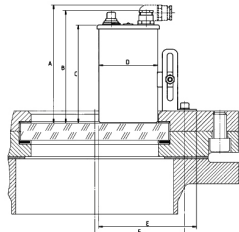


Fixation "Sch"

Sightglass to DIN 28120

| DN | A | B | C | D | E | F |
|-----|-----|-----|-----|----|-----|-----|
| 50 | 141 | 134 | 117 | 70 | 115 | 67 |
| 80 | 141 | 134 | 117 | 70 | 115 | 77 |
| 100 | 141 | 134 | 117 | 70 | 115 | 95 |
| 125 | 141 | 134 | 117 | 70 | 115 | 108 |
| 150 | 141 | 134 | 117 | 70 | 115 | 118 |
| 200 | 141 | 134 | 117 | 70 | 115 | 142 |

Types KLR 05/ 10 / 50 H(D)Sch
Types KLR 20 / 100 HDSch
Types KLR PowerLED (D)Sch

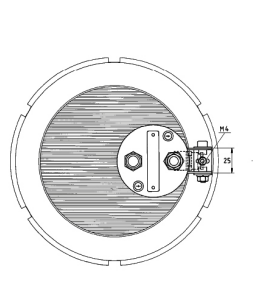
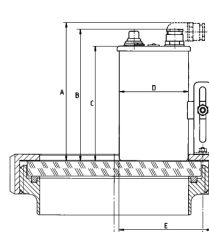


Fixation "Sch"

Sightglass to DIN 28121

| DN | A | B | C | D | E | F |
|-----|-----|-----|-----|----|-----|-----|
| 50 | 141 | 134 | 117 | 70 | 115 | 67 |
| 80 | 141 | 134 | 117 | 70 | 115 | 67 |
| 100 | 141 | 134 | 117 | 70 | 115 | 84 |
| 125 | 141 | 134 | 117 | 70 | 115 | 95 |
| 150 | 141 | 134 | 117 | 70 | 115 | 95 |
| 200 | 141 | 134 | 117 | 70 | 115 | 110 |

Types KLR 05/ 10 / 50 H(D)Sch1
Types KLR 20 / 100 HDSch1
Types KLR PowerLED (D)Sch1

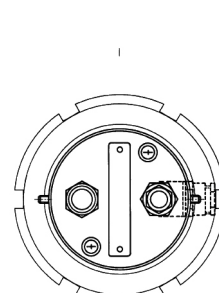
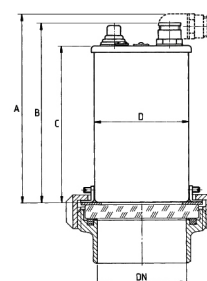


Fixation "Sch1"

Screwed sightglass similar to DIN 11851

| DN | A | B | C | D | E | F |
|-----|-----|-----|-----|----|----|----|
| 65 | 141 | 134 | 117 | 70 | 94 | 39 |
| 80 | 141 | 134 | 117 | 70 | 94 | 47 |
| 100 | 141 | 134 | 117 | 70 | 94 | 57 |
| 125 | 141 | 134 | 117 | 70 | 94 | 69 |
| 150 | 141 | 134 | 117 | 70 | 94 | 82 |

Types KLR 05/ 10 / 50 H(D)R
Types KLR 20 / 100 HDR
Types KLR PowerLED (D)R



Fixation "R"

Screwed sightglass similar to DIN 11851

| DN | A | B | C | D |
|-----|-----|-----|-----|----|
| 65 | 141 | 134 | 117 | 70 |
| 80 | 141 | 134 | 117 | 70 |
| 100 | 141 | 134 | 117 | 70 |
| 125 | 141 | 134 | 117 | 70 |
| 150 | 141 | 134 | 117 | 70 |

Do you wish for more information about our wide range of light fittings for use in hazardous and safe areas, about our range of circular sightglasses to DIN 28120/28121, screwed sightglasses similar to DIN 11851, rectangular or D-ended sightglasses, pipeline flow indicators, hinged sightglasses with or without illumination, centrally or sideways operated wipers, spraying devices, camera systems for hazardous areas or our complete sight and lightglass units VETROLUX®? Are you interested in other types, special versions or different protection degrees? If yes, please contact us, our branch office or our local agents – it is our business! You will find the necessary information on our sales network on the Internet.