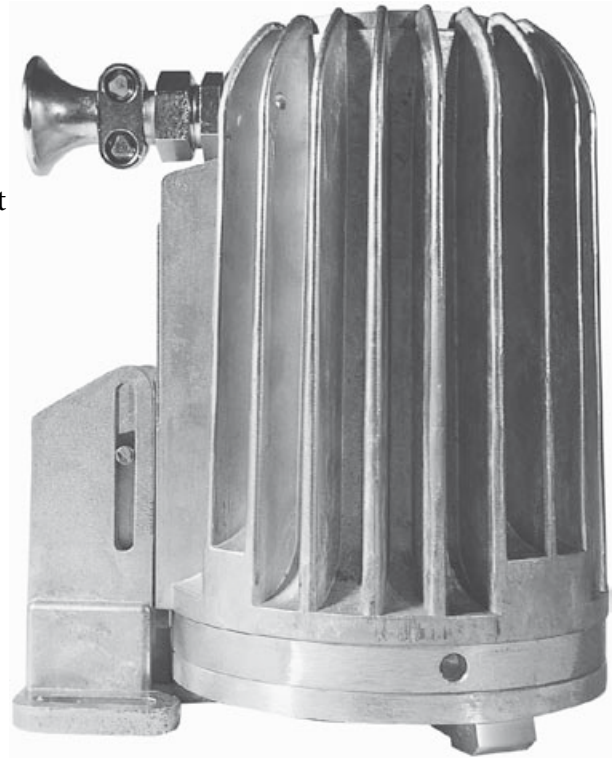




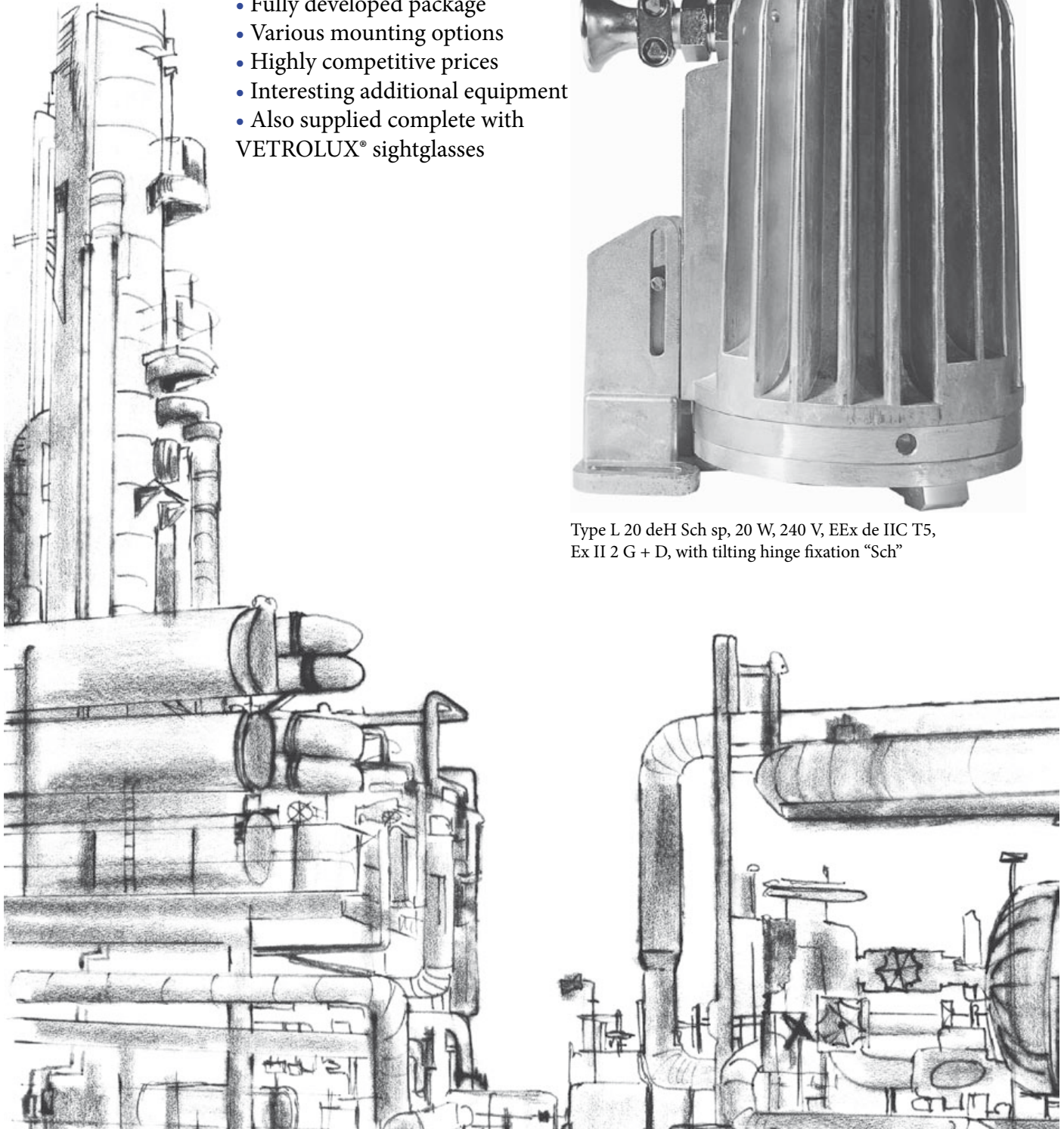
## Sightglass light fittings type: L20deH

The ideal solution for your lighting problems  
in hazardous areas

- Fully developed package
- Various mounting options
- Highly competitive prices
- Interesting additional equipment
- Also supplied complete with VETROLUX® sightglasses



Type L 20 deH Sch sp, 20 W, 240 V, EEx de IIC T5,  
Ex II 2 G + D, with tilting hinge fixation "Sch"





For 30 years, the light fitting of the type L 20 deH has continuously been developed and adapted to maintain its position at the forefront of available technology. In addition to the well known MM quality and reliability, it offers due to an unrivalled range of fixation possibilities, together with an extensive range of options and accessories, the following advantages:

**For the purchasing department:**

- Highly competitive prices due to compact value-engineered design and efficient manufacturing techniques
- Short lead times

**For the design or plant engineer:**

- Easy installation with the availability of 4 fixation systems (tilting hinge "Sch", flange "F", footring "N", tension springs "Z"), covering all the requirements for applications on:
  - Circular sightglasses to DIN 28120 / 28121 or similar
  - Screwed sightglasses similar to DIN 11851
  - Sightflow indicators for pipelines
- Particularly designed for applications with vessels, reactors, agitated tanks and silos, producing brilliant illumination, even in difficult circumstances due to built-in highly polished reflector
- Classified in T5 temperature class
- Light unit may be installed in any orientation without restriction
- Admitted for use in food processing applications
- Available on request fitted with transport handle "T1", thus serving as a hand or portable lamp
- Available for use with different common terminal voltages (see next page)
- To be equipped with energy saving electronic timers "V" / "U". The "V" version permits the operation of the light fitting both on the unit and at a distance, the "U" version at a distance only
- To be equipped with a built-in device for momentary operation "D"

**For maintenance electrician:**

- Quick and easy replacement of bulbs
- Large junction box facilitates easy connection

**For the safety officer:**

- Certified to ATEX in the groups G (zones 1 and 2) and D (zones 21 and 22)
- Available on request with built-in double action safety switch system, cutting the light fitting automatically from the supply source in case of bulb change

**Operating conditions:**

- Completely independent of the vessel internal pressure or vacuum. There is no restriction on the mounting position of the light fitting. Fitted with built-in timer "V" or "U" or the momentary device "D", the light fitting should not be exposed to conditions where the enclosure temperature would be in excess of 100 °C

**Electrical data:**

- Supply: AC or DC, depending on supply voltage (Note: With built-in transformer AC only)
- Terminal voltages: Please refer to table on next page
- Power: 20 W

**Enclosure protection degree:**

- IP 65

**Construction and materials:**

- The lamp housing and fixations are made from corrosion resistant cast aluminium alloy [Anticorodal, Mg <1%]. On request, and at extra charge, painted with a two component acrylic based paint finish "K". Cable gland M 20 x 1,5. Connection at terminals for wires up to 2,5 mm<sup>2</sup>. In addition, an extra external 4 mm<sup>2</sup> earth terminal is provided. When timer "V" or "U" is fitted, a standard operating time of 3 minutes is programmed at our works, other time periods may be specified at the time of ordering. With built-in transformer, the light fitting contains an integrated fuse. Sockets: BA 15 d or G4.

| Designation  |             | L20deH                    |
|--|-------------|---------------------------|
| Nominal rating   | (W)         | 20                        |
| Terminal voltage with built-in transformer               | (V)         | 24, 36, 42, 115, 230, 240 |
| Secondary voltage of built-in transformer                | (V)         | 12                        |
| Bulb   |             | Halogen                   |
| Socket   |             | BA 15 d nebo G4           |
| Weight *   | (kg)        | 4,55                      |
| Ignition protection type to DIN EN 50014 / 50018 / 50019 |             | EEx de                    |
| Explosion group  |             | IIC                       |
| Temperature class  |             | T5                        |
| ATEX   | Ex II 2 G+D | T 95 °C                   |

\* Only light fitting. Fixations: "Sch" 0,3 kg, "Z": 0,27 kg, "F": 0,55 kg, "N" depending on DN

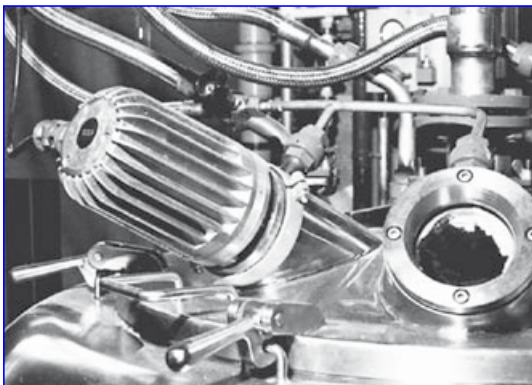


## Mounting possibilities:

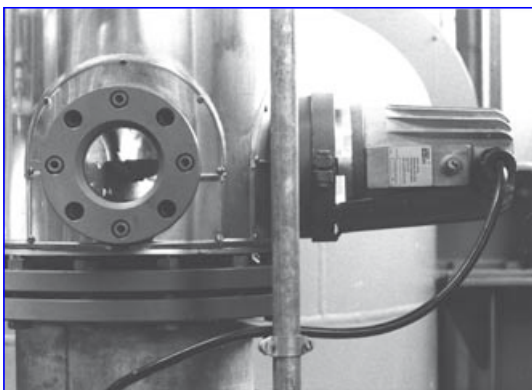
- On sightglasses to or similar to DIN 28120 / 28121: See table below
- On screwed (“dairy”) type sightglasses similar to DIN 11851.
- On sightflow indicators: With the tilting hinge fixation “Sch”, the footing fixation “N” or with specific adaptation by the customer.

| Nominal diameter (DN)       | 50 |   | 80 |   | 100 |   | 125 |   | 150 |   | 200 |   |
|-----------------------------|----|---|----|---|-----|---|-----|---|-----|---|-----|---|
| Sightglass to DIN 28120 (A) | A  |   | A  |   | A   |   | A   |   | A   |   | A   |   |
| Sightglass to DIN 28121 (B) |    | B |    | B |     | B |     | B |     | B |     | B |
| Fixation                    |    |   |    |   |     |   |     |   |     |   |     |   |
| ... N                       | •  | • | •  | • | •   | • |     |   |     |   |     |   |
| ... Z                       |    |   |    |   | •   | • | •   |   |     |   |     |   |
| ... Sch                     |    |   |    |   | •   | • | •   | • |     |   |     |   |

|  |  |
|--|--|
|  | <p><b>Vibration absorbers (silent blocks) ... G</b><br/>           Vibrations from the surrounding plant can have a deleterious effect on the life even of halogen bulbs. Vibration absorbers made from chemically and thermally resistant silicone are offered for use with the tension spring fixation ...Z.</p>   |
|  | <p><b>Transport handle ... T1</b><br/>           This ergonomic and insulated handle makes transport around the plant easy, and also facilitates the use of the light fitting for inspection inside a vessel on a trailing lead.</p>   |
|  | <p><b>Paint finish ... K</b><br/>           The special two component acrylic paint finish protects against corrosion in excessively aggressive environments, and may satisfy customers special aesthetic requirements.</p>  |
|  | <p><b>Flood reflector ... FI</b><br/>           For certain applications, a higher dispersion of the light beam as compared to that of the standard models may be desired. In that cases, a flood reflector-bulb unit which may be installed also at a later stage, is provided.</p>   |
|  | <p><b>Opal glass screen ... M</b><br/>           In some cases, such as in pipeline flow indicator applications, a strong blinding effect occurs. For such situations we offer an opalised glass screen fitted into the unit, which increases the dispersion of the light and eliminates glare.</p>  |
|  | <p><b>Device for momentary operation ... D</b><br/>           In order to cut down on wasted energy and improve the bulb life, the light fitting may be equipped with a built-in device providing momentary illumination. This device cannot be combined with either timer “V” or “U”. (Please refer to our leaflet “switches, pushbuttons and timers”).</p>   |
|  | <p><b>Timers ... U</b><br/>           The timers for operation on the unit or at a distance ...V or at distance only ...U save energy and increase the lifetime of the bulb by limiting operation to approximately 3 minutes. They are particularly recommended for short or sporadic observation of the vessel contents. The timers cannot be combined with the device ...D. (Please refer to our leaflet “switches, push-buttons and timers”).</p> |



CHEMLUX® sightglass light fitting, type L 20 dH Sch, 20 W, 230 V, EEx de IIC T5, Ex II 2 G + D, with fixation "Sch" on a basket centrifuge

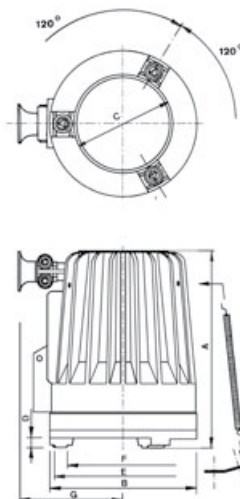


CHEMLUX® sightglass light fitting, type L 20 deHsp, 20 W, 240 V, EEx de IIC T5, Ex II 2 G + D, mounted on top of a distillation column



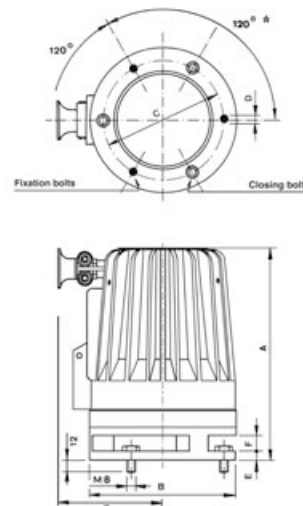
CHEMLUX® sightglass light fitting, type L 20 deH M sp, 20 W, 24 V, EEx de IIC T5, Ex II 2 G + D, mounted with an opal glass screen "M" on a pipeline flow indicator

### Tension spring fixation ... Z



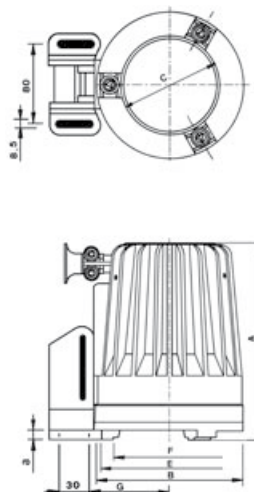
| A   | B   | C  | D  | E   | F   | G   |
|-----|-----|----|----|-----|-----|-----|
| 218 | 145 | 95 | 11 | 139 | 115 | 122 |

### Flange fixation ... F



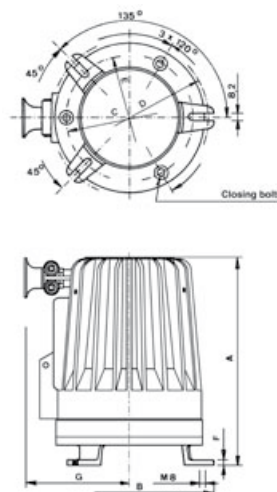
| A   | B   | C   | D   | E | F  | G   |
|-----|-----|-----|-----|---|----|-----|
| 232 | 145 | 115 | 8,5 | 9 | 16 | 122 |

### Tilting hinge fixation ... Sch



| A   | B   | C  | D | E   | F   | G  |
|-----|-----|----|---|-----|-----|----|
| 218 | 145 | 95 | 3 | 139 | 115 | 75 |

### Foot ring fixation ... N



| A   | B   | C   | D   | E   | F | G   |
|-----|-----|-----|-----|-----|---|-----|
| 241 | 165 | 120 | 155 | 135 | 6 | 122 |

Do you wish for more information about our wide range of light fittings for use in hazardous or safe areas, about our range of circular sightglasses to DIN 28120/28121, screwed sightglasses similar to DIN 11851, rectangular or D-ended sightglasses, pipeline flow indicators, sideways or centrally operated wipers, hinged sightglasses, spraying devices or our complete sight and lightglass units VETROLUX®? Are you interested in other types, special versions or different protection degrees? If yes, please contact us – it is our business! You will find the necessary indications about our company on the Internet.

1) All dimensions in mm.

2) Subject to changes without preliminary notice.