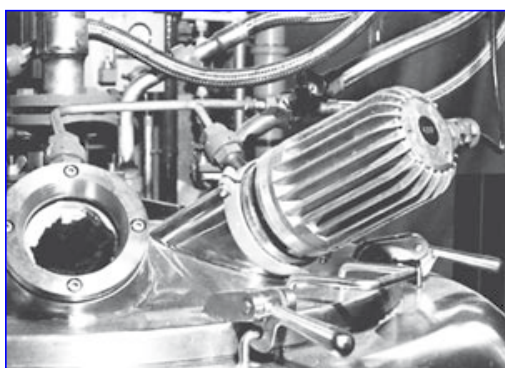




## Sightglass light fittings type: R50deH R100deH 100 deH

Sightglass light fittings  
for use in hazardous areas



High performance sightglass light fitting type  
R 100 deHSch, 100 W, EEx de IIC T3, Ex II 2  
G + D, on a basket centrifuge

**The high performance explosion-proof types R 50 deH, R 100 deH and 100 deH** represent, within their temperature classification, the most powerful sightglass light fittings presently available in Europe. Using these light fittings, new levels of **extremely brilliant** process illumination may be achieved. Efficient manufacturing techniques coupled with extensive component stocks, result in an interesting pricevalue ratio and short delivery times.

### Application:

- In hazardous areas in the groups G (zones 1 and 2) and D (zones 21 and 22) for the illumination of large vessels, tanks, columns, silos, reactors or closed containers with light absorbing linings or contents, for TV-monitoring applications or any situation where high lighting levels are required.

### Operating conditions:

- The light fittings are completely **independent** of the vessel internal pressure or vacuum. They are also **admitted** for use in food processing applications.

### Electrical data:

- Supply: 24 V, AC or DC
- Enclosure protection degree: IP 65

### Construction and materials:

- Housing of corrosion resistant cast aluminium alloy (Anticorodal, <1% Mg). The housings may, on request and at extra charge, be painted with a two component acryl based colour. Cable glands M 20 x 1.5, internal connection suitable for wires up to 2.5 mm<sup>2</sup>. An additional external earth terminal of 4 mm<sup>2</sup> is provided. Built-in special reflector with halogen bulb to produce a concentrated ("spot") or a wide ("flood") beam as required. Standard version: "Spot".

### Fixation systems:

- The following well proven standard fixation systems are available:
  - Tension spring fixation ... Z
  - Flange fixation ... F
  - Tilting hinge fixation ... Sch
  - Foot ring fixation ... N

Please refer overleaf for dimensions

### Mounting:

On sightglasses to DIN 28120 / 28121 or similar:

| Nominal diameter (DN)       |          | 50 |   | 80 |   | 100 |   | 125 |   | 150 |   | 200 |   |
|-----------------------------|----------|----|---|----|---|-----|---|-----|---|-----|---|-----|---|
| Sightglass to DIN 28120 (A) |          | A  |   | A  |   | A   |   | A   |   | A   |   | A   |   |
| Sightglass to DIN 28121 (B) |          |    | B |    | B |     | B |     | B |     | B |     | B |
| Type                        | Fixation |    |   |    |   |     |   |     |   |     |   |     |   |
| R50deH<br>R100deH           | ... N    | •  | • | •  | • | •   | • |     |   |     |   |     |   |
|                             | ... Z    |    |   |    |   | •   | • |     | • |     |   |     |   |
|                             | ... Sch  |    |   |    |   | •   | • |     | • |     | • |     |   |
| 100deH                      | ... N    |    |   | •  | • | •   | • | •   | • | •   | • | •   | • |
|                             | ... Z    |    |   |    |   |     |   |     |   | •   |   | •   |   |
|                             | ... Sch  |    |   |    |   |     |   | •   |   | •   |   | •   |   |

### On screwed ("dairy" type) sightglasses similar to DIN 11851:

On special grooved collar nuts. (On enquiry please state the nominal diameter [DN]). (**Only** types R 50 deH / R 100 deH with foot ring fixation "N")

### On sightflow indicators:

With the tilting hinge fixation "Sch", the foot ring fixation "N" or with specific adaptation by the customer.

### Remarks:

The light fittings may be **installed in any position without restriction**. There is **no prescription** as to the quality or materials of the supply cable.

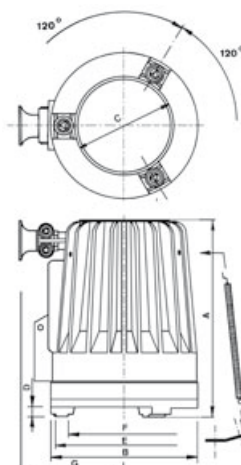


High performance sightglass light fitting type  
100 deHN, 100 W, 24 V, EEx de IIC T4, Ex II  
2 G + D, foot ring fixation on sightglass to DN  
28120, PN 10, DN 125

| Type designation                                      | R50deH   | R100deH  | 100deH   |
|---|----------|----------|----------|
| Nominal rating (W)                                    | 50       | 100      | 100      |
| Terminal voltage (V)                                  | 12 / 24  | 24       | 12/24    |
| Bulb  | Halogen  | Halogen  | Halogen  |
| Socket  | GY 6.35  | GY 6.35  | GY 6.35  |
| Weight* (kg)  | 3,6      | 3,6      | 6,7      |
| Ignition protection type DIN EN 50014 / 50018 / 50019 | EEX de   | EEx de   | EEx de   |
| Explosion group                                       | IIC      | IIC      | IIC      |
| Temperature class                                     | T4       | T3       | T4       |
| ATEX Ex II 2 G+D                                      | T 130 °C | T 195 °C | T 130 °C |

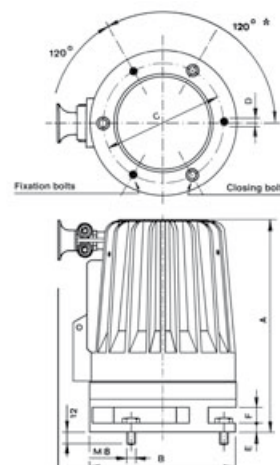
\* The indicated weight refers to the light fitting only .  
The weight of the fixations "Z", "F" and "Sch" is 0.3 kg each.

Tension spring fixation ... Z



|         | A   | B   | C   | D  | E   | F   | G   |
|---------|-----|-----|-----|----|-----|-----|-----|
| R50deH  | 218 | 145 | 95  | 11 | 139 | 115 | 122 |
| R100deH | 232 | 196 | 130 | 14 | 190 | 136 | 133 |

Flange fixation ... F



|         | A   | B   | C*  | D*  | E | F  | G   |
|---------|-----|-----|-----|-----|---|----|-----|
| R50deH  | 232 | 145 | 115 | 8,5 | 9 | 16 | 122 |
| R100deH | 246 | 196 | 165 | 8,5 | 8 | 20 | 133 |

\* Other non standard flanges on request



## Vibration absorbers (silent blocks) ... G

Vibrations from the surrounding plant can have a deleterious effect on the lifetime even of halogen bulbs. Vibration absorbers made from chemically and thermally resistant silicone are offered for use with the tension spring fixation ... Z (Not available for type 100 deH)



## Transport handle ... T1

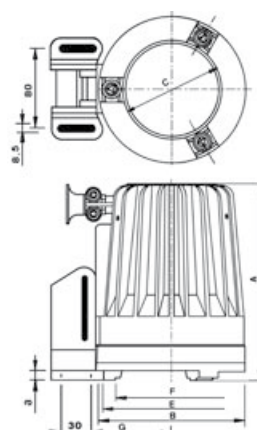
This ergonomic and insulated handle makes transport around the plant easy, and also facilitates the use of the light fitting for inspection inside a vessel on a trailing lead.



## Paint finish ... K

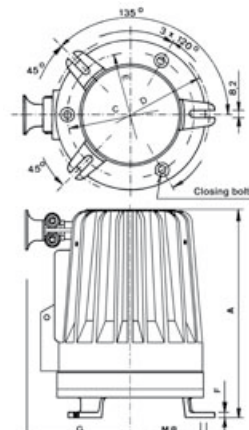
The special two component acrylic paint finish protects against corrosion in excessively aggressive environments, and may satisfy customers special aesthetic requirements. RAL 9001 is standard, other colours on demand.

Tilting hinge fixation ... Sch



|         | A   | B   | C   | D | E   | F   | G   |
|---------|-----|-----|-----|---|-----|-----|-----|
| R50deH  | 218 | 145 | 95  | 3 | 139 | 115 | 75  |
| R100deH | 232 | 196 | 130 | 3 | 190 | 136 | 103 |

Foot ring fixation ... N



|         | A   | B   | C   | D   | E   | F | G   |
|---------|-----|-----|-----|-----|-----|---|-----|
| R50deH  | 241 | 165 | 120 | 155 | 135 | 6 | 122 |
| R100deH | 255 | 250 | 165 | 235 | 180 | 8 | 133 |

Do you wish for more information about our wide range of light fittings for use in hazardous or safe areas, about our range of circular sightglasses to DIN 28120/28121, screwed sightglasses similar to DIN 11851, rectangular or D-ended sightglasses, pipeline flow indicators, sideways or centrally operated wipers, hinged sightglasses, spraying devices or our complete sight and lightglass units VETROLUX®? Are you interested in other types, special versions or different protection degrees? If yes, please contact us – it is our business! You will find the necessary indications about our company on the Internet.

1) All dimensions in mm.

2) Subject to changes without preliminary notice.