

## ASEPTIC PROGRAM



Steril Flanschverbindung STERI-Connect®

### Aseptic flange complete connection STERI-Connect®

#### Dimensions:

DIN 11866-A (DIN 11850)  
DIN 11866-B (EN ISO 1127)  
on request DIN 11866-C (ASME BPE)

#### Marking:

dimension, material, heat number

#### Tolerance:

ISO 2768-1

#### Material:

AISI 316L at medium contact surface  
AISI 304 nut (not at medium contact surface)  
EPDM seal (standard), other materials on demand

#### Certificate (on demand):

EN 10204 3.1  
EN 10204 3.1 AD-W2 (for selected items)

#### Standard surface („MB“):

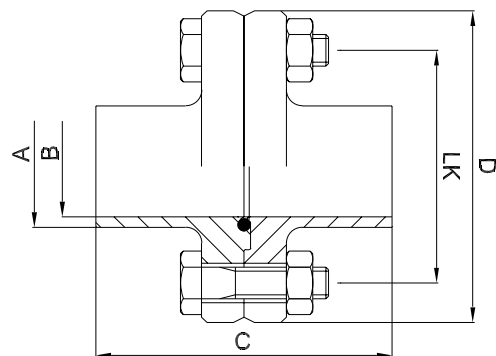
inside:  $Ra \leq 0,8 \mu m$   
outside:  $Ra \leq 1,6 \mu m$

#### Inner surface variants:

electrochemical polished  
 $Ra \leq 0,6 \mu m$  (STERI-line®)  
 $Ra \leq 0,5 \mu m$  (STERI-line®)  
 $Ra \leq 0,4 \mu m$  (HQ-line®)  
 $Ra \leq 0,25 \mu m$  (HQ-line®)

DIN	pipe	A	B	C	D	LK
DN 8	10,0 x 1,0	10,0	8,0	88,0	60,0	40,0
DN 10	12,0 x 1,0	12,0	10,0	88,0	65,0	45,0
DN 10	13,0 x 1,5	13,0	10,0	88,0	65,0	45,0
DN 15	19,0 x 1,5	19,0	16,0	88,0	75,0	55,0
DN 20	23,0 x 1,5	23,0	20,0	92,0	80,0	60,0
DN 25	29,0 x 1,5	29,0	26,0	102,0	85,0	65,0
DN 32	35,0 x 1,5	35,0	32,0	102,0	95,0	75,0
DN 40	41,0 x 1,5	41,0	38,0	102,0	100,0	80,0
DN 50	53,0 x 1,5	53,0	50,0	106,0	110,0	90,0
DN 65	70,0 x 2,0	70,0	66,0	130,0	140,0	115,0
DN 80	85,0 x 2,0	85,0	81,0	130,0	150,0	125,0
DN 100	104,0 x 2,0	104,0	100,0	134,0	170,0	150,0

ISO	pipe	A	B	C	D	LK
DN 8	13,5 x 1,6	13,5	10,3	88,0	60,0	40,0
DN 10	17,2 x 1,6	17,2	14,0	88,0	65,0	45,0
DN 15	21,3 x 1,6	21,3	18,1	88,0	75,0	55,0
DN 20	26,9 x 1,6	26,9	23,7	92,0	80,0	60,0
DN 25	33,7 x 2,0	33,7	29,7	102,0	85,0	65,0
DN 32	42,4 x 2,0	42,4	38,4	102,0	95,0	75,0
DN 40	48,3 x 2,0	48,3	44,3	102,0	100,0	80,0
DN 50	60,3 x 2,0	60,3	56,3	106,0	110,0	90,0
DN 65	76,1 x 2,0	76,1	72,1	130,0	140,0	115,0
DN 80	88,9 x 2,3	88,9	84,3	130,0	150,0	125,0
DN 100	114,3 x 2,3	114,3	109,7	134,0	175,0	150,0

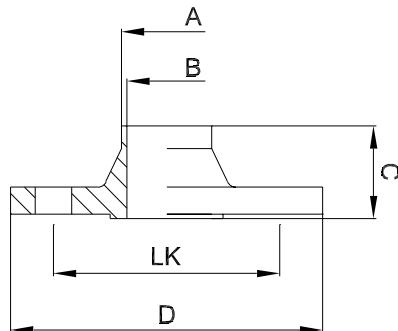


## ASEPTIC PROGRAM

Aseptic flange VS - STERI-Connect®



Steril Flansch - VS



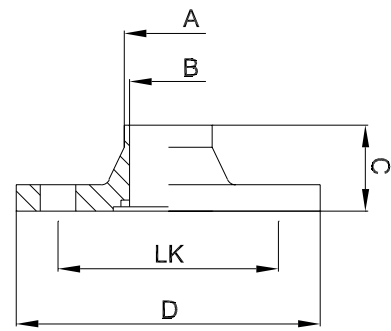
DIN	pipe	A	B	C	D	LK
DN 8	10,0 x 1,0	10,0	8,0	45,0	60,0	40,0
DN 10	12,0 x 1,0	12,0	10,0	45,0	65,0	45,0
DN 10	13,0 x 1,5	13,0	10,0	45,0	65,0	45,0
DN 15	19,0 x 1,5	19,0	16,0	45,0	75,0	55,0
DN 20	23,0 x 1,5	23,0	20,0	47,0	80,0	60,0
DN 25	29,0 x 1,5	29,0	26,0	52,0	85,0	65,0
DN 32	35,0 x 1,5	35,0	32,0	52,0	95,0	75,0
DN 40	41,0 x 1,5	41,0	38,0	52,0	100,0	80,0
DN 50	53,0 x 1,5	53,0	50,0	54,0	110,0	90,0
DN 65	70,0 x 2,0	70,0	66,0	66,0	140,0	115,0
DN 80	85,0 x 2,0	85,0	81,0	66,0	150,0	125,0
DN 100	104,0 x 2,0	104,0	100,0	68,0	175,0	150,0

ISO	pipe	A	B	C	D	LK
DN 8	13,5 x 1,6	13,5	10,3	45,0	60,0	40,0
DN 10	17,2 x 1,6	17,2	14,0	45,0	65,0	45,0
DN 15	21,3 x 1,6	21,3	18,1	45,0	75,0	55,0
DN 20	26,9 x 1,6	26,9	23,7	47,0	80,0	60,0
DN 25	33,7 x 2,0	33,7	29,7	52,0	85,0	65,0
DN 32	42,4 x 2,0	42,4	38,4	52,0	95,0	75,0
DN 40	48,3 x 2,0	48,3	44,3	52,0	100,0	80,0
DN 50	60,3 x 2,0	60,3	56,3	54,0	110,0	90,0
DN 65	76,1 x 2,0	76,1	72,1	66,0	140,0	115,0
DN 80	88,9 x 2,3	88,9	84,3	66,0	150,0	125,0
DN 100	114,3 x 2,3	114,3	109,7	68,0	175,0	150,0

Aseptic flange RS - STERI-Connect®



Steril Flansch - RS

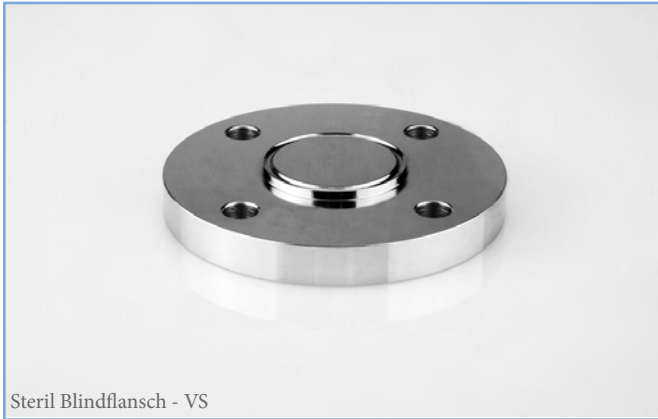


DIN	pipe	A	B	C	D	LK
DN 8	10,0 x 1,0	10,0	8,0	45,0	60,0	40,0
DN 10	12,0 x 1,0	12,0	10,0	45,0	65,0	45,0
DN 10	13,0 x 1,5	13,0	10,0	45,0	65,0	45,0
DN 15	19,0 x 1,5	19,0	16,0	45,0	75,0	55,0
DN 20	23,0 x 1,5	23,0	20,0	47,0	80,0	60,0
DN 25	29,0 x 1,5	29,0	26,0	52,0	85,0	65,0
DN 32	35,0 x 1,5	35,0	32,0	52,0	95,0	75,0
DN 40	41,0 x 1,5	41,0	38,0	52,0	100,0	80,0
DN 50	53,0 x 1,5	53,0	50,0	54,0	110,0	90,0
DN 65	70,0 x 2,0	70,0	66,0	66,0	140,0	115,0
DN 80	85,0 x 2,0	85,0	81,0	66,0	150,0	125,0
DN 100	104,0 x 2,0	104,0	100,0	68,0	175,0	150,0

ISO	pipe	A	B	C	D	LK
DN 8	13,5 x 1,6	13,5	10,3	45,0	60,0	40,0
DN 10	17,2 x 1,6	17,2	14,0	45,0	65,0	45,0
DN 15	21,3 x 1,6	21,3	18,1	45,0	75,0	55,0
DN 20	26,9 x 1,6	26,9	23,7	47,0	80,0	60,0
DN 25	33,7 x 2,0	33,7	29,7	52,0	85,0	65,0
DN 32	42,4 x 2,0	42,4	38,4	52,0	95,0	75,0
DN 40	48,3 x 2,0	48,3	44,3	52,0	100,0	80,0
DN 50	60,3 x 2,0	60,3	56,3	54,0	110,0	90,0
DN 65	76,1 x 2,0	76,1	72,1	66,0	140,0	115,0
DN 80	88,9 x 2,3	88,9	84,3	66,0	150,0	125,0
DN 100	114,3 x 2,3	114,3	109,7	68,0	175,0	150,0

## ASEPTIC PROGRAM

Aseptic blind flange VS - STERI-Connect®

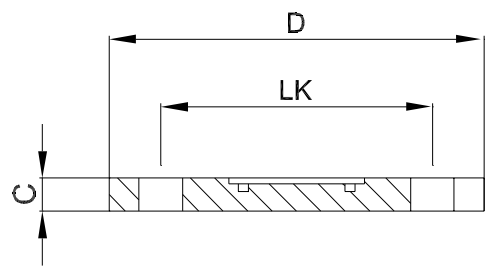
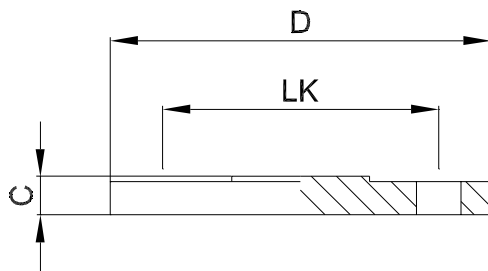


Steril Blindflansch - VS

Aseptic blind flange RS - STERI-Connect®



Steril Blindflansch - RS



DIN	pipe	C	D	LK
DN 8	10,0 x 1,0	10,0	60,0	40,0
DN 10	12,0 x 1,0	10,0	65,0	45,0
DN 10	13,0 x 1,5	10,0	65,0	45,0
DN 15	19,0 x 1,5	10,0	75,0	55,0
DN 20	23,0 x 1,5	12,0	80,0	60,0
DN 25	29,0 x 1,5	12,0	85,0	65,0
DN 32	35,0 x 1,5	12,0	95,0	75,0
DN 40	41,0 x 1,5	12,0	100,0	80,0
DN 50	53,0 x 1,5	14,0	110,0	90,0
DN 65	70,0 x 2,0	16,0	140,0	115,0
DN 80	85,0 x 2,0	16,0	150,0	125,0
DN 100	104,0 x 2,0	18,0	175,0	150,0

DIN	pipe	C	D	LK
DN 8	10,0 x 1,0	10,0	60,0	40,0
DN 10	12,0 x 1,0	10,0	65,0	45,0
DN 10	13,0 x 1,5	10,0	65,0	45,0
DN 15	19,0 x 1,5	10,0	75,0	55,0
DN 20	23,0 x 1,5	12,0	80,0	60,0
DN 25	29,0 x 1,5	12,0	85,0	65,0
DN 32	35,0 x 1,5	12,0	95,0	75,0
DN 40	41,0 x 1,5	12,0	100,0	80,0
DN 50	53,0 x 1,5	14,0	110,0	90,0
DN 65	70,0 x 2,0	16,0	140,0	115,0
DN 80	85,0 x 2,0	16,0	150,0	125,0
DN 100	104,0 x 2,0	18,0	175,0	150,0

ISO	pipe	C	D	LK
DN 8	13,5 x 1,6	10,0	60,0	40,0
DN 10	17,2 x 1,6	10,0	65,0	45,0
DN 15	21,3 x 1,6	10,0	75,0	55,0
DN 20	26,9 x 1,6	12,0	80,0	60,0
DN 25	33,7 x 2,0	12,0	85,0	65,0
DN 32	42,4 x 2,0	12,0	95,0	75,0
DN 40	48,3 x 2,0	12,0	100,0	80,0
DN 50	60,3 x 2,0	14,0	110,0	90,0
DN 65	76,1 x 2,0	16,0	140,0	115,0
DN 80	88,9 x 2,3	16,0	150,0	125,0
DN 100	114,3 x 2,3	18,0	175,0	150,0

ISO	pipe	C	D	LK
DN 8	13,5 x 1,6	10,0	60,0	40,0
DN 10	17,2 x 1,6	10,0	65,0	45,0
DN 15	21,3 x 1,6	10,0	75,0	55,0
DN 20	26,9 x 1,6	12,0	80,0	60,0
DN 25	33,7 x 2,0	12,0	85,0	65,0
DN 32	42,4 x 2,0	12,0	95,0	75,0
DN 40	48,3 x 2,0	12,0	100,0	80,0
DN 50	60,3 x 2,0	14,0	110,0	90,0
DN 65	76,1 x 2,0	16,0	140,0	115,0
DN 80	88,9 x 2,3	16,0	150,0	125,0
DN 100	114,3 x 2,3	18,0	175,0	150,0

## ASEPTIC PROGRAM

Seal ring STERI-Connect®



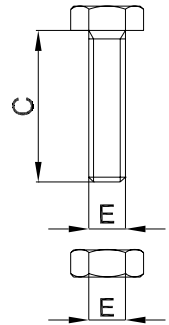
Steril Dichtring STERI-Connect®

Screw set for FLANGE CONNECTION STERI-Connect®



Sechskantschraubensatz für STERI-Connect®

Hexagonal screw: EN ISO 4017  
 Hexagonal nut: EN ISO 4032  
 Material: A2-70 (on request A4-80)



DIN	pipe	dimens.		
DN 6	8,0 x 1,0	6 x 2,0		
DN 8	10,0 x 1,0	8 x 2,0		
DN 10	12,0 x 1,0	11 x 2,5		
DN 10	13,0 x 1,5	11 x 2,5		
DN 15	19,0 x 1,5	17 x 2,5		
DN 20	23,0 x 1,5	21 x 2,5		
DN 25	29,0 x 1,5	27 x 3,0		
DN 32	35,0 x 1,5	33 x 3,0		
DN 40	41,0 x 1,5	39 x 3,0		
DN 50	53,0 x 1,5	51 x 3,0		
DN 65	70,0 x 2,0	67 x 3,0		
DN 80	85,0 x 2,0	82 x 3,0		
DN 100	104,0 x 2,0	100 x 3,0		

DIN	ISO	C	E	Q'ty
DN 8 - 40	DN 8 - 40	30	M8	4
DN 50	DN 50	35	M8	4
DN 65-80	DN 65-80	40	M10	4
DN 100	DN 100	45	M10	4

ISO	pipe	dimens.		
DN 8	13,5 x 1,6	11 x 2,0		
DN 10	17,2 x 1,6	15 x 2,5		
DN 15	21,3 x 1,6	19 x 2,5		
DN 20	26,9 x 1,6	24 x 2,5		
DN 25	33,7 x 2,0	30 x 3,0		
DN 32	42,4 x 2,0	39 x 3,0		
DN 40	48,3 x 2,0	45 x 3,0		
DN 50	60,3 x 2,0	57 x 3,0		
DN 65	76,1 x 2,0	72,5 x 3,0		
DN 80	88,9 x 2,3	85 x 3,0		
DN 100	114,3 x 2,3	109,5 x 3,0		